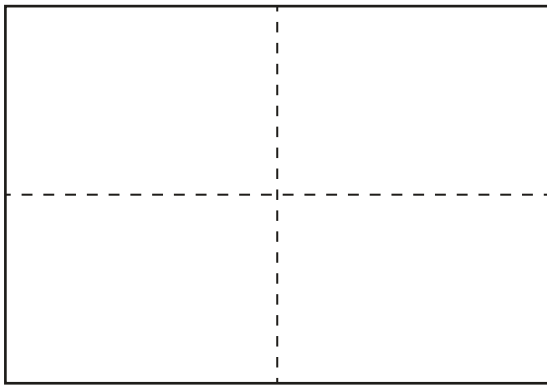
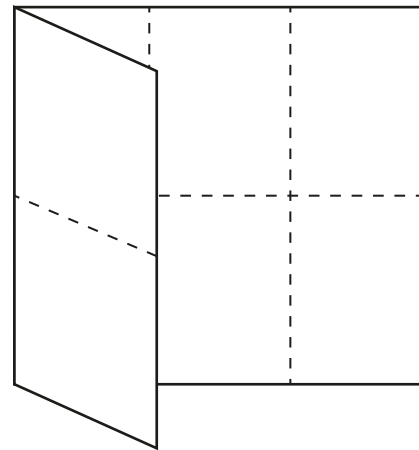


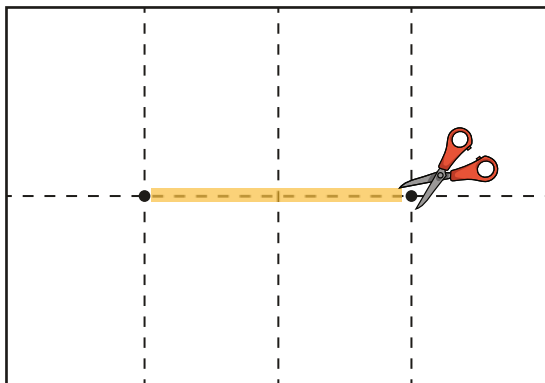
My Middlesbrough Glossary - How to fold your booklet



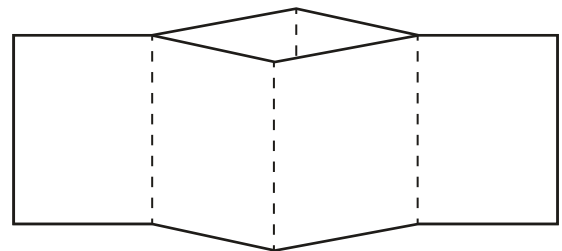
Fold your sheet in half both ways. There are lines on the booklet to help guide you.



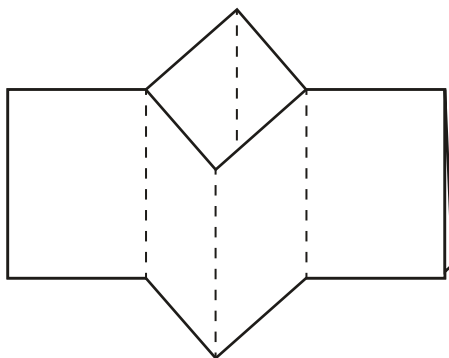
Lay your paper flat again and fold both of the short edges into the centre.



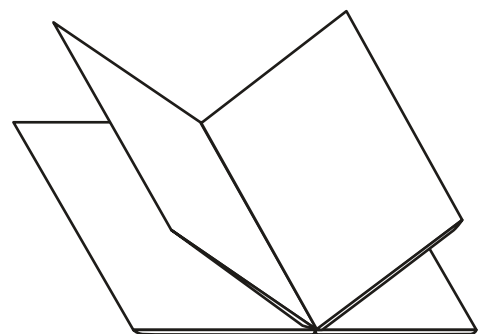
Using scissors, carefully cut along the centre fold.



Fold the paper in half long ways, then pull the cut open.

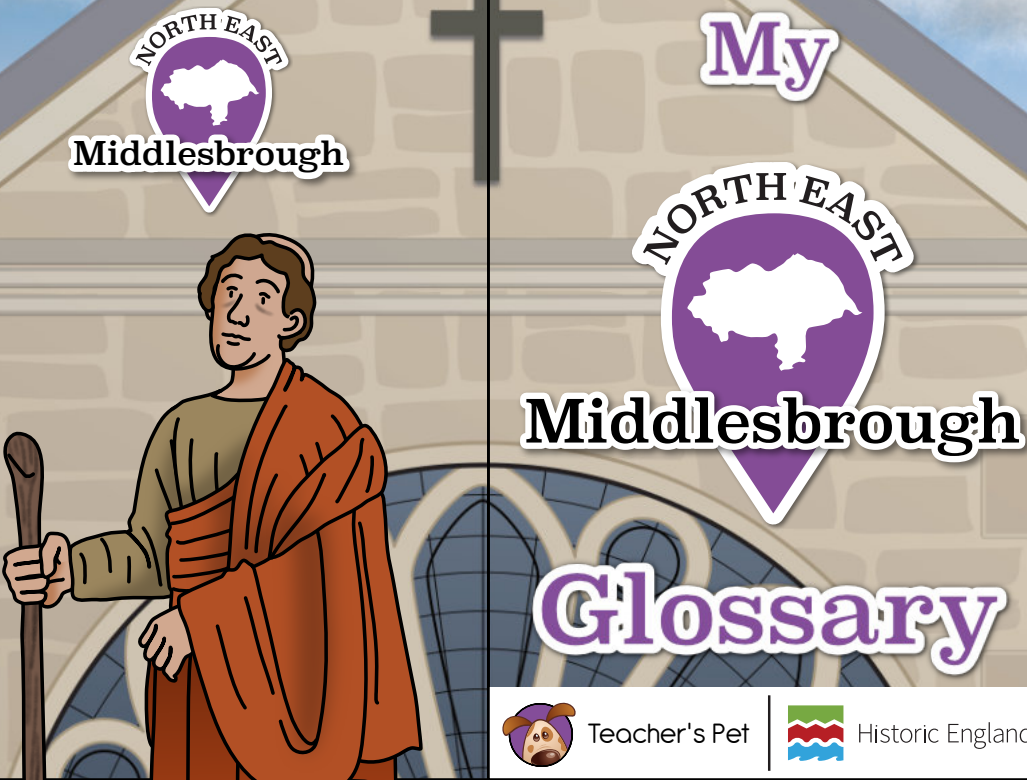


Push the sides together, closing the gap you have cut.



Fold the pages round so the cover is at the front. If you want your book to be extra strong, glue the insides of the pages so it holds its shape.





Teacher's Pet



Historic England

Arthur Dorman

One of the founders of Dorman Long which played an important role in the development of the steel and iron industry in Middlesbrough.

blast furnace

A large oven that is used to melt iron ore to make iron that can be processed into steel.

Bolckow Vaughan & Co.

Arguably the most important company in the steel and iron industry in Middlesbrough.

Cleveland Hills

A range of hills located to the south of Middlesbrough.

Cleveland Ironstone

A type of rock, found in the Cleveland Hills, that was a valuable source of iron ore.

Commercial Street

The site of the second railway station in Middlesbrough.

Eston Hills

A range of hills where John Vaughan discovered a valuable seam of Cleveland ironstone.

Henry Bolckow

A German-born British industrialist who was one of the founders of Bolckow Vaughan & Co. Ltd. He was also the first Mayor of Middlesbrough.

Ironopolis

A historical nickname for Middlesbrough that highlights its importance at the centre of the iron and steel industry.

John Vaughan

A British industrialist who was one of the founders of Bolckow Vaughan & Co. Ltd. He was also the person who found a high-value seam of ironstone at Eston Hills.

Joseph Pease

A businessman who bought land and developed a port at Middlesbrough.

Middlesbrough Station

The train station that was built as the population of Middlesbrough rapidly grew.

Port Darlington

The original port that was built at Middlesbrough.

priory

A religious house or monastery led by a prior or prioress.

River Tees

A river that flows through Middlesbrough and into the North Sea.

Stockton

A town located near Middlesbrough which was the largest town in the area until Middlesbrough's rapid growth.

Stockton and Darlington Railway

The world's first public railway.

Tees Transporter Bridge

An iconic bridge that spans the River Tees in Middlesbrough. It has a suspended gondola that transports vehicles and pedestrians across the river.

William Peachey

The architect who designed Middlesbrough Station.

Local History

Historic England and Teacher's Pet have come together to bring you a collection of free resources that you can use in your local history teaching.



Historic England



Teacher's Pet

Who are Teacher's Pet?

Teacher's Pet have been providing downloadable and playable educational content to early years and primary school teachers for over 14 years. We cover all areas of the curriculum and use a team of in-house teachers and designers to create engaging and memorable concepts, that the children will love.

Why local history?

At [Teacher's Pet](https://www.tpet.co.uk) we want to empower primary school teachers by giving them the tools they need to deliver inspiring and thoughtful lessons about the local area and its history. We believe local history teaching has such an important part to play in a child's wellbeing – helping to give children a sense of pride in where they live.

Our Local History project is designed to provide teachers across the UK with everything they need to successfully carry out a full scheme of teaching about their local area, through key enquiry questions and source led activities.

Working with [Historic England](https://www.historicengland.org.uk) gives us access to archived maps and photos for resources and information from knowledgeable local historians, as well helping us to provide the content to you free of charge.

For more information about our Local History project or to find out more about Teacher's Pet Classroom Resources, please visit our website.