



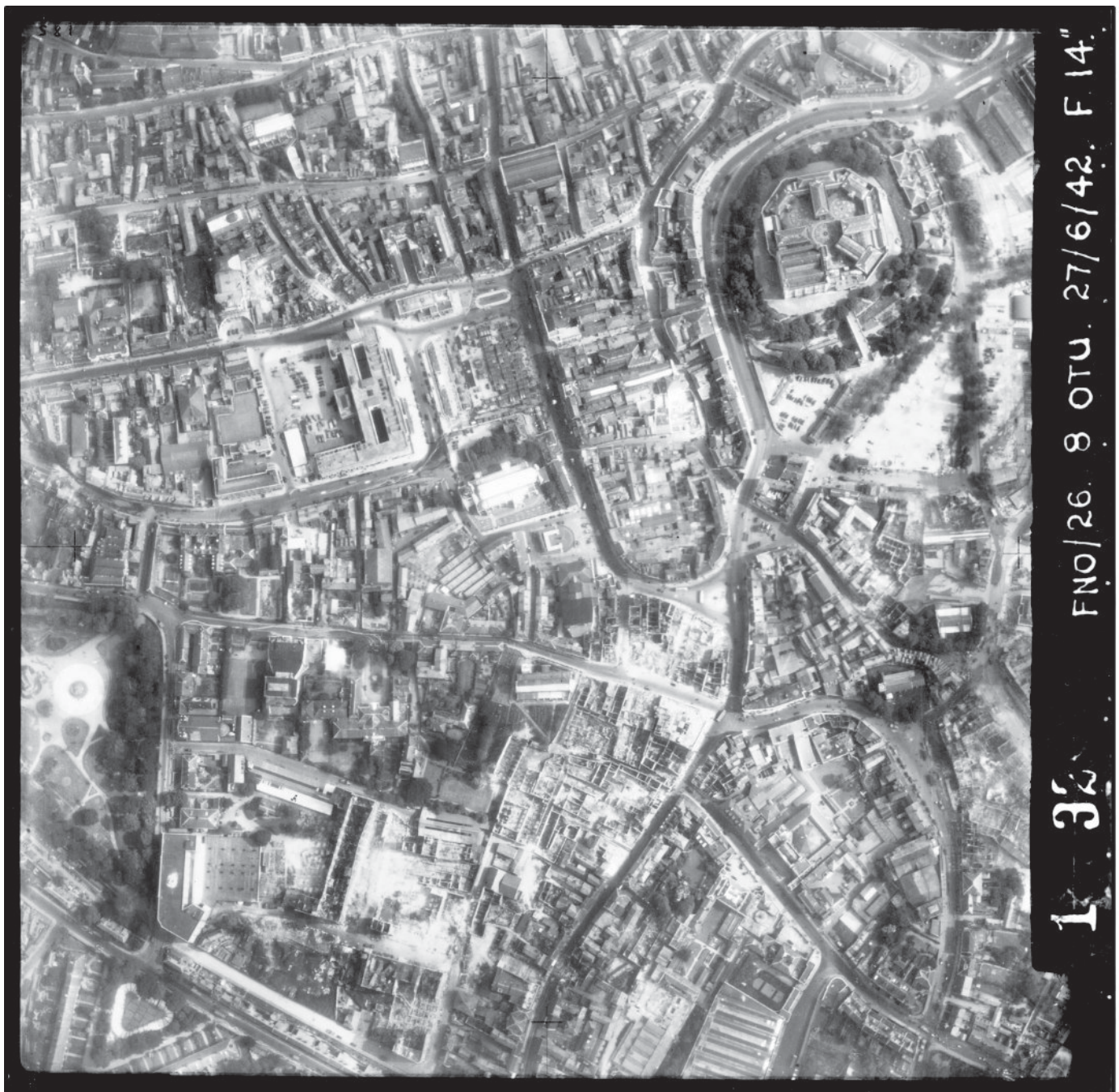
What happened in Norwich during the World Wars?

Norwich - Bomb Damage

Look at this aerial photo of Norwich taken on the 27th of June 1942.

It shows the damage caused by German bombers, as part of the Baedeker Blitz campaign, from April to June of 1942.

Use a coloured pencil or highlighter to shade in any areas that you think may have been hit by a German bomb (look for buildings without roofs and spaces with missing buildings).



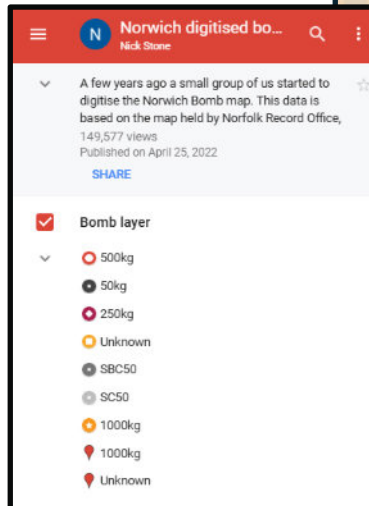


What happened in Norwich during the World Wars?

Norwich - Bomb Damage

This digital map shows where all the World War 2 bombs fell in Norwich (you can view it online [here](https://tpet.me/norwich-ww2-map)) or visit <https://tpet.me/norwich-ww2-map>.

The square shows the area covered by the aerial photograph.



- Can you match any of the bombs to the damage on the aerial photograph? Use a symbol to represent the bombs and add it to the photo in the places that bombs caused damage.
- Use a modern map to work out where the bombs landed. Can you list any buildings or shops that stand today on the sites of World War 2 bombs?

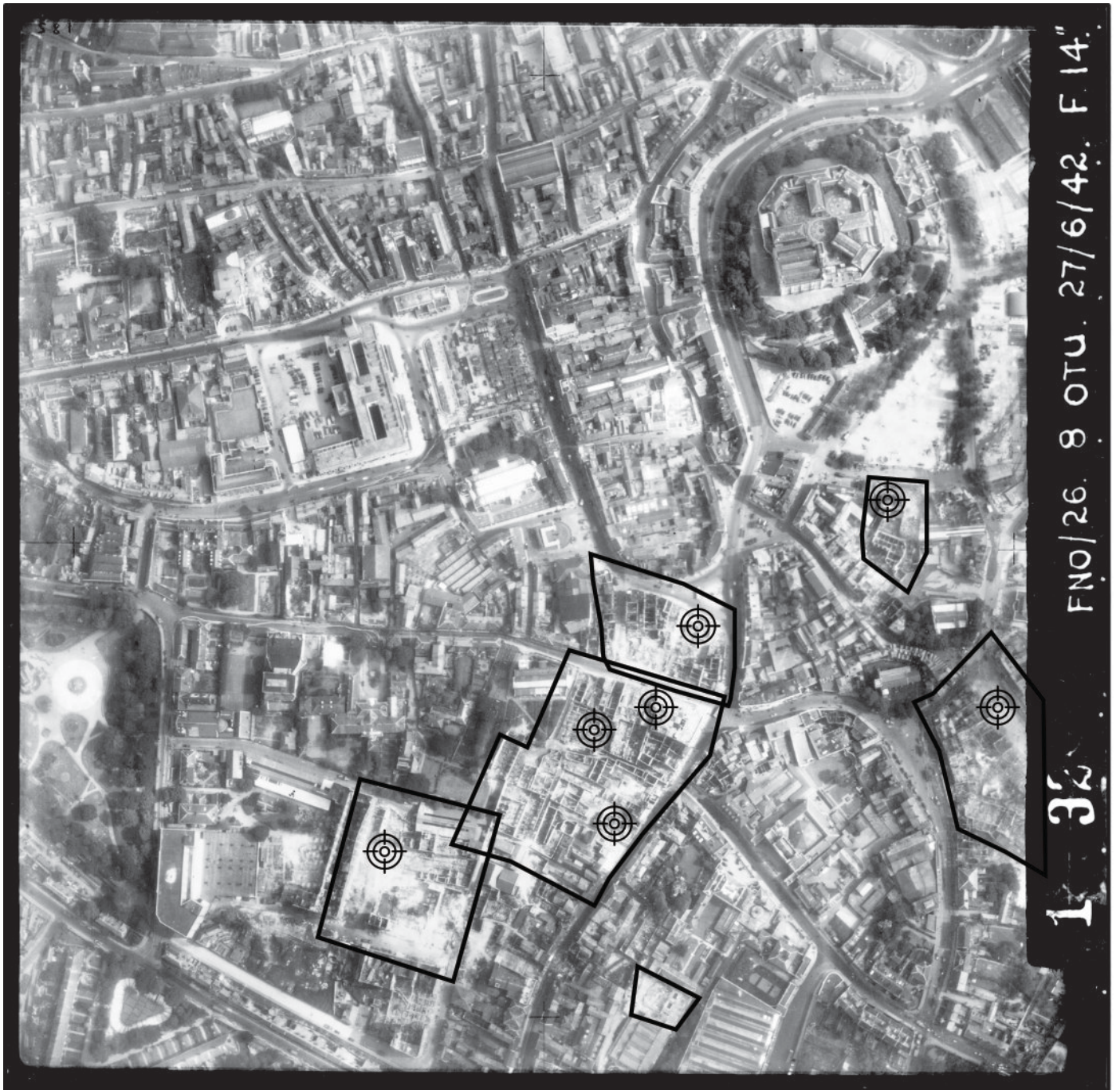




What happened in Norwich during the World Wars?

Norwich - Bomb Damage - Answers

Compare this bomb damage to what you marked on your aerial photograph. How did you get on?



© Historic England Archive (RAF photography) Ref: FNO_26_1p_1032 - 27th June 1942. Supplied by Historic England Archive - archive@historicengland.org.uk - 01793 414000



Teacher's Pet



Historic
England





What happened in Norwich during the World Wars?

Norwich - Bomb Damage

Look at this aerial photo of Norwich taken on the 27th of June 1942.

It shows the damage caused by German bombers, as part of the Baedeker Blitz campaign, from April to June of 1942.

Use a coloured pencil or highlighter to shade in any areas that you think may have been hit by a German bomb (look for buildings without roofs and spaces with missing buildings).



1 32 FNO/26 8 OTU 27/6/42 F 14"

© Historic England Archive (RAF photography) Ref: raf_fno_26_fp_1032 - 27th June 1942. Supplied by Historic England Archive - archive@HistoricEngland.org.uk - 01793 414600



Teacher's Pet



Historic
England



Norwich

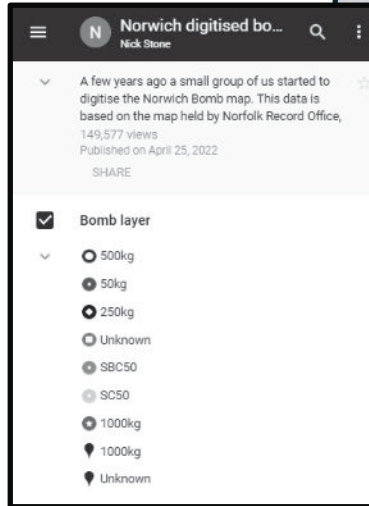


What happened in Norwich during the World Wars?

Norwich - Bomb Damage

This digital map shows where all the World War 2 bombs fell in Norwich (you can view it online [here](https://tpet.me/norwich-ww2-map)) or visit <https://tpet.me/norwich-ww2-map>.

The square shows the area covered by the aerial photograph.



- Can you match any of the bombs to the damage on the aerial photograph? Use a symbol to represent the bombs and add it to the photo in the places that bombs caused damage.
- Use a modern map to work out where the bombs landed. Can you list any buildings or shops that stand today on the sites of World War 2 bombs?

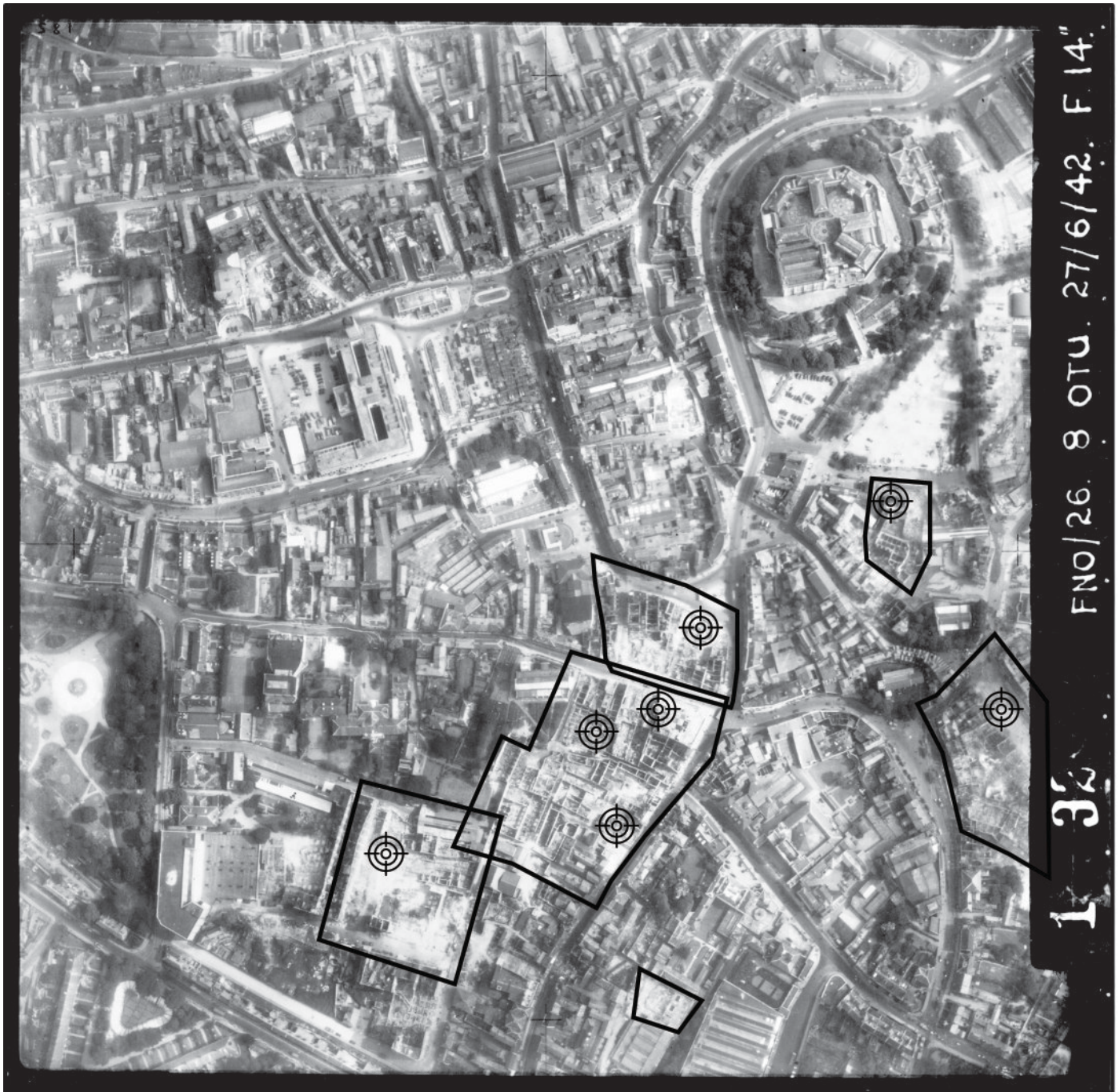




What happened in Norwich during the World Wars?

Norwich - Bomb Damage - Answers

Compare this bomb damage to what you marked on your aerial photograph. How did you get on?



© Historic England Archive (RAF photography) Ref:RAF_FNO_26.fp_1032 - 27th June 1942. Supplied by Historic England Archive - archive@historicengland.org.uk - 01793 414000



Teacher's Pet



Historic
England



Norwich

Local History

Historic England and Teacher's Pet have come together to bring you a collection of free resources that you can use in your local history teaching.



**Historic
England**



Teacher's Pet

Who are Teacher's Pet?

Teacher's Pet have been providing downloadable and playable educational content to early years and primary school teachers for over 14 years. We cover all areas of the curriculum and use a team of in-house teachers and designers to create engaging and memorable concepts, that the children will love.

Why local history?

At [Teacher's Pet](https://www.tpet.co.uk) we want to empower primary school teachers by giving them the tools they need to deliver inspiring and thoughtful lessons about the local area and its history. We believe local history teaching has such an important part to play in a child's wellbeing – helping to give children a sense of pride in where they live.

Our Local History project is designed to provide teachers across the UK with everything they need to successfully carry out a full scheme of teaching about their local area, through key enquiry questions and source led activities.

Working with [Historic England](https://www.historicengland.org.uk) gives us access to archived maps and photos for resources and information from knowledgeable local historians, as well helping us to provide the content to you free of charge.

For more information about our Local History project or to find out more about Teacher's Pet Classroom Resources, please visit our website.