



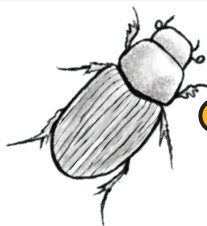
Who were the first people to live in the area?



Southampton

Below are several examples of excavated evidence found in and around Testwood Lakes. Draw a line to match each of the objects with the definitions of what they tell you about Bronze Age life.

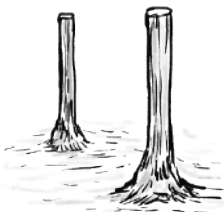
A type of dung beetle that needed cow or sheep pats to live on.



Part of a c.3,500-year-old sea-going wooden boat.



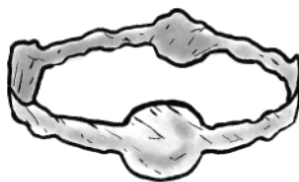
The upright wooden bridge posts were 1.5 meters apart.



Blade of a short sword (rapier) made from bronze.



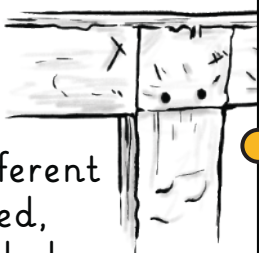
A bracelet made from copper.



Remains of 3 separate bridges.



Well preserved tool-marks left on some timbers and range of different wooden joints used, such as mortice-holes.



This suggests people had tools and weapons made from metal (bronze).

This suggests the bridge was wide enough for two people to easily pass or walk side-by-side.

This suggests that people were skilled carpenters who made and used a range of tools to create complex wooden objects.

This suggests people were farming animals such as cows and sheep.

This suggests that people were using the whole landscape and adapting it to suit their needs.

This suggests people travelled by boat, not just on local rivers but out to sea. They may have travelled along the coast and/or gone further out across the sea to Europe.

This suggests people wore jewellery made from precious metals (copper).



Teacher's Pet



Historic England



What do the discoveries tell you about daily life? How does the evidence support your theory?

Daily Life

[illegible]

Evidence

[illegible]



Who were the first people to live in the area?

The wood used was local, mainly oak, with some alder, ash, hazel and willow.



This area is in the floodplain of the River Blackwater and was once threaded with streams that have since changed course.

The timbers survived thousands of years because the high water table kept them damp.



Radiocarbon Dating Tests suggest the bridges at Testwood Lakes date to 1,500 BC. This is the oldest bridge found in this country so far.

The bridge would have stood for about 100 years.



The Middle Bronze Age, c. 1,600 BC - 1,000 BC was a time when people lived by growing crops such as wheat and by keeping domestic animals.

Trade with the continent was increasing.



Bronze age people sometimes deliberately placed metal objects into water as part of special (ritual) ceremonies.

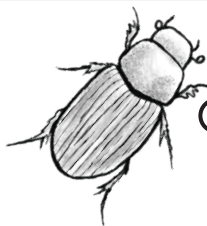


Who were the first people to live in the area?



Below are several examples of excavated evidence found in and around Testwood Lakes. Draw a line to match each of the objects with the definitions of what they tell you about Bronze Age life.

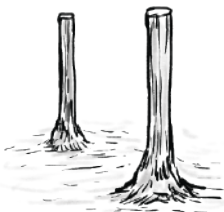
A type of dung beetle that needed cow or sheep pats to live on.



Part of a c.3,500-year-old sea-going wooden boat.



The upright wooden bridge posts were 1.5 meters apart.



Blade of a short sword (rapier) made from bronze.



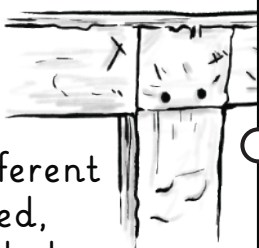
A bracelet made from copper.



Remains of 3 separate bridges.



Well preserved tool-marks left on some timbers and range of different wooden joints used, such as mortice-holes.



This suggests people had tools and weapons made from metal (bronze).

This suggests the bridge was wide enough for two people to easily pass or walk side-by-side.

This suggests that people were skilled carpenters who made and used a range of tools to create complex wooden objects.

This suggests people were farming animals such as cows and sheep.

This suggests that people were using the whole landscape and adapting it to suit their needs.

This suggests people travelled by boat, not just on local rivers but out to sea. They may have travelled along the coast and/or gone further out across the sea to Europe.

This suggests people wore jewellery made from precious metals (copper).





Who were the first people to live in the area?

What do the discoveries tell you about daily life? How does the evidence support your theory?

Daily Life

[illegible]

Evidence

[illegible]

Historic England



Who were the first people to live in the area?



Teacher's Pet



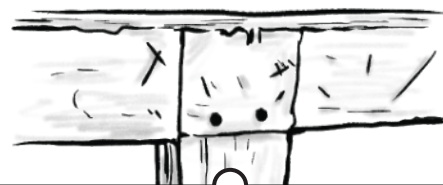
Historic England

The wood used was local, mainly oak, with some alder, ash, hazel and willow.



This area is in the floodplain of the River Blackwater and was once threaded with streams that have since changed course.

The timbers survived thousands of years because the high water table kept them damp.



Radiocarbon Dating Tests suggest the bridges at Testwood Lakes date to 1,500 BC. This is the oldest bridge found in this country so far.

The bridge would have stood for about 100 years.



The Middle Bronze Age, c. 1,600 BC - 1,000 BC was a time when people lived by growing crops such as wheat and by keeping domestic animals.

Trade with the continent was increasing.



Bronze age people sometimes deliberately placed metal objects into water as part of special (ritual) ceremonies.



Southampton

Local History

Historic England and Teacher's Pet have come together to bring you a collection of free resources that you can use in your local history teaching.



**Historic
England**



Teacher's Pet

Who are Teacher's Pet?

Teacher's Pet have been providing downloadable and playable educational content to early years and primary school teachers for over 14 years. We cover all areas of the curriculum and use a team of in-house teachers and designers to create engaging and memorable concepts, that the children will love.

Why local history?

At [Teacher's Pet](https://www.tpet.co.uk) we want to empower primary school teachers by giving them the tools they need to deliver inspiring and thoughtful lessons about the local area and its history. We believe local history teaching has such an important part to play in a child's wellbeing – helping to give children a sense of pride in where they live.

Our Local History project is designed to provide teachers across the UK with everything they need to successfully carry out a full scheme of teaching about their local area, through key enquiry questions and source led activities.

Working with [Historic England](https://www.historicengland.org.uk) gives us access to archived maps and photos for resources and information from knowledgeable local historians, as well helping us to provide the content to you free of charge.

For more information about our Local History project or to find out more about Teacher's Pet Classroom Resources, please visit our website.