



Why did Southampton become known as 'the Gateway to the Empire'?

Gateway to the Empire

There are lots of reasons why Southampton became known as the "Gateway to the Empire."

To help us explain why, we need to break it down into the key factors:

War

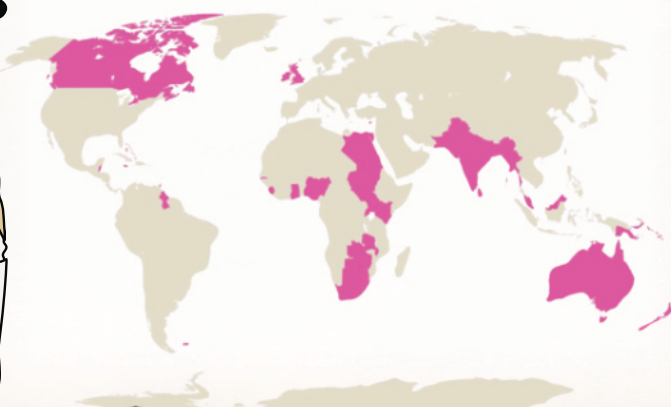
Trade

People

Read the statements below and decide which factors they are examples of.



This map shows all the parts of the world that were at one time or another part of the British Empire.



W	T	P	It was a significant departure point for English armies, such as Henry V's departure for France in 1415 and troops heading to the Crimea.
W	T	P	Southampton's location on the Solent, with its deep harbour and strong tidal flow, made it an ideal natural port for large ships to access and depart from England.
W	T	P	During the Napoleonic Wars, it became a major centre for military operations, reinforcing its connection to the growing empire.
W	T	P	In the steam age, the port's facilities, including the railway connection and the opening of the first docks in 1836, propelled it to become Britain's premier passenger port by 1907.
W	T	P	Continuous development as a major port from the medieval period.
W	T	P	From the medieval period, the port facilitated trade with the continent.
W	T	P	Its role as a departure point for civilian travel also grew, with famous ships like the RMS Queen Elizabeth 2 and SS Canberra serving the empire and other international routes.
W	T	P	Both World Wars saw large numbers of British Expeditionary Forces and troops for Operation Overlord depart from Southampton's docks.

Which factor was most important in Southampton becoming a gateway to the empire?





Why did Southampton become known as 'the Gateway to the Empire'?

Gateway to the Empire

There are lots of reasons why Southampton became known as the "Gateway to the Empire."

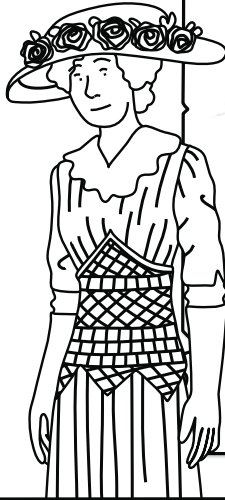
To help us explain why, we need to break it down into the key factors:

War

Trade

People

Read the statements below and decide which factors they are examples of.



This map shows all the parts of the world that were at one time or another part of the British Empire.



W	T	P	It was a significant departure point for English armies, such as Henry V's departure for France in 1415 and troops heading to the Crimea.
W	T	P	Southampton's location on the Solent, with its deep harbour and strong tidal flow, made it an ideal natural port for large ships to access and depart from England.
W	T	P	During the Napoleonic Wars, it became a major centre for military operations, reinforcing its connection to the growing empire.
W	T	P	In the steam age, the port's facilities, including the railway connection and the opening of the first docks in 1836, propelled it to become Britain's premier passenger port by 1907.
W	T	P	Continuous development as a major port from the medieval period.
W	T	P	From the medieval period, the port facilitated trade with the continent.
W	T	P	Its role as a departure point for civilian travel also grew, with famous ships like the RMS Queen Elizabeth 2 and SS Canberra serving the empire and other international routes.
W	T	P	Both World Wars saw large numbers of British Expeditionary Forces and troops for Operation Overlord depart from Southampton's docks.

Which factor was most important in Southampton becoming a gateway to the empire?



Teacher's Pet



Historic
England



Southampton

Local History

Historic England and Teacher's Pet have come together to bring you a collection of free resources that you can use in your local history teaching.



**Historic
England**



Teacher's Pet

Who are Teacher's Pet?

Teacher's Pet have been providing downloadable and playable educational content to early years and primary school teachers for over 14 years. We cover all areas of the curriculum and use a team of in-house teachers and designers to create engaging and memorable concepts, that the children will love.

Why local history?

At [Teacher's Pet](https://www.tpet.co.uk) we want to empower primary school teachers by giving them the tools they need to deliver inspiring and thoughtful lessons about the local area and its history. We believe local history teaching has such an important part to play in a child's wellbeing – helping to give children a sense of pride in where they live.

Our Local History project is designed to provide teachers across the UK with everything they need to successfully carry out a full scheme of teaching about their local area, through key enquiry questions and source led activities.

Working with [Historic England](https://www.historicengland.org.uk) gives us access to archived maps and photos for resources and information from knowledgeable local historians, as well helping us to provide the content to you free of charge.

For more information about our Local History project or to find out more about Teacher's Pet Classroom Resources, please visit our website.