



Which invaders shaped the development of Southampton the most?



What can coins tell us about Southampton's early history?



A hoard of Roman coins was excavated in Millbrook in 2008. Over 4,000 late 3rd century Roman coins were found during building work.

The discovery of over 200 coins from the early Anglo Saxon era suggests that Southampton may even have had its own Royal Mint.

Anglo-Saxon, Sceattas. Circa 720-745. Hamwic (Southampton) mint.



Roman Coin 286-293 AD of a Romano-British leader called Carausius, who tried to take over part of the empire.



Wessex, Alfred the Great (871-899) penny.

William I AR Penny, 1066-1068. Canterbury mint.





Which invaders shaped the development of Southampton the most?



Teacher's Pet



Historic England



Southampton



Which invaders shaped the development of Southampton the most?





Which invaders shaped the development of Southampton the most?

Coins are only made of precious metals.

Only a powerful person could issue coins.

Inscriptions on coins are in Latin - the language of the Roman Empire.

The Millbrook Hoard of 4000 Roman coins dates to a rebel Romano British leader called Carausius who tried to set up his own empire.

The metalworkers who made them were highly skilled.

Facts about coins from Southampton pre 1100

They feature names of important people who had control of the area or country at the time they were issued.

Many coins have religious symbols on them or images of Gods. Pax was the Roman goddess of peace.

The Anglo-Saxon kings set up a mint in Hamwic in the 8th century, before Alfred the Great made Winchester his capital.

Coins often featured both real and mythical creatures.



Which invaders shaped the development of Southampton the most?

What can coins tell us about Southampton's early history?

In what way are the coins similar?	In what way are the coins different?

What are the similarities and differences between the pre 1100 coins and Modern coins?

	Similarities	Differences
		





Which invaders shaped the development of Southampton the most?

What can coins tell us about Southampton's early history?

Why are coins important historical evidence?

Leaders

Religion

Skill and
artistry

Language

Links with
other places

Importance of
Southampton





Which invaders shaped the development of Southampton the most?



What can coins tell us about Southampton's early history?



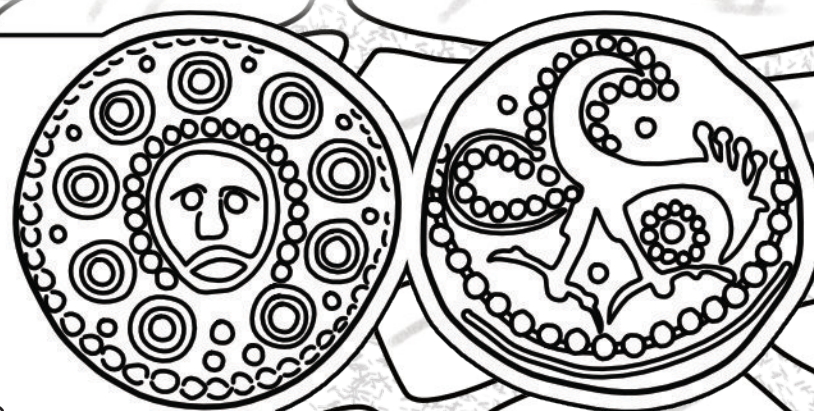
A hoard of Roman coins was excavated in Millbrook in 2008. Over 4,000 late 3rd century Roman coins were found during building work.



Roman Coin 286-293 AD of a Romano-British leader called Carausius, who tried to take over part of the empire.

The discovery of over 200 coins from the early Anglo Saxon era suggests that Southampton may even have had its own Royal Mint.

Anglo-Saxon, Sceattas. Circa 720-745. Hamwic (Southampton) mint.



Wessex, Alfred the Great (871-899) penny.

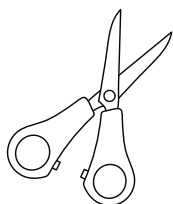
William I AR Penny, 1066-1068. Canterbury mint.



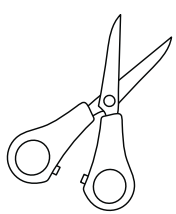
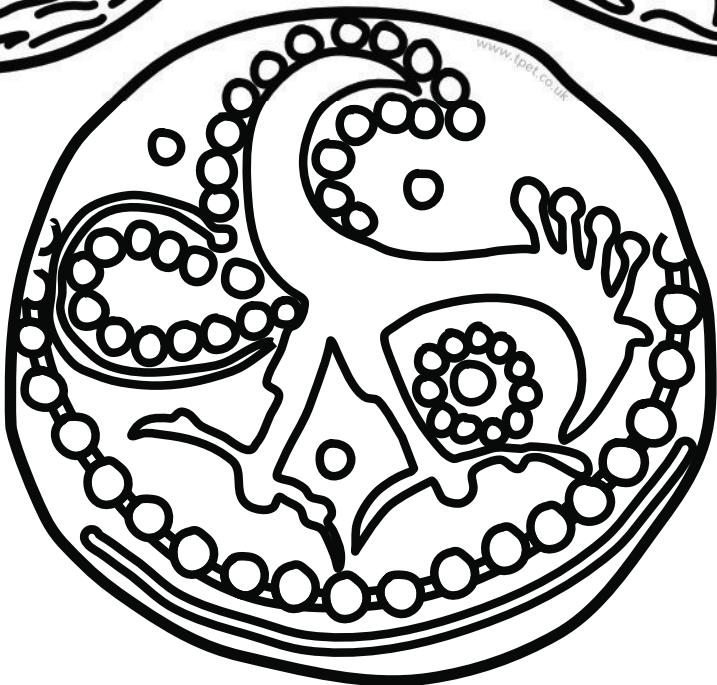
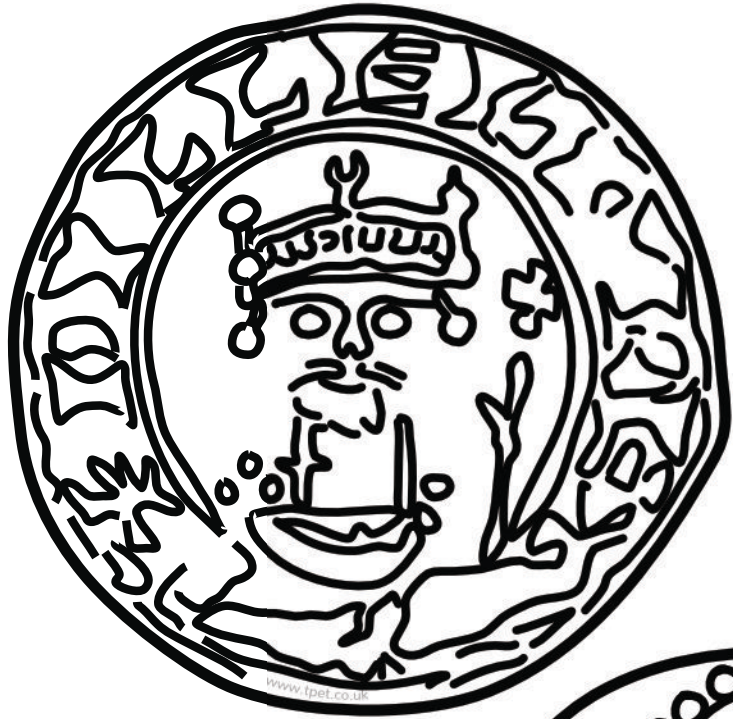
Teacher's Pet



Historic England



? Which invaders shaped the development of Southampton the most?





Which invaders shaped the development of Southampton the most?

Coins are only made of precious metals.

Only a powerful person could issue coins.

Inscriptions on coins are in Latin - the language of the Roman Empire.

The Millbrook Hoard of 4000 Roman coins dates to a rebel Romano British leader called Carausius who tried to set up his own empire.

The metalworkers who made them were highly skilled.

Facts about coins from Southampton pre 1100

They feature names of important people who had control of the area or country at the time they were issued.

Many coins have religious symbols on them or images of Gods. Pax was the Roman goddess of peace.

The Anglo-Saxon kings set up a mint in Hamwic in the 8th century, before Alfred the Great made Winchester his capital.

Coins often featured both real and mythical creatures.



Which invaders shaped the development of Southampton the most?

What can coins tell us about Southampton's early history?

In what way are the coins similar?

In what way are the coins different?

What are the similarities and differences between the pre 1100 coins and Modern coins?

Similarities

Differences



Southampton



Which invaders shaped the development of Southampton the most?

What can coins tell us about Southampton's early history?

Why are coins important historical evidence?

Leaders

Religion

Skill and
artistry

Language

Links with
other places

Importance of
Southampton



Local History

Historic England and Teacher's Pet have come together to bring you a collection of free resources that you can use in your local history teaching.



**Historic
England**



Teacher's Pet

Who are Teacher's Pet?

Teacher's Pet have been providing downloadable and playable educational content to early years and primary school teachers for over 14 years. We cover all areas of the curriculum and use a team of in-house teachers and designers to create engaging and memorable concepts, that the children will love.

Why local history?

At [Teacher's Pet](#) we want to empower primary school teachers by giving them the tools they need to deliver inspiring and thoughtful lessons about the local area and its history. We believe local history teaching has such an important part to play in a child's wellbeing – helping to give children a sense of pride in where they live.

Our Local History project is designed to provide teachers across the UK with everything they need to successfully carry out a full scheme of teaching about their local area, through key enquiry questions and source led activities.

Working with [Historic England](#) gives us access to archived maps and photos for resources and information from knowledgeable local historians, as well helping us to provide the content to you free of charge.

For more information about our Local History project or to find out more about Teacher's Pet Classroom Resources, please visit our website.