

# HERITAGE COUNTS 2017

## North East and Tees Valley

### Introduction

Heritage Counts is an annual report about England's historic environment. The North East version is prepared by Historic England on behalf of the North East Historic Environment Forum. Heritage Counts 2017 focuses on conservation areas, which are places recognised by local planning authorities as having special architectural or historic interest that deserve careful management and extra protection.

Visitors to the Heritage Counts website can download new research commissioned to support this year's theme and can access a full set of local statistics about the historic environment in the North East and Tees Valley. For more information, please see [heritagecounts.org.uk](http://heritagecounts.org.uk) #heritagecounts

### 50 Years of Conservation Areas

Research commissioned for Heritage Counts 2017, to commemorate the 50th anniversary of conservation areas employs a novel approach to analysing trends in conservation areas by benchmarking performance against matched non-conservation areas (OCSI *et al*, 2017). The research provides a comprehensive review of conservation areas nationally using spatial data and national statistical indicators over time and particularly looked to understand trends in conservation areas in terms of 'good growth'. Head to the website for the **full report**.

### Love Durham

Durham City Conservation Area is one of the richest historic urban environments in the North East. It was designated in 1968 and includes a World Heritage Site as well as numerous listed buildings, scheduled monuments and other archaeology.

From the 1960s, the city centre saw substantial development; mostly retail, leisure and tourism-related, as well as housing and commercial space. Community involvement in the conservation area has guided this development in the ensuing decades.

The strength and longevity of public activity in planning illustrates both the magnetism and frustrations of place-making in Durham. In 2013, community interests established the 'Love Durham' forum to prepare a city-wide Neighbourhood Plan.

The forum has worked to strengthen the protection offered to local heritage assets (including the conservation area) by the Neighbourhood Plan, which is now being tested through strategic environmental

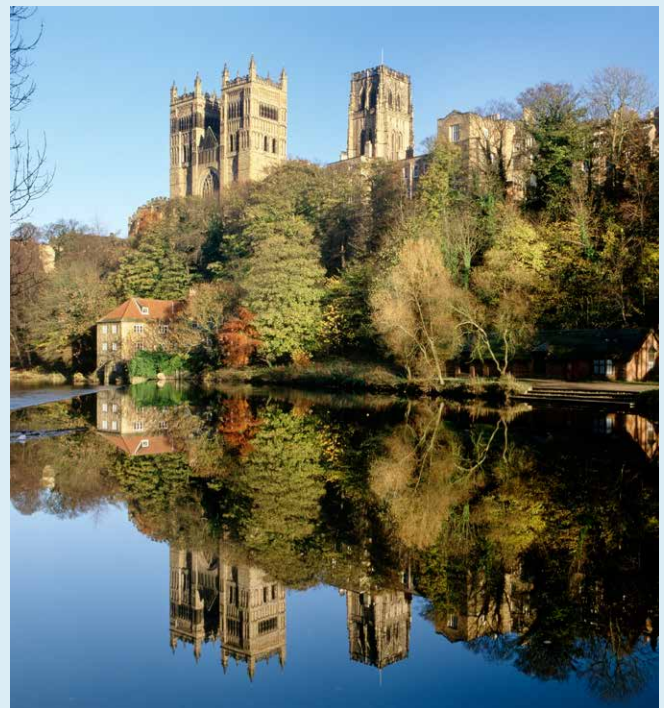


Image: Durham Cathedral. © Historic England

assessment. This dialogue has proved invaluable in deciding the future growth capacity of the city.

## Key developments in the North East and Tees Valley

### New initiatives to 2017

Historic England's **Heritage Action Zone** aims to unleash the power in England's historic environment – to create economic growth and improve quality of life in villages, towns and cities.

Working with local people and partners, including local authorities, Historic England is helping to breathe new life into old places that are rich in heritage and full of promise – unlocking their potential and making them more attractive to residents, businesses, tourists and investors. Historic England are doing this through joint-working, grant funding and sharing skills.

Historic buildings that have deteriorated through decades of neglect will be restored and put back into use; conservation areas improved to kick-start regeneration and renewal; and unsung places will be recognised

and celebrated for their unique character and heritage, helping instil a sense of local pride wherever there's a Heritage Action Zone.

The **Great Places scheme**, which is run by The Heritage Lottery Fund and Arts Council England, has already funded 16 pilot areas in England. The project will enable cultural and heritage organisations to make a change in how they work together and with other organisations in other sectors.

The scheme will adopt new approaches that encourage community groups to work more closely together, with the aim of art, culture and heritage contributing more to meeting local social and economic objectives.

The Great Places Scheme will also aim to enhance local cultural strategies, increase cultural education for children and young people to inspire a strong sense of place and local pride, and help local authorities to attract visitors, using arts and heritage to drive economic growth.

### Sunderland's Historic High Streets

Sunderland's 'Heritage Action Zone' encompasses two entire conservation areas and parts of a third. The Historic High Streets project covers some of the most historically significant parts of Sunderland's Old Town centre and also spans a substantial length of the riverfront.

The decline of Sunderland's industrial activity throughout the twentieth century led to the western migration of the commercial heart of the town, whilst redevelopment in the post-war period radically changed the character of the place.

The area now suffers from a mix of social and economic issues affecting its historic environment. There is a significant amount of Heritage at Risk, worsened by a lack of maintenance and unauthorised works to historic buildings.

More positively, there are now opportunities within the Heritage Action Zone that have the potential to promote growth. For example; the area is well-placed to extend the economic progress of the city centre towards the waterfront by re-using its historic buildings to attract investment, establish new business and create jobs. Events such as the Tall Ships Races 2018, combined with Sunderland's Great Places



Image: Fawcett Street, Sunderland. © Historic England

project and the City of Culture 2021 bid are also supporting the area's wider revitalisation.

## The Malings

The award-winning Malings development in the Ouseburn Valley conservation area is street-based urban community housing consisting of 76 eco-friendly homes with communal areas. The Ouseburn conservation area was one of the main cradles of the Industrial Revolution on Tyneside. The area is still rich in industrial heritage, which gives it a special and unique character that is important to maintain.

David Roberts, Director of Igloo said “The conservation area status places a requirement to give additional consideration to preserving the significance of the area. The design and layout of The Malings and its respectful relationship with neighbouring sites, was greatly informed by the Lower Ouseburn Valley Conservation Area Character Statement”.

Conservation character statements help to identify the special qualities of a place, and their capacity for future change. They help to develop a better understanding of the architectural and historical significance of a place to inform its future development.



Image: The Malings. © Jill Tate

## Townscape Heritage Initiative, Church Street

The Townscape Heritage Initiative (THI) is a Heritage Lottery Fund (HLF) scheme that aims to boost local economies with vital employment and training opportunities, start-up spaces for small businesses and enhanced public places for residents and visitors. The HLF has awarded Hartlepool Council £1.2million as part of the THI scheme to deliver a project in the Church Street conservation area. The scheme will enable the council and local residents to conserve and rejuvenate historic buildings, improve the local environment and create new community projects. It will include a new public realm in Church Square, building grants and activities that will raise awareness of the historic environment of the area.

The area will be enhanced through the creation of businesses focused around creative, digital and media industries, whilst retaining and offering local graduates the opportunity to establish their own businesses. It is considered that this will help promote good growth within the wider regeneration



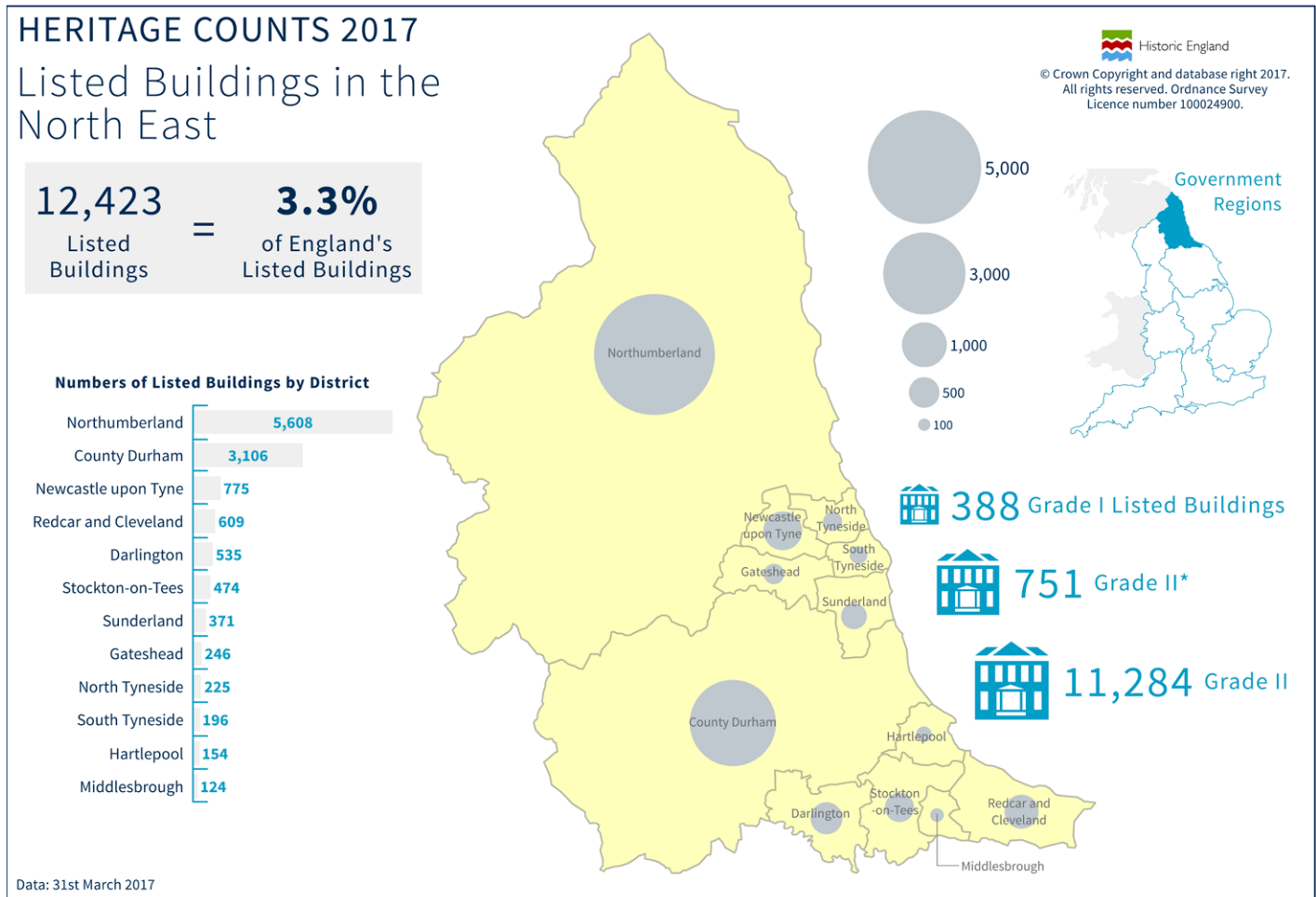
Image: Church Street. © Historic England

of the Borough – with an ambition that through targeted investment, Church Street will be at the heart of a vibrant Innovation and Skills Quarter.

# Historic Environment Statistics for the North East and Tees Valley

The North East and Tees Valley has a wealth of nationally and internationally important heritage assets. These are summarised in the table below.

Heritage asset	2017	% of English total 2017
World Heritage Sites	2	11%
Scheduled Monuments	1,397	7%
Listed Buildings	12,432	3%
Registered Parks and Gardens	55	3%
Registered Battlefields	6	13%
Protected Wrecks	1	2%
Accredited museums	63	5%
Designated collections	10	7%



### About the North East Historic Environment Forum

The North East Historic Environment Forum is a partnership of key organisations responsible for managing the historic environment in the North East. The following organisations are represented on the North East Historic Environment Forum: Arts Council; Association of Local Government Archaeological Officers; Country Land and Business Association; English Heritage; Heritage Lottery Fund; Historic England; Historic Houses Association; Institute of Historic Building Conservation; National Trust; Natural England; North East Cultural Partnership; North of England Civic Trust; Northumberland National Park Authority (for protected landscapes); Royal Institute of British Architects; Tyne & Wear Archives & Museums.

This **Heritage Counts 2017** Regional Report is edited by Laura Hartwell and produced by Historic England on behalf of the North East and Tees Valley Historic Environment Forum (NEHEF).

[www.HistoricEngland.org.uk/whats-new/in-your-area/north-east](http://www.HistoricEngland.org.uk/whats-new/in-your-area/north-east)

Twitter @HE\_NorthEast

(laura.hartwell@historicengland.org.uk)



Historic England

