

A considerable amount of textile was preserved at Finglesham, though most of this was replaced by metal oxides on the grave-goods; in many cases the clear fragments were very small, but some interesting varieties of weave were present. The weaving was of generally good quality, with high thread counts; only two pieces, both from men's graves (Grave 1.2, 86.3) could be described as coarse, though heavier fabrics may well have been present, as being most probably the outer layers they would have been the first to decay. The types of weave present include four-shed twills, tablet-woven braids, and an unusual preponderance, for an Anglo-Saxon site, of plain (tabby) weaves.

Of the twills, one is so far unique in England, a fine "rosette" twill in flax from a bronze bowl in a 6th century woman's grave, (Grave 203.3. fig.3). The only comparable material so far available is described by Dr.H.-J.Hundt from two German sites, Niederstotzingen (Alamannisch) and Sirnau (Merovingian). These are rather coarser than our twill, and since both are replaced Dr.Hundt suggests they are of wool, reproducing the Niederstotzingen weave in two colours.⁽¹⁾ There is no trace of dyeing in our linen twill, and the attractive pattern texture shows without any addition of colour.

None of the other twills is well preserved, and all have parallels nearer home. Most have Z spinning in one thread system (warp) and S in the other, a general characteristic of the earlier better quality Anglo-Saxon twills, though in those which are obviously diamond (lozenge) patterns (graves 95.6; 203.15; 204.24,25) the thread in three cases is Z spun throughout.

Among the plain weaves, unreplaced fibres in three were identified by Dr.D.F.Cutler at Kew as agreeing with flax (Graves 35,83,144). Three others, though replaced, can be confidently described as wool, since they have differently spun threads in warp and weft (Graves 8.9, 82.15, 169.4) in two cases (fig.1,2) making patterns of stripes or checks in warp and weft. Fabrics are known from some Scandinavian sites where a checked pattern is produced entirely in a shadow effect by the different spinning directions of the yarns, without a colour change;⁽²⁾ but the plain weave does not throw up a texture pattern as well as a twill, and it seems likely that in the Finglesham weaves and similar ones from Muskling (Graves 448,975) two differently coloured or pigmented yarns were used. Another interesting striped pattern for which no comparisons can at present be found is the very fine plain weave from Grave 203 with paired threads at regular intervals (fig.4). This looks like undyed flax, but the fibres were carbonised and unidentifiable (p.90)

Apart from those with mixed spinning, it is difficult to tell which of the replaced plain weaves were flax and which wool. Anglo-

Saxon flax thread is inclined to be unevenly spun, though with more equal counts in warp and weft than in wool weaves, where warp threads generally predominate; but at Finglesham the "two-colour" weaves and the known linens are very close in counts - Grave 8, 24/16, 169, 24/10, and flax, Grave 35, 22/12, Grave 83, 17-19/14-16, Grave 144, 25-26/16-17.

A fine tablet-woven braid (Grave 203.5, Pl.) with a diagonal pattern has been sewn to the selvedge of a plain weave; as far as it remains the geometrical design, which must have been woven in at least two colours, is strikingly like those of Norwegian braids from Snartemo and Øvre Berge, the latter, particularly close to ours, being also sewn to a weft selvedge.⁽³⁾ Another coarser patterned tablet-weave braid in this grave came from waist level. These were the only braids preserved at Finglesham, though threads in Graves 13 and 62.A probably come from tablet-weaves.

In four graves (35,144,213,214) the loops of belt buckles seem to have been evenly wound round with thread. Whether this was in the nature of a repair or strengthening, or for decoration, done perhaps with coloured threads, it is impossible to say; the same winding appears to have been done on part of the iron mouthpiece of a purse (Grave 145.A). The practice has not so far been noted in other cemeteries.

A few dress details can be suggested. The presence of soft folds of leather behind metal objects at waist level in two men's graves (Graves 1 and 82) may indicate leather tunics or jerkins, though it is possible, at least in Grave 82, that the fragments come from a pouch. Three women's graves contain a number of different fabrics. In Grave 35, Z,S twill at the chest and waist may come from the dress, a coarser Z,Z twill at the hip suggesting a cloak, and the fine flax plain weave lying over this on the knees, buckle and femur a long headveil, reaching almost to the knees.⁽⁴⁾ Grave 157 shows roughly the same arrangement, a Z,S twill (?dress) at chest, hip and knee, a coarse plain weave (?cloak or overdress) at waist, hip and knee, and a fine plain weave (?veil) extending from chest to hip. In Grave 203 the plain weave with tablet-weave braid from the brooches on the chest should come from the neck of the dress, the Z,Z diamond twill near chin and waist the cloak, and the coarser braid at the waist may have been a girdle, or used to tie the keys to a belt.

The weaves replaced on men's shields and spears sometimes suggest that a covering cloak or blanket was spread over the whole contents of the grave, though it is possible that weapons may have been separately wrapped. The bronze bowls in Graves 203 and 204 were certainly wrapped in their linen cloths, as seems to have been general practice whether the vessels were buried with an inhumation, as here and at Banstead Down, Surrey, or were used for cremations, as on some Suffolk and Lincolnshire sites and at Coombe in Kent. At Coombe the swords with the cremation

1. Hans-Jürgen Hundt, "Die Textilfunde" in P.Paulsen, Alamannische Adelsgräber von Niederstotzingen (Kreis Heidenheim), Veröffentlichungen des Staatlichen Amtes für Denkmalpflege Stuttgart, Reihe A, Heft 12/11 (1967), Grave 3a, Pls.3,4; "Die Textilfunde" in Robert Koch, Katalog Esslingen, Teil II. Die merowingischen Funde Veröffentlichungen d.Staatl. Amtes f.Denkmalpflege Stuttgart, Reihe A, Vor-und Frühgeschichte, Heft 13/11, 1969, Grave 217, abb.8, Pl.116.2.
2. Margrethe Hald, Olddanske Tekstiler, Copenhagen, 1950, pp.143,417-8, figs.68,69,74,82.
3. Bjørn Høgen, Norske Oldfunn VII: Snartemofunnene, Oslo, 1935, Pls.XIV,XV,XVIII.
- 4.
5. E.Crowfoot "The Textiles" in Hilda R.Ellis Davidson & Leslie Webster, "The Anglo-Saxon burial at Coombe, Kent", Medieval Archaeology,XI, 1967, pp.37-39. See also pp.10-16.

Inventory

Grave 1. M.

7th cent.A.D.

1. Buckle. 702. (waist)

Fragment of solid leather belt where top plate of buckle has broken away. Front of buckle, lying above broken plate, area 2.1 X 1.7 cm replaced textile, Z,Z, plain weave, count c.20/15 per cm (first count clear 10/ on 5 mm). Heavily infested with replaced insect pupae. Underneath buckle, area c.4.0 X 4.0 cm replaced soft-surfaced leather, suggesting a garment, perhaps a jerkin, fastened by the belt; another scrap of plain weave lying above it beyond the buckle plate. (See p. 2.).

2. Knife. 701. (pelvis)

On one side, replaced fragments coarse textile, Z,Z, count c.8/8 per cm, weave unidentifiable; other side, leather probably from sheath.

Grave 6. M.

2. Buckle. 830. (under forearm)

Front, area 2.0 X 2.0 cm, folded piece textile, too replaced for fibre identification, possibly flax, Z,Z, plain weave, count 20/15 per cm, spinning uneven; from its position, possibly sleeve. Under textile, leather, probably belt. Front of buckle, traces threads and leather.

Grave 7. F.

9. Chatelaine. 718. (left femur)

On link, replaced traces fine textile, one system fairly close, Z, other not clear; probably plain weave.

17. Iron fragment. 716. (l. of waist)

Deteriorated fine textile traces all over fragment, Z; at one end, knot of cord, possibly plaited, strands of mixed S and Z threads.

Grave 8. F.

9. Chatelaine. 719-725. (c.body, below pelvis)

Replaced areas fine textile, best 0.7 X 1.0 and 0.5 X 1.5 cm, the first in two layers; plain weave, counts in different places 12/8, 10/9, 11/8 on 5 mm (24/16, 20/18, 22/16 per cm), thread Z and S stripes in both systems, forming checks (fig.1. See p. 1).

Grave 13. M.

3. Purse mount. 734. (waist, l.)

Back of bronze, small scrap weave, Z threads, surface deteriorated, and area of replaced threads Z spun, 3ply. Replaced lump, area 1.4 X 0.9 cm, one surface flattened from contact with metal, Z threads possibly from unravelled Z,Z, twill, 11 to 5 mm, possibly part of fringe.

Grave 21.B. F.

3 (c). Casket handle. 754. (l.hip)

Small patch c.0.5 cm square Z,Z, plain weave, count 8/7 (16/14 per cm); under this, next to metal, mass deteriorated Z threads, probably a different textile.

5. Iron key loop. 755. (upper l.femur)

Tiny fragment replaced Z,Z plain weave round loop, similar to that on 3.

Grave 22. M.

7. Shield grip. 759. (l.of grave)

Area 1.3 X 0.7 cm replaced plain weave, Z one system, other practically no spin, count 28/22 (11 on 5 mm) per cm, very close, even. Underneath, layer very deteriorated textile, Z, probably coarser.

Grave 25. M.

10. Bronze belt fitting. 769. (inside l.elbow)

Inside, replaced fibres, probably leather. Back, replaced textile, Z,Z, probably twill, insufficient for further identification.

Grave 31. F.

3. Purse mount. 779. (l.hip)

Flat side, (a) small scraps replaced Z,Z plain weave, clear c.0.6 X 0.6 cm, count 8/6 per 5 mm. Stud side, (b) lumps deteriorated coarser weave, Z,S, replaced.

Grave 33. M.

3. Iron buckle. 806. (l.shoulder)

Fine replaced textile, area 1.6 X 2.0 cm, above top surface of chape, and traces below, of Z,S twill, too deteriorated for count.

808, detached area from 3, folds of fine textile crushed together, area 1.8 X 1.3 cm, Z,Z, plain weave, count 6/6 per 5 mm, now very open.

Grave 35. F.

4. Knife. 802. (l. of chest)

Replaced fragment, area 0.8 X 0.6 cm, very close fine Z,S twill, count impossible to take.

5. Keys. 810. (waist)

Remains of three replaced textiles:

(a) along one side of shaft, area c.1.3 X 0.9 cm, in soft folds, very fine regular plain weave, Z,Z, count 10/9 per 5 mm (20/18).

(b), under (a), i.e. next to iron, and also under key end, Z,Z, twill, too deteriorated for count, but coarser.

(c) all over other side of end and on shaft near ring, Z,S, finer twill, surface deteriorated.

6. Buckle. 809. (l.elbow)

Underneath, fine Z threads appear to have been wound evenly round the loop of the buckle, and also round the pin; on the loop at least 20 per cm, overlapping slightly, similar count on pin. (See Graves 144, 145.A., 213, 214). All over top surface of loop, above these threads, remains of replaced textile, Z,Z, probably plain weave, deteriorated.

7. Fragment of iron ?chape. 807. (inside l.femur)

Underneath, area 2.0 X 2.0 cm, patches textile in folds, Z,Z, plain weave, regular, count 11/6 on 5 mm, spinning fairly even. Kew fibre report (Dr.D.F.Cutler) Agrees reasonably well with flax.

8. Toggle button and ring. 801.

Fine replaced Z,S, twill, deteriorated.

Grave 45. M.

3. Knife. 794. (under pelvis, l.)

Traces replaced threads on blade, one clear tiny fragment, 0.55 X 0.7 cm, Z,Z, plain weave, count 15/8 on 5 mm (30/16), appearance suggests flax.

Grave 50. M.

2. Buckle. 814. (r.waist)

Underneath chape, very deteriorated replaced textile, fine Z threads.

Above chape, small areas Z,Z, plain weave, count 9/8 on 5 mm.

Grave 53. F.

1. Knife. 816. (c.waist)

Fragment replaced textile, 1.2 X 1.0 cm overall, Z,Z, plain weave, regular spinning and weaving, count 17/11 per cm.

Grave 57. F.

~~From beads.~~

~~Fragment threads, undyed, 22/2, very slight Z twist.~~

5. Iron ring. 861. (l.waist)

Traces all over, two very small clear areas above and below, Z,Z, plain weave, count 9/7 per 5 mm.

Grave 62.A. M.

3. Bronze belt plate. 989. (l.waist)

Remains of leather belt. On one bronze fragment, replaced textile, area 0.5 X 0.7 cm, Z,Z, plain weave, count 10/7 on 5 mm. Small lump replaced Z threads from above stud on plate may be from fringe or part of end warps of a braid (Cf. Grave 13.3).

4. Iron fragments. 982. (l.side of body)

?Knife, replaced leather on edge and tip, and traces of threads.

Curved iron piece, wrapping round one end, area 2.8 X 1.5 cm, fine replaced textile, one system Z, other uncertain, plain weave, count 10/7 on 5 mm.

Broken fragments, replaced leather.

Grave 66. ?M.

2. Iron buckle. 901. (l.waist)

Patch very deteriorated, replaced, probably twill, some Z threads.

Grave 82. M.

2. Iron angle. 873. (r.chin)

Area 2.0 X 1.3 cm, replaced fabric, Z,Z, probably twill.

6-7. Iron buckle with long chape. 876. (c.waist)

All along top of chape, over area 3.5 X 1.7 cm, replaced textile, fine, Z,Z, close plain weave, thread noticeably uneven in both systems, count 17/13-14 per cm.

14. Pouch complex, buckle. 886. (l.hip)

Inside bronze chape, leather strap fragment; leather also lying over top and underneath buckle. Against leather on underside of buckle, area 1.5 X 1.5 cm, fragments Z,Z, plain weave, count c.10/8 per 5 mm, replaced, but where best preserved threads variable.

15. Iron fittings with leather and wood. 886. (l.hip)

On two fragments, on opposite side of metal to leather and wood, areas c.5.0 X 1.2 and 1.1 X 1.0 cm, fine replaced Z,S, plain weave, count 22(Z)/15(S) per cm, very regular "rice" effect caused by the two spinning directions. Remains on other fragments seem to have coarser Z and S threads.

19. Lump of iron and leather (with 15)

Replaced textile in mass of small folds, Z,Z, plain weave, fibres like those on 14, i.e. probably flax. The leather lies on the other side of the iron in three soft folds (Cf. Grave 1).

Grave 83. M.

5. Buckle, bronze. 938. (l.waist)

Traces leather inside. On back at side of ring, patch 1.3 X 0.7 cm, partially replaced, Z,Z, plain weave, count 17/14 (taken as 7 on 5 mm) per cm (see 6.b). Kew fibre report agrees with flax, though less well preserved than Grave 35.7.

6. Iron knife. 939. (l. of body, waist)

At one end, ?near hilt, remains of possible coarse plait, replaced, width 0.6 cm, length preserved 1.3 cm, bunches of Z spun threads, probably simple 3-plait. Patches on this and other fragments of two replaced weaves, one fragment c.1.0 X 1.0 cm, having close folds of both pressed together, (a) very fine, regular, Z,Z, plain weave, count estimated 18/13 per 5 mm, c.36/26 per cm, (b), Z,Zm plain weave, regular, count 8/7 on 5 mm; other larger areas of this weave, best 1.1 X 1.4 cm with leather from sheath, present on other pieces of knife, count 19/16 per cm.

Grave 86. M.

3. Spearhead. 890. (r.of skull)

Replaced coarse textile, area 1.9 X 1.2 cm and other traces, Z,Z, count c.6-7/6 per cm, possibly plain weave, but not clear.

4. Iron knife. 889. (l.waist)

Three replaced textiles; one side, (a) area fine Z,S, deteriorated; other side, (b) curved fragment, area c.1.6 X 0.9 cm, Z,Z, plain weave, close, even, count 20/15 (7 on 5 mm) per cm, spinning rather uneven; (c) from another fragment, very coarse, Z,Z, threads c.3/2-3 per 5 mm, too little to tell weave, cf. textile on 3.

Grave 88. Child.

Iron knife. 948. (along l. forearm)

Patches deteriorated replaced textile, Z and probably S, ?plain weave.

Grave 95. M.

4. Spear. 893. (r. shoulder)

Patches replaced on socket, c. 1.2 X 0.7 cm, Z,Z, plain weave, poor surface.

5. Knife. 891. (l. waist)

Remains replaced leather from sheath both sides; on one, outside leather, area 2.1 X 1.7 cm, fine Z,Z, plain weave, very regular, count 22/18 per cm.

6. Buckle. 892. (l. waist)

Area 2.5 X 2.0 cm, underneath buckle, replaced Z,Z, twill, count 7/7 on 5 mm; diagonals go in opposite directions in different parts, i.e. chevron or diamond, surface deteriorated.

7. Gilt buckle. 878. (spine, facing r.)

Back plate, area c. 4.0 X 2.3 cm, replaced Z,Z, plain weave, count 26/17 per cm, weaving and spinning fine and regular; at one place a double or very lightly plied thread occurs, possibly a mistake, but see Grave 203.3 (fig. 4) regular paired threads at intervals.

Grave 97. M.

2,3. Iron belt plates. 951. (l. pelvis)

Covered all over both sides with at least three layers of fine replaced Z,Z, plain weave, open but regular, count 16/16 per cm, appearance of flax.

Grave 99. Unknown.

2. Buckle. 941. (l. hip)

Underneath, area plain weave, as in 3.

3. Buckle plate. 942. (l. waist)

Under mass of replaced insect cases, area 1.0 X 0.8 cm replaced Z,Z, close plain weave, irregular thread, count 18/16 (8 on 5 mm) per cm.

Grave 103. M.

3. Iron buckle. 839. (waist, r.)

All over surface of fragments, replaced Z,Z, plain weave, count 8/8 per 5 mm, deteriorated.

4. Iron ?knife. 835. (waist, l.)

Mass of leather on all pieces, occasional Z threads, one tiny fragment Z,Z, replaced.

Grave 108. F.

1. Iron buckle. 953. (r. of spine, waist)

Detached scrap replaced textile, c. 4 X 0.7 cm, Z,Z, plain weave, count estimated 7/5 on 5 mm.

3. Iron nail. 955. (under jaw)

Replaced textile both sides, one (a) 3.0 X 1.0 cm, Z,Z, plain weave, count c. 9/5 on 5 mm, surface poor; other side (b) all long nail, clear only 0.8 X 1.3 cm, Z,S, fine twill, count 7/7 on 5 mm, simple 2/2 where clear.

Grave 110. M.

1. Iron spear ferrule

Deteriorated replaced fibres probably leather.

Grave 120. F.

1. Fragments wood and iron. 1080. (l. femur)

Broken folds replaced textile round iron ?pin, areas 2.0 X 0.8, 1.8 X 0.9 cm, Z,Z, plain weave, count 24-26 (taken as 12-13 on 5 mm)/16 per cm.

Grave 133. M.

2. Buckle with bronze chape. 1006. (r. waist)

Inside chape, probably leather, replaced. Both surfaces buckle, clear patches over area 1.5 X 0.8 cm on top, replaced Z,Z, plain weave, count 8/8 per 5 mm.

Grave 130. F.

18. Iron chain. 1248. (l.waist)

All along links, patches fine replaced Z,Z, plain weave, count 13/10 on 5 mm

Above 15-18. Iron fragments. 1249.

Small area 1.0 X 0.7 cm, fine replaced Z,Z, plain weave, count 14/10-11 per 5 mm.

Grave 139. F.

3. Key. 1026. (l.hip)

Area 0.1.1 X 1.0 cm, replaced Z,S, twill, fine, 2/2 diagonal, count 0.9/8 per 5 mm (18/16).

4. Iron ring. 1028. (l.hip)

Deteriorated fragments Z,S, twill as on 3.

Grave 143. M.

1. Miniature spearhead. 1115. (r.shoulder)

Patches replaced, one clear 1.2 X 0.7 cm, replaced Z,Z, plain weave, count 7/5 on 5 mm, spinning and weaving regular, but yarn looks like flax.

Grave 144. M.

1. Bronze buckle and plate. 1116. (l.of spine)

Underneath plate, area 2.2 X 1.3 cm, undyed textile, Z,Z, plain weave, count 25-26/16-17 per cm, weave close and regular, spinning rather uneven. Kew fibre report Agrees reasonably well with flax.

4. Buckle. 1119. (r.hip)

Replaced threads wound closely all along loop of buckle, S, fairly coarse, 4 to 5 mm. (See Grave 35).

Grave 145.A. M.

19. Iron and wood, ?mouthpiece of purse. 1131. (l.upper arm)

Across end of iron piece, fragment plait or cord, soft Z threads; after this, area 1.3 cm to end of preserved piece, mass fine Z threads lying across; part nearest cord may be deteriorated weave, rest appears to have been thread wound round the iron, showing on both sides of piece, 13 threads to 5 mm. (Cf. threads on buckles, Grave 35, etc.)

20. Similar fragment. 1132.

More deteriorated traces ?weave, Z,Z, replaced, and Z threads round end.

Grave 157. F.

13. Iron fragments. 1170. (chest)

(a) Mass deteriorated folds replaced fine plain weave with coarser ?twill threads under on one piece; on another, area similar weave in folds, 1.5 X 1.0 cm, Z,Z, count 14/11 per 5 mm (28/22 per cm).

14. Iron fragments. 1171. (waist)

On all pieces, (b) areas replaced fine textile, but coarser than (a) on 13; largest area, 2.0 X 1.0 cm, Z,Z, plain weave, counts 18/11, 21/12 per cm.

15. Iron fragments. 1172. (l.hip)

Traces (c) Z,S, probable twill, on all pieces. Opposite side to twill on one, area 6.0 X 1.2 cm, (b) Z,Z, plain weave, count 22/12 per cm.

19. Iron complex. 1251. (l.femur)

Traces on all pieces, Z,Z, medium weight, probably (b); one tiny scrap, finer, Z,Z, plain weave, count at least 24/21 per cm, probably (a).

33. Iron handle. 1167. (at feet)

Wood and leather, with small area Z,Z, textile, replaced, in folds.

35. Iron fragments. 1174. (l.waist)

Small deteriorated areas Z,S, twill (c).

38. Iron rod. 1177. (l.hip)

Area 1.0 X 0.6 cm, replaced Z,Z, fine plain weave, count 27/18 (9 On 5 mm) per cm, i.e. (a), fine close weaving, yarn irregular.

40. Iron and bronze from chatelaine. 1179. (l., knee level)

Deteriorated textile all over, mostly Z,S, twill (c) replaced, but on one fragment Z,Z, plain weave, probably (b).

42. Iron fragments. 1181. (r.knee)

Area 3.0 X 1.5 cm, replaced, Z,S, twill (c), poor surface.

44. Iron fragments. 1183. (near 42)

Replaced Z threads.

4. Buckle. 1017. (l.pelvis)

Replaced area c.2.5 X 2.0 cm, and smaller area, Z,Z, plain weave, count 11/8 on 5 mm, appearance suggests flax. Traces leather belt inside plate.

Grave 163. F.

3. Iron buckle. 1189. (waist)

On top surface, above ring and pin, area replaced 1.3 X 0.7 cm fine Z,Z, plain weave, count 11/7 on 5 mm.

4. Iron including knife and steel. 1190. (waist)

Area 5.0 X 3.0 cm, replaced textile in two layers; under, against metal, (a) fine Z,Z, plain weave, count 22/15 per cm, round edge to underside: Kew fibre report, completely carbonised, fibre unidentifiable.

Over this, (b), area 3.5 X 2.5 cm, fine Z,S, twill, count 7/6 on 5 mm; only 2/2 simple diagonal preserved.

5. Iron ring and pieces from ?chatelaine. 1191.

Areas same two textiles as on 4, (a) 3.3 X 1.5 cm, curving over inner ring against iron, tiny fragment (b) above.

Grave 169. F.

4. Chatelaine. 1218. (l.waist)

Replaced patches of two textiles (a) just below ring, 0.7 X 1.1 cm, plain weave, Z spun one system (?warp), the other 2S,2Z,2S,2Z,2S,1Z preserved, count 24 (12 on 5 mm)/10 per cm (fig.2). Cf. Grave 8.9. (b) Patches on other iron scraps, best 3.0 X 0.8 cm, Z,Z, plain weave, count 13-14/13-14 (6-7 on 5 mm) per cm.

Grave 174. F.

22. Knife. 1222. (l.waist under forearm)

Deteriorated remains Z,S weave.

27. Iron from chatelaine complex. 1227. (l.hip, with 29,30)

Replaced area 2.1 X 0.8 cm, fold or double layer, fine Z,S twill, count 9(Z)/7(S) on 5 mm, chevron or diamond, 2/2, diagonals running differently in two places.

29,30. Iron fragments. 1229,1230.

29, replaced same twill, Z,S, count 7/6 per 5 mm; 30, same, deteriorated.

Grave 180. F.

7. Knife. 1047. (waist, l.)

Traces coarse Z threads, replaced, and scrap fine Z,Z, plain weave, count 8/7 on 5 mm, appearance suggests flax.

11. From chatelaine. 1030. (l.of body)

421. Coarse Z threads, and again folds fine plain weave.

425 (l.thigh). Coarse Zply threads perhaps for tying, fine plain weave on spoon and iron loop.

12. From chatelaine. 1030

422. Round loop and on fragments, fine Z,Z, plain weave, count 10/7 on 5 mm, replaced.

Grave 187. F.

16. Iron fragments. 1068. (chest)

Tiny fragments fine replaced twill, Z,S.

Grave 192. F.

13. Iron rod from chatelaine. 67187 O. (l.waist)

All along surface, traces replaced textile, Z,Z, plain weave, regular spinning and weaving, count 10/7 on 5 mm.

15. Chatelaine. 671878.

Replaced on iron with Roman coin, 1.3 X 0.5 cm, Z,Z, plain weave, close, count 16/12 (6 on 5 mm) per cm, thread in latter system thicker and softer.

Grave 196. M.

2. Belt plate. 671815. (o.body, hip)

Covered both sides with layers or folds replaced Z,Z, plain weave, very regular, counts 16-18/12, 15/11-12 per cm. Cf. Grave 97.2.2.

Grave 191. F.

9. Iron fragments and knife. 671849. (probably below waist)

On 9, 12, 13, (a) areas deteriorated Z, S, probably plain weave, count 5/5 on 5 mm; on 11, (b) fine very regular replaced Z, Z, plain weave, layers, count 12-13/7 on 5 mm. On 14 (knife) area probably leather.

15. Iron fragments. 671818.

Three layers or folds, replaced fine Z, Z, plain weave, count 21/14-16 per cm, covering whole of larger piece, and scrap on other side, all (b).

16. Iron fragment. 671848.

(b) Replaced Z, Z, plain weave, count 24/14-15 per cm, as on 11 and 15.

Grave 200. F.

9. Iron buckle. 671844. (r. shoulder blade)

Lump replaced textile, c.1.2 X 1.2 cm, fine, Z, Z, surface poor.

Grave 203. F.

6th century A.D.

3. Bronze bowl. 671921. (r. foot)

On base of bowl and broken fragments from base and one side, remains fine textile (a), best areas on bowl 2.0 X 0.8, 2.0 X 1.0, and on broken pieces scattered over 3.5 X 1.0 cm; thread undyed, Z, Z, rather uneven, weave "rosette" twill (fig.3), count 8/8 on 5 mm, i.e. 16/16 per cm.

Kew fibre report Agrees reasonably well with flax. Other areas on wood, (671922), of which one fragment, c.1.0 X 0.8 cm, lies on top of area c.1.5 X 2.0 cm of textile (b), very fine, white, Z, Z, plain weave, rather open, though this may be due to deterioration, count 20/20 per cm, with paired threads every third throw in weft (presumed) (fig.4); remains of another layer or fold on top, and threads from another perhaps beneath. Kew fibre report Carbonised, fibres almost all completely broken down.

5. Small squareheaded brooch (r. breast)

On back of square plate and across head of pin, replaced textile, total area c.2.2 X 2.4 cm, edge of ? garment with tablet-woven braid sewn to it (Pl.). Main weave, in confused folds across pin, deteriorated surface, shows clearly only in small area near the braid, Z, Z, warp finer and harder-spun than weft, plain weave, count 22/22 per cm (11 clear on 5 mm); paired thread at edge next to braid suggests this is selvedge. The braid is sewn to this edge with Z spun thread, three slanting stitches preserved passing through the first twist of the braid.

Thread Z spun
Braid, border (0.4 cm wide) in 4-hole tablet weave, probably 5 twists wide, three preserved lying Z, S, S, and traces of two others on exposed wefts; wefts 8 or possibly Sply, 18 per cm; geometric pattern centre of braid preserved for 1.0 cm, c.18-19 twists, in diagonal tablet-weave, pattern probably an interlace. Position of braid and sewing suggests neck edge of garment; surface showing probably the back (fig.5) unless the neck edge was folded over by the pinning. (see p. 2).

6. Small squareheaded brooch (pair to 5). 671796. (l. breast)

Traces similar plain weave to that on 5 on back of pin head; long strands on pin, possibly fringe, or unravelled threads from a rather coarser textile, replaced (possibly that on 18.).

14. Girdle hanger. 671807. (waist, l. side)

On iron fragment, area c.1.5 X 1.4 cm, replaced tablet-weave, Z spun S twists, 6 to 5 mm, Sply wefts, unfortunately confused, but certainly patterned, probably in similar weave to finer braid on 5.

15. Purse mount. 671808. (waist, l. side)

On pieces of mount, small fragments replaced textile, largest c.1.5 X 1.0 cm, Z, Z, fine regular 2/2 twill, count 8-9/7 on 5 mm, probably from the way diagonals go in different areas a broken diamond, but surface confused.

18. Garnet and silver brooch. 671802. (r. of chin)

Area 1.5 X 1.5 cm, replaced fragments Z, Z, twill, surface deteriorated, count estimated c.16/16 per cm, perhaps same weave as on 15.

Grave 204. M.

6th century A.D.

19. Bronze urn. 670881. (r.of skull)

Many fragments, best preserved c.2.0 X 2.0 cm, textile, undyed, Z,Z, thread fine, plain weave, count 15/14-15 threads per cm; openness of weave may be due to deterioration. Cloth lies in several layers, and was probably wrapped round the urn, covering the mouth (see p.).

Kew fibre report, too badly decayed for identification to be possible.

23. Knife. 671926. (across pelvis, below buckle)

On blade fragments, Z threads, deteriorated.

24. Sword. 671790. (r.of body)

Two small detached fragments near sword, replaced by bronze, 1.3 X 0.75 and 0.8 X 0.8 cm, probably from same weave, Z,S, spinning and weaving rather variable, twill 2/2, count 12(Z)/11(S) per cm (Z count taken as 6 on 5 mm); clear displaced reverse on larger piece, indicating chevron or broken diamond; sewing thread or broken thread with knot lies across part of reverse; smaller piece also shows displaced reverse.

25. Silver-gilt and garnet buckle. 671802. (r. of chin)

Traces of replaced textile over half the back of buckle, clearest 1.0 X 0.8 cm overall, Z,Z, twill, count estimated c.20/18 threads per cm.; as far as can be seen a broken diamond (fig.5), but surface damaged, and difficult to see how it repeats. (See p. 1.). Under twill, area replaced leather from belt.

Grave 205. F.

1. Brooch. 671868. (robbed grave, found in filling)

Clear area replaced textile, 3.0 X 2.0 cm, lying in two folds along pin and on pin head, Z,Z, plain weave, rather uneven, counts 14/12, 14/14 per cm, one thread system fine, the other noticeably thick and soft, cf. Grave 203.5 plain weave.

Grave 213. M.

1. Iron knife. 671822. (l.of waist)

Patches replaced textile, 1.0 X 0.6, 1.3 X 0.8 cm, Z,Z, plain weave, count 20/12 per cm (warp count taken as 10 on 5 mm), ?warp finer and harder spun than weft.

2. Iron buckle. 671869. (l. waist)

Patches replaced textile all over one surface, Z,Z, probably fine plain weave.

5. Iron object. 671835. (r. waist)

Areas replaced textile, one clear 1.0 X 0.6 cm, Z,Z, plain weave, very regular spinning and weaving, count 23/12 (taken as 6 on 5 mm) per cm.

9. Buckle. 671894. (l.tibia)

Coarse thread wound round buckle along front, covering area by the point of the pin, threads probably Z, but very little spin. Cf. grave 35, etc., though this example suggests strengthening or repair rather than decoration.

Grave 214. ?M.

1. Iron buckle. 671836. (under l.forearm)

On some fragments, leather traces presumably from belt or strap; top, along pin, fairly coarse S threads, possibly plaited; area underneath, 1.4 X 0.5 cm, replaced Z,S, twill as far as can be seen, count in Z system 5-6 on 5 mm. On one tiny fragment, possibly from the loop where the pin lay across, Z thread wound closely as in Grave 35 etc,

Grave 215. ?F

3. Iron with bronze studs, ?buckle plate. 671811. (waist)

Underneath, area 1.5 X 0.8 cm, replaced textile, twisted where stud went through, Z,S, twill, count 7(Z)/6(S) per 5 mm.

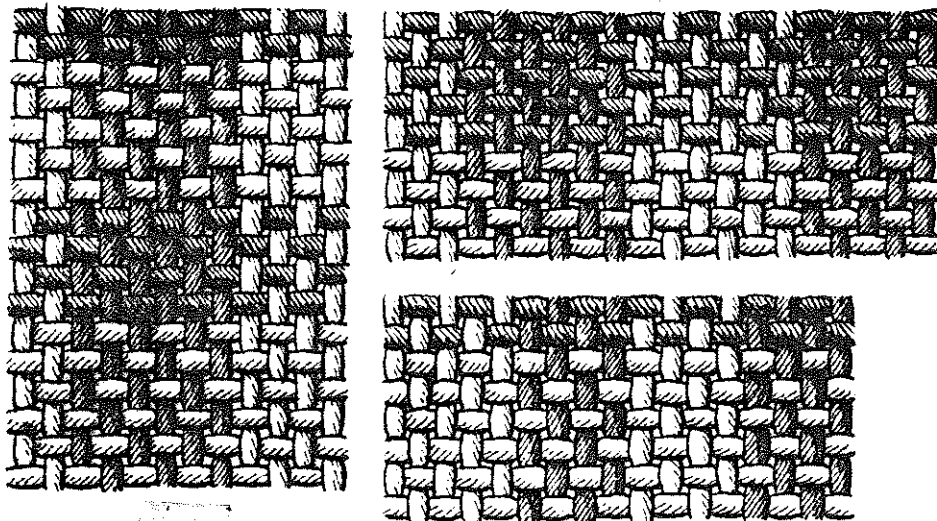


Fig.1. Grave 8.9
Checked plain weave

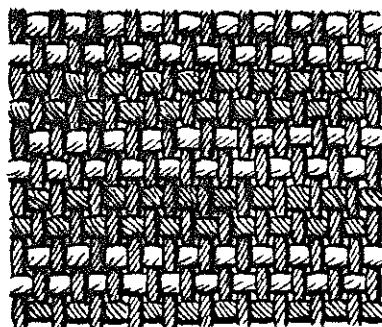


Fig. 2. Grave 169. a
850-1000 AD

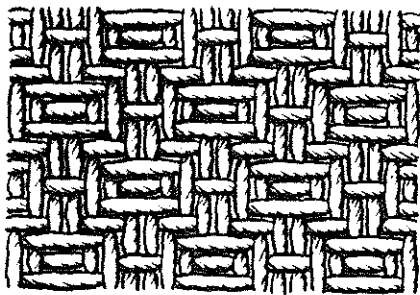


Fig. 3. Fashita Valley
Grave 203. 3(a)

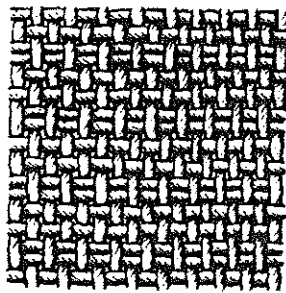


Fig. 4. Grave 203.3(b)
Plain weave with paired threads

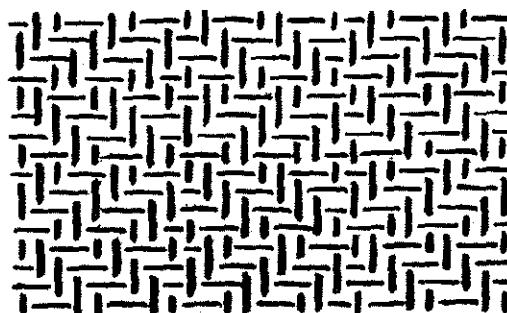
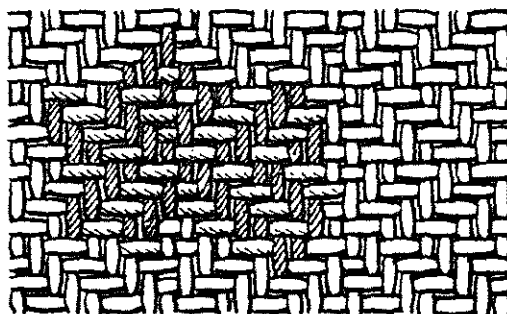


Fig. 5. Grave 204.5.
Broken diamond twill

Textile Catalogue

1674

the letters Z and S, the probable warp thread being placed first. Overall measurements of best fragments are given in cms, and weave counts in threads per cm, except where otherwise stated.

Grave	Object	Position textile	Fibre	Spin	Weave	Count	Measurement	Comments
1 (M)	1.buckle.702	front, above plate	(a) replaced	Z/Z	tabby	c.20/15	2.1 X 1.7	above solid leather belt (broken plate
		under buckle	replaced	-	-	-	c.4.0 X 4.0	soft leather, folds, ?jerkin
	2.knife.701	one side	(b) replaced	Z/Z	?	c.8/8	-	fragments against leather sheath
6 (M)	2.buckle.830	front	semi-replaced	Z/Z	tabby	20/15	2.0 X 2.0	folds; uneven spin, appearance flax; underneath, leather ?belt
7 (F)	9.chatelaine.718	on link	replaced	Z/?	?tabby	-	-	traces, fine threads
	17.Fe fragment.716	all over	replaced	S,Z	?plait	-	-	traces as above; knot of cord, mixed spinning, probably plaited
8 (F)	9.chatelaine.719-735		replaced	Z,S/Z,S	tabby	(20-24/16-18) 10-12/8-9 on 5mm	0.7 X 1.0, 0.5 X 1.5	two layers, plaid check, 3S,6Z,6S/4S,5Z,2S,6Z,4S/6S,4Z,5S,2Z (fig.1.,p.)
13(M)	3.purse mount.734	on back	replaced	Z/Z Z,Sply	?twill	11 on 5mm/ -	1.4 X 0.9	lump, unravalled weave and threads, ?fringe
21B(F)	3c.casket handle.754		replaced	Z/Z	tabby	8/7 on 5 mm	c.0.5 X 0.5	& underneath, against metal, mass deteriorated Z threads
	5. Fe key loop		replaced	Z/Z	tabby	-	-	tiny fragment
22(M)	7.shield grip.759		replaced	Z/?unspun	tabby	28/22(11 on 5mm)	1.3 X 0.7	very close even weave
		underneath	replaced	Z/Z	?	-	-	coarser weave, deteriorated
25(M)	10.Ae belt fitting.769	back	replaced	Z/Z	?2/2 twill	-	-	inside fitting, leather belt
31(F)	3.purse mount.779	flat side	(a) replaced	Z/Z	tabby	8/6 on 5 mm	c.0.6 X 0.6	
		stud side	(b) replaced	Z/S	?	-	-	damaged, coarser weave
33(M)	3.Fe buckle.808	detached	(a) replaced	Z/Z	tabby	6/6 on 5 mm	1.8 X 1.3	fine folds crushed together, open weave
		top surface?	(a) replaced	Z/Z	?	-	1.6 X 2.0	over area, fine
			(b) replaced	Z/S	2/2 twill	-	-	traces underneath, deteriorated
35(F)	4.knife.802		(a) replaced	Z/S	2/2 twill	-	0.6 X 0.8	very fine close weave, deteriorated
	5.keys.810	one side of shaft	(b) replaced	Z/Z	tabby	(20/18)10/9 5 mm	c.1.3 X 0.9	soft folds, very regular weave
		under, next iron	(c) replaced	Z/Z	2/2 twill	-	-	coarser, deteriorated
		other side, near ring	(a) replaced	Z/S	2/2 twill	-	-	finer
	6.buckle.809	underneath	? (b) replaced	Z/Z	tabby	-	-	deteriorated remains
		round loop	(d) replaced	Z	threads	20 per cm	-	wound round loop & pin, overlapping

	<u>Position textile</u>	<u>Fibre</u>	<u>Spin</u>	<u>Weave</u>	<u>Count</u>	<u>Measurement</u>	<u>Comments</u>
35(coin)	7.fragment Fe underneath ?(b) flax	flax	Z/Z	tabby	11/6 on 5 mm	2.0 X 2.0	undyed, patches in folds, spinning fairly even
	?chape.807						
	8.toggle,ring.801	?(a) replaced	Z/S	2/2 twill	-	-	fine, deteriorated
45(M)	3.knife.794	on blade	replaced	Z/Z	tabby (30/16)15/8 5mm	0.5 X 0.7	tiny fragment, appearance flax
50(M)	2.buckle.814	above chape	replaced	Z/Z	tabby 9/8 on 5 mm	-	small areas, & under chape,damaged
53(F)	1.knife.816		replaced	Z/Z	tabby 17/11	1.2 X 1.0	regular spin, weave
57(F)	5.Fe ring.861	all over	replaced	Z/Z	tabby 9/7 on 5 mm	-	tiny clear areas, above & below
62A(M)	3.Ae belt plate.989	on Ae	replaced	Z/Z	tabby 10/7 on 5 mm	0.5 X 0.7	Z threads above stud ?fringe or warp ends braid; leather belt fragment
	4.Fe fragments.982	curved round and	replaced	Z/?	tabby 10/7 on 5 mm	2.8 X 1.5	other fragments ?knife, leather, Z threads
66(?M)	2.Fe buckle.901		replaced	Z/?	?twill	-	very deteriorated patch
82(M)	2.Fe angle.873	(a)replaced	Z/Z	?twill	-	2.0 X 1.3	
	6-7.Fe buckle.876	top,long chape (b)replaced	Z/Z	tabby	17/13-14	3.5 X 1.7	close weave, uneven thread
	14.puch complex.888	under buckle (b)replaced	Z/Z	tabby	c.10/8 on 5 mm	1.5 X 1.5	threads variable
	15.Fe fittings.888	opposite side(c)replaced	Z/S	tabby	22/15	c.5.0 X 1.2, 1.1 X 1.0	regular "rice" effect; some remains on other fragments coarser
	19.Fe lump(with 15)	one side (b)replaced	Z/Z	tabby	-	-	mass soft folds, appearance flax; other side leather in soft folds
	other side						Cf.Grave 1, p.
83(M)	5.Ae buckle.938	back, ring (a)semi-replaced	Z/Z	tabby	17/14(7 on 5 mm)	1.3 X 0.7	
		flax					
	6.Fe knife.939	near hilt (b)replaced	Z	?3-plait	-	L.1.3,width 6 mm	bunches threads in units
		on this and (c)replaced	Z/Z	tabby	(36/26)18/13 5 mm	c.1.0 X 1.0	close folds pressed together, very very fine, regular
	other fragments						pressed to (c)
		?(a)replaced	Z/Z	tabby	8/7 on 5 mm	-	and on other knife pieces
	with leather sheath(a)replaced		Z/Z	tabby	19/16	1.1 X 1.4	
86(M)	3.spearhead.890	(a)replaced	Z/Z	?tabby	c.6-7/6	1.9 X 1.2	other traces, not clear
	4.Fe knife.889	one side (b)replaced	Z/S	?	-	-	fine, deteriorated
		curved piece (c)replaced	Z/Z	tabby	20/14(7 on 5 mm)	c.1.6 X 0.9	spin uneven, weave close, even
	on fragment ?(a)replaced		Z/Z	-	c.3/2-3 on 5 mm	-	very coarse scrap
88(child)	Fe knife.948		replaced	Z/?S	?tabby	-	patches, deteriorated

		<u>Position textile</u>	<u>Fibre</u>	<u>Spin</u>	<u>Weave</u>	<u>Count</u>	<u>Measurement</u>	<u>Comments</u>
92(M)	4.spear.893	on socket	?(a)replaced	Z/Z	tabby	-	c.1.2 X 0.7	poor surface
	5.knife.891	one side sheath	(a)replaced	Z/Z	tabby	22/18	2.1 X 1.7	very regular
	6.buckle.892		(b)replaced	Z/Z	2/2 chevron or broken diamond twill	7/7 on 5 mm	2.5 X 2.0	surface deteriorated
	7.gilt buckle.878	back plate	(a)replaced	Z/Z	tabby	26/17	c.4.0 X 2.3	regular weave, spin; one double or plied thread mistake (but see 203)
97(M)	2,3.Fe belt plates.951	both sides replaced		Z/Z	tabby	16/16	-	3 layers or folds, open, regular, all over sides; appearance ?flax
99(?)	3.buckle plate.942	under insects	replaced	Z/Z	tabby	18/16(8 on 5 mm)	1.0 X 0.8	irregular thread, close weave
	4.buckle.941							
103(M)	3.Fe buckle.839	all surface	replaced	Z/Z	tabby	8/8 on 5 mm	-	deteriorated
	4.Fe knife.835	on all pieces	replaced	Z/Z	?	-	-	tiny fragment; mass replaced leather
108(F)	1.Fe buckle.953	detached	(a)replaced	Z/Z	tabby	est.7/5 on 5 mm	0.4 X 0.7	
	3.Fe nail.955	one side	(a)replaced	Z/Z	tabby	c.9/5 on 5 mm	3.0 X 1.0	surface poor
		other side	(b)replaced	Z/S	2/2 twill	7/7 on 5 mm	0.8 X 1.3	small area clear
120(F)	1.wood, iron.1080	round pin?	replaced	Z/Z	tabby	24-26(12-13 on 5mm) /16	2.0 X 0.8, 1.8 X 0.9	broken folds round pin
133(M)	2.buckle, Ae chape.1000	both sides replaced		Z/Z	tabby	8/8 on 5 mm	1.5 X 0.8	leather inside chape
138(F)	18.Fe chain.1248	along links	replaced	Z/Z	tabby	13/10 on 5 mm	-	patches
	15-18.Fe fragments.1249		replaced	Z/Z	tabby	14/10-11 on 5 mm	1.0 X 0.7	small area
139(F)	3.key.1026		replaced	Z/S	2/2 twill	9/8 on 5 mm	1.1 X 1.0	fine, even
	4.Fe fragment.1028		replaced	Z/S	2/2 twill	-	-	deteriorated fragment
143(M)	1.miniature spearhead.1115		replaced	Z/Z	tabby	7/5 on 5 mm	1.2 X 0.7	regular, but appearance flax; patches
144(M)	1.Ae buckle.1116	under plate	flax	Z/Z	tabby	25-26/16-17	2.2 X 1.3	spin uneven, weave close, regular
	4.buckle.1119	along hoop	replaced	S	threads	4 to 5mm	-	wound closely along loop of buckle, Cf.Grave 35
145A(M)	19.Fegwood, ?purse.	across end	Fe replaced	Z	?plait	-	L.1.3 cm	soft threads
	1131	after this	replaced	Z	?threads	13 to 5 mm	-	or deteriorated weave? fine threads, some wound round iron
	20.similar.1132		replaced	Z/Z	?	-	-	and Z threads wound round end

	Position textile	Fibre	Spin	Weave	Count	Measurement	Comments
13.Fe fragments.1170		(a)replaced	Z/Z	tabby	(28/22)14/11,5mm	1.5 X 1.0	folds with coarse threads under
14.Fe fragments.1171	all pieces	(b)replaced	Z/Z	tabby	18-21/11-12	2.0 X 1.0	
15.Fe fragments.1172	on all other side	(c)replaced	Z/S	?twill	-	-	
19.Fe complex.1251	all pieces	(a)replaced	Z/Z	tabby	c.24/21	-	tiny scrap, & traces (b)
33.Fe handle.1167	wood,leather	replaced	Z/Z	?	-	-	in folds
35.Fe fragments.1174		(c)replaced	Z/S	2/2 twill	-	-	small area
38.Fe rod.1177		(a)replaced	Z/Z	tabby	27/18(9 on 5 mm)	1.0 X 0.6	fine close weave,irregular spin;
40.chatelaine.1179	all over	(c)replaced	Z/S	2/2 twill	-	-	and fragment of (b)
42.Fe fragments.1181		(c)replaced	Z/S	2/2 twill	-	3.0 X 1.5	poor surface
159(M) 4.buckle.1017		replaced	Z/Z	tabby	11/8 on 5 mm	2.5 X 2.0	& smaller scraps;appearance ?flax; leather belt inside plate
163(F) 3.Fe buckle.1189	above ring,pin	(a)replaced	Z/Z	tabby	11/7 on 5 mm	1.3 X 0.7	and tiny fragments (b) above
4.Fe knife.1190	under,round edge	(a)carbonised	Z/Z	tabby	22/15	5.0 X 3.0	
5.chatelaine.1191	over this	(b)replaced	Z/S	2/2 twill	7/6 on 5 mm	3.5 X 2.5	
	over ring	(a)replaced	Z/Z	tabby	-	3.3 X 1.5	
169(F) 4.chatelaine.1218	below ring	(a)replaced	Z/Z,S	tabby	24(12 on 5mm)/10	0.7 X 1.1	(fig.2) ?weft 2S,2Z,2S,2Z,2S,1Z
	other pieces	(b)replaced	Z/Z	tabby	13-14/13-14 (6-7 on 5 mm)	3.0 X 0.8	regular weave
174(F) 27.Fe chatelaine.1227		replaced	Z/S	2/2 twill, chevron or broken diamond	9/7 on 5 mm	2.1 X 0.8	fold or two layers
29,30.Fe fragments.1229.1230		replaced	Z/S	2/2 twill	7/6 on 5 mm	-	same; traces also knife.1222
180(F) 7.knife.1047		(a)replaced	Z/Z	tabby	8/7 on 5 mm	-	scrap, appearance ?flax
11.chatelaine.1030.421.425		(b)replaced	3ply	threads	-	-	coarse, ? for tying; traces (a)
12.chatelaine.422		(a)replaced	Z/Z	tabby	10/7 on 5 mm	-	
187(F) 16.Fe fragments.1068		replaced	Z/S	2/2 twill	-	-	tiny fragments, fine
192(F) 13.Fe rod,chatelaine.671870		replaced	Z/Z	tabby	10/7 on 5 mm	-	regular spin,weave
15.chatelaine.671878.	on Fe & coin	replaced	Z/Z	tabby	16/12(6 on 5 mm)	1.3 X 0.5	probably same, but ?weft thick,sor
196(M) 2.belt plate.671815	both sides	replaced	Z/Z	tabby	15-18/11-12	-	very regular spin,weave.Cf.Gr.97.
197(F) 9-14.Fe pieces & knife.671849.		(a)replaced	Z/S	?tabby	5/5 on 5 mm	-	small areas (9,12,13)
	on 11	(b)replaced	Z/Z	tabby	12-13/7 on 5 mm	-	layers, fine, very regular weave
15.Fe fragment.671818		?(b)replaced	Z/Z	tabby	21/14-16	-	covering whole piece,3 layers,fold.
16.Fe fragment.671843		?(b)replaced	Z/Z	tabby	24/14-15	-	

	<u>Position textile</u>	<u>Fibre</u>	<u>Spin</u>	<u>Weave</u>	<u>Count</u>	<u>Measurement</u>	<u>Comments</u>
203(F) 3.Fe buckle.671844.	lump	replaced	Z/Z	?	-	c.1.1 X 1.2	fine weave, surface poor
203(F) 3.Ae bowl.671921	base, fragments (a)	flax	Z/Z	rosette twill	16/16	2.0 X 0.8, 3.5 X 1.0, 2.0 X 1.0, 1.0 X 0.8	(fig.3.Pl.) undyed; spin uneven; many small scraps
	on wood	(b) carbonised	Z/Z	tabby	20/20	1.5 X 2.0	white, slightly open, paired every 3rd warp or throw (fig.4); 3 layer
5.small sq.head brooch. back	(c) replaced	Z/Z	tabby	22/22 (11 on 5mm)	2.2 X 2.4		across head
	(d) replaced	Z/Z, Sply	tablet weave	18-19 twists, 4-hole	18 wefts		folded, edge garment, ?selvedge (paired thread); sewn to it, tablet-braid, border Z,S,S, then 2 twists gone; diagonal pattern for 1 cm (fig. , Pl. , p. traces; long unravelled threads
6.small sq.head brooch.671796	(c) replaced	Z/Z	tabby	-	-	-	fragment coarser braid than (d), patterned?
14.girdle hanger.671807.	(e) replaced	Z/Z, Sply	tablet, 4-hole	6 twists	5 mm	1.5 X 1.4	surface confused
15.purse mount.671808.	(f) replaced	Z/Z	2/2 twill, chevron, or broken diamond	8-9/7 on 5 mm	1.5 X 1.0		
18.garnet & Ag brooch.671802	?(f) replaced	Z/Z	2/2 twill	est.16/16	1.5 X 1.5		surface poor, no reverses clear
204(M) 19.Ae urn.670881	wrapped round (a)	flax?	Z/Z	tabby	15/14-15	2.0 X 2.0	undyed, many fragments, openness due to deterioration? (p. reverse with sewing thread or knot across on largest piece
24.sword.671790	detached (b) replaced	Z/S	2/2 twill, chevron or broken diamond	12/11	1.3 X 0.75, 0.8 X 0.8		
25.silver-gilt buckle. back	(c) replaced	Z/Z	2/2 twill, broken diamond	c.20/18	1.0 X 0.8		surface damaged, repeat not clear (fig.5)
671802							
205(F) 1.brooch.671868	pin, pin-head	replaced	Z/Z	tabby	14/12-14	3.0 X 2.0	folded, one thread fine, one thick, soft; Cf.Grave 203
213(M) 1.Fe knife. 671822		replaced	Z/Z	tabby	20 (10 on 5mm)/12	1.0 X 0.6, 1.3 X 0.8	?warps harder spun, weft soft
2.Fe buckle.671809.	one surface	replaced	Z/Z	?tabby	-	-	
5.Fe object.671835		replaced	Z/Z	tabby	23/12 (6 on 5mm)	1.0 X 0.6	and small areas
9.buckle.671894		replaced	?Z	threads	-	-	wound round front by pin point, coarse; ?repair (Cf.Gr.35)
214(M) 1.Fe buckle.671836.	underneath (a) replaced	Z/S	?twill	5-6 on 5mm/?	1.4 X 0.5		with leather from belt
	along pin (b) replaced	S	?plait	-	-	-	fairly coarse, lying along pin
	on loop fragment	replaced	Z	threads	-	-	wound round closely, Cf.Gr.35
215(?F) 3.Fe, Ae studs.671811.	underneath	replaced	Z/S	2/2 twill	7/6 on 5 mm	1.5 X 0.8	fabric twisted where stud went through