

Ancient Monuments Laboratory
Report 109/87

IDENTIFICATION OF WOOD ASSOCIATED
WITH METALWORK FROM CATTERICK,
NORTH YORKSHIRE.

Jacqui Watson

AML reports are interim reports which make available the results of specialist investigations in advance of full publication. They are not subject to external refereeing and their conclusions may sometimes have to be modified in the light of archaeological information that was not available at the time of the investigation. Readers are therefore asked to consult the author before citing the report in any publication and to consult the final excavation report when available.

Opinions expressed in AML reports are those of the author and are not necessarily those of the Historic Buildings and Monuments Commission for England.

Ancient Monuments Laboratory Report 109/87

IDENTIFICATION OF WOOD ASSOCIATED
WITH METALWORK FROM CATTERICK,
NORTH YORKSHIRE.

Jacqui Watson

Summary

Identification report of wood preserved by contact with
corrosion products of selected metalwork, from Catterick
Bridge and Catterick Racecourse.

Author's address :-

Ancient Monuments Laboratory
Historic Buildings & Monuments Commission
23 Savile Row
London W1X 2HE

01 734 6010 x521

Identification of organic material associated with metalwork from Catterick, North Yorkshire.

Catterick Bridge

8310041

240-69

Iron binding with mineral preserved wood on the reverse, a conifer probably Abies sp. (Silver fir) or Cedrus sp. (cedar). Neither of these two woods are indigenous to Britain, but are commonly available in the Mediterranean. In the Roman period containers for transporting goods were often made from these conifers, and possibly this binding belonged to a box which was originally made in southern Europe.

SEM No.B83



138:6 Radial section of conifer showing cross field pitting.

8310058

240-142

Iron nail with mineral preserved wood, possibly Fagus sp. (beech).

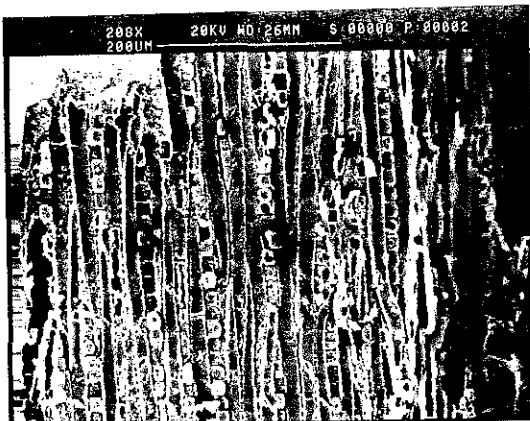
SEM No.B88

8310074

240-86

Iron strap with mineral preserved wood on the reverse, probably Populus sp. (poplar) or Salix sp. (willow).

SEM No.B89



138:3 Tangential section with homogenous rays.

8310355

240-1029

Copper alloy and iron object with mineral preserved
wooden handle, Tilia sp. (lime).

SEM No.B90

Catterick Racecourse

8413549

273-25

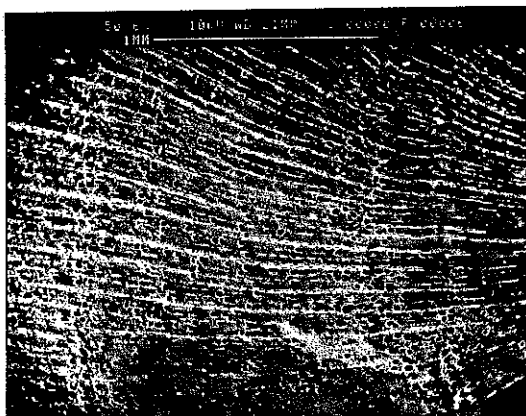
Socketed iron tool with mineral preserved Quercus sp.
(oak) on the outside.

8413573

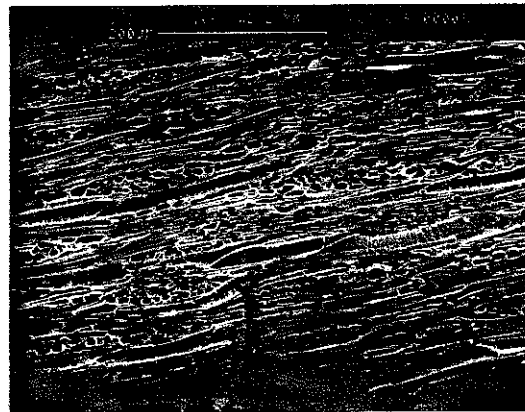
273-58

Charcoal from inside of copper alloy finial,
Prunus sp. (cherry), made from stem or branchwood.

SEM No.B84



137:7



137:8

137:7 Cross section.

137:8 Tangential section, spiral thickening in vessels and
multiseriate rays.