

Ancient Monuments Laboratory
Report 60/89

PLANT REMAINS FROM 118-26 WALMGATE,
YORK.

Philippa Tomlinson BSc

2400

AML reports are interim reports which make available the results of specialist investigations in advance of full publication. They are not subject to external refereeing and their conclusions may sometimes have to be modified in the light of archaeological information that was not available at the time of the investigation. Readers are therefore asked to consult the author before citing the report in any publication and to consult the final excavation report when available.

Opinions expressed in AML reports are those of the author and are not necessarily those of the Historic Buildings and Monuments Commission for England.

Ancient Monuments Laboratory Report 60/89

PLANT REMAINS FROM 118-26 WALMGATE,
YORK.

Philippa Tomlinson BSc

Summary

A total of forty-seven samples has been examined from the Walmgate excavation, ranging from the 9th to 20th centuries in date. Although many of the later samples were virtually barren of biological remains, the 9th-11th century pits had some well preserved assemblages suggesting that they were cess pits. The later pits, which may have been associated with other activities, such as industrial processes, did not contain any interpretable plant assemblages. Copies of the Appendices are held at the Ancient Monuments Laboratory and the Environmental Archaeology Unit.

YAT Site Code: 78-9.8

Author's address :-

Philippa Tomlinson BSc

Environmental Archaeology Unit
University of York
Heslington
YORK
YO1 5DD

Introduction

The site, which produced a sequence of deposits spanning a thousand years, was excavated in 1978 and 1979. The earliest occupation evidence found was of post-Roman date. Settlement slowly increased in density throughout the Anglo-Scandinavian and early medieval periods. The main features in the medieval and post-medieval periods were a series of three timber-framed structures on the street frontage with associated pits to the rear of the properties.

General laboratory and interpretative methods

Laboratory methods used by the Environmental Archaeology Unit are described in detail elsewhere (Kenward *et al* 1980, Kenward *et al* 1986, Hall forthcoming). In brief, the GBA (general biological analysis) samples were examined by two or more of the Fellows when they were first brought to the laboratory from the store. The sediment and its inclusions were described using a standard recording sheet. This description is given for each sample in the results section below. A decision was then made on the processing required, this is also indicated below.

The processing carried out on each sample is shown after the description. The majority of samples were processed for insects using a one kilogramme 'test' sample (T) (Kenward *et al.* 1986). Plant remains were usually examined from the wet residues (in water) and floats (in alcohol) left after insect processing. They were then recorded using the 'rapid scanning' technique and a four point scale of abundance (Hall, forthcoming). Some of the earlier samples were processed for plant remains separately (plant macrofossil sample or M). These were usually 0.5kg sub-samples washed through a bank of sieves (minimum mesh size 300 microns) and then sorted in water. Plant remains were also recorded from the bulk sieved (BS) samples which had been previously processed. The residue (R) and/or washover (W) were examined for plant remains. Samples processed for human intestinal parasite eggs (P) and for loss on ignition (S) are also noted.

The botanical record is stored in a text file (currently walm.dat) on the University of York mainframe VAX cluster computer, and analysed using DATATRIEVE. The complete lists of taxa and other material for each sample are given in the Appendix.

Interpretation of the botanical material follows the system which Dr Allan Hall has developed (Hall forthcoming). This analyses the plant taxa according to ecological groups taking into consideration the semi-quantitative scoring of each taxon per kilogramme as well as the strength of the affinity of the taxon to each of the ecological/use groups to which it is assigned. The results of this analysis are shown in the Appendix. The abbreviations of the ecological groups which are used are also listed in the Appendix.

Processing methods

183 samples were taken from the site. Ten, from pit fills, were examined by Laura Chapman in 1984. The rest were described and processed in 1987. 41 samples were 'tested' and a further 25 were treated in other ways (BS, Spot samples etc). 79, whose soil

descriptions have not been included here, were described, but no further analysis was carried out. The final 38 samples have been mislaid and could not be found in the store in 1987.

The site

The publication of the archaeological evidence from this site is apparently not imminent. There is no draft or even archive report available. For the purposes of this report, therefore, the samples from the site have been roughly grouped by type of feature and date using information from Brinklow (1984) and from the original sample forms. It should be noted that further work may well alter the dating of some of them. The majority of samples are from either layers or pit fills.

For a few BS samples lacking sample numbers or sample forms, only the context number was available. It has not been possible, therefore, to include some of these, although they probably related to the 18th c. clay-lined, bone-filled pits.

GROUP 1 ?Natural silt

Two samples were taken from this layer at the base of the site. One has been examined for plants.

GROUP 2 9th-10th century

Eleven samples were taken from a gully fill, pit fills and the backfill at the bottom of a well dating from the 9th-10th century. Five M's and seven T's have been carried out.

GROUP 3 10th-11th century

This was a 10th or 11th century accumulation layer overlying a paved surface. The excavator wanted to know if there had been slow or rapid accumulation. One sample was taken, two 'tests' have been carried out. There was also one sample from a 10th-11th century pit in this group.

GROUP 4 11th-12th century pits

These pits and the backfill of a robbed out bedding trench, presumably related to the domestic occupation at the front of the site. Five samples were taken and one spot; four 'tests' and two plant macrofossil samples have been examined.

GROUP 5 11th - 13th century various layers

32 samples were taken from a series of 11th, 11th-12th and 12th-13th century floors, occupation build-ups or levelling make-ups, and some samples associated with hearths. 32 samples were taken, ten 'tests' and ten plant macrofossil samples have been processed.

GROUP 6 13th, 14th and 15th century layers

Twelve samples were taken from several 13th and 14th century layers and possible floors and a 14th-15th hearth debris layer. Four 'tests' and two BS samples have been processed.

GROUP 7 16th-18th century

This group consisted of various pit fills dating from the 16th to 18th century. A total of thirty-eight samples were taken. Five 'tests' and one plant macrofossil sample have been processed. This group includes the so-called "parchment pits", which are thought to be steeping pits. They were clay-lined and were back-filled with material including large quantities of sheep metapodials (O'Connor 1984). Several samples from these pits were bulk sieved. A single GBA was taken from the only one of these pits which was described as having a "peaty" fill. A 'test' was carried out on another sample which had been originally collected for bulk-sieving.

GROUP 8 19th-20th century

Nineteen samples were taken from 19th century pits, one 19th century trench and two Victorian deposits, one a possible floor, the other a pit fill or 'seed bed'. 'Tests' have been carried out on a total of 7 samples.

Other samples

Five samples are unaccounted for. They have been bulk sieved and are probably from group 7. Thirteen timber identifications have been carried out by Dr A R Hall. Samples 47-55 (no context number given) were taken in a vertical column of soil, dug by a machine outside the excavated area. They were sampled to provide a comparative soil profile, as there is no archaeology, no further work has been done on them.

Results

GROUP 1

Context 3474, Sample 171

No sediment description of this sample. MTPS BS

This sample was thought to be of natural silt but as it contained seeds such as Cannabis sativa (hemp) and Hordeum sp. (barley), is clearly not 'natural'. Not many taxa were present, they were mostly wasteland or arable weeds. There were very large numbers of Urtica dioica seeds.

GROUP 2

Context 3459, Sample 157

Dark, grey-brown, moist-wet, plastic-crumbly, homogeneous, silty herbaceous detritus, with wood fragments and faecal concretions present. MT BS.

This 10th century gully fill had quite a good range of taxa. Some suggested food, for example, wheat/rye 'bran', Apium graveolens, Satureja hortensis, Vaccinium sp., Linum ussitatissimum and Agrostemma githago, which is a typically Anglo/Scandinavian type of assemblage. The M sample also contained faecal concretions, Avena sp. grain (including 'bran' fragments) and chaff, Bromus sp. grain and chaff, Allium porrum epidermis and Vicia faba hila.

Context 3450, Sample 167

Brown, moist-wet, plastic, homogenous amorphous organic herbaceous detritus with moss. MTPS BS.

The 'test' sample from this 9th-11th century pit adjacent to a well, or possibly a cistern, contained Ficus carica, Malus sp., Prunus spinosa, Linum ussitatissimum, Apium graveolens and a range of other material suggesting cess. The M sample contained faecal concretions, cereal 'bran', Linum ussitatissimum, Allium porrum, Avena sp(p)., Pteridium aquilinum and an oak bud.

Context 3450, sample 167B

This spot sample of 80g, included a mat of moss fragments in no particular structure but almost certainly an anal wipe as there were Trichuris eggs, food and arable weed seeds present. The mosses were the usual species found to be used for this purpose. There were several Cladium mariscus fruits.

Context 3468, samples 168 and 169

Sample 168: Dark brown-black, moist, plastic-crumbly, slightly heterogeneous, humic, silty, amorphous organic, with charcoal, wood fragments and bark present. TMPS BS.

Sample 169: Dark grey-brown, homogeneous, humic, silt with herbaceous and woody detritus, wood fragments. TMP BS.

This 10th century pit fill provided a very rich assemblage mostly consisting of weeds waste ground and grassland taxa, but also flax, charred cereals, hemp, opium poppy and hazel. The M sample contained woody and strawy material with Avena caryopses and chaff. The samples were rich in plant remains but the indications of faecal material were few.

Context 3476, samples 175 and 176

Sample 176: Dark grey, plastic, moist, slightly sandy silty clay with charcoal and small stones present. TPS.

Sample 175: No description for this sample. MT.

Both these samples from the basal deposit of the backfill of a well shaft contained many weed seeds, little sign of food plants or economic taxa and mostly such things as Polygonum sp., Urtica sp., Chenopodium murale.

Context, 3477 samples 172 and 174

Sample 172: Dark red-brown, silt with amorphous organic herbaceous detritus with concretions present. T.

Sample 174: No description for this sample. MT.

These two samples from a 9th-10th century pit fill contained a rich assemblage of taxa including some food plants such as sloe, flax, opium poppy, hop and Vaccinium sp. and many weeds, grassland and wetland taxa.

Group 3**Context 3463, sample 170**

Mid-dark grey-brown, moist, plastic-crumbly, slightly heterogeneous, silty clay, with stones and bone fragments present and charcoal common. MTPS BS

This sample was from an accumulation of material overlying a paved surface. There were few plant remains, mostly weeds and wetland taxa including many sedges and such plants as Isolepis cetacea, Eleocharis palustris and Ranunculus sceleratus. They do not really help in the interpretation of the rate or nature of the accumulation of this deposit, as desired by the archaeologist.

GROUP 4**Context 3432, sample 137**

Dark grey-brown, moist, crumbly, slightly heterogeneous, silty, herbaceous detritus, with mottles. MPS BS.

This was a rather organic sample from the back-fill of a robbed out bedding trench. The M contained quite a lot of hay/straw, moss and wood fragments but no cess. Preservation of the plant remains was poor.

Context 3433, samples 144 and 155

Sample 144: Black, laminated, fibrous, homogeneous, humic silt. MTPS BS.

A sample from an 11th-12th century pit fill which contained indications of faecal material, several mosses (twelve taxa), faecal concretions, Avena sp. (waterlogged caryopses) and also monocotyledonous epidermis fragments. There was a large number of taxa, food plants included Vicia faba and Pisum sp.. There was also a nodal sheath tooth from an Equisetum sp. stem (see figure) identified by the characteristic sculpturing around the stomata.

Sample 155 was a spot sample of Polytrichum commune shoots with leaves.

Context 3475, sample 163

Dark grey-brown, moist, crumbly, homogeneous, humic silt with charcoal, wood fragments and herbaceous detritus present. MTPS BS.

The M sample, from this 11th century pit fill, contained quite a large assemblage of weeds and wetland taxa together with such things as Linum usitatissimum, Cannabis sativa and cereal remains.

GROUP 5**Context 3358, sample 103:**

This was a spot sample consisting of Alnus charcoal.

Context 3405, samples 124 and 126

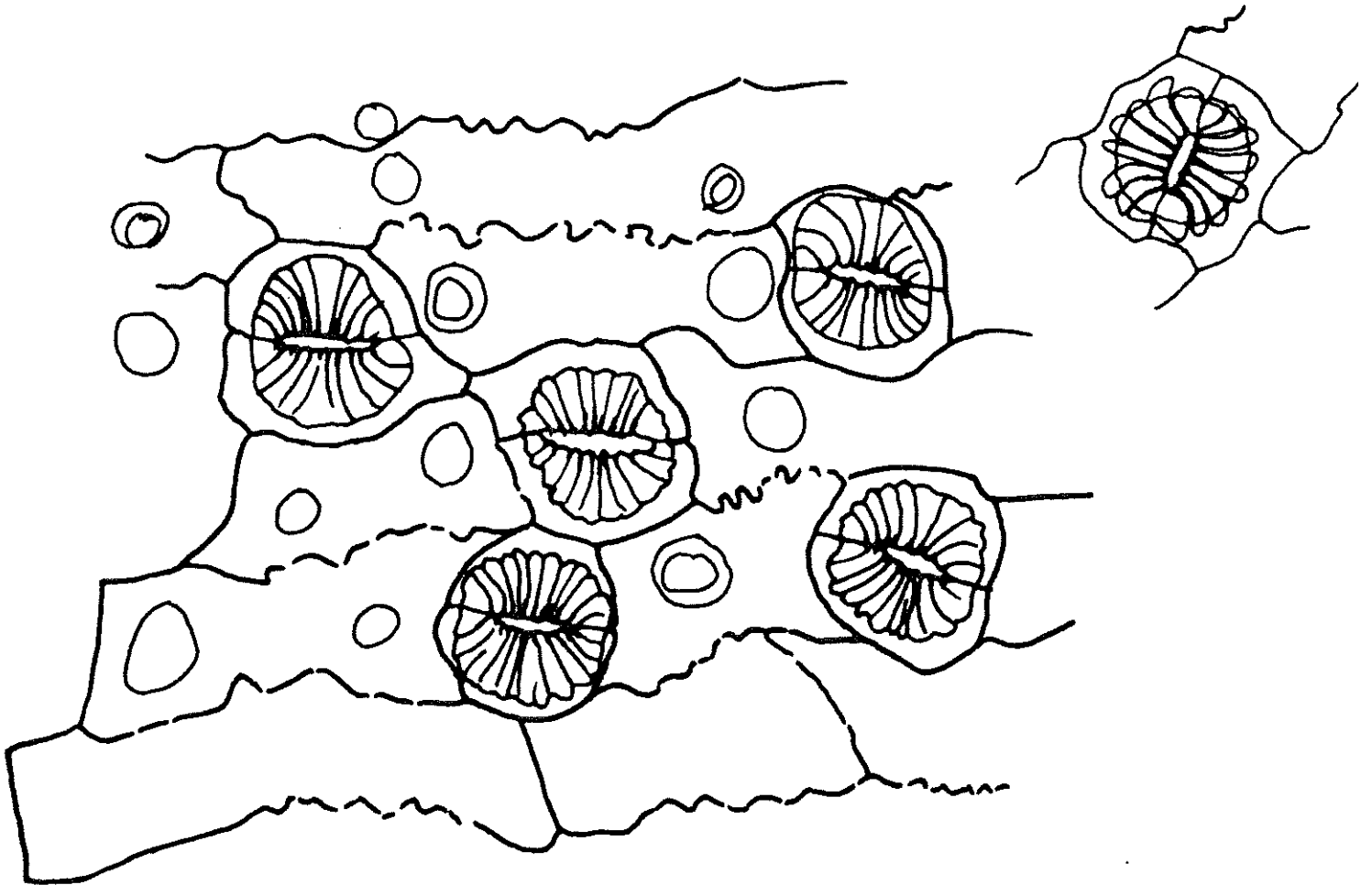
Sample 124: Dark grey, moist-wet, crumbly slightly heterogeneous, slightly sandy, clay silt, with orange burnt soil present, with charcoal. T.

Sample 126: There is no sediment description of this sample which was taken for the identification of charcoal, although a more detailed examination was carried out. T.

Sample 126 from this 11th-13th century floor deposit contained charcoal, charred grain, including Avena grains and chaff and ?burnt straw. The charcoal was thought to be possibly from burnt wattle. There was also barley, rye and some arable weeds. Sample 124 had a few more taxa than 126, there was a little charcoal, some charred Avena sp., barley and indet cereal grains, and some arable weeds.

Figure (opp. page 8).

Epidermis of Equisetum sp. showing the pattern of sculpturing around the stomata.



Context 3401, sample 121

Light grey-brown, dry, crumbly, homogeneous, sandy silt with ash common. T.

An 11th-12th century floor deposit, adjacent to a casting pit which contained no plant remains apart from some rootlets.

Context 3416, sample 132

Mid grey-brown, moist, plastic to crumbly, homogeneous, slightly sandy silty clay. TPS.

Very few plants remains except Sambucus nigra and indet. charred grain fragment were recovered from this ?11th-12th century silty layer which was possibly an occupation floor deposit.

Context 3423?, sample 143

Dark grey-brown, moist, crumbly and somewhat layered, homogeneous, humic, slightly sandy silt. TPS BS.

This sample from an 11th-12th century floor deposit or backfill was fairly organic and contained weeds, grassland plants as well as some hints of faecal material, for example, cereal 'bran', Avena sp. chaff and Avena sativa spikelets, mosses and Linum usitatissimum.

Context 3430, sample 138

Dark grey, moist, crumbly and slightly layered, homogeneous, silt, with amorphous organics, bone and wood fragments common.

This sample contained plant remains which suggested faecal material with several mosses (10 taxa) and quite a lot of hay-meadow taxa. Again, there was a fair amount of Avena chaff and grain, both charred and waterlogged. There was some cereal 'bran' and a charred Vicia faba cotyledon.

Context 3443, sample 145 and 147

Sample 145: Dark, grey-brown, plastic, moist, homogeneous, humic silt. TPS BS.

Sample 147: Dark brown, layered, homogeneous, compressed, herbaceous detritus. TPS.

These samples came from an 11th century floor occupation layer, build-up or levelling make-up. Sample 145 had mainly weeds such as Torilis japonica and Atropa bell-donna. These weed taxa are a slightly unusual assemblage and perhaps represent material deposited on a floor from trampling muddy boots. Sample 147 contained small bark fragments mostly, weeds, including Campanula rotundifolia. Sample 145M contained a few weeds, but not much else. These included Thlaspi arvense, charcoal, wood and bark fragments. There was also some Avena

and Anthemis cotula, both charred and waterlogged, perhaps evidence of cereal processing or the use of oat straw on the floor.

Context 3446, samples 149 and 150

Sample 150: Dark brown, moist-wet, crumbly and brittle, homogeneous, amorphous organic silt with concretions. MT BS.

Sample 149: Black, slightly crumbly, laminated and fibrous amorphous organic. MTPS BS

These samples were from an 11th century floor deposit or dereliction spread. Both sample had quite a large number of taxa - the usual 'urban mixture' with quite a lot of wetland species represented. The wetland taxa brought in, perhaps, on muddy boots, in water or mixed with bedding material such as sedges and rushes include Juncus bufonius. There were, again, waterlogged Avena sp., caryopses and glume bases.

Context 3452, sample 154

Mid grey, plastic-brittle, sandy silt, with small stones. MTPS.

This was an 11th century occupation spread or the dereliction remains of a daub building, with few taxa, mostly consisting of weeds and grassland species such as Linum catharticum and Prunella vulgaris. Wetland species included Oenanthe lachinellii and Alisma sp. There was Avena material in this sample also.

Context 3453, sample 151

This was a spot sample consisting of Quercus sp(p). and Fraxinus excelsior charcoal.

Context 3453, sample 152

Black humic silt. MTPS.

This sample from an 11th century floor did not contain any evidence of building timbers having collapsed on the surface as the excavator thought it might. There was a mixture of grassland and wetland taxa with some hints of heathland (Calluna vulgaris and Erica sp. leaves). The M contained a fairly rich assemblage including several mosses, Avena charred and waterlogged caryopses and chaff, as well as some food remains including apple pip and endocarp and flax seeds, but no bran. The apple fragments could just be the remains of some 11th century person's apple core, thrown onto the floor, as there was no clear evidence of faecal material.

Context 3447, sample 158

Black, somewhat fibrous, slightly heterogeneous, amorphous organic with some small ?natural soil lumps. MTPS BS.

This was an 11th century 'silty spread', possibly a dump or build-up. The M sample contained mostly arable weeds (e.g. Atriplex sp., Chenopodium sp.) also Calluna shoot, Pteridium aquilinum pinnule and some indet. vegetative material. The assemblage was very similar to sample 152, above. These assemblages are difficult to interpret because such a mixture of habitats are represented. It is possible that the arable weeds have become incorporated into the deposits from crop processing activities.

GROUP 6

Context 3106, sample 75

Dark, grey-brown, moist, plastic-crumbly, homogeneous, silty clay with stones of all sizes, limestone, charcoal and bone all present. TPS.

This sample, from a 14th century soil layer, contained a Raphanus raphanistrum pod segment and a variety of charred cereal grains (Hordeum, Avena, Bromus and Triticum spp.) but nothing much else. Presumably only charred material survived in this layer due to aeration and/or drying out of the soil.

Context 3133, sample 87

Dark grey, moist, plastic-crumbly, homogeneous, slightly sandy clay silt, with small stones, charcoal, bone, mortar and tile all present. TPS BS.

The T sample from this 13th century layer was of 3kg but little was found apart from few charred cereal grains and waterlogged fig seeds. There was also some Avena chaff and several arable weed seeds, some of which were charred.

Context 3252, sample 79

Mid/dark grey-brown, moist, crumbly, homogeneous fine sandy silt with charcoal. TPS.

This sample from a 14th century domestic floor around a hearth contained no plant remains.

Context 3266, sample 80

Dark grey-brown, moist, plastic-crumbly, homogeneous, slightly sandy clay silt, with chalk pebbles present and a few concretions. TPS.

This sample from an undated organic layer contained charred Avena grain and chaff and several waterlogged weed seeds. There were also lumps of charred bark with a partly burnt/partly mineralized layer of Avena chaff attached to it.

Context 3223, sample 78

Light-mid grey-brown, dry-moist, crumbly, homogeneous, sandy silt, very small stones present and charcoal common. T BS.

This was a bulk-sieved sample sieved to 300 microns and subsequently treated as a 'test' sample. It came from a deposit of 14th-15th century hearth debris and consisted of charcoal and charred material. It contained muc' charcoal and charred twigs fragments, but few seeds except for four taxa in the flot.

Context 3333, sample 92

This was a spot sample which consisted of charcoal (indet.) with very rotted wood ash, eggshell and mineral sediment which looked like finely divided organic detritus.

Context 3341, sample 185

This sample was not described. There are no sample or laboratory sheets. BS.

This was a 13th century occupation level overlying a very highly fired hearth [3342] used in its later stages for melting lead. The BS (RW) produced a large quantity of Avena grain and chaff (including straw), but very little else. There were a very few charred arable weeds. Perhaps oat straw and chaff was used for the lead smelting fire?

GROUP 7**Context 2322C, sample 90**

Mid grey-brown, moist, crumbly, slightly heterogeneous, slightly sandy clay silt, with small, medium and large stones, bone fragments and tile/brick present. TPS BS.

This T sample from a 16th century pit fill contained very few seeds. There was an unusually large number of Chara oospores. This pit was similar to the "parchment" or steeping pit fills but it was located at the front of the site within a building.

Context 2322, sample 181

This sample was not described. There was no sample sheet. BS.

The washover from this bulk-sieved sample contained several Avena sp. charred grain as well as charred Bromus and Hordeum and a very few 'weed' taxa. There was much charcoal and mammal bone fragments.

Context 2162, sample 70

Light-mid buff, moist, crumbly, homogeneous, silt, with charcoal and ash abundant, bone and eggshell present. TPS

This was a 17th century pit fill with ash but virtually no plant remains, apart from Juncus bufonius in the flot.

Context 1089C, sample 31

Mid grey, crumbly, dry, sandy silt with very small stones. TPS

This sample came from the base of 18th century clay lined pit, the only "parchment" or steaping pit described as having a "peaty" fill on the sample sheet. It contained fungal hyphae in a felt-like mass. There were no other plant remains the deposit being mainly mineral and charcoal.

Context 1089, sample 21

Black, crumbly, dry, homogeneous, humic, sandy silt with arthropod contamination, with tiles and limestone present. MTPS BS.

Only a few plant remains with amorphous organics were recovered from this 18th-19th century pit fill. The M sample contained animal hairs, mostly amorphous organic material with apple endocarp, Chenopodium sp., Carex sp., earthworm egg capsules, bone, stone and brick/tile.

Context 1090B, sample 17

No sediment description for this sample. T.

This sample was sieved out from the sheep bones which dominated it before the T was carried out. Sambucus nigra was the only plant remain present.

GROUP 8**Context 1087, sample 18**

Light-mid grey-brown, moist, crumbly, slightly heterogeneous, silty clayey fine sand, with limestones common and charcoal and mortar present. Minor matrix component mid-grey clay lumps. TPS BS.

This sample contained only Sambucus nigra, together with charcoal, brick/tile, an iron nail, and rootlets.

Context 1085, sample 14

Mid yellow-brown, dry-moist, crumbly, homogeneous, sandy silt, with limestone, mortar and tile common and charcoal present. TPS BS

The only plant represented in this sample was Stachys cf. sylvatica.

Context 1075, sample 8A

Light/mid brown, moist, plastic to crumbly, homogeneous, slightly sandy clay silt, with slight olive mottle, small stones and charcoal present. TPS BS.

There were very few plant remains contained in this T sample, these were mostly weeds and some Linum usitatissimum. There were several iron-panned soil fragments.

Context 1075, sample 11

Mid grey-brown, moist, crumbly, homogeneous, slightly sandy silty clay, with mortar and tile present. TPS.

There were very few plant remains, apart from Avena sp. charred grain in this sample.

Context 1071, samples 1 and 2

Sample 1: Light/mid yellow-brown, dry, crumbly, heterogeneous, fine sand, with minor matrix components of mid grey-brown clay lumps, mid grey brown clay-silt and mid yellow-brown silty sand. T BS.

Sample 2: Dark grey, dry to moist, crumbly, homogeneous, silty fine sand, with very small to medium stones, tile and coal, all present. TPS.

These two Victorian samples, from 1071, had virtually no plant remains.

Unclassified samples

The following samples have been bulk sieved but there is no information about them, i.e. there are no sample forms:

Context 2322, sample 181; context 2069, sample 180; context 1095, sample 182; context 1098, sample 184 and context 1097, sample 183.

They all had virtually no plant remains other than charcoal. These samples mostly came from the 18th century, clay-lined, sheep metapodial-filled, steaping or parchment pits - see Group 7.

Timber Identifications

Dr Allan Hall identified the timbers and charcoal fragments from this site, a summary of the results follows:

The totals of timber identifications were:

3 pine (?scots pine)
7 oak
2 hazel and hazel twigs
1 unidentifiable
1 not identifiable - not wood.

Charcoal identifications:

Sample 103, context 3358: Alnus

Sample 151, context 3453: Quercus and Fraxinus excelsior

Acknowledgments

I am grateful to members of the laboratory for help with the production of this report. Dr Allan Hall supervised the work, checked the identifications, produced the computer analysis system and identified the wood. Laura Chapman processed ten of the pit fill samples.

Bibliography

Brinklow D A (1984) The Archaeology In: O'Connor T P, Selected groups of bones from Skeldergate and Walmgate. The Archaeology of York, 15/1.

Hall A R, Jones A K G and Kenward H K (forthcoming) Environmental evidence from the Colonia: Tanner Row and Rougier Street. The Archaeology of York 14/6.

Kenward H K, Hall A R and Jones A K G (1980) A tested set of techniques for the extraction of plant and animal microfossils from waterlogged archaeological deposits. Science and Archaeology 22, 3-15.

Kenward H K, Engleman C, Robertson A and Large F (1980) Rapid scanning of urban archaeological deposits for insect remains. Circaea 3, 163-72.

LIST OF APPENDICES

Copies of these Appendices are held at the Ancient Monuments Laboratory and on the University of York Vax mainframe computer at the Environmental Archaeology Unit, York.

- Appendix a) Complete list of plant taxa for each sample, arranged in context number order.
- Appendix b) List of ecological/use groups for each sample, arranged in context number order.
- Appendix c) List of the ecological/use groups codes used in the analysis, showing their meanings.

Plant remains from 118-26 Walmgate, York,

YAT SITE CODE: 78-9.8

APPENDICES

LIST OF APPENDICES

- Appendix a) Complete list of plant taxa for each sample, arranged in context number order.
- Appendix b) List of ecological/use groups for each sample, arranged in context number order.
- Appendix c) List of the ecological/use groups codes used in the analysis, showing their meanings.

Appendix a) Complete list of plant taxa for each sample, arranged in context number order.

Site	Context	CQ	Sample	SQ
78-9.8	1017		1	T

Taxon	Score
Gramineae	1
brick/tile	2
charcoal	1
limestone	1
root/rootlet fgts	1
sand	3
stones	2

Site	Context	CQ	Sample	SQ
78-9.8	1071		2	T

Taxon	Score
brick/tile	1
charcoal	2
coal	1
limestone	1
mammal bone	1
root/rootlet fgts	1
sand	1
slag	1
stones	1

Site	Context	CQ	Sample	SQ
78-9.8	1075	A	8	T

Taxon	Score
<i>Urtica dioica</i>	2
<i>Chenopodium</i> sp(p).	1
<i>Capsella bursa-pastoris</i>	1
<i>Potentilla</i> cf. <i>erecta</i>	1
<i>Linum usitatissimum</i>	1
<i>Aethusa cynapium</i>	1
<i>Conium maculatum</i>	1
<i>Anagallis arvensis</i>	1
<i>Hyoscyamus niger</i>	1
<i>Sambucus nigra</i>	1
<i>Carduus/Cirsium</i> sp(p).	1
<i>Juncus bufonius</i>	1
<i>Carex</i> sp(p).	1
charcoal	1
iron pan fgts	3
mammal bone	1
sand	2

Site	Context	CQ	Sample	SQ
78-9.8	1075	C	11	T

Taxon	Score
cf. <i>Avena</i> sp(p).	1
brick/tile	2
burnt mammal bone	1
charcoal	2
fish bone	1
fish scale	1
limestone	1
mammal bone	1
stones	2

Site	Context	CQ	Sample	SQ
78-9.8	1085		14	T

Taxon	Score
<i>Stachys</i> cf. <i>sylvatica</i>	2
brick/tile	1
charcoal	1
fish bone	1
mammal bone	1
mortar	2
sand	1
stones	1

Site	Context	CQ	Sample	SQ
78-9.8	1087		18	T

Taxon	Score
<i>Sambucus nigra</i>	1
brick/tile	2
burnt mammal bone	1
charcoal	2
limestone	1
mammal bone	1
mortar	2
nail	1
root/rootlet fgts	1
stones	1

Site	Context	CQ	Sample	SQ
78-9.8	1089	B	21	M

Taxon	Score
cf. <i>Malus sylvestris</i> (endo)	1
<i>Carex</i> sp(p).	1
bird bone	1
brick/tile	1
burnt mammal bone	1
charcoal	1
earthworm egg caps	1
fish bone	1
hairs	2
limestone	1
metallic slag	1
sand	1
stones	1

Site	Context	CQ	Sample	SQ
78-9.8	1089	B	21	T

Taxon	Score
<i>Atriplex</i> sp(p).	1
<i>Carex</i> sp(p).	1
brick/tile	1
burnt mammal bone	1
chalk	1
coal	1
earthworm egg caps	1
fish bone	1
mammal bone	1
metallic slag	1
mortar	1
snails	1

Site	Context	CQ	Sample	SQ
78-9.8	1089	C	31	T

Taxon	Score
<i>Ranunculus</i> Section <i>Ranunculus</i>	1
brick/tile	1
burnt mammal bone	1
charcoal	1
coal	1
earthworm egg caps	1
fungal hyphae	1
mammal bone	1
mortar	1
root/rootlet fgts	1

Site	Context	CQ	Sample	SQ
------	---------	----	--------	----

78-9.8 1090 B 17 T+

Taxon	Score
Sambucus nigra	1
brick/tile	2
burnt mammal bone	2
charcoal	2
fish bone	1
fish scale	1
fungus hyphae	1
glass	1
mammal bone	4
oyster shell fgts	1
sand	2

Site	Context	CQ	Sample	SQ
78-9.8	1097		183	R

Taxon	Score
Atriplex sp(p).	1
Rubus fruticosus agg.	1
Sambucus nigra	1
Carex sp(p).	1
brick/tile	2
burnt mammal bone	1
charcoal	2
fish scale	1
limestone	1
mammal bone	1
root/rootlet fgts	1
stones	2

Site	Context	CQ	Sample	SQ
78-9.8	2069		180	R

Taxon	Score
brick/tile	1
charcoal	1
eggshell fgts	1
fish bone	1
mammal bone	2
pottery	1
root/rootlet fgts	1
stones	2

Site	Context	CQ	Sample	SQ
78-9.8	2162		70	T

Taxon	Score
Sambucus nigra	1
Juncus bufonius	1
brick/tile	1
burnt mammal bone	1
charcoal	2
eggshell fgts	1
eggshell membrane fgts	1
fish bone	1
limestone	1
mammal bone	1
stones	1

Site	Context	CQ	Sample	SQ
78-9.8	2322	C	90	T

Taxon	Score
Urtica dioica	1
Rumex sp(p). (ch)	1
Sambucus nigra	1
Anthemis cotula (ch)	1
Cerealia indet.	1
Carex sp(p).	1
Chara sp(p).	2
Cu/alloy fgts	1
brick/tile	2
burnt mammal bone	1
charcoal	1
coal	2
fish bone	1
glassy slag	1
mammal bone	2
metallic slag	1
mortar	1
sandstone	1

Site	Context	CQ	Sample	SQ
78-9.8	2322	C	181	W

Taxon	Score
Rubus fruticosus agg.	1
Euphorbia helioscopia	1
Conium maculatum	1
Conium maculatum (ch)	1
Galeopsis Subgenus Galeopsis	1
Sambucus nigra	1
Cerealia indet.	1
Bromus sp(p).	1
Hordeum sp(p).	1
Avena sp(p).	2
Carex sp(p).	1

charcoal	3
fish bone	1
fish scale	1
mammal bone	3

Site	Context	CQ	Sample	SQ
78-9.8	3106		75	T+

Taxon	Score
Raphanus raphanistrum (ch pod segs/fgts)	1
Sambucus nigra	1
Triticum sp(p).	1
Hordeum sp(p).	1
Avena sp(p).	1
brick/tile	2
burnt mammal bone	1
charcoal	3
fish bone	1
limestone	1
mammal bone	2
pottery	1
sand	2
stones	2

Site	Context	CQ	Sample	SQ
78-9.8	3133		87	T+

Taxon	Score
Ficus carica	2
Urtica dioica	1
Rubus fruticosus agg.	1
Aethusa cynapium	1
Conium maculatum	1
Plantago lanceolata (ch)	1
Sambucus nigra	1
Juncus bufonius	1
Cerealia indet.	1
Triticum sp(p).	1
Hordeum sp(p).	1
Avena sp(p).	1
cf. Avena sp(p).	1
cf. Avena sp(p). (spklts/fgts)	1
Avena sp(p). (awn/gl fgts)	1
Carex sp(p).	1
brick/tile	1
burnt mammal bone	1
charcoal	3
eggshell membrane fgts	1
fish bone	1
iron pan fgts	1
limestone	1

mammal bone	1
pottery	1
sand	1

 Site Context CQ Sample SQ
 78-9.8 3223 78 T+

Taxon	Score
Urtica dioica	1
Papaver argemone	1
Reseda luteola	1
Marrubium vulgare	1
Sambucus nigra	1
Juncus bufonius	1
Gramineae (ch)	1
Avena sp(p). (awn/gl fgts)	1
burnt mammal bone	1
charcoal	4
fish bone	1
mammal bone	1
twigs (ch)	1

 Site Context CQ Sample SQ
 78-9.8 3223 78 W

Taxon	Score
Urtica dioica	1
Reseda luteola	1
Potentilla sp(p). (ch)	1
Sambucus nigra	1
Chrysanthemum segetum (ch)	1
Juncus bufonius	1
Gramineae	1
Gramineae (ch)	1
Triticum sp(p). (hexaploid)	1
Avena sp(p).	1
Carex sp(p). (ch)	1
beetles	1
charcoal	3
root/rhizome fgts (ch)	1

 Site Context CQ Sample SQ
 78-9.8 3252 79 T

Taxon	Score
brick/tile	2
burnt mammal bone	1
charcoal	1

mammal bone	1
sand	3
stones	2

Site	Context	CQ	Sample	SQ
78-9.8	3266		80	T

Taxon	Score
Urtica urens	1
Ranunculus Section Ranunculus	1
Thlaspi arvense	1
Raphanus raphanistrum (pod segs/fgts)	1
Potentilla anserina	1
Potentilla cf. erecta	1
Aethusa cynapium	1
Sambucus nigra	1
Sonchus asper	1
Lapsana communis	1
Juncus sp(p).	1
Gramineae (ch)	1
Triticum aestivum-type	1
Avena sp(p).	2
cf. Avena sp(p). (spklts/fgts)	3
Avena sp(p). (awn/gl fgts)	2
Eleocharis palustris sl	1
Carex sp(p).	1
bark fgts (ch)	1
charcoal	3
fish bone	1
limestone	1
root/rootlet fgts	1
sand	1
stones	2

Site	Context	CQ	Sample	SQ
78-9.8	3341		185	RW

Taxon	Score
Corylus avellana	1
Rumex acetosella agg. (ch)	1
Chenopodium album	1
Conium maculatum	1
Bromus sp(p).	1
cf. Triticum sp(p).	1
Avena sp(p).	1
Avena sp(p). (awn/gl fgts)	1
Avena sativa (spklts/fgts)	1
charcoal	1
clinker/ash	1
eggshell fgts	1
fish bone	1
root/rootlet fgts	1

wood fgts 1

Site	Context	CQ	Sample	SQ
78-9.8	3401		121	T

Taxon	Score
charcoal	1
eggshell fgts	1
limestone	1
mammal bone	1
mortar	1
root/rootlet fgts	1
sand	1

Site	Context	CQ	Sample	SQ
78-9.8	3405		124	T+

Taxon	Score
Corylus avellana	1
Corylus avellana (ch)	1
Bilderdykia convolvulus	1
Rumex sp(p). (ch)	1
Chenopodium album	1
Atriplex sp(p). (ch)	1
Agrostemma githago (ch)	1
Silene cf. alba (ch)	1
Rubus/Rosa sp(p). (prickles)	1
cf. Vicia sp(p).	1
Linum catharticum (ch)	1
Euphorbia helioscopia (ch)	1
Calluna vulgaris (ch fls)	1
cf. Calluna vulgaris (ch rt-tw fgts)	1
Calluna vulgaris (lvs)	1
Anthemis cotula (ch)	1
Gramineae	1
Cerealia indet.	1
cf. Poa annua (ch)	1
Bromus sp(p).	1
cf. Secale cereale	1
Hordeum sp(p).	1
Avena sp(p). (spkltts/fgts)	1
Avena sativa	2
Carex sp(p). (ch)	1
brick/tile	1
charcoal	1
coal	1
fish bone	1
glassy slag	1
mammal bone	1
mortar	1

Site	Context	CQ	Sample	SQ
78-9.8	3405		126	T*

Taxon	Score
Polygonum persicaria/lapathifolium (ch)	1
Atriplex sp(p). (ch)	1
Raphanus raphanistrum (ch pod segs/fgts)	1
Cerealia indet. (rachis fgts)	1
Bromus sp(p).	1
Avena sp(p).	1
Avena sp(p). (awn/gl fgts)	1
Avena sativa (spkltts/fgts)	1
charcoal	3
glassy slag	1
leaf ab pads	1
stem fgts (ch)	1

Site	Context	CQ	Sample	SQ
78-9.8	3416		132	T

Taxon	Score
Sambucus nigra	1
Cerealia indet.	1
burnt mammal bone	1
charcoal	1
fish bone	1
iron pan fgts	1
mammal bone	1
sand	1

Site	Context	CQ	Sample	SQ
78-9.8	3421	3	143	T

Taxon	Score
Pteridium aquilinum (pinn fgts)	1
Corylus avellana	1
Quercus sp(p). (b/bs)	1
Urtica dioica	1
Polygonum aviculare agg.	1
Bilderdykia convolvulus	1
Rumex acetosella	1
Chenopodium album	1
Atriplex sp(p).	1
Stellaria media	1
Stellaria graminea	1
Ranunculus Section Ranunculus	1
Ranunculus flammula	1
Brassica sp./Sinapis arvensis (min)	1
Raphanus raphanistrum (pod segs/fgts)	1
Potentilla anserina	1

Potentilla cf. reptans	1
Linum usitatissimum	2
Linum catharticum	1
Viola sp(p).	1
Umbelliferae	1
Oenanthe aquatica	1
Aethusa cynapium	1
Galeopsis Subgenus Galeopsis	1
Prunella vulgaris	2
Hyoscyamus niger	1
Sambucus nigra	1
Valerianella dentata	2
Anthemis cotula	1
Sonchus sp(p).	1
Sonchus asper	1
Juncus bufonius	2
Triticum/Secale ('bran' fgts)	1
Avena sp(p).	2
Avena sp(p). (awn/gl fgts)	1
Avena sativa (spkltts/fgts)	1
Eleocharis palustris sl	2
Carex sp(p).	1
Sphagnum sp(p).	1
Calliargon cuspidatum	1
cf. Brachythecium sp(p).	1
Rhytidiadelphus sp(p).	1
bark fgts	1
charcoal	2
eggshell fgts	1
eggshell membrane fgts	1
fish bone	1
fly puparia	1
mammal bone	1
twig fgts	1
wood fgts	1

Site	Context	CQ	Sample	SQ
78-9.8	3430		138	T

Taxon	Score
Pteridium aquilinum (rachis fgts)	1
Quercus sp(p). (lf fgts)	1
Urtica dioica	1
Urtica urens	1
Polygonum aviculare agg.	1
Polygonum persicaria	1
Bilderdykia convolvulus	1
Chenopodium album	2
Chenopodium/Atriplex sp(p). (min)	1
Atriplex sp(p).	2
Stellaria media	2
Agrostemma githago (sf)	1
Silene vulgaris	1
Ranunculus Section Ranunculus	1
Papaver sp(p).	1
Thlaspi arvense	1

Brassica sp(p).	1
Brassica rapa	1
Raphanus raphanistrum (pod segs/fgts)	1
Filipendula ulmaria	2
Potentilla anserina	1
Potentilla cf. erecta	1
Aphanes arvensis	1
Leguminosae (fls/pet)	1
Linum usitatissimum	2
Linum catharticum	2
Euphorbia helioscopia	1
Viola sp(p).	2
Lythrum salicaria	1
Umbelliferae	1
Anthriscus sylvestris	1
Oenanthe lachenalii	2
Oenanthe aquatica	1
Aethusa cynapium	1
Conium maculatum	1
Apium graveolens	1
Petroselinum segetum	1
Calluna vulgaris (sht fgts)	1
Galeopsis Subgenus Ladanum	1
Galeopsis Subgenus Galeopsis	1
Stachys cf. sylvatica	1
Prunella vulgaris	2
Hyoscyamus niger	1
Rhinanthus sp(p).	1
Sambucus nigra	1
Valerianella dentata	1
Campanula cf. rotundifolia	1
Anthemis cotula	1
Anthemis cotula (ch)	1
Achillea sp(p).	1
Arctium sp(p).	1
Carduus/Cirsium sp(p).	1
Picris hieracioides	1
Sonchus asper	1
Lapsana communis	1
Alisma sp(p).	1
Juncus inflexus/effusus/conglomeratus	1
Juncus gerardi	1
Juncus bufonius	2
Juncus bulbosus	1
Gramineae	1
Triticum sp(p). (hexaploid)	1
Triticum/Secale ('bran' fgts)	1
Hordeum sp(p).	1
Avena sp(p). (w/l spkltts/fgts)	1
Avena sp(p).	1
Avena sp(p). (awn/gl fgts)	1
Danthonia decumbens	1
Cyperaceae	1
Cyperaceae (pap lef)	1
Eleocharis palustris sl	1
Eleocharis palustris sl (ch)	1
Cladium mariscus	1
Carex sp(p).	2
Leucobryum glaucum	1
Ulota sp(p).	1

Antitrichia curtipendula	1
Neckera complanata	1
Thuidium tamariscinum	1
Homalothecium sericeum/lutescens	1
Hypnum cupressiforme	1
Rhytidiadelphus squarrosus	1
Pleurozium schreberi	1
Hylocomium splendens	1
Daphnia (ephippia)	1
bark fgts	1
charcoal	1
fly puparia	1
mammal bone	1
stones	1
wood fgts	1

 Site Context CQ Sample SQ
 78-9.8 3432 137 M

Taxon	Score
Corylus avellana	1
Urtica dioica	1
Polygonum aviculare agg.	1
Polygonum persicaria	1
Bilderdykia convolvulus	1
Rumex sp(p).	1
Rumex acetosella	1
Chenopodium album	1
Atriplex sp(p).	2
Agrostemma githago	1
Ranunculus Section Ranunculus	2
Ranunculus flammula	1
Papaver argemone	1
Thlaspi arvense	1
Brassica sp(p).	1
Brassica rapa	1
Brassica sp./Sinapis arvensis	1
Raphanus raphanistrum (pod segs/fgts)	1
Filipendula ulmaria	1
Potentilla cf. erecta	1
Linum usitatissimum	1
Viola sp(p).	1
Anthriscus sylvestris	1
Scandix pecten-veneris	1
Aethusa cynapium	1
Apium graveolens	1
Daucus carota	1
Anagallis arvensis	1
Myosotis sp(p).	1
Galeopsis Subgenus Galeopsis	1
Prunella vulgaris	1
Sambucus nigra	1
Anthemis cotula	1
Centaurea sp(p).	1
Sonchus asper	1
Juncus sp(p).	1

Juncus bufonius	1
Gramineae	1
Avena sp(p). (w/l)	1
Avena sp(p).	2
Avena sp(p). (spkltts/fgts)	1
Avena sp(p). (awn/gl fgts)	1
Danthonia decumbens	1
Scirpus setaceus	1
Eleocharis palustris sl	2
Carex sp(p).	2
Sphagnum sp(p). (shts)	1
Homalothecium sericeum/lutescens	1
Rhytidiadelphus squarrosus	1
Hylocomium splendens	1
bark fgts	1
charcoal	2
earthworm egg caps	1
fish bone	1
fly puparia	2
limestone	1
stem fgts	1
twig fgts	1
wood fgts	3

Site	Context	CQ	Sample	SQ
78-9.8	3433		144	T

Taxon	Score
Equisetum sp(p). (nodal sheath fgts)	1
Salix sp(p). (tw fgts)	1
Salix sp(p). (lf fgts)	1
Salix sp(p). (b)	1
Betula sp(p). (b/bs)	1
Corylus avellana	1
Urtica dioica	1
Urtica urens	2
Polygonum aviculare agg.	1
Polygonum persicaria	1
Rumex sp(p).	1
Rumex acetosella	1
Chenopodium album	1
Atriplex sp(p).	2
Stellaria media	2
Spergula arvensis	1
Agrostemma githago	1
Agrostemma githago (sf)	1
Ranunculus Section Ranunculus	2
Ranunculus sceleratus	1
Papaver somniferum	1
Brassica sp(p).	1
Brassica rapa	1
Brassica sp./Sinapis arvensis	1
Rubus fruticosus agg.	1
Rubus caesius	1
Potentilla palustris	1
Potentilla cf. erecta	1

Malus sp(p).	1
Malus sylvestris (endo)	1
Prunus spinosa	1
Prunus spinosa (inc meso)	1
Vicia faba (min hila)	1
Pisum sp(p). (min)	1
Linum usitatissimum	2
Bryonia cretica ssp. dioica	1
Umbelliferae	1
Anthriscus sylvestris	1
Aethusa cynapium	1
Apium graveolens	1
Heracleum sphondylium	1
Erica tetralix (lvs)	2
Calluna vulgaris (fls)	2
Calluna vulgaris (sht fgts)	1
Calluna vulgaris (lvs)	1
Vaccinium sp(p).	1
Galium sp(p).	1
Galeopsis Subgenus Ladanum	1
Galeopsis Subgenus Galeopsis	1
Lamium Section Lamiopsis	1
Prunella vulgaris	1
Sambucus nigra	1
Valerianella dentata	1
Anthemis cotula	2
Anthemis cotula (ch)	1
Senecio sp(p).	1
Hypochoeris sp(p).	1
Leontodon sp(p).	1
Sonchus asper	1
Sonchus oleraceus	1
Sonchus arvensis	1
Lapsana communis	1
Allium sp(p). (lef)	1
Juncus sp(p).	1
Juncus sp(p). (epid fgts)	1
Gramineae	1
Gramineae (ch)	1
cf. Poa annua	1
cf. Bromus sp(p). (w/l)	1
Triticum/Secale ('bran' fgts)	2
Avena sp(p). (w/l)	3
Avena sp(p). ('bran' fgts)	1
Avena sp(p). (awn/gl fgts)	1
Cyperaceae (pap lef)	1
cf. Cladium mariscus (epid fgts)	1
Carex sp(p).	1
Sphagnum sp(p). (shts)	1
Polytrichum formosum	1
Leucobryum glaucum	1
Ulota sp(p).	1
Neckera complanata	1
Scorpidium scorpioides	1
Calliergon cf. giganteum	1
Calliergon cuspidatum	1
Isoetecium myurum	1
Hypnum cupressiforme	1
Hylocomium splendens	1

bark fgts	3
charcoal	1
earthworm egg caps	1
eggshell membrane fgts	1
faecal concretions	1
fish bone	1
fly puparia	3
fruit epidermis	1
mammal bone	1
moss	1
twig fgts	1
wood fgts	1

Site	Context	CQ	Sample	SQ
78-9.8	3443		145	M

Taxon	Score
Polygonum aviculare agg.	1
Polygonum persicaria	1
Rumex sp(p).	1
Chenopodium album	1
Stellaria graminea	1
Ranunculus Section Ranunculus	1
Ranunculus flammula	1
Thlaspi arvense	1
Brassica sp./Sinapis arvensis	1
Raphanus raphanistrum (pod segs/fgts)	1
Potentilla cf. erecta	1
Torilis japonica	1
Galeopsis Subgenus Galeopsis	1
Atropa bella-donna	1
Sambucus nigra	1
Valerianella dentata	1
Anthemis cotula	1
Anthemis cotula (ch)	1
Carduus/Cirsium sp(p).	1
Allium sp(p). (lef)	1
Juncus bufonius	1
Gramineae	1
Avena sp(p). (w/l)	1
Avena sp(p).	1
Avena sp(p). (awn/gl fgts)	1
Cyperaceae (pap lef)	1
Eleocharis palustris sl	2
Eleocharis palustris sl (ch)	1
Carex sp(p).	1
?daub	1
bark fgts	1
charcoal	1
fly puparia	1
mammal bone	1
stones	1
wood fgts	1

Site	Context	CQ	Sample	SQ
78-9.8	3443		145	T

Taxon	Score
Urtica dioica	1
Urtica urens	1
Polygonum aviculare agg.	1
Polygonum persicaria	1
Rumex acetosella	1
Chenopodium album	1
Atriplex sp(p).	1
Ranunculus Section Ranunculus	1
Ranunculus sardous	1
Descurainia sophia	1
Brassica sp./Sinapis arvensis	1
Raphanus raphanistrum (pod segs/fgts)	1
Potentilla cf. erecta	1
Linum usitatissimum	1
Viola sp(p).	1
cf. Berula erecta	1
Oenanthe sp(p).	1
Torilis japonica	1
Galeopsis Subgenus Galeopsis	1
Plantago major	1
Sambucus nigra	1
Carduus/Cirsium sp(p).	1
Juncus bufonius	2
Avena sp(p).	1
cf. Avena sp(p). (spkltts/fgts)	1
Eleocharis palustris sl	1
Carex sp(p).	1
bark fgts	2
charcoal	1
fish bone	1
fish scale	1
fly puparia	1
glassy slag	1
mammal bone	1
mammal tooth	1
pottery	1
wood fgts	1

Site	Context	CQ	Sample	SQ
78-9.8	3446		149	M

Taxon	Score
Populus sp(p). (b/bs)	1
Urtica dioica	1
Urtica urens	1
Chenopodium album	2
Atriplex sp(p).	2
Arenaria serpyllifolia	1
Stellaria media	1
Agrostemma githago (sf)	1
Ranunculus Section Ranunculus	1

Ranunculus flammula	1
Papaver argemone	1
Brassica sp(p).	1
Raphanus raphanistrum (pod segs/fgts)	1
Potentilla cf. erecta	1
Aphanes microcarpa	1
Linum usitatissimum	1
Aethusa cynapium	1
Anagallis arvensis	1
Galium sp(p).	1
Galeopsis Subgenus Galeopsis	1
Mentha sp(p).	1
Sambucus nigra	1
Valerianella dentata	1
Anthemis cotula	1
Carduus/Cirsium sp(p).	1
Sonchus asper	1
Lapsana communis	1
Juncus bufonius	2
Gramineae	1
Gramineae (lef)	1
Cerealia indet.	1
Triticum/Secale ('bran' fgts)	1
Avena sp(p). (w/l)	1
Avena sp(p). ('bran' fgts)	1
Avena sp(p). (w/l spkltts/fgts)	1
Avena sp(p).	1
Avena sp(p). (awn/gl fgts)	1
Eleocharis palustris sl	2
Carex sp(p).	1
Neckera complanata	1
bark fgts	2
charcoal	1
earthworm egg caps	1
fly puparia	1
mammal bone	1
stones	1
wood fgts	3

Site	Context	CQ	Sample	SQ
78-9.8	3446		150	M

Taxon	Score
Urtica dioica	2
Polygonum aviculare	2
Polygonum persicaria	2
Polygonum lapathifolium	1
Bilderdykia convolvulus	1
Rumex sp(p).	1
Rumex acetosella	1
Chenopodium album	2
Atriplex sp(p).	2
Stellaria media	1
Agrostemma githago	1
Ranunculus Section Ranunculus	2
Ranunculus flammula	1

Papaver argemone	1
Brassica sp(p).	2
Brassica rapa	2
Raphanus raphanistrum (pod segs/fgts)	2
Potentilla sp(p).	1
Aphanes microcarpa	2
Linum usitatissimum	1
Linum catharticum	1
Euphorbia helioscopia	1
Umbelliferae	1
Aethusa cynapium	2
Anagallis arvensis	2
Prunella vulgaris	1
Mentha sp(p).	1
Sambucus nigra	1
Valerianella dentata	2
Anthemis cotula	2
Sonchus asper	2
Lapsana communis	2
Juncus bufonius	3
Juncus acutiflorus	2
Cerealia indet.	2
cf. Avena sp(p).	2
Scirpus setaceus	1
Eleocharis palustris sl	2
Schoenus nigricans	1
Carex sp(p).	2

Site Context CQ Sample SQ
78-9.8 3447 158 M

Taxon	Score
Pteridium aquilinum (pinn fgts)	1
Corylus avellana	1
Urtica dioica	1
Urtica urens	1
Polygonum aviculare agg.	1
Polygonum persicaria	2
Polygonum lapathifolium	1
Bilderdykia convolvulus	1
Rumex sp(p).	1
Rumex acetosella	1
Chenopodium album	1
Atriplex sp(p).	2
Stellaria media	1
Agrostemma githago	1
Ranunculus Section Ranunculus	2
Ranunculus flammula	1
Brassica sp(p).	2
Brassica rapa	1
Raphanus raphanistrum (pod segs/fgts)	1
Potentilla anserina	1
Potentilla cf. erecta	1
Potentilla cf. reptans	1
Prunus spinosa	1
Linum usitatissimum	2

Viola sp(p).	1
Oenanthe lachenalii	1
Aethusa cynapium	1
Daucus carota	1
Calluna vulgaris (sht fgts)	1
Anagallis arvensis	1
Galium sp(p).	1
Galeopsis Subgenus Galeopsis	1
Prunella vulgaris	1
Hyoscyamus niger	1
Sambucus nigra	1
Valerianella dentata	1
Anthemis cotula	1
Arctium sp(p).	1
Carduus/Cirsium sp(p).	1
Leontodon sp(p).	1
Sonchus asper	1
Lapsana communis	1
Juncus bufonius	2
Juncus articulatus	1
Bromus sp(p). (w/l)	1
Avena sp(p). (w/l spkltts/fgts)	1
Avena sp(p).	2
Danthonia decumbens	1
Eleocharis palustris sl	1
Carex sp(p).	1
Antitrichia curtispindula	1
Neckera complanata	1
Calliargon cf. giganteum	1
Calliargon cuspidatum	1
Isothecium myosuroides	1
Hypnum cupressiforme	1
Rhytidiadelphus sp(p).	1
charcoal	1
fish bone	1
fly puparia	1

Site Context CQ Sample SQ
78-9.8 3450 167 1

Taxon	Score
Ficus carica	2
Urtica dioica	2
Urtica urens	2
Polygonum aviculare	1
Polygonum persicaria	2
Polygonum lapathifolium	1
Rumex sp(p).	1
Chenopodium album	2
Atriplex sp(p).	2
Stellaria media	2
Agrostemma githago	2
Ranunculus Section Ranunculus	1
Brassica sp(p).	2
Raphanus raphanistrum (pod segs/fgts)	2
Filipendula ulmaria	1

Rosa sp(p).	1
Malus sylvestris	2
Crataegus cf. monogyna	1
Prunus spinosa	1
Linum usitatissimum	2
Anethum graveolens	2
Apium graveolens	1
Torilis japonica	1
Galeopsis tetrahit	1
Mentha sp(p).	1
Sambucus nigra	2
Anthemis cotula	3
Carduus/Cirsium sp(p).	1
Picris hieracioides	1
Lapsana communis	2
Gramineae	3
Cladium mariscus	2
Carex sp(p).	2

Site	Context	CQ	Sample	SQ
78-9.8	3450		167	M

Taxon	Score
Pteridium aquilinum (rachis fgts)	1
Pteridium aquilinum (pinn fgts)	1
Corylus avellana	1
Quercus sp(p). (b/bs)	1
Cannabis sativa	1
Urtica dioica	1
Urtica urens	1
Polygonum aviculare	1
Bilderdykia convolvulus	1
Rumex sp(p).	1
Chenopodium album	1
Atriplex sp(p).	2
Stellaria media	1
Agrostemma githago (sf)	2
Ranunculus flammula	1
Thalictrum flavum	1
Brassica sp(p).	2
Brassica rapa	1
Raphanus raphanistrum (pod segs/fgts)	1
Potentilla palustris	1
Malus sp(p).	2
Malus sylvestris (endo)	2
Prunus spinosa	1
Linum usitatissimum	1
Oenanthe aquatica	1
Anethum graveolens	1
Apium graveolens	1
Calluna vulgaris (fls)	1
Galeopsis Subgenus Galeopsis	1
Prunella vulgaris	1
cf. Satureja hortensis	1
Pedicularis palustris	1
Valerianella dentata	1

Anthemis cotula	2
Achillea sp(p).	1
Carduus/Cirsium sp(p).	1
Centaurea sp(p).	1
Hypochoeris sp(p).	1
Leontodon sp(p).	1
Sonchus asper	1
Lapsana communis	1
Allium porrum (lef)	1
Gramineae (lef)	2
Cerealia indet. (culm fgts)	2
Bromus sp(p). (w/l)	1
Triticum/Secale ('bran' fgts)	2
Avena sp(p). (w/l)	1
Avena sp(p). ('bran' fgts)	2
Avena sp(p). (w/l spkltts/fgts)	1
Avena sp(p). (min)	2
Cladium mariscus	1
Carex sp(p).	1
Scorpidium scorpioides	2
Calliargon cf. giganteum	2
Calliargon cuspidatum	2
Rhytidiadelphus squarrosus	1
'limpets'	1
faecal concretions	2
fish bone	1
fly puparia	2
mammal bone	1

Site	Context	CQ	Sample	SQ
78-9.8	3450		167	SPT

Taxon	Score
Quercus sp(p). (b/bs)	1
Urtica dioica	1
Polygonum aviculare	1
Bilderdykia convolvulus	1
Rumex sp(p).	1
Rumex acetosella	1
Chenopodium album	1
Atriplex sp(p).	1
Stellaria/Cerastium sp(p).	1
Agrostemma githago (sf)	1
Ranunculus cf. sardous	1
Brassica rapa	1
Brassica sp./Sinapis arvensis	1
Raphanus raphanistrum (pod segs/fgts)	2
Potentilla palustris	1
Malus sp(p).	1
Malus sylvestris (endo)	1
Prunus spinosa (thorns)	1
Linum usitatissimum	1
Menyanthes trifoliata	1
Marrubium vulgare	1
Prunella vulgaris	1
Satureja hortensis	1

Anthemis cotula	2
Triticum/Secale ('bran' fgts)	1
Eleocharis palustris sl	1
Eleocharis cf. multicaulis	1
Cladium mariscus	2
Carex sp(p).	2
cf. Anomobryum filiforme	1
Drepanocladus sp(p).	1
Scorpidium scorpioides	2
Calliargon giganteum	3
Calliargon cuspidatum	1
Trichuris (ova)	1
beetles	1
charcoal	1
faecal concretions	1
fly puparia	2
mammal bone	1
stem fgts	1

Site Context CQ Sample SQ
78-9.8 3452 154 M

Taxon	Score
Corylus avellana	1
Polygonum aviculare	1
Polygonum lapathifolium	1
Chenopodium album	1
Atriplex sp(p).	1
Stellaria media	1
Ranunculus Section Ranunculus	1
Potentilla cf. erecta	1
Linum usitatissimum	1
Linum catharticum	1
Umbelliferae	1
Oenanthe lachenalii	1
Daucus carota	1
Galeopsis Subgenus Galeopsis	1
Prunella vulgaris	1
Alisma sp(p).	1
Juncus bufonius	2
Eleocharis palustris sl	1
Carex sp(p).	1
charcoal	2
fly puparia	1
mammal bone	1
sand	1
stones	1
wood fgts	1

Site Context CQ Sample SQ
78-9.8 3452 154 T

Taxon	Score
Urtica dioica	1
Urtica urens	1
Chenopodium album	1
Atriplex sp(p).	1
Stellaria media	1
Ranunculus Subgenus Batrachium	1
Brassica sp(p).	1
Brassica rapa	1
Raphanus raphanistrum (pod segs/fgts)	1
Viola sp(p).	1
Aethusa cynapium	1
Conium maculatum	1
Sambucus nigra	1
Sonchus asper	1
Lapsana communis	1
Alisma sp(p).	1
Juncus inflexus/effusus/conglomeratus	1
Juncus bufonius	1
cf. Avena sp(p). (spklts/fgts)	1
Eleocharis palustris sl	1
Carex sp(p).	1
bark fgts	1
beetles	1
burnt mammal bone	1
charcoal	1
fly puparia	1
mammal bone	1
wood fgts	1

Site Context CQ Sample SQ
78-9.8 3453 152 M

Taxon	Score
Filicales (pinn fgts)	1
Corylus avellana	1
Urtica dioica	1
Urtica urens	1
Polygonum aviculare agg.	2
Polygonum persicaria	1
Polygonum lapathifolium	1
Bilderdykia convolvulus	1
Rumex sp(p).	1
Rumex acetosella	1
Chenopodium ficifolium	1
Chenopodium album	2
Atriplex sp(p).	2
Stellaria media	1
Stellaria graminea	1
Agrostemma githago	1
Ranunculus Section Ranunculus	1
Ranunculus flammula	1
Brassica sp(p).	1
Brassica sp./Sinapis arvensis	1
Raphanus raphanistrum (s)	1
Raphanus raphanistrum (pod segs/fgts)	1

Potentilla palustris	1
Potentilla cf. erecta	1
Malus sylvestris (endo)	1
Linum usitatissimum	2
Viola sp(p).	1
Anthriscus sylvestris	1
Oenanthe cf. fistulosa	1
Aethusa cynapium	1
Erica sp(p). (lvs)	1
Calluna vulgaris (fls)	1
Calluna vulgaris (sht fgts)	1
Myosotis sp(p).	1
Galeopsis tetrahit	1
Prunella vulgaris	2
Sambucus nigra	1
Valerianella dentata	1
Anthemis cotula	2
Carduus/Cirsium sp(p).	1
Leontodon sp(p).	1
Sonchus asper	1
Sonchus arvensis	1
Lapsana communis	1
Juncus bufonius	2
Gramineae	1
Cerealia indet. (culm fgts)	1
Bromus sp(p). (w/l)	1
cf. Triticum sp(p).	1
Avena sp(p). (w/l)	1
Avena sp(p). (w/l spklts/fgts)	1
Avena sp(p).	1
Avena sp(p). (spklts/fgts)	1
Avena sp(p). (awn/gl fgts)	1
Scirpus lacustris sl	1
Scirpus setaceus	1
Eleocharis palustris sl	2
Carex sp(p).	1
Dicranum sp(p).	1
Leucobryum glaucum	1
Ulota sp(p).	1
Calliargon cf. giganteum	1
Calliargon cuspidatum	1
Hypnum cupressiforme	1
Rhytidiadelphus cf. triquetrus	1
bark fgts	1
charcoal	1
earthworm egg caps	1
fish bone	1
fly puparia	1
limestone	1
mammal bone	1
wood fgts	2

Site	Context	CQ	Sample	SQ
78-9.8	3455		147	T

Taxon

Score

Polygonum aviculare	1
Polygonum persicaria	1
Rumex acetosella	1
Chenopodium album	2
Atriplex sp(p).	1
Brassica sp(p).	1
Brassica rapa	1
Brassica sp./Sinapis arvensis	1
Raphanus raphanistrum (s)	2
Raphanus raphanistrum (pod segs/fgts)	1
Malus sylvestris (endo)	1
Aethusa cynapium	1
Daucus carota	1
Galium sp(p).	1
Sambucus nigra	1
Campanula cf. rotundifolia	1
Anthemis cotula	1
Carduus/Cirsium sp(p).	1
Leontodon sp(p).	1
Sonchus asper	2
Juncus bufonius	1
Cerealia indet.	1
Avena sp(p). (awn/gl fgts)	1
Eleocharis palustris sl	1
Calliergon cuspidatum	1
bark fgts	3
brick/tile	1
burnt mammal bone	1
charcoal	1
fish bone	1
flint	1
metallic slag	1
wood fgts	1

Site	Context	CQ	Sample	SQ
78-9.8	3459		157	M

Taxon	Score
Salix sp(p). (b)	1
Quercus sp(p).	1
Urtica dioica	2
Urtica urens	2
Polygonum aviculare agg.	1
Polygonum aviculare	2
Polygonum hydropiper	1
Polygonum persicaria	1
Polygonum lapathifolium	2
Bilderdykia convolvulus	1
Rumex sp(p).	1
Chenopodium album	3
Atriplex sp(p).	2
Stellaria media	2
Cerastium sp(p).	2
Scleranthus annuus	1
Agrostemma githago	2
Agrostemma githago (sf)	2

<i>Caltha palustris</i>	1
<i>Ranunculus</i> Section <i>Ranunculus</i>	1
<i>Ranunculus sardous</i>	1
<i>Ranunculus flammula</i>	2
<i>Papaver somniferum</i>	1
<i>Papaver argemone</i>	1
<i>Thlaspi arvense</i>	1
<i>Brassica</i> sp(p).	1
<i>Brassica rapa</i>	2
<i>Brassica</i> cf. <i>nigra</i>	1
<i>Raphanus raphanistrum</i> (pod segs/fgts)	1
<i>Filipendula ulmaria</i>	1
<i>Rubus idaeus</i>	1
<i>Rubus fruticosus</i> agg.	1
<i>Potentilla</i> sp(p).	2
<i>Potentilla palustris</i>	1
<i>Potentilla anserina</i>	1
<i>Potentilla</i> cf. <i>erecta</i>	1
<i>Malus</i> sp(p).	1
<i>Malus sylvestris</i>	2
<i>Malus sylvestris</i> (endo)	1
<i>Sorbus aucuparia</i>	1
<i>Vicia faba</i> (hila)	1
<i>Pisum sativum</i> (hila)	1
<i>Linum usitatissimum</i>	2
<i>Linum catharticum</i>	1
Umbelliferae	2
<i>Anthriscus sylvestris</i>	1
<i>Oenanthe</i> sp(p).	1
<i>Oenanthe aquatica</i>	1
<i>Aethusa cynapium</i>	2
<i>Anethum graveolens</i>	2
<i>Apium graveolens</i>	2
<i>Daucus carota</i>	1
<i>Calluna vulgaris</i> (fls)	1
<i>Calluna vulgaris</i> (lvs)	1
<i>Vaccinium</i> sp(p).	2
<i>Galeopsis</i> sp(p).	1
<i>Galeopsis</i> Subgenus <i>Galeopsis</i>	1
<i>Stachys</i> sp(p).	1
<i>Prunella vulgaris</i>	1
<i>Satureja hortensis</i>	1
cf. <i>Satureja hortensis</i>	2
<i>Mentha</i> sp(p).	1
<i>Rhinanthus</i> sp(p).	1
<i>Valerianella dentata</i>	1
<i>Bellis perennis</i>	1
<i>Anthemis cotula</i>	3
<i>Matricaria perforata</i>	1
<i>Carduus/Cirsium</i> sp(p).	1
<i>Centaurea</i> sp(p).	1
<i>Centaurea</i> sp(p). (inv fgts)	1
<i>Leontodon</i> sp(p).	1
<i>Picris hieracioides</i>	1
<i>Sonchus asper</i>	1
<i>Sonchus arvensis</i>	2
<i>Lapsana communis</i>	2
<i>Luzula</i> sp(p).	1
Gramineae	1
Gramineae (ch)	1

Cerealia indet. (culm fgts)	1
cf. Glyceria sp(p).	1
Triticum/Secale ('bran' fgts)	3
Avena sp(p). ('bran' fgts)	3
Avena sp(p). (w/l spkltts/fgts)	2
Avena sp(p). (awn/gl fgts)	1
Avena sp(p). (min)	1
Danthonia decumbens	1
Eleocharis palustris sl	1
Carex sp(p).	2
Leucobryum glaucum	1
Neckera complanata	1
Calliargon cuspidatum	1
Rhytidiadelphus squarrosus	1
bark fgts	1
earthworm egg caps	1
eggshell membrane fgts	1
faecal concretions	2
fish bone	1
fly puparia	3
mammal bone	1
stones	1
twig fgts	1
wood fgts	1

Site	Context	CQ	Sample	SQ
78-9.8	3459		157	SPT

Taxon	Score
Quercus sp(p). (lf fgts)	1
Urtica urens	1
Polygonum aviculare agg.	1
Polygonum persicaria	1
Bilderdykia convolvulus	1
Rumex sp(p).	1
Chenopodium album	1
Atriplex sp(p).	1
Agrostemma githago	2
Raphanus raphanistrum (pod segs/fgts)	1
Rubus fruticosus agg.	1
Malus sp(p).	1
Malus sylvestris (endo)	1
Prunus spinosa	1
Leguminosae (cal/fls)	1
Linum usitatissimum	2
Vaccinium sp(p).	1
Prunella vulgaris	1
Anthemis cotula	1
Bromus sp(p). (w/l)	2
Triticum/Secale ('bran' fgts)	1
Avena sp(p). (w/l)	2
Scirpus lacustris sl	1
Carex sp(p).	1
Neckera complanata	1
Calliargon cuspidatum	1
Hypnum cupressiforme	1

bark fgts	1
eggshell membrane fgts	1
faecal concretions	2
fly puparia	2
mammal bone	1
stones	1
wood fgts	2

Site	Context	CQ	Sample	SQ
78-9.8	3463		170	M

Taxon	Score
<i>Urtica dioica</i>	2
<i>Urtica urens</i>	2
<i>Chenopodium album</i>	2
<i>Silene alba</i>	1
<i>Ranunculus sceleratus</i>	2
<i>Thalictrum flavum</i>	1
<i>Brassica</i> sp(p).	2
<i>Aethusa cynapium</i>	2
<i>Anagallis arvensis</i>	1
<i>Sambucus nigra</i>	2
<i>Scirpus setaceus</i>	2
<i>Eleocharis palustris</i> sl	1
<i>Carex</i> sp(p).	3

Site	Context	CQ	Sample	SQ
78-9.8	3463		170	T

Taxon	Score
<i>Urtica urens</i>	1
<i>Rubus fruticosus</i> agg.	1
<i>Aethusa cynapium</i>	1
<i>Hyoscyamus niger</i>	1
<i>Sambucus nigra</i>	1
<i>Carex</i> sp(p).	2
charcoal	2
earthworm egg caps	1
limestone	1
mammal bone	2
sand	2
stones	2

Site	Context	CQ	Sample	SQ
78-9.8	3468		168	M

Taxon	Score
<i>Corylus avellana</i>	1

Urtica dioica	1
Urtica urens	1
Polygonum aviculare agg.	1
Polygonum hydropiper	1
Polygonum persicaria	1
Polygonum lapathifolium	1
Bilderdykia convolvulus	1
Rumex sp(p).	1
Rumex acetosella	1
Chenopodium album	1
Atriplex sp(p).	3
Stellaria media	1
Stellaria graminea	1
Agrostemma githago	1
Agrostemma githago (sf)	1
Ranunculus Section Ranunculus	2
Ranunculus flammula	1
Brassica sp(p).	1
Brassica rapa	2
Potentilla palustris	1
Linum usitatissimum	1
Linum catharticum	1
Viola sp(p).	1
Lythrum salicaria	1
Epilobium sp(p).	1
Scandix pecten-veneris	1
Oenanthe lachenalii	1
Oenanthe aquatica	1
Aethusa cynapium	1
cf. Anethum graveolens	1
Anagallis arvensis	1
Galeopsis Subgenus Galeopsis	1
Prunella vulgaris	1
Lycopus europaeus	1
Hyoscyamus niger	1
Valerianella dentata	1
Anthemis cotula	1
Sonchus asper	1
Sonchus arvensis	1
Juncus bufonius	1
Gramineae	1
Cerealia indet.	1
Bromus sp(p). (w/l)	1
Avena sp(p). (w/l)	2
Avena sp(p). (w/l spkltts/fgts)	1
Avena sp(p). (awn/gl fgts)	2
Danthonia decumbens	2
Eleocharis palustris sl	1
Carex sp(p).	1
Hypnum cupressiforme	1
Hylocomium splendens	1
Daphnia (ephippia)	1
bark fgts	1
charcoal	1
earthworm egg caps	1
fish bone	1
fly puparia	1
mammal bone	1
twig fgts	1

Site	Context	CQ	Sample	SQ
78-9.8	3468		168	T

Taxon	Score
<i>Corylus avellana</i>	1
<i>Cannabis sativa</i>	1
<i>Urtica urens</i>	2
<i>Polygonum aviculare</i>	2
<i>Polygonum persicaria</i>	1
<i>Polygonum lapathifolium</i>	2
<i>Bilderdykia convolvulus</i>	1
<i>Rumex</i> sp(p).	1
<i>Chenopodium album</i>	2
<i>Atriplex</i> sp(p).	3
<i>Stellaria media</i>	1
<i>Agrostemma githago</i>	1
<i>Agrostemma githago</i> (sf)	1
<i>Ranunculus</i> Section <i>Ranunculus</i>	2
<i>Ranunculus flammula</i>	2
<i>Brassica rapa</i>	1
<i>Brassica</i> sp./ <i>Sinapis arvensis</i>	1
<i>Raphanus raphanistrum</i> (s)	1
<i>Raphanus raphanistrum</i> (pod segs/fgts)	1
<i>Filipendula ulmaria</i>	1
<i>Linum usitatissimum</i>	1
<i>Linum catharticum</i>	1
<i>Viola</i> sp(p).	1
<i>Lythrum salicaria</i>	2
cf. <i>Oenanthe</i> sp(p).	1
<i>Aethusa cynapium</i>	1
<i>Calluna vulgaris</i> (fls)	1
<i>Galeopsis</i> Subgenus <i>Galeopsis</i>	1
<i>Lamium</i> Section <i>Lamiopsis</i>	1
<i>Prunella vulgaris</i>	1
<i>Satureja hortensis</i>	1
<i>Hyoscyamus niger</i>	1
<i>Pedicularis palustris</i>	1
<i>Rhinanthus</i> sp(p).	1
<i>Plantago major</i>	1
<i>Sambucus nigra</i>	1
<i>Valerianella dentata</i>	1
<i>Anthemis cotula</i>	2
<i>Anthemis cotula</i> (ch)	1
<i>Senecio</i> sp(p).	1
<i>Arctium</i> sp(p).	1
<i>Carduus/Cirsium</i> sp(p).	1
<i>Hypochoeris</i> sp(p).	1
<i>Leontodon</i> sp(p).	1
<i>Picris hieracioides</i>	1
<i>Sonchus oleraceus</i>	1
<i>Sonchus arvensis</i>	1
<i>Lapsana communis</i>	1
<i>Allium porrum</i> (lef)	1
<i>Juncus</i> sp(p).	1
<i>Juncus bufonius</i>	1

Gramineae	1
Bromus sp(p). (w/l)	1
Avena sp(p). (w/l)	1
Avena sp(p). (w/l spkltts/fgts)	2
Avena sp(p). (awn/gl fgts)	1
Danthonia decumbens	1
Cyperaceae (pap lef)	1
Eleocharis palustris sl	2
Cladium mariscus	1
Carex sp(p).	1
Antitrichia curtipendula	1
Thuidium tamariscinum	1
Calliergon cuspidatum	1
Hypnum cupressiforme	1
Hylocomium splendens	1
Daphnia (ephippia)	1
bark fgts	1
charcoal	1
earthworm egg caps	1
eggshell fgts	1
fish bone	1
fly puparia	2
limestone	1
mammal bone	1
twig fgts	1
wood fgts	3

Site Context CQ Sample SQ
78-9.8 3468 169 M

Taxon	Score
Filicales (pinn fgts)	1
Salix sp(p). (tw fgts)	1
Salix sp(p). (b)	1
Corylus avellana	1
Quercus sp(p). (b/bs)	1
Cannabis sativa	1
Urtica dioica	1
Urtica urens	2
Polygonum aviculare agg.	2
Polygonum aviculare	2
Polygonum hydropiper	2
Polygonum persicaria	2
Polygonum lapathifolium	1
Bilderdykia convolvulus	1
Rumex sp(p).	1
Rumex cf. conglomeratus	1
Chenopodium Section Pseudoblitum	1
Chenopodium album	2
Atriplex sp(p).	3
Stellaria media	1
Cerastium sp(p).	2
Cerastium sp(p).	1
Spergula arvensis	2
Agrostemma githago	1
Agrostemma githago (sf)	1

Ranunculus Section Ranunculus	1
Ranunculus sardous	1
Ranunculus flammula	1
Papaver somniferum	1
Papaver argemone	1
Capsella bursa-pastoris	1
Brassica sp(p).	1
Brassica rapa	1
Raphanus raphanistrum (pod segs/fgts)	1
Filipendula ulmaria	1
Agrimonia eupatoria	1
Potentilla sp(p).	2
Potentilla palustris	1
Potentilla anserina	1
Potentilla cf. erecta	1
Aphanes arvensis	1
Malus sp(p).	1
Leguminosae (cal/fls)	1
Linum usitatissimum	2
Linum catharticum	1
Viola sp(p).	1
cf. Lythrum sp(p).	1
Lythrum salicaria	2
Oenanthe lachenalii	1
Aethusa cynapium	1
Conium maculatum	1
Apium graveolens	1
Daucus carota	1
Calluna vulgaris (fls)	1
Calluna vulgaris (sht fgts)	1
Calluna vulgaris (lvs)	1
Primula cf. veris	1
Anagallis arvensis	1
Galium sp(p).	2
Myosotis sp(p).	1
Galeopsis sp(p).	1
Galeopsis Subgenus Galeopsis	1
Stachys sp(p).	2
Prunella vulgaris	2
Mentha sp(p).	1
Rhinanthus sp(p).	1
Plantago major	1
Sambucus nigra	1
Valerianella dentata	1
Campanula rotundifolia	1
Campanula cf. rotundifolia	1
Anthemis cotula	3
Achillea sp(p).	1
Matricaria perforata	1
Senecio sp(p).	1
Arctium sp(p).	1
Carduus/Cirsium sp(p).	1
Centaurea sp(p).	1
Centaurea sp(p). (inv fgts)	1
Leontodon sp(p).	1
Picris hieracioides	1
Sonchus asper	2
Sonchus arvensis	1
Lapsana communis	1
Crepis sp(p).	2

Iris pseudacorus	1
Juncus inflexus/effusus/conglomeratus	2
Juncus bufonius	2
Juncus articulatus	1
Luzula sp(p).	1
Gramineae	1
Gramineae	1
Cerealia indet. (culm fgts)	2
Cerealia indet.	2
Bromus sp(p). (w/l)	1
Triticum/Secale ('bran' fgts)	1
Avena sp(p). (w/l)	1
Avena sp(p). (w/l spkltts/fgts)	1
cf. Avena sp(p).	1
Danthonia decumbens	1
Cyperaceae (pap lef)	1
Scirpus setaceus	1
Eleocharis palustris sl	2
Carex sp(p).	2
Dicranum sp(p).	1
Leucobryum glaucum	1
Calliergon cuspidatum	1
Hypnum cupressiforme	1
Rhytidiadelphus squarrosus	1
Hylocomium splendens	1
Daphnia (ephippia)	1
bark fgts	2
burnt mammal bone	1
charcoal	1
flask-shaped galls	1
fly puparia	2
stones	1
twig fgts	2
wood fgts	2

 Site Context CQ Sample SQ
 78-9.8 3474 171 T

Taxon	Score
Cannabis sativa	1
Urtica dioica	4
Chenopodium Section Pseudoblitum	2
Stellaria media	1
Silene cf. alba	1
Thlaspi arvense	1
Rubus fruticosus agg.	1
Potentilla sp(p).	1
Aethusa cynapium	1
Anagallis arvensis	1
Hyoscyamus niger	1
Anthemis cotula	1
Juncus sp(p).	1
Hordeum sp(p).	1
Carex sp(p).	2

Site	Context	CQ	Sample	SQ
78-9.8	3475		163	M

Taxon	Score
Salix sp(p). (b)	1
Cannabis sativa	2
Urtica dioica	2
Urtica urens	3
Polygonum aviculare	2
Polygonum hydropiper	1
Polygonum persicaria	1
Polygonum lapathifolium	2
Bilderdykia convolvulus	2
Rumex sp(p).	2
Rumex acetosella	2
Chenopodium album	3
Atriplex sp(p).	3
Stellaria media	2
Cerastium sp(p).	2
Spergula arvensis	2
Agrostemma githago	1
Caltha palustris	1
Ranunculus Section Ranunculus	2
Ranunculus flammula	2
Thalictrum cf. flavum	1
Brassica sp(p).	2
Raphanus raphanistrum (pod segs/fgts)	2
Filipendula ulmaria	2
Potentilla sp(p).	2
Potentilla palustris	2
Aphanes microcarpa	2
Linum usitatissimum	2
Linum catharticum	2
Viola sp(p).	1
Aethusa cynapium	1
Torilis japonica	1
Daucus carota	1
Calluna vulgaris (s)	1
Calluna vulgaris (lvs)	1
Anagallis arvensis	2
Myosotis sp(p).	1
Galeopsis Subgenus Galeopsis	1
Prunella vulgaris	2
Hyoscyamus niger	2
Valerianella dentata	1
Anthemis cotula	3
Arctium sp(p).	1
Carduus/Cirsium sp(p).	1
Sonchus sp(p).	1
Sonchus asper	1
Sonchus arvensis	1
Lapsana communis	2
Juncus inflexus/effusus/conglomeratus	3
Juncus bufonius	3
Luzula sp(p).	1
Gramineae	2
Cerealia indet.	1

cf. Bromus sp(p).	1
Triticum aestivo-compactum	1
cf. Secale cereale	2
Hordeum vulgare	2
cf. Avena sp(p).	2
Danthonia decumbens	1
Cyperaceae	2
Scirpus setaceus	1
Eleocharis palustris sl	1
Cladium mariscus	2
Carex sp(p).	3
Sphagnum sp(p).	1
Leucobryum glaucum	1
Calliergon sp(p).	1

Site	Context	CQ	Sample	SQ
78-9.8	3476		175	M

Taxon	Score
Salix sp(p). (b)	1
Betula sp(p).	1
Urtica dioica	3
Urtica urens	2
Polygonum aviculare	3
Polygonum persicaria	2
Bilderdykia convolvulus	2
Rumex sp(p).	2
Chenopodium Section Pseudoblitum	2
Chenopodium album	2
Stellaria sp(p).	2
Spergula arvensis	2
Ranunculus Section Ranunculus	2
Brassica sp(p).	1
Potentilla sp(p).	2
Viola sp(p).	2
Aethusa cynapium	3
Apium graveolens	1
Anagallis arvensis	1
Mentha sp(p).	1
Hyoscyamus niger	2
Sambucus nigra	2
Anthemis cotula	2
Carduus/Cirsium sp(p).	2
Sonchus asper	2
Crepis sp(p).	1
Juncus bufonius	2
Gramineae	2
Avena sp(p).	1
Scirpus setaceus	2
Eleocharis palustris sl	1
Carex sp(p).	2

Site	Context	CQ	Sample	SQ
------	---------	----	--------	----

Taxon	Score
<i>Urtica dioica</i>	2
<i>Urtica urens</i>	1
<i>Polygonum aviculare</i>	2
<i>Polygonum persicaria</i>	1
<i>Rumex</i> sp(p).	1
<i>Chenopodium</i> Section <i>Pseudoblitum</i>	1
<i>Chenopodium murale</i>	1
<i>Chenopodium album</i>	1
<i>Atriplex</i> sp(p).	1
<i>Stellaria media</i>	1
<i>Papaver argemone</i>	1
<i>Thlaspi arvense</i>	1
<i>Rubus fruticosus</i> agg.	1
<i>Potentilla</i> sp(p).	1
<i>Viola</i> sp(p).	1
<i>Aethusa cynapium</i>	2
<i>Anagallis arvensis</i>	1
<i>Menyanthes trifoliata</i>	1
<i>Hyoscyamus niger</i>	1
<i>Solanum nigrum</i>	1
<i>Sambucus nigra</i>	1
<i>Carduus/Cirsium</i> sp(p).	1
<i>Sonchus asper</i>	1
<i>Alisma</i> sp(p).	1
<i>Carex</i> sp(p).	1
bark fgts	1
beetles	1
brick/tile	1
burnt mammal bone	1
charcoal	1
earthworm egg caps	1
limestone	1
mammal bone	1
sandstone	1
stones	2
wood fgts	1

Site	Context	CQ	Sample	SQ
78-9.8	3477		172	M

Taxon	Score
<i>Urtica dioica</i>	2
<i>Urtica urens</i>	3
<i>Polygonum aviculare</i>	2
<i>Polygonum hydropiper</i>	1
<i>Polygonum persicaria</i>	2
<i>Polygonum lapathifolium</i>	2
<i>Bilderdykia convolvulus</i>	1
<i>Rumex acetosella</i> agg.	2
<i>Chenopodium</i> Section <i>Pseudoblitum</i>	2
<i>Chenopodium album</i>	2
<i>Atriplex</i> sp(p).	2

Stellaria media	3
Cerastium sp(p).	2
Agrostemma githago (sf)	2
Ranunculus Section Ranunculus	2
Ranunculus flammula	2
Papaver somniferum	1
Papaver argemone	1
Brassica sp(p).	2
Raphanus raphanistrum (pod segs/fgts)	2
Rubus fruticosus agg.	2
Potentilla palustris	1
Aphanes microcarpa	1
Malus sp(p).	2
Prunus spinosa	2
Linum usitatissimum	1
Viola sp(p).	1
Anthriscus sylvestris	2
Apium graveolens	2
cf. Daucus carota	2
Anagallis arvensis	2
Lamium purpureum	1
Prunella vulgaris	2
Satureja hortensis	3
Plantago major	1
Sambucus nigra	1
Anthemis cotula	3
Senecio sp(p).	1
Sonchus sp(p).	1
Sonchus asper	1
Lapsana communis	2
Crepis sp(p).	1
Gramineae	2
cf. Avena sp(p).	1
Scirpus setaceus	1
Eleocharis palustris sl	1
Carex sp(p).	2
Sphagnum sp(p).	1

Site	Context	CQ	Sample	SQ
78-9.8	3477		174	M

Taxon	Score
Humulus lupulus	1
Urtica dioica	2
Urtica urens	3
Polygonum aviculare agg.	3
Polygonum hydropiper	1
Polygonum persicaria	1
Bilderdykia convolvulus	2
Rumex sp(p).	2
Rumex acetosella	1
Chenopodium ficifolium	1
Chenopodium album	3
Atriplex sp(p).	3
Stellaria media	3
Spergula arvensis	2

Agrostemma githago (sf)	2
Ranunculus Section Ranunculus	2
Ranunculus sardous	2
Ranunculus flammula	1
Papaver somniferum	2
Papaver argemone	2
Brassica sp(p).	2
Raphanus raphanistrum (pod segs/fgts)	2
Rubus idaeus	1
Rubus fruticosus agg.	1
Potentilla palustris	1
Malus sylvestris (endo)	1
Prunus spinosa	2
Vicia faba	2
Linum usitatissimum	2
Umbelliferae	1
Aethusa cynapium	1
Apium graveolens	1
Vaccinium sp(p).	2
Anagallis arvensis	1
Lamium purpureum	1
Prunella vulgaris	1
Rhinanthus sp(p).	1
Sambucus nigra	1
Anthemis cotula	3
Sonchus oleraceus	1
Sonchus arvensis	2
Lapsana communis	1
Crepis sp(p).	1
Juncus bufonius	1
Juncus articulatus	2
Gramineae	1
Scirpus setaceus	1
Eleocharis palustris sl	1
Carex sp(p).	2

Appendix b) List of ecological/use groups for each sample, arranged in context number order.

Context	Sample	1/T	Number of taxa	

	Group	Number of taxa	%taxa	AIV

Unclassified	UNCL	1	100	0
--------------	------	---	-----	---

Context	Sample	2/T	Number of taxa	

no identifiable plant remains				

Context	Sample	8/T	Number of taxa	

	Group	Number of taxa	%taxa	AIV

Uses	FOOS	2	15	6
	FIBR	1	8	3
	FOOO	1	8	3

Vegetation	ARTE	3	23	8
	CHEN	4	31	8
	QUFA	2	15	6
	RHPR	2	15	6
	ALNE	1	8	4
	EPIL	1	8	4
	SECA	2	15	4
	ISNA	1	8	3
	MOAR	2	15	3
	PLAN	1	8	2
	FEBR	1	8	1
	NACA	1	8	1
	QUER	1	8	1

Unclassified	UNCL	3	23	0
--------------	------	---	----	---

Context 1075 Sample 11/T Number of taxa 1

Group	Number of taxa	%taxa	AIV
-------	----------------	-------	-----

Unclassified

UNCL	1	100	0
------	---	-----	---

Context 1085 Sample 14/T Number of taxa 1

Group	Number of taxa	%taxa	AIV
-------	----------------	-------	-----

Vegetation

ARTE	1	100	2
EPIL	1	100	2
QUFA	1	100	2

Context 1087 Sample 18/T Number of taxa 1

Group	Number of taxa	%taxa	AIV
-------	----------------	-------	-----

Uses

FOOS	1	100	3
------	---	-----	---

Vegetation

QUFA	1	100	2
RHPR	1	100	2

Context 1089 Sample 21/M Number of taxa 2

Group	Number of taxa	%taxa	AIV
-------	----------------	-------	-----

Uses

FOOS	1	50	1
------	---	----	---

Unclassified

UNCL	1	50	0
------	---	----	---

Context 1089 Sample 21/T Number of taxa 2

	Group	Number of taxa	%taxa	AIV
Vegetation				
	BIDE	1	50	2
	CAKI	1	50	2
	CHEN	1	50	2
Unclassified				
	UNCL	1	50	0

Context 1089 Sample 31/T Number of taxa 1

	Group	Number of taxa	%taxa	AIV
Vegetation				
	FEBR	1	100	2
	MOAR	1	100	2
	ARTE	1	100	1
	CHEN	1	100	1
	PHRA	1	100	1
	QUFA	1	100	1
	SECA	1	100	1

Context 1090 Sample 17/T+ Number of taxa 1

	Group	Number of taxa	%taxa	AIV
Uses				
	FOOS	1	100	3
Vegetation				
	QUFA	1	100	2
	RHPR	1	100	2

Context 1097 Sample 183/R Number of taxa 4

	Group	Number of taxa	%taxa	AIV
Uses				
	FOOS	2	50	6
Vegetation				
	QUFA	2	50	4
	RHPR	2	50	4
	ARTE	1	25	2
	BIDE	1	25	2
	CAKI	1	25	2
	CHEN	1	25	2
	NACA	1	25	2
Unclassified				
	UNCL	1	25	0

Context 2069 Sample 180/R Number of taxa

no identifiable plant remains

Context 2162 Sample 70/T Number of taxa 2

	Group	Number of taxa	%taxa	AIV
Uses				
	FOOS	1	50	3
Vegetation				
	ISNA	1	50	3
	QUFA	1	50	2
	RHPR	1	50	2

Context 2322 Sample 90/T Number of taxa 7

	Group	Number of taxa	%taxa	AIV
Uses				
	FOOS	1	14	3
Vegetation				
	CHAR	1	14	6

QUFA	2	29	4
RHPR	2	29	4
ALNE	1	14	2
ARTE	1	14	2
CHEN	1	14	2
EPIL	1	14	2
SECA	1	14	2

Unclassified

UNCL	3	43	0
------	---	----	---

Context 2322 Sample 181/W Number of taxa 11

Group	Number of taxa	%taxa	AIV
-------	-------------------	-------	-----

Uses

FOOS	3	27	9
------	---	----	---

Vegetation

ARTE	4	36	8
CHEN	2	18	5
MOAR	2	18	4
QUFA	2	18	4
RHPR	2	18	4
SECA	2	18	4
EPIL	1	9	2
NACA	1	9	2

Unclassified

UNCL	4	36	0
------	---	----	---

Context 3106 Sample 75/T+ Number of taxa 5

Group	Number of taxa	%taxa	AIV
-------	-------------------	-------	-----

Uses

FOOS	3	60	9
------	---	----	---

Vegetation

SECA	1	20	3
CHEN	1	20	2
QUFA	1	20	2
RHPR	1	20	2

Unclassified

UNCL	1	20	0
------	---	----	---

Context 3133 Sample 87/T+ Number of taxa 16

	Group	Number of taxa	%taxa	AIV
Uses				
	FOOS	5	31	18
Vegetation				
	ARTE	3	19	6
	QUFA	3	19	6
	RHPR	3	19	6
	MOAR	2	13	4
	ISNA	1	6	3
	ALNE	1	6	2
	CHEN	1	6	2
	EPIL	1	6	2
	FEBR	1	6	2
	NACA	1	6	2
	SECA	1	6	2
Unclassified				
	UNCL	6	38	0

Context 3223 Sample 78/T+ Number of taxa 8

	Group	Number of taxa	%taxa	AIV
Uses				
	DYES	1	13	3
	FOOS	1	13	3
Vegetation				
	ARTE	3	38	8
	QUFA	2	25	4
	RHPR	2	25	4
	ISNA	1	13	3
	SECA	1	13	3
	ALNE	1	13	2
	CHEN	1	13	2
	EPIL	1	13	2
Ecology				
	CALC	1	13	2
Unclassified				
	UNCL	2	25	0

Context 3223 Sample 78/W Number of taxa 11

	Group	Number of taxa	%taxa	AIV

Uses				
	FOOS	2	18	6
	DYES	1	9	3
Vegetation				
	ARTE	2	18	5
	QUFA	2	18	4
	RHPR	2	18	4
	ISNA	1	9	3
	SECA	1	9	3
	ALNE	1	9	2
	EPIL	1	9	2
Ecology				
	CALC	1	9	2
	FUGE	1	9	2
Unclassified				
	UNCL	5	45	0

Context 3252 Sample 79/T Number of taxa

no identifiable plant remains

Context 3266 Sample 80/T Number of taxa 18

	Group	Number of taxa	%taxa	AIV

Uses				
	FOOS	2	11	6
Vegetation				
	CHEN	7	39	14
	SECA	6	33	12
	MOAR	4	22	7
	RHPR	2	11	4
	ARTE	2	11	3
	FEBR	2	11	3
	PHRA	2	11	3
	QUFA	2	11	3
	PLAN	1	6	2
	NACA	1	6	1
	QUER	1	6	1
Unclassified				

UNCL	6	33	0
------	---	----	---

Context 3341 Sample 185/RW Number of taxa 9

	Group	Number of taxa	%taxa	AIV
Uses				
	FOOS	3	33	7
Vegetation				
	CHEN	2	22	5
	QUFA	1	11	3
	ARTE	1	11	2
	EPIL	1	11	2
	MOAR	1	11	2
	NACA	1	11	2
	PLAN	1	11	2
	SESC	1	11	2
Unclassified				
	UNCL	3	33	0

Context 3401 Sample 121/T Number of taxa

no identifiable plant remains

Context 3405 Sample 124/T+ Number of taxa 25

	Group	Number of taxa	%taxa	AIV
Uses				
	FOOS	5	20	16
Vegetation				
	CHEN	7	28	14
	SECA	6	24	11
	NACA	3	12	7
	QUFA	2	8	6
	OXSP	3	12	5
	MOAR	2	8	3
	BIDE	1	4	2
	CAKI	1	4	2
	FEBR	1	4	2
	SCCA	1	4	2
	ARTE	1	4	1
	PLAN	1	4	1

	SESL	1	4	1
Unclassified	UNCL	8	32	0
Context 3405 Sample 126/T* Number of taxa 8				
	Group	Number of taxa	%taxa	AIV

Uses	FOOS	1	13	3
Vegetation	CHEN	3	38	6
	BIDE	2	25	4
	SECA	1	13	3
	CAKI	1	13	2
Unclassified	UNCL	4	50	0

Context 3416 Sample 132/T Number of taxa 2				
	Group	Number of taxa	%taxa	AIV

Uses	FOOS	1	50	3
Vegetation	QUFA	1	50	2
	RHPR	1	50	2
Unclassified	UNCL	1	50	0

Context 3421 Sample 143/T Number of taxa 42				
	Group	Number of taxa	%taxa	AIV

Uses	FOOS	5	12	18
	FIBR	1	2	6
	FOOO	1	2	6

	USEF	1	2	2
	WOOD	1	2	1
Vegetation				
	CHEN	13	31	26
	SECA	10	24	24
	MOAR	8	19	19
	PLAN	4	10	11
	QUFA	6	14	11
	ARTE	4	10	7
	PHRA	3	7	7
	EPIL	3	7	6
	ISNA	1	2	6
	NACA	3	7	6
	RHPR	3	7	6
	BIDE	2	5	4
	FEBR	2	5	4
	SCCA	2	5	4
	QUER	2	5	3
	ALNE	1	2	2
	CAKI	1	2	2
	LITT	1	2	2
	POTA	1	2	2
	SESC	1	2	2
	VAPI	1	2	2
	SESL	1	2	1
Mosses				
	BOGS	1	2	3
	FENS	1	2	2
	GRAS	1	2	2
	MARS	1	2	2
	UNCL	2	5	0
Unclassified				
	UNCL	7	17	0

Context 3430 Sample 138/T Number of taxa 84

Group	Number of taxa	%taxa	AIV
-------	----------------	-------	-----

Uses

FOOS	6	7	21
FOOO	2	2	7
FIBR	1	1	6
USEF	2	2	5
FOOF	1	1	3
WOOD	1	1	1

Vegetation

CHEN	21	25	52
SECA	17	20	38
MOAR	16	19	37

ARTE	13	15	26
PHRA	8	10	19
FEBR	6	7	12
QUFA	6	7	11
BIDE	3	4	10
EPIL	5	6	9
NACA	5	6	9
PLAN	3	4	9
RHPR	4	5	8
ISNA	1	1	6
BULB	1	1	4
CAKI	1	1	4
OXSP	2	2	4
QUER	3	4	4
SCCA	1	1	4
ASTE	1	1	3
SESC	2	2	3
TRGE	2	2	3
ALNE	1	1	2
POTA	1	1	2
SESL	1	1	2
VAPI	1	1	2

Mosses

LIGN	7	8	14
HEMO	5	6	11
SLIT	5	6	10
WOOF	5	6	10
OLIT	4	5	8
GRAS	2	2	4
SOIL	2	2	4
BOGS	1	1	2
DUNS	1	1	2

Ecology

CALC	2	2	4
FUGE	1	1	2

Unclassified

UNCL	17	20	0
------	----	----	---

Context 3432 Sample 137/M Number of taxa 50

Group	Number of taxa	%taxa	AIV
-------	-------------------	-------	-----

Uses

FOOS	5	10	13
FOOO	2	4	4
FIBR	1	2	3
FOOF	1	2	3

Vegetation

CHEN	18	36	40
------	----	----	----

SECA	13	26	29
MOAR	10	20	24
ARTE	7	14	14
QUFA	5	10	11
FEBR	3	6	7
PLAN	3	6	7
BIDE	2	4	6
EPIL	3	6	6
ISNA	2	4	6
PHRA	2	4	6
NACA	3	6	5
CAKI	1	2	4
RHPR	2	4	4
ALNE	1	2	2
LITT	1	2	2
SCCA	1	2	2
SESC	1	2	2
QUER	1	2	1
TRGE	1	2	1

Mosses

GRAS	2	4	4
HEMO	2	4	4
BOGS	1	2	3
DUNS	1	2	2
LIGN	1	2	2
OLIT	1	2	2
SLIT	1	2	2
SOIL	1	2	2
WOOF	1	2	2

Ecology

CALC	1	2	2
------	---	---	---

Unclassified

UNCL	13	26	0
------	----	----	---

Context 3433 Sample 144/T Number of taxa 87

Group	Number of taxa	%taxa	AIV
-------	----------------	-------	-----

Uses

FOOS	16	18	46
FOOO	3	3	10
FIBR	1	1	6
FOOF	2	2	6
WOOD	4	5	6
HERB	1	1	1
USEF	1	1	1

Vegetation

CHEN	23	26	57
SECA	17	20	41

ARTE	11	13	23
NACA	6	7	17
QUFA	9	10	17
MOAR	7	8	15
OXSP	4	5	14
BIDE	4	5	13
RHPR	7	8	12
EPIL	4	5	8
PLAN	4	5	8
CAKI	2	2	6
FEBR	2	2	5
ALNE	2	2	4
PHRA	2	2	3
SCCA	1	1	2
SESC	1	1	2
QUER	1	1	1

Mosses

LIGN	5	6	10
WOOF	5	6	10
BOGS	4	5	8
HEMO	4	5	8
SLIT	4	5	8
FENS	3	3	5
MARS	3	3	5
GRAS	2	2	4
OLIT	2	2	4
SOIL	1	1	2

Ecology

FUGE	1	1	3
CALC	1	1	2

Unclassified

UNCL	18	21	0
------	----	----	---

Context 3443 Sample 145/M Number of taxa 29

Group	Number of taxa	%taxa	AIV
-------	----------------	-------	-----

Uses

FOOS	2	7	4
HERB	1	3	1

Vegetation

CHEN	9	31	18
SECA	8	28	17
MOAR	7	24	15
PHRA	3	10	7
ARTE	3	10	5
EPIL	2	7	5
QUFA	3	10	5
FEBR	2	7	3

	ISNA	1	3	3
	NACA	2	7	3
	PLAN	1	3	3
	BIDE	1	3	2
	LITT	1	3	2
	RHPR	1	3	2
	SCCA	1	3	2
	QUER	1	3	1
Ecology				
	CALC	1	3	2
Unclassified				
	UNCL	9	31	0

Context 3443 Sample 145/T Number of taxa 27

	Group	Number of taxa	%taxa	AIV
Uses				
	FOOS	2	7	6
	FIBR	1	4	3
	FOOO	1	4	3
Vegetation				
	CHEN	12	44	25
	SECA	5	19	10
	ARTE	5	19	9
	MOAR	5	19	9
	ISNA	2	7	8
	PLAN	3	11	8
	EPIL	3	11	6
	QUFA	3	11	5
	BIDE	2	7	4
	PHRA	3	11	4
	RHPR	2	7	4
	FEBR	2	7	3
	NACA	2	7	3
	ALNE	1	4	2
	CAKI	1	4	2
	SESC	1	4	2
	POTA	1	4	1
	QUER	1	4	1
Unclassified				
	UNCL	7	26	0

Context 3446 Sample 149/M Number of taxa 40

	Group	Number of taxa	%taxa	AIV

Uses				
	FOOS	4	10	10
	FIBR	1	3	3
	FOOO	1	3	3
	WOOD	1	3	1
Vegetation				
	CHEN	14	35	33
	SECA	14	35	30
	MOAR	4	10	9
	ARTE	4	10	7
	BIDE	2	5	6
	ISNA	1	3	6
	RHPR	3	8	6
	FEBR	3	8	5
	PHRA	2	5	5
	QUFA	3	8	5
	SESC	2	5	5
	CAKI	1	3	4
	EPIL	2	5	4
	ALNE	1	3	2
	LITT	1	3	2
	SCCA	1	3	2
	NACA	1	3	1
	QUER	1	3	1
Mosses				
	LIGN	1	3	2
	SLIT	1	3	2
	WOOF	1	3	2
Unclassified				
	UNCL	12	30	0

Context 3446 Sample 150/M Number of taxa 40

	Group	Number of taxa	%taxa	AIV

Uses				
	FOOS	2	5	6
	FOOO	2	5	5
	FIBR	1	3	3
Vegetation				
	CHEN	18	45	63
	SECA	15	38	54
	MOAR	6	15	18

ARTE	4	10	14
BIDE	4	10	12
ISNA	2	5	12
SCCA	4	10	11
PLAN	3	8	10
RHPR	3	8	10
QUFA	3	8	8
EPIL	2	5	6
FEBR	2	5	6
PHRA	2	5	6
SESC	2	5	6
ALNE	1	3	4
CAKI	1	3	4
LITT	1	3	2
NACA	1	3	2
SESL	1	3	1

Ecology

CALC	1	3	2
------	---	---	---

Unclassified

UNCL	8	20	0
------	---	----	---

Context 3447 Sample 158/M Number of taxa 57

Group	Number of taxa	%taxa	AIV
-------	----------------	-------	-----

Uses

FOOS	5	9	16
FOOO	2	4	7
FIBR	1	2	6
USEF	1	2	2

Vegetation

CHEN	19	33	45
SECA	13	23	29
MOAR	10	18	20
ARTE	8	14	16
BIDE	4	7	12
NACA	5	9	10
QUFA	5	9	10
PLAN	4	7	9
RHPR	5	9	9
EPIL	4	7	8
FEBR	3	5	7
ISNA	1	2	6
PHRA	3	5	6
CAKI	1	2	4
QUER	2	4	3
ALNE	1	2	2
BULB	1	2	2
LITT	1	2	2
OXSP	1	2	2

	SCCA	1	2	2
	SESC	1	2	2
	VAPI	1	2	2
	TRGE	1	2	1
Mosses				
	LIGN	4	7	8
	OLIT	2	4	4
	SLIT	2	4	4
	WOOF	2	4	4
	FENS	2	4	3
	MARS	2	4	3
	GRAS	1	2	2
	HEMO	1	2	2
	SOIL	1	2	2
	BOGS	1	2	1
	UNCL	1	2	0
Ecology				
	FUGE	1	2	2
Unclassified				
	UNCL	10	18	0

Context 3450 Sample 167/1 Number of taxa 33

	Group	Number of taxa	%taxa	AIV
Uses				
	FOOS	8	24	35
	FOOF	2	6	9
	FIBR	1	3	6
	FOOO	1	3	6
	USEF	1	3	6
Vegetation				
	CHEN	12	36	45
	SECA	8	24	31
	ARTE	7	21	17
	QUFA	7	21	16
	RHPR	5	15	15
	BIDE	4	12	14
	MOAR	5	15	11
	PHRA	2	6	7
	EPIL	2	6	6
	ALNE	1	3	4
	CAKI	1	3	4
	FEBR	2	6	4
	PLAN	1	3	3
Ecology				
	CALC	1	3	2

Unclassified

UNCL	7	21	0
------	---	----	---

Context 3450 Sample 167/M Number of taxa 56

Group	Number of taxa	%taxa	AIV
-------	-------------------	-------	-----

Uses

FOOS	9	16	31
FOOF	3	5	7
FOOO	3	5	7
USEF	3	5	7
FIBR	2	4	6
WOOD	1	2	1

Vegetation

CHEN	13	23	32
SECA	10	18	28
MOAR	5	9	11
QUFA	5	9	11
RHPR	5	9	9
ARTE	4	7	8
NACA	3	5	7
BIDE	2	4	6
SCCA	3	5	6
PHRA	2	4	5
PLAN	2	4	5
QUER	3	5	5
CAKI	1	2	4
EPIL	2	4	4
VAPI	2	4	4
ALNE	1	2	2
LITT	1	2	2
OXSP	1	2	2
POTA	1	2	2

Mosses

FENS	3	5	10
MARS	3	5	10
BOGS	2	4	6
GRAS	2	4	6
HEMO	1	2	2

Unclassified

UNCL	14	25	0
------	----	----	---

Context 3450 Sample 167/SPT Number of taxa 34

	Group	Number of taxa	%taxa	AIV
Uses				
	FOOS	4	12	10
	USEF	1	3	6
	FOOO	2	6	4
	FIBR	1	3	3
	FOOF	1	3	3
	WOOD	2	6	2
Vegetation				
	CHEN	9	26	23
	SECA	6	18	18
	PHRA	3	9	10
	ARTE	3	9	7
	PLAN	3	9	7
	QUFA	4	12	7
	EPIL	2	6	4
	MOAR	2	6	4
	RHPR	2	6	4
	SCCA	2	6	4
	ALNE	1	3	2
	BIDE	1	3	2
	CAKI	1	3	2
	NACA	1	3	2
	OXSP	2	6	2
	SESC	1	3	2
	ISNA	1	3	1
	QUER	1	3	1
Mosses				
	FENS	3	9	12
	MARS	3	9	12
	BOGS	2	6	10
	GRAS	1	3	2
	SLIT	1	3	1
	UNCL	1	3	0
Unclassified				
	UNCL	4	12	0

Context 3452 Sample 154/M Number of taxa 19

	Group	Number of taxa	%taxa	AIV
Uses				
	FOOS	3	16	7
	FIBR	1	5	3
	FOOO	1	5	3

Vegetation

CHEN	7	37	14
MOAR	6	32	11
PHRA	4	21	8
FEBR	4	21	7
SECA	4	21	7
BIDE	3	16	6
ISNA	1	5	6
ARTE	3	16	5
PLAN	2	11	5
QUFA	2	11	4
BULB	1	5	2
CAKI	1	5	2
EPIL	1	5	2
SCCA	1	5	2
NACA	1	5	1
QUER	1	5	1
SESL	1	5	1
TRGE	1	5	1

Unclassified

UNCL	2	11	0
------	---	----	---

Context 3452 Sample 154/T Number of taxa 21

Group	Number of taxa	%taxa	AIV
-------	----------------	-------	-----

Uses

FOOS	1	5	3
FOOO	1	5	1

Vegetation

CHEN	9	43	21
SECA	5	24	11
ARTE	4	19	8
MOAR	3	14	6
RHPR	3	14	6
PHRA	2	10	5
BIDE	2	10	4
EPIL	2	10	4
ISNA	2	10	4
QUFA	2	10	4
POTA	1	5	3
ALNE	1	5	2
CAKI	1	5	2
MOCA	1	5	1

Unclassified

UNCL	4	19	0
------	---	----	---

Context 3453 Sample 152/M Number of taxa 65

	Group	Number of taxa	%taxa	AIV
--	-------	-------------------	-------	-----

Uses

FOOS	5	8	16
FIBR	1	2	6
FOOO	1	2	6

Vegetation

CHEN	20	31	50
SECA	14	22	35
MOAR	8	12	18
BIDE	5	8	12
PLAN	3	5	12
NACA	5	8	11
QUFA	5	8	10
ARTE	5	8	9
ISNA	2	3	9
PHRA	4	6	9
CAKI	2	3	6
EPIL	3	5	6
RHPR	3	5	6
OXSP	2	3	4
SCCA	2	3	4
FEBR	2	3	3
ALNE	1	2	2
LITT	1	2	2
SESC	1	2	2
BULB	1	2	1
QUER	1	2	1

Mosses

LIGN	3	5	6
HEMO	3	5	5
OLIT	2	3	4
SLIT	2	3	4
WOOF	2	3	4
BOGS	2	3	3
FENS	2	3	3
GRAS	2	3	3
MARS	2	3	3
SOIL	1	2	2
DUNS	1	2	1
UNCL	1	2	0

Unclassified

UNCL	18	28	0
------	----	----	---

Context 3455 Sample 147/T Number of taxa 25

	Group	Number of taxa	%taxa	AIV
Uses				
	FOOS	3	12	7
	FOOO	1	4	1
Vegetation				
	CHEN	11	44	31
	SECA	6	24	19
	MOAR	3	12	5
	PLAN	2	8	5
	ARTE	2	8	4
	BIDE	2	8	4
	FEBR	2	8	3
	ISNA	1	4	3
	NACA	2	8	3
	SESC	2	8	3
	CAKI	1	4	2
	EPIL	1	4	2
	PHRA	1	4	2
	QUFA	1	4	2
	RHPR	1	4	2
	TRGE	2	8	2
Mosses				
	FENS	1	4	2
	GRAS	1	4	2
	MARS	1	4	2
Unclassified				
	UNCL	7	28	0

Context 3459 Sample 157/M Number of taxa 92

	Group	Number of taxa	%taxa	AIV
Uses				
	FOOS	14	15	56
	FOOF	6	7	21
	FOOO	4	4	12
	FIBR	1	1	6
	WOOD	1	1	1
Vegetation				
	CHEN	25	27	81
	SECA	20	22	65
	MOAR	15	16	35
	ARTE	11	12	26
	BIDE	5	5	17

	QUFA	8	9	16
	PLAN	4	4	13
	RHPR	4	4	12
	NACA	5	5	11
	FEBR	5	5	9
	CAKI	2	2	8
	EPIL	3	3	8
	SCCA	3	3	8
	PHRA	4	4	7
	ALNE	2	2	6
	LITT	1	1	4
	OXSP	2	2	4
	ISNA	1	1	2
	POTA	1	1	2
	QUER	1	1	1
	SESL	1	1	1
	TRGE	1	1	1
Mosses				
	GRAS	2	2	4
	HEMO	2	2	4
	LIGN	2	2	4
	SLIT	2	2	4
	WOOF	2	2	4
	BOGS	1	1	2
	FENS	1	1	2
	MARS	1	1	2
Ecology				
	CALC	1	1	2
Unclassified				
	UNCL	23	25	0

Context 3459 Sample 157/SPT Number of taxa 27

	Group	Number of taxa	%taxa	AIV
Uses				
	FOOS	7	26	22
	FIBR	1	4	6
	FOOO	1	4	6
	WOOD	1	4	1
Vegetation				
	CHEN	8	30	18
	SECA	5	19	15
	QUFA	4	15	6
	PLAN	2	7	5
	BIDE	2	7	4
	PHRA	1	4	3
	RHPR	2	7	3
	ARTE	1	4	2

	CAKI	1	4	2
	MOAR	1	4	2
	NACA	1	4	2
	BULB	1	4	1
	QUER	1	4	1
Mosses				
	LIGN	2	7	4
	WOOF	2	7	4
	FENS	1	4	2
	GRAS	1	4	2
	HEMO	1	4	2
	MARS	1	4	2
	OLIT	1	4	2
	SLIT	1	4	2
	SOIL	1	4	2
Unclassified				
	UNCL	5	19	0

Context 3463 Sample 170/M Number of taxa 13

	Group	Number of	%taxa	AIV
		taxa		

Uses				
	FOOS	1	8	6
Vegetation				
	CHEN	5	38	20
	QUFA	2	15	8
	RHPR	2	15	8
	SECA	3	23	8
	ARTE	2	15	6
	BIDE	1	8	6
	ISNA	1	8	6
	ALNE	1	8	4
	EPIL	1	8	4
	MOAR	2	15	4
	PHRA	1	8	2
Unclassified				
	UNCL	2	15	0

Context 3463 Sample 170/T Number of taxa 6

	Group	Number of taxa	%taxa	AIV
Uses	FOOS	2	33	6
Vegetation	CHEN	3	50	7
	ARTE	2	33	4
	QUFA	2	33	4
	RHPR	2	33	4
	NACA	1	17	2
	SECA	1	17	2
Unclassified	UNCL	1	17	0

Context 3468 Sample 168/M Number of taxa 52

	Group	Number of taxa	%taxa	AIV
Uses	FOOS	2	4	6
	FOOO	2	4	5
	FIBR	1	2	3
	FOOF	1	2	1
Vegetation	CHEN	19	37	48
	SECA	14	27	31
	MOAR	8	15	20
	BIDE	5	10	15
	ARTE	5	10	12
	PHRA	6	12	12
	QUFA	4	8	9
	CAKI	2	4	8
	NACA	3	6	8
	PLAN	3	6	7
	EPIL	3	6	6
	FEBR	2	4	6
	SCCA	3	6	6
	ALNE	2	4	4
	ISNA	1	2	3
	BULB	1	2	2
	LITT	1	2	2
	POTA	1	2	2
	RHPR	1	2	2
	SESC	1	2	2
	SESL	1	2	1

Mosses

HEMO	2	4	4
WOOF	2	4	4
GRAS	1	2	2
LIGN	1	2	2
OLIT	1	2	2
SOIL	1	2	2

Unclassified

UNCL	11	21	0
------	----	----	---

Context 3468 Sample 168/T Number of taxa 66

Group	Number of taxa	%taxa	AIV
-------	----------------	-------	-----

Uses

FOOS	4	6	12
FOOO	3	5	7
FIBR	2	3	6
FOOF	1	2	3
USEF	1	2	3

Vegetation

CHEN	23	35	65
SECA	16	24	41
MOAR	11	17	30
ARTE	9	14	18
BIDE	4	6	14
PHRA	4	6	13
PLAN	3	5	11
QUFA	4	6	9
CAKI	2	3	8
FEBR	3	5	8
SCCA	3	5	8
NACA	2	3	5
EPIL	2	3	4
LITT	1	2	4
RHPR	2	3	4
ISNA	1	2	3
OXSP	1	2	2
SESL	1	2	1

Mosses

LIGN	3	5	6
WOOF	3	5	6
GRAS	2	3	4
HEMO	2	3	4
OLIT	2	3	4
FENS	1	2	2
MARS	1	2	2
SLIT	1	2	2
SOIL	1	2	2

Ecology	CALC	1	2	2
Unclassified	UNCL	17	26	0

Context 3468 Sample 169/M Number of taxa **

Group	Number of taxa	%taxa	AIV
-------	----------------	-------	-----

Uses

FOOS	7	6	20
FOOO	4	4	13
FIBR	2	2	9
FOOF	2	2	6
WOOD	3	3	5
DYES	1	1	1
HERB	1	1	1

Vegetation

CHEN	28	26	80
SECA	21	19	60
MOAR	21	19	47
BIDE	7	6	24
PLAN	6	6	23
ARTE	10	9	19
FEBR	9	8	15
NACA	7	6	15
PHRA	5	5	13
QUFA	7	6	13
EPIL	5	5	11
ISNA	3	3	11
CAKI	2	2	8
RHPR	4	4	8
TRGE	5	5	7
OXSP	3	3	6
SCCA	3	3	6
SESC	3	3	5
ALNE	2	2	4
BULB	1	1	2
LITT	1	1	2
QUER	2	2	2
SESL	1	1	1

Mosses

HEMO	4	4	8
GRAS	3	3	6
WOOF	3	3	6
LIGN	2	2	4
BOGS	1	1	2
FENS	1	1	2
MARS	1	1	2
OLIT	1	1	2

	SLIT	1	1	2
	SOIL	1	1	2
	UNCL	1	1	0
Ecology				
	FUGE	2	2	8
	CALC	2	2	3
Unclassified				
	UNCL	33	31	0

Context 3474 Sample 171/T Number of taxa 15

	Group	Number of taxa	%taxa	AIV
Uses				
	FOOS	2	13	6
	FIBR	1	7	3
	FOOO	1	7	3
Vegetation				
	CHEN	9	60	18
	ARTE	4	27	13
	SECA	6	40	11
	QUFA	2	13	10
	RHPR	2	13	10
	ALNE	1	7	8
	BIDE	2	13	8
	EPIL	1	7	8
	NACA	1	7	2
Unclassified				
	UNCL	3	20	0

Context 3475 Sample 163/M Number of taxa 67

	Group	Number of taxa	%taxa	AIV
Uses				
	FOOS	5	7	18
	FIBR	2	3	12
	FOOO	2	3	12
	USEF	1	1	6
	WOOD	1	1	1
Vegetation				
	CHEN	21	31	84
	SECA	16	24	58

MOAR	12	18	37
ARTE	9	13	26
BIDE	5	7	19
EPIL	5	7	18
PLAN	3	4	14
ISNA	2	3	12
NACA	4	6	12
PHRA	4	6	12
SCCA	3	4	12
QUFA	4	6	11
FEBR	3	4	10
CAKI	2	3	8
RHPR	2	3	8
SESC	2	3	8
ALNE	2	3	6
LITT	1	1	4
OXSP	2	3	4
SESL	1	1	2
TRGE	1	1	1

Mosses

BOGS	2	3	5
HEMO	1	1	2
LIGN	1	1	2
SLIT	1	1	2
WOOF	1	1	2
UNCL	1	1	0

Ecology

FUGE	1	1	6
------	---	---	---

Unclassified

UNCL	15	22	0
------	----	----	---

Context 3476 Sample 175/M Number of taxa 32

Group	Number of taxa	%taxa	AIV
-------	----------------	-------	-----

Uses

FOOS	2	6	9
FOOF	1	3	3
WOOD	1	3	1

Vegetation

CHEN	13	41	56
SECA	8	25	34
ARTE	3	9	12
ISNA	2	6	12
QUFA	3	9	12
BIDE	2	6	10
RHPR	2	6	10
MOAR	3	9	9
PLAN	1	3	9

	ALNE	1	3	6
	EPIL	1	3	6
	FEBR	1	3	4
	PHRA	2	6	4
Ecology				
	FUGE	1	3	6
Unclassified				
	UNCL	12	38	0

Context 3476 Sample 176/T Number of taxa 25

Group	Number of taxa	%taxa	AIV
-------	-------------------	-------	-----

Uses

FOOS	2	8	6
------	---	---	---

Vegetation

CHEN	15	60	37
SECA	8	32	21
BIDE	4	16	9
ARTE	3	12	8
QUFA	3	12	8
RHPR	3	12	8
PLAN	1	4	6
PHRA	2	8	5
ALNE	1	4	4
EPIL	1	4	4
CAKI	1	4	2
NACA	1	4	2
SCCA	1	4	2
OXSP	1	4	1

Unclassified

UNCL	5	20	0
------	---	----	---

Context 3477 Sample 172/M Number of taxa 48

Group	Number of taxa	%taxa	AIV
-------	-------------------	-------	-----

Uses

FOOS	7	15	28
FOOF	3	6	18
FOOO	2	4	6
FIBR	1	2	3

Vegetation

CHEN	21	44	81
SECA	12	25	47
MOAR	8	17	28
BIDE	6	13	27
ARTE	6	13	20
QUFA	6	13	18
PLAN	4	8	17
RHPR	5	10	16
EPIL	2	4	8
NACA	2	4	8
FEBR	2	4	6
SCCA	2	4	6
SESC	2	4	6
ALNE	1	2	4
CAKI	1	2	4
LITT	1	2	4
PHRA	2	4	4
ISNA	1	2	3
TRGE	1	2	2

Mosses

BOGS	1	2	3
------	---	---	---

Unclassified

UNCL	9	19	0
------	---	----	---

Context 3477 Sample 174/M Number of taxa 49

Group	Number of taxa	%taxa	AIV
-------	----------------	-------	-----

Uses

FOOS	9	18	39
FOOF	3	6	12
FOOO	2	4	12
FIBR	1	2	6
DYES	1	2	1
HERB	1	2	1

Vegetation

CHEN	22	45	87
SECA	15	31	64
BIDE	5	10	19
MOAR	6	12	17
RHPR	7	14	16
PLAN	3	6	13
QUFA	6	12	13
ARTE	5	10	12
CAKI	2	4	10
ISNA	3	6	10
EPIL	3	6	8
ALNE	2	4	6
FEBR	1	2	4
NACA	2	4	4

	PHRA	2	4	4
	SCCA	2	4	4
	LITT	1	2	2
	SESC	1	2	2
Ecology				
	FUGE	2	4	10
Unclassified				
	UNCL	7	14	0

CALC : Calcicolous plants
FUGE : Calcifuge plants

Mosses

BOGS : Mosses found in bogs
DUNS : Mosses of dune-slacks
FENS : Mosses of fens
GRAS : Mosses of grassland
HEMO : Mosses of heathland/moorland
LIGN : Mosses of living and dead bark and wood
MARS : Mosses of marshes
OLIT : Mosses of drier, unshaded rocks, stones, and walls
SLIT : Mosses of shaded, moist rocks, stones, and walls
SOIL : Mosses of bare, usually well-drained soil in unshaded places
WOOF : Mosses of woodland floor habitats, principally humus and litter

UNCL : Unclassified in any way