

Centre for Archaeology Report 50/2004

**Pottery from Excavations at Silkstone, Barnsley,  
South Yorkshire**

Christopher Cumberpatch

© English Heritage 2004

ISSN 1473-9224

*The Centre for Archaeology Report Series incorporates the former Ancient Monuments Laboratory Report Series. Copies of Ancient Monuments Laboratory Reports will continue to be available from the Centre for Archaeology (see back cover for details).*

## **Pottery from Excavations at Silkstone, Barnsley, South Yorkshire**

Christopher Cumberpatch

### **Summary**

This report presents the analysis of a ceramic assemblage from the archaeological excavation on the site of the 17th century glasshouse at Silkstone, South Yorkshire. The ceramic assemblage includes pottery wasters, saggars and bricks and relates to historically known pottery production. The earliest historical date for the pottery production at Silkstone is 1754, but the archaeological evidence (in particular clay pipes) suggests that most of the pottery was dumped c.1700-c.1730). The pottery consists of press-moulded dishes (with trailed and combed slip decoration) and thrown plates and mugs (with manganese mottled decoration). The assemblage is compared with similar material from Bolsterstone and Midhope

### **Keywords**

Ceramic  
Post Medieval

### **Author's address**

22 Tennyson Road, Lower Walkeley, Sheffield S6 2WE

*Many CfA reports are interim reports which make available the results of specialist investigations in advance of full publication. They are not subject to external refereeing, and their conclusions may sometimes have to be modified in the light of archaeological information that was not available at the time of the investigation. Readers are therefore advised to consult the author before citing the report in any publication and to consult the final excavation report when available.*

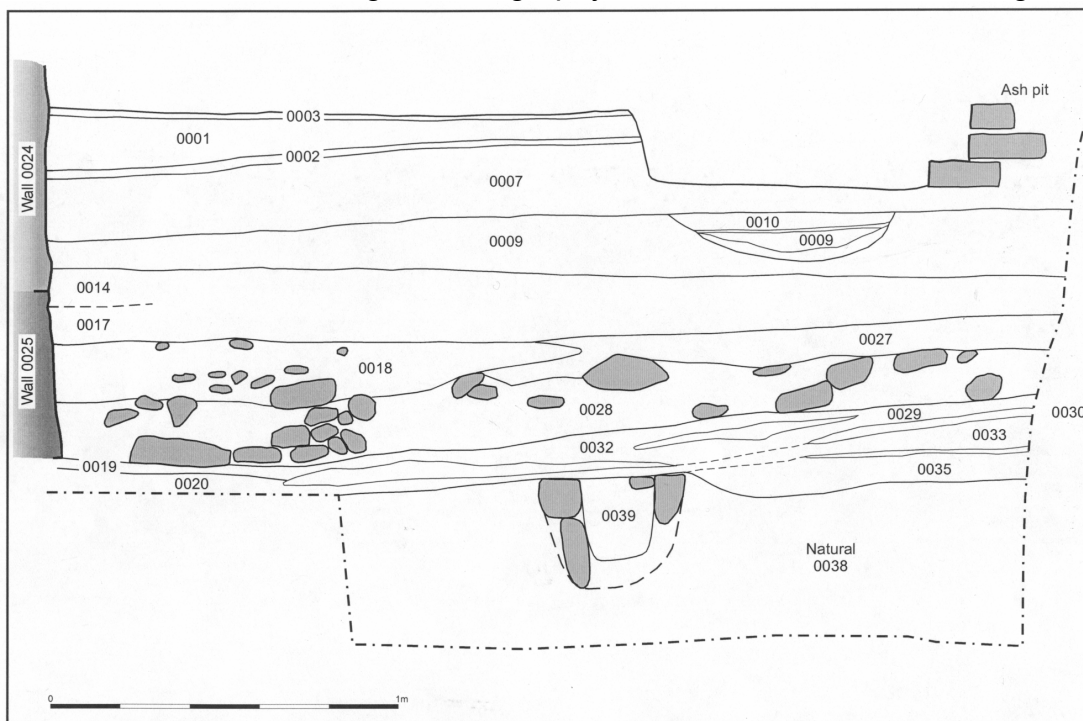
*Opinions expressed in CfA reports are those of the author and are not necessarily those of English Heritage.*

## Introduction

The pottery assemblage from excavations at Silkstone was examined by the author between 6<sup>th</sup> November and 25<sup>th</sup> November 2002. The assemblage consisted of three principal elements; pottery sherds, saggar fragments and kiln brick fragments. The pottery assemblage from Trench 1 consisted of 2557 sherds of pottery weighing 19,371 grams and representing a maximum of 2484 vessels. The average sherd weight was low at only 7.5 grams. Trench 2 produced fourteen sherds weighing 202 grams and representing a maximum of thirteen vessels. The processing of soil samples produced a further 266 fragments, the total weight of which was not determinable due to the very small size of some of the pieces recovered. The saggar fragments totalled ninety sherds weighing 10,333 grams and representing eighty-five vessels. One hundred and twenty-eight brick fragments were identified weighing 16,397 grams. In addition a total of 108 fragments of fired clay were noted weighing 3,741 grams. The data are summarised in Appendix 1.

## Summary of Archaeological Excavation

English Heritage's Centre for Archaeology carried out a four week excavation at Silkstone, Yorkshire (NGR SE 29270584) during the spring of 2002 (Cromwell *et al.* 2002). The initial aim of this excavation was to determine whether or not a particular standing building was associated with the historically attested 17<sup>th</sup> century glass industry. This building was tentatively linked to the historically recorded glass industry in a MPP Step 3 report on glass. Excavation within an area of 1m by 2m proved that well over 1m of archaeological stratigraphy survives beneath the building.



*Figure 1. South-facing section of excavated trench, showing the principal contexts containing evidence for glassworking.*

The earliest phases of activity provided evidence for glassworking in the second half of the 17<sup>th</sup> century (floor surfaces and demolition layers containing glass and

glassworking waste). The glassworking layers were overlain by a series of layers containing large quantities of pottery, pottery wasters and saggars).

Contexts above [0014] (Figure 1) contained large quantities of pottery and saggars. The clay pipes recovered from these contexts (Table 1, see also Higgins 2003) show that they were deposited largely in the first half of the 18<sup>th</sup> century.

*Table 1. Summary of dating evidence for principal contexts*

<b>Context</b>	<b>Clay pipes</b>	<b>Date</b>
0001	2 stems	c.1740–1850
0002	5 stems	c.1700–1740
0004	2 stems	c.1800–1860
0007	1 bowl and 9 stems	c.1700–1750
0009	8 bowls and 56 stems	c.1700–1730
0014	1 bowl and 2 stems	c.1690–1720
0017	4 bowls and 3 stems	c.1680–1700
0020	2 stems	c.1670–1730

## **Methodology**

All of the material was examined and recorded in line with the guidelines published by the MPRG (2001).

Examination and description of the fabrics was based upon the use of a X10 hand lense with an attached millimetre scale. Examples of each fabric were taken for inclusion in the regional ceramics reference collection. The descriptions of the vessel forms were based upon the standardised glossary recently published by the MPRG and those of decorative motifs and techniques were taken from the descriptions used by Barker (unpublished 1, 2, 1993).

Quantification was based upon the different ware types identified, sub-divided by fabric type. The number of sherds, the weight of sherds and the maximum number of vessels (ENV) were recorded. The latter measure is based upon a count of the sherds with joining sherds counted as one, unlike the basic number data which is a total sherd count with the joins discounted.

## **The Pottery Assemblage**

The pottery assemblage was characterised by a high degree of fragmentation, the average sherd weight in Trench 1 being only 7.5 grams. Very few complete vessel profiles were identified, as can be seen from the range of sherds selected for illustration. While the broad outline of the range of vessels does appear to be clear, it seems likely that the smaller, thin walled thrown hollow wares are under-represented by virtue of the fact that they were more easily broken and thus less likely to survive as recognisable vessel forms. The vessel types described and illustrated are thus likely to be biased in favour of the more robust vessels (dishes, plates, mugs, jugs). The area excavated was too restricted to permit any meaningful analysis of the spatial variation in vessel size, but it might be suggested that dumps of larger sherds

probably survive away from the building (unless removed by extensive groundworks). This was certainly the case with the excavations on the site of the 19<sup>th</sup> century Denaby Pottery near Conisbrough (Cumberpatch, unpublished) where paths and working areas were clearly distinguishable from waster dumps through comparison between the sherds sizes on different parts of the site. While the waster dumps produced extremely significant information about the range of vessels manufactured, the data from the paths and working areas was of only limited value. Although excavation of buildings and structural features are clearly of great importance, future excavations of potteries which aim to recover evidence for the range of products should include an element targeted at areas peripheral to those where the day-to-day working activities were concentrated.

### ***Fabrics***

A number of distinct fabrics were identified at the macroscopic level (using a X10 hand lens). The extent to which these represent different clay sources must await a programme of petrological and chemical analysis.

#### ***Fabric 1***

Fabric 1 is a very fine sandy textured fabric with sparse rounded red non-crystalline inclusions (0.4mm–0.8mm) and rare large white inclusions (up to 1.0mm). Occasional thin white streaks are also present. The fabric occurs in a range of colours, from a very pale buff or orange-buff to a mid-orange and occasionally grey. More extreme variations are represented by Fabric 1 type.

Vessel forms included press-moulded dishes with trailed and combed slip decoration and thrown plates with mottled glaze although the former were by far the commoner. Hollow wares were relatively uncommon in this fabric, particularly when compared to the numbers found in Fabric 4.

#### ***Fabric 2***

A rare but very distinctive fabric which is extremely hard and dense with a smooth, vitrified appearance and a dark red colour. Very thin white streaks give a wood-grain like effect in cross-section. Voids are moderately common and are typically very thin and elongated. Inclusions resemble those in Fabric 1 and as with Fabric 1, variations that lay outside the norm have been designated as Fabric 2 type.

Vessel forms in Fabric 2 were limited to press-moulded dishes with trailed and combed slip decoration.

#### ***Fabric 3***

A very distinctive fabric characterised by smooth, homogenous dark red stripes closely resembling those seen in Fabric 2, between the buff to pale orange fine sandy textured body more closely resembling Fabric 1. It also contains occasional large white inclusions. This would seem to suggest that there is a real distinction to be made between Fabrics 1 and 2 (rather than a difference in firing conditions) and it may be that two clay sources were involved with Fabric 3 representing a mixture of the two. Only petrological and chemical analysis will make the position clearer.

Although occasional examples of other forms were noted, Fabric 3 was used primarily for press-moulded dishes with trailed and combed slip decoration.

#### *Fabric 4*

A pale creamy-buff to white fabric with very occasional fine black inclusions and occasional white non-crystalline rock fragments. It tends to be finer and more homogeneous than Fabrics 1 and 2 and is readily distinguishable from them.

Fabric 4 was associated particularly with manganese mottled glazed wares, notably hollow wares such as mugs and jugs, although mottled ware thrown plates were also made in this fabric. The contrast between the use of this fabric for hollow wares and Fabrics 1, 2 and 3 for press moulded flatwares would seem to imply that the distinction is a real one in that it relates to the methods of production and to intentionality on the part of the potters. The real nature of the differences between the fabrics must await more detailed analysis. Fabric 4 type is a dark to mid-red version of Fabric 4 and is most probably the result of variations in the atmosphere within the kiln during firing.

#### *Fabric 5*

A fine red fabric containing sparse fine white inclusions (0.4mm–0.6mm) similar to some Blackware fabrics but rather less dense. It appears to be associated particularly with the late Blackwares and resembles the 17<sup>th</sup> century Blackware fabrics identified at Pontefract Castle (Cumberpatch 2001), although it is presumably somewhat later in date. Fabric 5 appears to be preferentially associated with hollow wares, although occasional flatware vessels were also noted.

#### *Fabric 6*

A fine, even dark red fabric, resembling Fabric 5 but without the range of fine inclusions and similar in texture to Fabric 4 but with a distinctive matte dark red colour. The fabric appears to be particularly associated with manganese mottled wares and with vessels of a similar form but without the distinctive mottled glaze (Mottled ware type). An apparent variant of the type (Fabric 6 type) is lighter in colour and somewhat less dense than Fabric 6 but lacks the range of fine inclusions typical of Fabrics 4 and 5. As with Fabrics 4 and 5, Fabric 6 was preferentially associated with hollow wares.

#### *Fabric 7*

A soft, fine textured pinkish buff sandy fabric generally distinguished by a matte or dull shiny red glaze, sometimes streaky internally. A relatively rare type, but relatively easily distinguished by the thick red glaze with which it seems preferentially associated. Both flatwares and hollow wares were found in this fabric.

#### *Fabric 8*

A rare white to buff fabric similar in general appearance to Fabric 1 but containing small, sparse platy fragments of non-crystalline rock and sparse fine rounded red non-crystalline grains. The fabric is associated particularly with a distinctive robust black glazed ware, which occurred only rarely within the assemblage.

#### *Other fabrics*

Amongst the other fabrics noted were Coarse Redwares (*CRW*) which are a common local type but which have not been comprehensively studied and for which there is consequently no established type series. The same applies to the Brown Glazed Coarsewares (*BGCW*). Although documentary sources (Lawrence 1974) suggest that the potteries producing these utilitarian wares were widespread, none have yet been

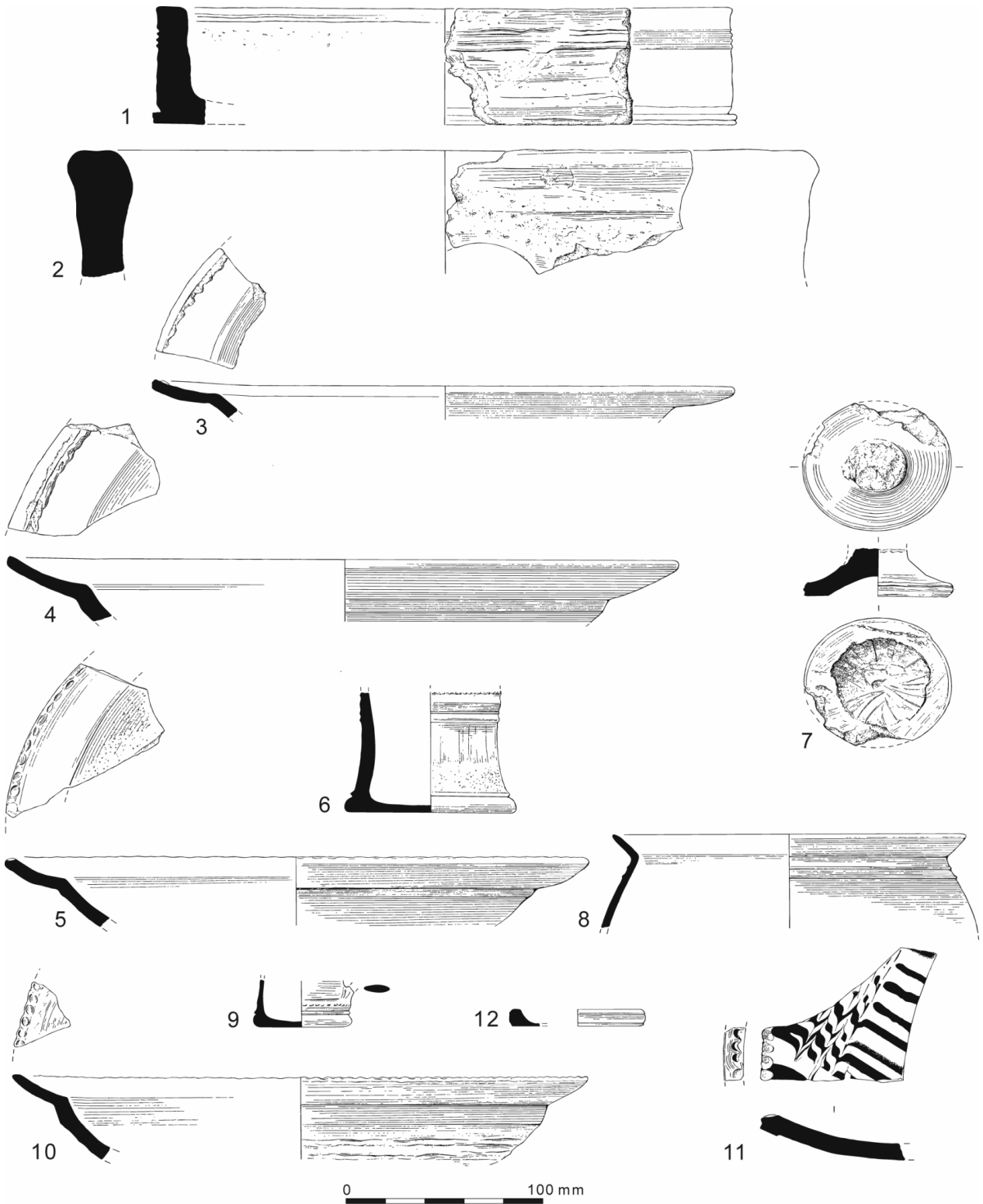


Figure 2. Saggars and pottery from Silkstone (1/3). Illustrated by Chris Evans.

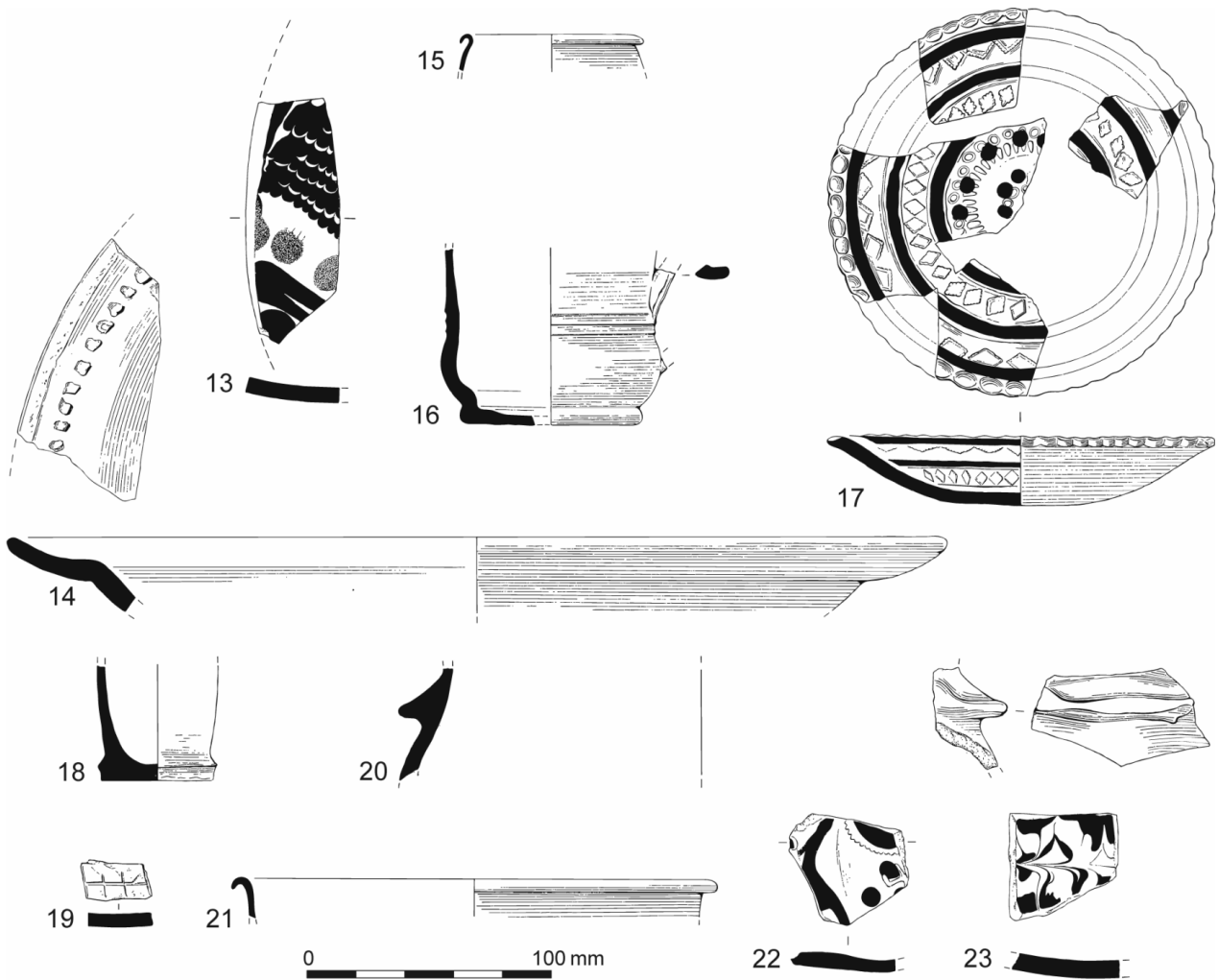


Figure 3. Pottery from Silkstone (1/3) . Illustrated by Chris Evans.

excavated in the area and a detailed study of these potteries and their products is long overdue.

### **Wares and decoration**

The terms used to describe the pottery have been taken from Barker (unpublished 1, 2) with additions based upon the range of observed variation within the assemblage.

### **Slipware**

The two commonest varieties of slipware identified were *Trailed slipware* and *Combed slipware*, both of which were represented by press moulded dishes. Smaller numbers of sherds from slip decorated hollow wares were also noted but formed only a very small proportion of the whole assemblage. These tended to be thin walled vessels which survived only as small sherds and which were consequently difficult to ascribe to vessel forms. It should not be assumed that the Trailed / Combed distinction is necessarily entirely definitive of two mutually exclusive types of decorated vessel as the sherds were generally rather small and there is a danger that some trailed slipware and combed slipware sherds actually belonged to the same vessels, with the combing limited to a section of the vessel which elsewhere was simply trailed. However this may be the two types have been distinguished in this report, primarily for the purposes of classification and description. The same factor, small sherd size, has precluded identification of typical or recurrent slip designs,



although it is clear that there were a range of designs based upon the thickness and spacing of lines and bands and whether the yellow slip was over or under the brown. The majority of slip decorated vessels bore two colours; yellow and brown, but a small number were tri-coloured with two shades of brown, one more red-brown than the other.

The commonest variety of slipware had a layer of white slip applied first, followed by red brown and/or brown. Less common were sherds in which this pattern was reversed and white slip was applied over brown. The yellow colour derives from the presence of the glaze over the white slip, as also found on Yellow wares and Yellow Glazed Coarsewares.

#### *Mottled ware*

Mottled ware, sometimes known as Manganese Mottled ware, was amongst the commonest of the types identified and appears to have been linked mainly with hollow ware forms and the distinctive thrown plates described below. The type is distinguished by its distinctive streaky or mottled glaze, the background colour varying between a honey colour or a dark brown. Mottling generally takes the form of linear streaks, but there is also a variant with a more speckled, non-linear mottling. A small number of sherds appeared to have lighter glaze inside than out. This and other variations are detailed in the tables. The background colour varies and where this is dark, the mottling is less obvious. At the darker end of the range the type merges with Late Blackware.

#### *Late Blackware*

Late Blackware from Silkstone is distinguished by the use of very dark brown or black glaze on one of the normal local fabrics, most commonly 4, 5 or 6. It sometimes has a dark red slip under the glaze, but is more commonly unslipped. Vessels were typically glazed entirely internally but externally the glaze often ended above the base leaving a buff or dull red unglazed band around the beaded base and on the lowest parts of the wall. Context [0009] produced a small group of Blackwares in Fabric 5 which resembled those more typically found in the 17<sup>th</sup> century (cf. Cumberpatch 2001). The fabric was a typical blackware type, hard and dense in texture and dark red in colour, very different from the fabrics associated with the Mottled wares and slipwares.

#### *Redware type and Black Glazed ware*

One of two small groups with a distinctive character, the Redware type was distinguished by the presence of an opaque, matte red glaze on a distinctive white fabric (Fabric 7). It appeared to be a local type, but the small quantity present must raise doubts as to whether it was manufactured on the site. The Black Glazed ware was distinguished from the late Blackware by virtue of its distinctive white fabric (Fabric 8) and thickness of the sherds. The precise place of these two small, but very distinctive, groups in the wider range of products is unclear.

#### **Vessel types**

Very few complete vessel profiles were recovered and consequently the precise range of vessel types manufactured at Silkstone remains unknown. Those vessel types which could be identified are described below.

## Flatware

**Press moulded dishes:** The commonest slip decorated vessel was the wide, press-moulded dish bearing trailed and/or combed slip designs. The vessels frequently had a 'pie-crust' type rim and where this was absent the dishes had a plain flat, knife trimmed rim. Examples are shown in Figures 1.11, 2.13, 2.22, 2.23, 4, 5 and 6. Only one example of a more elaborate design was recovered; a vessel from context [0009] which bore a combination of moulded and slip-trailed motifs (Figure 17).

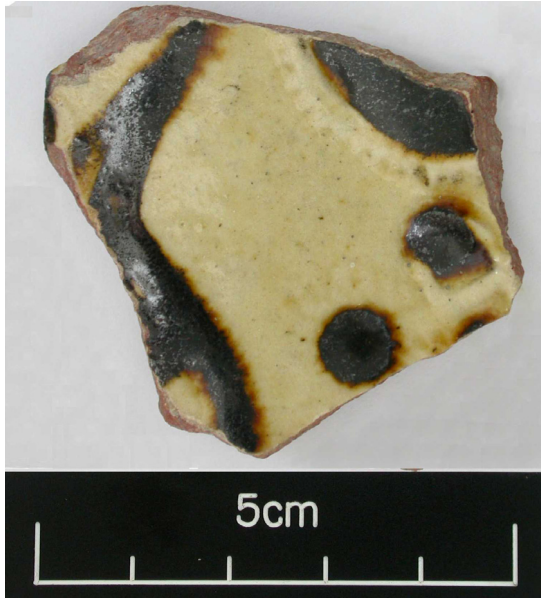


Figure 4. Press moulded body sherd from a dish with trailed slip decoration (unstratified) cf. figure 3.22



Figure 5. Complex trailed slip design (unstratified) cf. figure 3.23



Figure 6. Press-moulded dish with pie-crust rim and trailed and combed decoration (context [0004]) cf. figure 2.11

**Thrown plates:** Thrown plates were the commonest flatware type to be decorated with mottled glaze and had a distinct profile which served to set them apart from the other common flatware product, press-moulded dishes. The presence and character of stacking scars, particularly those typical of 'pie-crust' type rims suggested that both

varieties of flatware were fired together, usually face-to-face and base-to-base, as also suggested by Barker in the case of the Bolsterstone pottery (Ashurst 1987: 211). Examples of the typical profile are shown in Figures 2.3, 2.4, 2.5, 2.10 and 3.14 together with the characteristic stacking marks.



*Figure 7. Thrown plate rim with stacking scars (context [0007]) cf. figure 2.3*



*Figure 8. Thrown plate rim with stacking scars (context [0007]) cf. figure 2.4*



*Figure 9. Thrown plate with pie-crust decoration (context [0007]) cf. figure 2.5*



*Figure 10. Thrown plate with prominent stacking scars (context [0009]) cf. figure 3.14*



*Figure 11. Thrown plate with pie-crust rim (context [0004]) cf. figure 2.10*

### *Hollow ware*

*Mugs:* no complete mug profiles were present in the assemblage, but a number of bases and rims were identified which appeared to belong to straight-sided, handled vessels. Typically these have a band of ridges immediately above the base, sometimes described as a rilled band. The evidence from body sherds which appear to be from such vessels suggests that such bands also existed on the body. The size of the vessels appeared to vary widely, and included the commoner size shown in Figure 6 and a rarer small size shown in Figure 2.9. Larger mugs were represented by small fragments of base.

*Mug/Jug:* this term has been applied to vessels, mainly represented by bases, which have a flat base and which bulge out immediately above the beaded base to form a rounded or globular body. The absence of complete vessel profiles makes it difficult to determine the precise shape or type of vessel and some room for doubt must be left as a result of this. It should be noted however that no jug spouts were identified, which might indicate that mugs were the commoner form. An example of a jug from the Swinton (later Rockingham) pottery has been published by Cox and Cox (2001: Figure 6). Figure 3.16 shows a typical example of a base and lower wall sherd from Silkstone.

*Other hollow wares:* A number of sherds belonged to hollow wares of undetermined forms. Amongst these were vessels with everted rims (e.g. Figure 2.8), some of which may have had bases similar to the mug/jug types described above.

*Tall narrow vessels:* A small group of narrow bases appeared to belong to a distinctive group of tall narrow vessels (termed 'small mugs' in the tables) with a base diameter of between c.3.8 and c. 4.3 cm. No complete profiles of these vessels were identified but one of the most complete examples is shown in Figure 3.18. The forms resembled those of Blackwares but were somewhat smaller.

*Thin walled wares:* An entire class of vessels was represented by little more than small body sherds. These vessels, distinguished by their very thin walls and overhanging rims (e.g. Figures 3.15 and 3.21) were poorly represented due largely to their very fragile nature and the character of the excavated deposit which was not one in which they were likely to survive to any substantial degree. The overhanging rims suggest that they were not mugs but rather small jars, perhaps with globular or rounded body profiles. The majority appeared to have a mottled finish although some sherds were closer to the Late Blackware type (e.g. context [0009]; Dark Mottled ware). It is unlikely that the numbers of sherds in the assemblage accurately reflects the place of these vessels in the output of the pottery.

### *Other items*

Very few objects other than pottery sherds were included in the assemblage, but a small number of items stood out. The first was a *glazed clay marble* (context [0009]) made of variegated red and buff clay giving a marbled finish under clear glaze. The second object was part of a *fired clay plaque* with intersecting incised lines on one side (context [0009], Figure 3.19). The purpose of this object is unknown. A single *pedestal base* was noted in context [0009] (Figure 2.7). There was no indication of the form of the complete vessel and no other sherds belonging to it were identified. Figure 2.12 shows an *object* of undetermined form and function, resembling a ring-foot base but with no walls. It appears to be a shallow circular dish, glazed internally.

One Mottled ware horizontal side handle was recovered from context [0001] (Figure 3.20). This presumably belonged to a large cooking pot, but no other sherds could be positively associated with it.

## Saggars

Relatively few sagger fragments were recovered during the excavation (Ninety sherds weighing 10,333 grams; summarised in Table 2) and only two types were identified. The first, represented by a single sherd, was from a shallow vessel (Figure 2.1) while the remainder appeared to be from taller vessels with thick, slightly everted rims (Figure 2.2). Body sherds included evidence of 'cut-outs'; deliberate holes cut through the sagger walls to facilitate the flow of hot gases during firing. No evidence was noted of sockets for the insertion of bars or props and it seems from the evidence of stacking scars that vessels were in contact with each other during the firing process. One sagger base included fragments of bitstone internally, suggesting that this was used to prevent direct contact between the lowest vessel and the sagger base.

*Table 2. Saggars and sagger fragments*

Context	Type	No.	Wt.	ENV	Fig	Notes
0001	Sagger	1	195	1	2.1	Shallow sagger; complete profile
0001	Sagger	2	8	2		Two flakes of sagger material
0001	Sagger base	10	3290	10		Flat bases, one with 'cut-out' immediately above base, one with small bitstone fragments
0001	Sagger body sherds	32	1360	32		All plain body sherds
0001	Sagger body sherds	3	160	3		Body sherds with 'cut-outs'
0001	Sagger body sherds	1	85	1		Body sherd with 'cut-outs'
0001	Sagger body sherds	2	300	2		Body sherds with thick slag-like accretions
0001	Sagger rim	9	1030	7		Slightly everted rims
0002	Sagger body sherd	1	107	1		Thick body sherd with brown glaze internally
0002	Sagger body sherds	2	72	1		Plain body sherds
0002	Sagger rim	1	81	1		Greenish glazed sagger rim
0002	Sagger rim	1	84	1		Brown glazed sagger rim with part of a 'cut-out' section
0007	Sagger base	2	495	2		Base and walls of sagger
0007	Sagger body sherd	1	50	1		Body sherd with 'cut-out' section
0007	Sagger body sherd	1	40	1		
0007	Sagger rim	1	330	1	2.2	Rim with 'cut-out' section
0007	Sagger rim	2	440	2		
0009	?Sagger	1	166	1		Base with no evidence of use
0009	Sagger	2	270	1		Base with glaze and stacking scars
U/S	Sagger base	1	175	1		Dark glaze
U/S	Sagger body sherds	4	380	4		
U/S	Sagger rim	5	635	5		Coarse fabric with dark glaze internally
U/S	Sagger rim	5	580	4		Coarse fabric with dark glaze internally
	<b>Total</b>	<b>90</b>	<b>10333</b>	<b>85</b>		

## Bricks

Bricks formed a substantial proportion of the non-pottery vessel ceramic material recovered from the excavation (128 fragments weighing 16,397 grams; Table 3). The majority were heavily fired and over-fired and many were partially coated in glaze or

glass. These bricks were only recovered from contexts post-dating the glass works and so are likely to be associated with the pottery industry.

*Table 3. Bricks and brick fragments*

<b>Context</b>	<b>Type</b>	<b>No.</b>	<b>Wt.</b>	<b>ENV</b>	<b>Notes</b>
0001	?Fire brick	2	27	2	Brick with glaze
0007	Brick	17	1620	17	Brick fragments with glaze coating; heavily burnt
0007	Brick	6	2830	6	Brick fragments with glaze coating; heavily burnt
0007	Brick	3	2800	3	Brick fragments with glaze coating; heavily burnt
0007	Brick	2	3300	2	Brick fragments with glaze coating; heavily burnt
0007	Brick	2	1730	2	Brick fragments with glaze coating; heavily burnt
0007	Brick	30	1080	30	Heavily fired and over-fired buff brick
0007	Brick	30	825	30	Heavily fired and over-fired buff brick
0007	Brick	20	1280	20	Heavily fired and over-fired buff brick
0007	Brick	11	675	11	Heavily fired and over-fired buff brick
0007	Brick	1	25	1	Heavily fired and over-fired buff brick
U/S	Brick	4	205	4	Kiln bricks
	<b>Total</b>	<b>128</b>	<b>16397</b>	<b>128</b>	

### Kiln furniture

Very little formal kiln furniture was identified, but a considerable quantity of fired clay lumps, plates and strips were present amongst the brick fragments (Table 4). These appeared to have served a variety of purposes, the majority seemingly connected with sealing gaps and cracks in the kiln structure. Others may have been used to prop up or separate saggars. The fabric is a light, buff-firing clay similar to that used for the pots themselves.

*Table 4. Summary of details of fired clay*

<b>Context</b>	<b>Type</b>	<b>No.</b>	<b>Wt.</b>	<b>ENV</b>	<b>Notes</b>
0001	Fired clay	3	200	3	Fired clay fragments with finger impressions
0001	Fired clay	2	13	2	Squeezed lump and small pellet
0004	Fired clay	1	9	1	Lump of squeezed fired clay with thumb print
0009	Fired clay	1	13	1	Fired clay with possible finger or rod impression
0009	Fired clay	1	14	1	Flat plate of fired clay
0009	Fired clay	1	7	1	Thumbed lump of fired clay
0009	Fired clay	2	5	2	Pieces of fired clay
0009	Fired clay	1	4	1	Lump of fired clay with impression
0002	Glazed fired clay	1	2	1	Small flattened clay pellet with brown glaze on one side
0002	Kiln furniture	1	69	1	Lump of buff fired clay
0007	Kiln furniture	1	90	1	Clay with finger marks
0007	Kiln furniture	13	285	13	Finger marked and squeezed limps of fired buff clay
0007	Kiln furniture	71	2520	71	Flat strips and plates of fired buff clay; probably parts of the kiln structure
0009	Kiln furniture	1	71	1	Lump of fired, squeezed clay
U/S	Kiln furniture	7	435	7	Hard fired buff clay with finger marks
0009	Object	1	4	1	White glazed rod fragment
	<b>Total</b>	<b>108</b>	<b>3741</b>	<b>108</b>	

## Silkstone and 18<sup>th</sup> century pottery production in South Yorkshire

Silkstone is one of a number of potteries producing slipwares and other 'country pottery' wares known to have been in operation in South Yorkshire in the 18<sup>th</sup> and early 19<sup>th</sup> centuries. Those for which we have archaeological evidence are listed in Table 5.

*Table 5. Archaeologically attested 18<sup>th</sup> century potteries in South Yorkshire*

Site	Date range	Products	Reference
Sheffield Manor	Post 1708– post 1715	Manganese Mottled wares	Beswick, pers. comm., 1978
Midhope / Midhopestones	1720–c.1845	Slipware, Brown Glazed Coarsewares, Redware	Lawrence 1974, Ashurst 1987
Swinton	1745–1768	Slipwares; flatware, hollow ware	Cox and Cox 2001
Silkstone	c.1754–1802	Slipwares, Manganese Mottled wares, Brown Glazed Coarsewares	Brears 1971, Lawrence 1974
Bolsterstone	c.1778–1796	Slipware, Black Glazed Coarsewares	Ashurst 1987

This almost certainly underestimates the numbers of such 'country potteries' which originally existed in the county. Lawrence has noted a number of cases where the earliest phases of production have left little or no trace in terms of the types of wares produced or where sparse mention of 'earthenwares' could relate to slipware, mottled ware or plain glazed earthenwares. With the exception of investigations at the Bolsterstone pottery (Ashurst 1987; 2002) and the early work of Kenworthy at the Midhope Pottery none of the sites has been systematically investigated, although Cox and Cox have published a useful account of the Swinton Pottery (the predecessor to the more famous Rockingham Pottery), based largely upon the documentary evidence and supported with reference to the marked slipware vessels from the site and fragments recovered during excavation (Cox & Cox 2001, Chapter 1).

Assemblages of pottery from Kenworthy's excavations on the site of the Midhope pottery and Dr D. Ashurst's excavations at Bolsterstone are held in Sheffield City Museum. A brief examination of both assemblages was made in order to compare the material with that from Silkstone.

### **Midhope**

The Midhope assemblage consists of four boxes of pottery recovered from the site by Kenworthy prior to its inundation by the Midhope reservoir. The assemblage included a shallow saggar, but the majority consisted of press moulded dishes with slip trailed and trailed and combed decoration. Pie crust and plain rims were both present and the decoration seemed, in general to be somewhat more elaborate than that from Silkstone. Yellow trailed designs on brown backgrounds seemed more common than at Silkstone, but it should be noted that neither assemblage can be taken as entirely representative of the output of the kilns. Mottled wares were noticeable by their absence from the Midhope assemblage and there was only one thrown plate. The sherds were all larger and better preserved than the material from Silkstone and it may be that they had been recovered from a waster dump rather than a working area. The fabric resembled the Silkstone Fabric 1 and may be described as a fine textured orange to pale red sandy ware with some white streaking.

## **Bolsterstone**

The Bolsterstone assemblage represents the accumulation of a number of different pieces of work, undertaken by Dr D. Ashurst at various times (Ashurst 1987; 2002). The assemblage was too large to examine in detail as part of the Silkstone project, but it was clear from a brief scan of the material that a range of material was represented. Trailed and trailed and combed slipware was prominent and appeared to have a fine sandy buff to pale orange fabric with some streaking. This was similar in general appearance to the Silkstone material, although a fuller examination would be required in order to assess the degree of variability. Decoration appeared broadly similar to that documented at Silkstone and included both bi-coloured and tri-coloured trailed slip designs. The majority of sherds appeared to be from press-moulded dishes with relatively few examples of hollow wares. Pie crust rims were common. Mottled wares were generally rare and appeared to be limited to larger utilitarian vessels rather than the mugs that were such a prominent feature of the Silkstone assemblage. Late Blackwares of 18<sup>th</sup> century type were present in significant numbers (cf. Ashurst 1987). Other wares included Brown Glazed and Yellow Glazed Coarsewares. Mixed groups also included later (later 18<sup>th</sup> and 19<sup>th</sup> century) wares. One small box contained coarse saggars, easily distinguishable from the glass crucibles from the same site by their distinctive coarse gritty fabrics.

## **Discussion**

The analysis of the assemblage from Silkstone has allowed the range of fabrics to be characterised and has shed a certain amount of light on the range of vessels manufactured on the site. It is clear however that a range of smaller, thin walled, vessels is poorly represented within the excavated assemblage. Further excavation on other parts of the site is needed in order that larger and more representative assemblages may be recovered.

Regularities have been shown to exist within the assemblage, particularly with the links between particular fabrics and vessel forms, but the significance of these remains unclear. They may relate to variation over time, but it may be more plausible to suggest variation in working practices and in the preparation of particular clay types for particular purposes. A comprehensive programme of scientific analysis is needed in order to determine how far the visible distinctions are indicative of compositional differences and the extent to which these might be related to the working characteristics of the material.

The poor quality of the sample recovered has limited the extent to which definitive statements can be made regarding the links between vessel form and decoration. The broad range of design and decorative elements can be distinguished, but the details remain obscure.

There is nothing in the pottery assemblage which casts any specific light on the precise date range of the industry. The clay pipes deposited with the pottery indicates that pottery production began around 1700, however, the documentary evidence (discussed below) suggests a later start for the industry.



## Historical and documentary evidence for the Silkstone pottery

According to Heather Lawrence (1974), the first mention of a pottery at Silkstone occurs in deeds dated 1754 when potovens, a house and a cornmill are recorded as being owned by James Scott and occupied by John Bailey, Ralph Taylor, Joseph Goldthorpe and Michael Taylor. The estate is mentioned again in 1775 when it was bought by Richard Fenton and the same tenants, minus Michael Taylor, are mentioned again. Land Tax assessments refer to John Taylor, a potter, in 1767 and he is mentioned as a tenant from 1781 to 1812. William Taylor, described as a potter in the 1780s, ran the works from 1812 until 1821. The 1802 militia list mentions a second William Taylor and Edward Taylor (ages twenty-five and thirty-four) as potters. A review of the documentary evidence pertaining to the site by Dr. D. Ashurst (pers. comm.) has revealed a number of conveyances and other documents which refer to the pottery and to potters. These date to the period between 1754 and 1775 and mention specifically potovens in addition to the old glasshouse. There is strong implication that the pottery kilns stood on a different site to that of the glasshouse. The inventory of John Scott, dating to 1746, makes no mention of the pothouse, which tends to suggest that Lawrence's earliest date (1754) lies close to the establishment of the pottery.



*Figure 12. The pottery at Silkstone, 1806, from Nattes Views from Nature (after Brears 1971).*

Lawrence has identified only two extant pieces from the pottery, a large dark red earthenware flagon with dark brown glaze and slip trailed inscription 'PE 1777' (Cawthorne Village Museum) and a cylindrical bottle in a similar fabric with the inscription 'RB 1779' (British Museum cat. no. D110). The latter was made for Richard Bradley and bought from his grand-daughter in 1898.

Peter Brears (1971) also mentions the pottery and notes that John Taylor is buried in Silkstone churchyard together with his wife. He has also reproduced an illustration of the pottery, dated to 1806, taken from Nattes *Views from Nature* (Figure 12) and currently held by the Cannon Hall Museum and Art Gallery, Barnsley, which he describes as 'probably the most complete illustration of an urban pottery in operation'. The clay preparation area, the workshop and a tall multi-flued kiln with its surrounding hovel can all be clearly seen. The picture is reproduced as Figure 24.

## Acknowledgements

Acknowledgements are due to the following for assistance in the preparation of this report; Denis Ashurst, Tom Cromwell, David Dungworth, Chris Evans, Dinah Saich, Keith Miller, Hugh Willmott and Gill Woolrich.

## Bibliography

- Ashurst, D 1987 'Excavations at the 17<sup>th</sup>–18<sup>th</sup> century Glasshouse at Bolsterstone and the 18<sup>th</sup> century Bolsterstone Pothouse, Stocksbridge, Yorkshire'. *Post-Medieval Archaeology* **21**, 147–226
- Ashurst, D 2002 'Pothouse Farm (Bolsterstone Glasshouse)', in: D Saich (Ed.) *Archaeology in South Yorkshire 1998-1999*. South Yorkshire Archaeology Service
- Barker, D 1993 *Slipware*. Shire Album 297. Shire Publications
- Barker, D Unpublished 1 *Slipware* Unpublished notes accompanying an English Heritage professional development course, Potteries Museum, Stoke-on-Trent.
- Barker, D Unpublished 2 *Mottled ware* Unpublished notes accompanying an English Heritage professional development course, Potteries Museum, Stoke-on-Trent
- Beswick, P 1978 'The Sheffield Manor products from the Peacock Inn', in P Borne, T Courtney & P Dixon 'The Peacock Inn, Chesterfield'. *Derbyshire Archaeological Journal* **98**, 47
- Brears, P C D 1971 *The English Country Pottery*. David and Charles
- Cox, A and Cox A 2001 *Rockingham 1745–1842*. Antique Collectors Club
- Cromwell, T & Dungworth, D 2002 Silkstone, South Yorkshire: summary report and assessment of evidence from excavations 2002. Centre for Archaeology Report 91/2002. London: English Heritage
- Cumberpatch, C G 2002 'The pottery', in I Roberts *Pontefract Castle: Archaeological Excavations 1982 –86*. Yorkshire Archaeology 8. West Yorkshire Archaeology Service/English Heritage, 169–226
- Cumberpatch, C G unpublished 'Pottery from the Denaby Pottery, Denaby Main, Conisbrough, South Yorkshire'. Archive report for the University of Manchester Archaeological Unit
- Higgins, D 2003 Clay Tobacco Pipes from Excavations at Silkstone, South Yorkshire. Centre for Archaeology report 91/2003. London: English Heritage
- Lawrence, H 1974 *Yorkshire Pots and Potteries*. David and Charles
- MPRG 2001 *A guide to the classification of medieval ceramic forms*. Medieval Pottery Research Group Occasional Paper No.1

## Appendix 1

### List of pottery recovered from Silkstone 2002

#### Abbreviations

##### *Headings*

WT	Ware Type
No.	Number of sherds
ENV	Equivalent Number of Vessels
Wt.	Weight (grammes)
MT	Manufacturing Technique

Mg	Mug
OV	Open Vessel
P	Pancheon
PI	Plate
T	Tyg
U/ID	Unidentified

##### *Ware Types*

BGCW	Brown Glazed Coarseware
BGW	Black Glazed Ware
BSGSW	Brown Salt Glazed Stoneware
BW	Blackware
CGW	Colour Glazed ware
CSW	Combed Slipware
DMW	Dark Mottled ware
LBW	Late Blackware
MSW	Moulded Slipware
MW	Mottled Ware
PGW	Purple Glazed Ware
PS	Plain Slipware
RW	Redware
SW	Slipware
T&CSW	Trailed and Combed Slipware
TGEW	Tin Glazed Earthenware
TSW	Trailed Slipware
UGREW	Unglazed Red Earthenware
UGW	Unglazed Ware
WGSW	White Salt Glazed Stoneware
YGCW	Yellow Glazed Coarseware
YSW	Yellow Slipware
YW	Yellow Ware
U/ID	Unidentified
?	Uncertain

##### *Manufacturing Technique*

M	Moulded
PM	Press Moulded
T	Thrown
T&C	Thrown and Carved
T&T	Thrown and Turned
U/ID	Unidentified

##### *Part*

B	Base
R	Rim
BS	Body Sherd
H	Handle
S	Shoulder
U/ID	Unidentified

##### *Form*

B	Bowl
C	Cup
D	Dish
FW	Flat ware
HV	Handled Vessel
HW	Hollow ware
Jg	Jug
Jr	Jar

Table 6. Context [0001]

WT	Fabric	No.	ENV	Wt.	Part	Form	MT	Decoration	Notes
CSW	1	1	1	19	BS	D	PM	Tri-coloured trailed and combed slipware	
CSW	1	1	1	5	BS	D	PM	Combed brown slip lines on yellow ground	
CSW	2	1	1	11	R	D	PM	Plain rim, yellow combed slip on brown ground	
CSW	3	3	3	25	BS	D	PM	Tri-coloured trailed and combed slip	
CSW	3	1	1	4	BS	D	PM	Trailed and possibly combed brown slip on yellow	
CSW	3	1	1	8	R	D	PM	Tri-coloured slip with a pie-crust rim	
CSW	4	1	1	10	BS	D	PM	Combed slip-trailed decoration with brown on a yellow ground	
CSW	1 type	1	1	6	BS	D	PM	Bi-coloured trailed slip	Fabric resembles type 1, but is a much darker red than normal
LBW	4	1	1	2	BS	HW	T	Black glaze internally and externally	
LBW	4	1	1	9	H/BS	HW	T	Dull black glaze	
LBW	5	5	5	170	B	HW	T	Black glaze	Glaze ends above base
LBW	5	2	1	112	B/BS	HW	T	Black glaze	Glaze ends above base
LBW	5	13	13	116	BS	HW	T	Black glaze	
LBW	5	7	7	55	H/BS	HW	T	Black glaze	
LBW	5	2	2	10	R	HW	T	Black glaze	Everted rims from thin walled shiny black vessels
LBW	5	1	1	5	R	HW	T	Black glaze	Overhanging rim, thin walled vessel
LBW type	1	7	7	78	B	Mg	T	Black glaze	As Late Blackware but with a softer white fabric
LBW type	4	2	2	11	BS	HW	T	Black glaze externally with yellow glaze internally	
LBW type	4	6	5	79	B	Mg	T	Black glaze	As Late Blackware but with a softer white fabric
MSW	1	1	1	3	BS	D	PM	Moulded relief 'ladder' like decoration under white slip	
MW	1	9	9	76	H	Mg/Jg	N/A	Mottled glaze	Narrow strap handles- jug/mug type
MW	1	3	3	96	B	HW	T	Dark red to brown glaze internally and above base	Glaze shows very little mottling
MW	1	2	2	39	B	Mg/Jg	T	Mottled glaze	Bulbous body above beaded base
MW	3	1	1	3	BS	D	PM	Mottled glazed internally	
MW	4	2	2	6	H	HW	N/A	Mottled glaze	
MW	4	14	13	79	H	Mg/Jg	N/A	Mottled glaze	Narrow strap handles
MW	4	1	1	5	BS	D	PM	Mottled glazed internally	
MW	4	1	1	10	B	HW	T	Mottled glaze	
MW	4	79	78	380	BS	HW	T	Mottled glaze internally and externally	
MW	4	60	60	215	BS	HW	T	Mottled glaze	
MW	4	20	20	71	BS	HW	T	Mottled glaze	Light and dark mottled glaze
MW	4	1	1	2	BS	HW	T	Undecorated	

WT	Fabric	No.	ENV	Wt.	Part	Form	MT	Decoration	Notes
MW	4	10	10	20	R	HW	T	Mottled glaze	Very thin walled vessels of undetermined type
MW	4	4	4	8	R	HW	T	Mottled glaze	Very thin walled vessel (possibly one vessel) with overhanging rim. Figure 3.21
MW	4	1	1	3	R	HW	T	Mottled glaze	?Bowl
MW	4	26	26	337	B	Mg/Jg	T	Mottled glaze	Bulbous body above beaded base
MW	4	19	19	178	BS	PI	T	Mottled glaze internally	
MW	4	2	2	18	R	PI	T	Mottled glaze internally; plain rim	
MW	4	5	5	52	R	PI	T	Mottled glaze internally; pie crust rim	
MW	4	6	6	36	R	PI	T	Mottled glaze	
MW	4	1	1	35	H	U/ID	T	Mottled glaze internally and externally	An unusual type of handle (Horizontal), presumably belonging to a large vessel. Figure 3.20.
MW	5	5	5	65	B	HW	T	Dark red to brown glaze internally and above base	Glaze shows very little mottling
MW	5	42	42	278	BS	HW	T	Dark glazed ware, some mottling	
MW	5	2	2	45	BS	PI	T	Dark glaze	
MW	6	11	11	134	B	HW	T	Dark red to brown glaze internally and above base	Glaze shows very little mottling
MW	6	4	3	44	R	PI	T	Mottled glaze	Thrown plates, stacking scar on rim
MW	?4	1	1	19	B	HW	T	Very shiny honey coloured glaze internally and externally	Very highly fired fabric, apparently type 4 but fired to a temperature approaching stoneware giving a distinctive colour and texture
MW	?4	1	1	8	BS	HW	T	Very shiny honey coloured glaze internally and externally	Very highly fired fabric, apparently type 4 but fired to a temperature approaching stoneware giving a distinctive colour and texture
MW	1 type	16	16	71	BS	HW	T	Mottled glaze	
MW	4 type	2	2	26	H	HW	N/A	Mottled glaze	
MW	4 type	2	2	34	B	HW	T	Mottled glaze	Black glaze internally, mottled glaze externally
MW	5 type	1	1	9	BS	PI	T	Mottled glaze	
MW type	4	2	2	4	BS	HW	T	Dark yellow with black mottling	
MW type	6	1	1	14	H	HW	N/A	Brown glaze ?Mottled	
MW type	6	1	1	2	R	HW	T	Brown glaze internally, unglazed externally	Overhanging rim
SW	1	1	1	8	R	?P	T	Red slip on rim, no glaze	Rounded rim
SW	?4	1	1	2	BS	HW	T	Greenish glaze with irregular patches of black slip	A very thin walled sherd, reduced throughout but with a similar texture to type 4
TSW	1	1	1	2	BS	D	PM	Yellow trailed lines on red-brown ground	
TSW	1	4	4	33	BS	D	PM	Tri-coloured slipware	
TSW	1	5	5	18	BS	D	PM	Brown trailed slip on yellow ground	

WT	Fabric	No.	ENV	Wt.	Part	Form	MT	Decoration	Notes
TSW	1	1	1	2	BS	D	PM	Diffuse trailed slip	
TSW	1	3	3	26	R	D	PM	Tri-coloured trailed slip and a pie crust rim	
TSW	1	3	3	18	R	D	PM	Bi-coloured trailed slip and a pie crust rim	
TSW	1	1	1	15	R	D	PM	Brown trailed slip lines with pie-crust rim	
TSW	3	15	15	68	BS	D	PM	Tri-coloured trailed slip	
TSW	3	1	1	5	BS	D	PM	Brown combed lines on a yellow ground	
TSW	3	1	1	6	BS	D	PM	Yellow trailed lines internally on dark brown glaze	
TSW	3	4	4	19	BS	D	PM	Brown and yellow trailed slipware	
TSW	3	6	2	34	R	D	PM	Tri-coloured trailed slip and a pie crust rim	Probably all the same vessel
TSW	3	3	3	29	R	D	PM	Tri-coloured trailed slip and a pie crust rim	
TSW	3	2	1	11	R	D	PM	Yellow trailed slip on brown ground (single line around rim) and pie-crust rim	
TSW	5	1	1	37	B	D	PM	Yellow ground with blurred brown 'bullseye' design	Unusual design
TSW	6	2	1	4	BS	D	PM	Black slip lines, combed on yellow ground	
TSW	6	2	1	7	BS	D	PM	Yellow trailed lines internally on dark brown glaze	
TSW	6	3	3	21	R	D	PM	Single yellow slip line around rim	
TSW	6	1	1	5	BS	HW	PM	Yellow trailed lines externally on red-brown glaze	
U/ID	U/ID	1	1	1	BS	U/ID	U/ID	N/A	Flake
Waster	U/ID	4	4	33	BS	HW	T	N/A	Overfired with lumps of slaggy material adhering
YG CW type	5 type	5	5	54	BS	P	T	White slip and clear glaze giving a yellow finish internally	
YW type	4	1	1	10	B	HW	T	Yellow glaze internally and externally	Small narrow base, diameter indeterminable
YW type	5	1	1	3	BS	OV	T	Yellow glaze internally	

Table 7. Context [0002]

WT	Fabric	No.	ENV	Wt.	Part	Form	MT	Decoration	Notes
?	1	1	1	13	BS	HW	T	Undecorated	
?	4	1	1	4	B	HW	T	Undecorated	
?	?1 type	1	1	5	BS	HW	T	Undecorated	
?	1 type	1	1	3	B	HW	T	Undecorated	
?	U/ID	1	1	7	BS	HW	T	Undecorated	Odd reduced fabric
?	U/ID	8	8	30	BS	U/ID	T	Undecorated	Flakes and fragments
?MW	1 type	1	1	20	B	HW	T	Dark glaze internally	
CSW	1	7	7	95	BS	D	PM	Combed trailed slipware; brown on yellow	
CSW	1	3	3	35	R	D	PM	Pie crust rim and combed trailed slipware	
LBW type	1	1	1	24	BS	HW	T	Black glaze internally, unglazed externally	
MW	1	1	1	4	BS	HW	N/A	Undecorated	
MW	1	2	1	96	B/BS	?Jr	T	Undecorated	A large diameter vessel with dark streaky glaze, probably too large for a mug
MW	1	1	1	17	B	HW	T	Honey coloured mottled glaze internally and externally	
MW	1	5	5	59	B	Mg/Jg	T	Mottled glaze	Bulbous or globular shaped hollow ware vessels
MW	1	13	13	143	BS	PI	T	Mottled glaze	
MW	1	3	3	50	R	PI	T	Pie-crust rim and mottled glaze	
MW	1	2	1	11	R	PI	T	Pie-crust rim	Pronounced stacking scar around rim
MW	1	7	6	39	R	PI	T	Plain rims	Plain rims but with stacking scars from other plates with both plain and pie-crust rims
MW	4	76	75	250	BS	HW	N/A	Undecorated	Plain body sherds with mottled glaze
MW	4	1	1	2	BS	HW	N/A	Raised ridge around vessel	Over fired
MW	4	3	2	10	H	Mg/Jg	N/A	Undecorated	Narrow strap handle
MW	4	11	11	113	B	?Jg	T	Undecorated	Footed bases with the lower wall profiles suggesting that they were from globular jug or bowl-like vessels
MW	4	1	1	22	B	HW	T	Very dark mottled glaze	Lump of clay adhering to the inside of the base - ?waster
MW	4	1	1	3	B	HW	T	Mottled glaze internally	
MW	4	3	2	20	BS	HW	T	BS with raised ridge around vessel	
MW	4	1	1	2	BS	HW	T	Rilled lines around the vessel	?Mug
MW	4	5	5	10	R	HW	T	Slightly everted rims	
MW	4	1	1	6	R	HW	T	Slightly everted rims	Waster with glaze over broken edge
MW	4	1	1	9	R	Jr	T	Undecorated	Thickened everted rim from a vessel of unidentified type
MW	4	4	4	29	B	Mg	T	Mottled glaze	Straight sided mugs
MW	4	10	10	59	B	U/ID	T	Undecorated	Unidentifiable base fragments - could be mugs or jugs



WT	Fabric	No.	ENV	Wt.	Part	Form	MT	Decoration	Notes
MW	4	4	3	67	B	U/ID	T	Undecorated	Possibly from large mugs or jars
MW	4	1	1	40	B	U/ID	T	Undecorated	Waster with glaze over broken edge; could be a large jug
MW	4	1	1	5	B	U/ID	T	Mottled glaze	
MW	4	2	2	13	BS	U/ID	T	Mottled glaze	
MW	6	1	1	4	R	HW	N/A	Undecorated	
MW	6	2	2	20	BS	U/ID	T	Mottled glaze	
MW	?4	1	1	26	B	U/ID	T	Mottled glaze	Yellowish colour, unlike the normal type 4
MW	1 type	1	1	48	B	?Jr	T	Undecorated	A large diameter vessel with dark streaky glaze, probably too large for a mug
MW	4 type	3	3	13	H	Jg/Mg	N/A	Undecorated	Darker than typical fabric 4, but similar in terms of texture and inclusions
MW	4 type	1	1	6	BS	HW	T	Dark mottled glaze	
MW	4 type	2	2	23	BS	U/ID	T	Mottled glaze	
MW type	1	3	3	75	B	U/ID	T	Undecorated	Fragments of a large flat base or bases with dark mottled glaze internally
PS	1	2	2	19	R	D	PM	Plain yellow slip internally with a pie-crust rim	
T&CSW	1	1	1	46	R	D	PM	Combed and trailed slip design	One of the more complex designs showing both combed designs and blobs of red-brown slip. Figure 3.13.
TSW	1	12	12	46	BS	D	PM	Brown and yellow banded	Considerable variation in width of the bands and lines
TSW	1	1	1	3	BS	D	PM	Small section of curvilinear trailed slip design	
TSW	1	1	1	2	BS	D	PM	Brown slip with curvilinear trailed line	
TSW	1	1	1	4	BS	D	PM	Tri-coloured curvilinear design	
TSW	1	1	1	2	BS	D	PM	Trailed slipware	Narrow brown stripes on yellow
TSW	1	2	2	13	R	D	PM	Pie crust rim and red and brown slip	
TSW	1	2	2	7	R	D	PM	Plain rim with banded slip	
TSW	3	1	1	2	BS	D	PM	Yellow ground with thin brown lines	
TSW	4	1	1	4	BS	D	PM	Brown and yellow banded	
Waster	U/ID	1	1	21	B	HW	T	Undecorated	
Waster	U/ID	1	1	11	B	Mg/Jg	T	Mottled glaze	

Table 8. Context [0003]

WT	Fabric	No.	ENV	Wt.	Part	Form	MT	Decoration	Notes
BSGSW	N/A	1	1	3	BS	U/ID	T	Undecorated	Plain brown stoneware
LBW type	5	1	1	10	H	U/ID	N/A	Undecorated	Lense shaped handle
LBW type	5	4	3	101	B	Jr	T	Undecorated	Beaded base; glazed internally and externally to just above the base
LBW type	5	5	1	19	R	Jr	T	Undecorated	Finer finish than C17th Blackware and with a distinctive overhanging rim
LBW type	5	9	6	41	BS	U/ID	T	Undecorated	
LBW type	5	1	1	4	R	U/ID	T	Undecorated	Slightly everted rim
MW	1	1	1	9	H	U/ID	N/A	Undecorated	
MW	1	1	1	5	BS/H	U/ID	N/A	Undecorated	
MW	1	4	4	10	BS	U/ID	T	Undecorated	
MW	4	1	1	3	BS	U/ID	T	Undecorated	
MW	5	1	1	2	BS	U/ID	T	Undecorated	
SW	5	1	1	1	BS	U/ID	T	Curvilinear trailed slip design	

Table 9. Context [0004]

WT	Fabric	No.	ENV	Wt.	Part	Form	MT	Decoration	Notes
?	4	1	1	9	U/ID	U/ID	U/ID	Undecorated	The object resembles a ring foot base but there is no sign of a vessel wall, mottled glaze on one side. Figure 2.12.
?MW	4	1	1	2	H	Mg/Jg	N/A	Yellow glaze	An unusual yellow glaze -?a variant of the mottled ware
BSGSW	N/A	2	2	13	B/BS	U/ID	T	Undecorated	One ring foot base, one body sherd
CSW	1	4	4	26	BS	D	PM	Tri-coloured combed slip	
CSW	1	2	2	8	BS	D	PM	Bi-coloured slip (red-brown and yellow)	
CSW	1	4	4	33	BS	D	PM	Tri-coloured combed slip	Slightly streaky fabric
CSW	1	2	1	82	R	D	PM	Pie-crust rim with trailed and combed slip	Figure 2.11.
CSW	1	1	1	32	R	D	PM	Pie-crust rim with tri-coloured combed slip	
CSW	1	2	2	28	R	D	PM	Plain knife trimmed rim with combed slip	
CSW	4	1	1	16	R	D	PM	Pie-crust rim with tri-coloured combed slip	
MSW	1	1	1	5	BS	D	PM	Relief moulding internally; concentric rectilinear panels	One sherd with a relatively rare form of decoration
MW	1	6	6	46	BS	U/ID	T	Very dark mottled ware	Unusually dark mottled ware
MW	4	8	8	46	H	Mg/Jg	N/A	Mottled glaze	
MW	4	73	73	259	BS	HW	T	Mottled glaze only	Glazed internally and externally
MW	4	4	4	27	BS	HW	T	Mottled glaze and raised ridges around vessels	Glazed internally and externally
MW	4	4	4	15	R	HW	T	Mottled glaze; one sherd with raised ridge	Glazed internally and externally
MW	4	17	17	169	B/BS	Jg/B	T	Mottled glaze but unglazed on underside of base	Some with stacking scars

WT	Fabric	No.	ENV	Wt.	Part	Form	MT	Decoration	Notes
MW	4	10	10	134	B	Mg	T	Mottled glaze inside and out with raised ridges	Glazed internally and externally
MW	4	35	34	367	BS	PI	T	Mottled glaze	A variety of glaze, mainly mottled but some very dark
MW	4	13	13	79	R	PI	T	Pie-crust rim	Glaze does not reach the rims; one with stacking scar
MW	4	3	1	67	R	PI	T	Pie-crust rim	Mottled ware plate, thrown rather than press moulded. Figure 2.10.
MW	4	20	19	94	B	U/ID	T	Mottled glaze internally	Flat base fragments
MW	4	3	3	13	B	U/ID	T	Undecorated	Small pieces of flat based vessels
MW	4	10	10	48	BS	U/ID	T	Very dark mottled ware	Unusually dark mottled ware
MW	4	1	1	3	BS	U/ID	T	Very dark mottled ware with raised ridge	Unusually dark mottled ware
MW	4	1	1	1	BS	U/ID	T	Undecorated	
MW	4	3	2	57	R/BS	U/ID	T	Mottled glaze	Unusual overhanging rim; vessel form unclear; one sherd with glaze over broken edge
MW	U/ID	1	1	3	BS	U/ID	T	Very dark mottled ware	Overfired
RW type	1	1	1	1	BS	U/ID	T	Undecorated	
TSW	1	1	1	3	R	D	?PM	Pie crust rim and thick brown trailed slip on a yellow ground	Flaked; no underside surviving
TSW	1	5	4	36	BS	D	PM	Red and cream slip giving a yellow and red-brown banded finish	
TSW	1	1	1	6	R	D	PM	Pie-crust rim with red and cream slip giving yellow and brown bands	
TSW	1	1	1	15	R	D	PM	Pie-crust rim with red and cream slip giving yellow and brown bands	Knife rimmed rim
TSW	4	2	1	29	R	D	PM	Pie-crust rim with red and cream slip giving yellow and brown bands	
TSW	4	1	1	9	R	D	PM	Pie crust rim and two raised lines internally; black, brown and red brown slip	Unusual decoration, but the sherd is too small to determine the pattern
TSW	1 type	1	1	8	BS	D	PM	Tri-coloured trailed slip	Pronounced streaking in the fabric
U/ID	U/ID	1	1	1	BS	U/ID	U/ID	Undecorated	Small piece of soft earthenware with slip; unglazed
UGW	1	1	1	21	BS	PI	T	Undecorated	Unglazed fragment of plate

Table 10. Context [0005]

WT	Fabric	No.	ENV	Wt.	Part	Form	MT	Decoration	Notes
MW	1	1	1	6	R	D	T	Mottled glaze, pie crust rim	
MW	4	2	2	24	B	B/Jg	T	Dark glaze	
MW	4	5	5	22	BS	HW	T	Mottled glaze	
MW	4	1	1	15	BS	PI	T	Mottled glaze	

Table 11. Context [0007]

WT	Fabric	No.	ENV	Wt.	Part	Form	MT	Decoration	Notes
?	1	19	19	102	BS	U/ID	T	N/A	Body sherds and flakes - underfired and overfired
?MW	1	1	1	18	B	B/Jg	T	Black glaze internally and externally	Black rather than mottled glaze
?MW	1	1	1	17	BS	PI	T	Undecorated	Unglazed fragment of plate
CSW	1	2	2	32	BS	D	PM	Brown trailed and combed slip lines on a yellow ground	Two sherds chosen as fabric samples and included in the regional type series
CSW	1	46	46	278	BS	D	PM	Brown trailed and combed lines on a yellow ground	
CSW	1	2	2	14	BS	D	PM	Brown combed slip lines on yellow ground	Waster
CSW	1	2	2	14	BS	D	PM	Yellow on brown, combed	
CSW	1	10	10	89	R	D	PM	Brown trailed and combed slip lines on a yellow ground; piecrust rim	
CSW	2	1	1	1	BS	D	PM	Brown combed slip lines on yellow ground	Waster
CSW	3	2	2	9	BS	D	PM	Brown trailed and combed lines on a yellow ground	Two sherds taken for regional type series
CSW	3	3	3	20	BS	D	PM	Brown combed slip lines on yellow ground	Waster
CSW	3	1	1	6	R	D	PM	Brown trailed and combed slip lines on a yellow ground; piecrust rim	Sherd taken for regional type series
CSW	3	1	1	13	R	D	PM	Pie crust rim and tri-coloured slip combed slip design	
LBW type	1	1	1	7	B	B/Jg	T	Very dark glaze internally	
LBW type	4	4	4	34	B	B/Jg	T	Very dark glaze internally	
LBW type	4	3	3	29	BS	PI	T	Very dark glaze internally	Thrown plates
LBW type	4	16	16	59	BS	U/ID	T	Very dark glaze	Hollow wares and flatwares
MW	1	1	1	14	B	B/Jg	T	Honey coloured glaze internally	Beaded base with probable globular body, but too fragmented to determine form
MW	1	4	4	94	BS	PI	T	Mottled and variegated glaze internally	
MW	1	9	9	96	BS	PI	T	Mottled glaze internally	Thrown plates, some with knife trimming externally

WT	Fabric	No.	ENV	Wt.	Part	Form	MT	Decoration	Notes
MW	1	6	6	118	R	PI	T	Mottled glaze ranging from brown to yellow	Distinctive plate rims with stacking scars. Figure 2.3 and 2.4.
MW	1	7	7	137	R	PI	T	Mottled glaze ranging from brown to yellow; pie crust rim	Distinctive plate rims with pie crust rim and stacking scars. Figure 2.5.
MW	1	10	10	96	R	PI	T	Plain rims with mottled glaze internally	Patchy and mottled glaze, some overfired
MW	3	1	1	38	B	B/Jg	T	Mottled glaze internally and externally	Very thick, puddled glaze internally and thick blobs on underside, worn down, perhaps deliberately
MW	4	7	7	35	H	Mg	N/A	Plain lense-shaped handles	Narrow strap profile handles with mottled glaze
MW	4	6	6	57	B	B/Jg	T	Mottled glaze internally and externally	Small beaded bases with ?globular body, but too small to determine the form precisely
MW	4	3	3	15	H	HV	T	Undecorated	Narrow strap mug/jug handles
MW	4	1	1	130	B	Mg	T	Mottled glaze internally and externally with raised ridges around vessel	Slightly splayed base of a tall vessel. Figure 2.6.
MW	4	16	16	94	B	Mg	T	Mottled glaze internally and on external walls, unglazed underside	Slightly splayed bases, sometimes with raised ridges above splayed/beaded base
MW	4	7	7	52	BS	Mg	T	Mottled glaze internally and externally; raised thrown lines around vessel	
MW	4	15	15	39	BS	Mg	T	Mottled glaze internally and externally	
MW	4	3	3	17	H/BS	Mg	T	Mottled glaze internally and externally	Narrow strap-like handles
MW	4	1	1	2	R	Mg	T	Mottled glaze internally and externally	Slightly everted rim
MW	4	1	1	4	BS	PI	T	Mottled glaze	
MW	4	9	9	29	BS	U/ID	T	Mottled glaze	
MW	4	2	2	5	BS	U/ID	T	Yellow glaze on one side, mottled on other	Too small to determine vessel form
MW	4	2	2	2	BS	U/ID	T	Undecorated	
MW	4	1	1	2	R	U/ID	T	Mottled glaze	
MW	U/ID	1	1	15	B	B/Jg	T	Mottled glaze internally and externally	Waster; overfired fabric, glaze over broken edges
MW type	1	6	6	20	BS	U/ID	T	Undecorated	Very small sherds of various kinds of mottled ware
MW type	6	2	2	7	BS	HW	T	Plain red brown finish with only slight mottling	
MW type	6	1	1	3	R	HW	T	Plain red brown finish with only slight mottling	
MW type	U/ID	1	1	6	H	Mg	N/A	Dished profile handle	Unusual red-brown glaze on a fine sandy reddish fabric resembling Fabrics 1 and 4
RW type	7	6	6	15	BS	U/ID	T	Matte reddish glaze internally and externally	An unusual matte reddish glaze, unlike the normal range of material
SW	1	2	2	7	BS	D	PM	Plain yellow slipware	
SW	3	2	2	4	BS	D	PM	Plain yellow slipware	

WT	Fabric	No.	ENV	Wt.	Part	Form	MT	Decoration	Notes
TSW	1	1	1	5	BS	D	?PM	Tri-coloured slip decoration internally	Underside flaked
TSW	1	65	65	248	BS	D	PM	Brown trailed lines on a yellow ground	A large group of sherds showing a range of variation within fabric 1 - buff to orange with occasional grey sherds
TSW	1	11	11	73	BS	D	PM	Wide brown slip trailed lines on a yellow ground; pie crust rim	
TSW	1	2	2	5	BS	D	PM	Brown slip lines on white slip ground; overfired	Waster
TSW	1	6	6	49	BS	D	PM	Trailed slip	Misfired and patchily glazed
TSW	1	1	1	14	BS	D	PM	Curvilinear trailed slip design	Misfired
TSW	1	7	7	61	BS	D	PM	Yellow with trailed brown bands	Rather discoloured with a brownish cast over the yellow
TSW	1	2	2	4	BS	D	PM	Small part of curvilinear design; yellow on brown	
TSW	1	1	1	6	BS	D	PM	Brown slip ground with raised yellow slip curving line	
TSW	1	1	1	1	BS	D	PM	Brown ground with curving slip lines	Overfired
TSW	1	1	1	8	BS	D	PM	Yellow stripes and two blobs on a mottled brown ground	Trailed slipware - part of a larger decoration
TSW	1	2	2	5	BS	D	PM	Thick white slip with thin red-brown lines	
TSW	1	5	5	38	R	D	PM	Brown trailed lines on a yellow ground and a pie-crust rim	Includes buff, orange and grey sherds
TSW	1	4	4	47	R	D	PM	Wide brown slip trailed lines on a yellow ground	
TSW	1	4	4	27	R	D	PM	Pie crust rim with yellow and brown bands	
TSW	1	1	1	15	R	D	PM	Pie crust rim with broad yellow bands over red slip	Slightly unusual, given that the yellow slip is over the brown rather than vice versa
TSW	1	1	1	3	R	D	PM	Yellow ground with raised brown line and pie crust rim	Possibly part of a curvilinear design
TSW	1	1	1	17	R	D	PM	Pie-crust rim with brown trailed linear design on yellow ground; possibly wobbly rectilinear	
TSW	1	1	1	8	R	D	PM	Pie crust rim with double brown line on yellow ground	
TSW	1	1	1	12	R	D	PM	Plain rim with brown line on yellow ground	
TSW	1	1	1	9	R	D	PM	Plain rim with brown slip and thin yellow lines	

WT	Fabric	No.	ENV	Wt.	Part	Form	MT	Decoration	Notes
TSW	1	1	1	11	R	D	PM	Plain rim with brown and yellow trailed slip design	Design not clear
TSW	1	1	1	1	R	HW	T	Dark brown blob on a mottled yellow ground	Very thin walled vessel with a slightly everted rim and a mottled yellow finish
TSW	3	2	2	10	BS	D	PM	Wide brown slip trailed lines on a yellow ground; pie crust rim	Sherd taken for regional type series
TSW	U/ID	2	2	16	BS	D	PM	Brown slip lines on white slip ground; overfired	Waster
U/ID	U/ID	1	1	3	BS	U/ID	PM	Dull red glaze (overfired)	Overfired sherd with glaze approaching the semi-vitrified state
Waster	U/ID	3	3	18	BS	HW	T	N/A	Heavily overfired
YSW	4	2	2	3	BS	HW	T	Yellow with fine combed red-brown slip lines externally	Yellow ware type
YW type	4	1	1	1	BS	HW	T	Plain yellow glaze internally and externally	Yellow ware type

Table 12. Context [0009]

WT	Fabric	No.	ENV	Wt.	Part	Form	MT	Decoration	Notes
?	1	1	1	2				Flat rolled clay plaque with incised lines	Object of undetermined purpose. Figure 3.19.
?	3	1	1	4			U/ID	Marbled light and dark effect produced by variegated clay under glaze	Ball or marble with scar where fired
?	U/ID	1	1	5	BS	HW	T	Undecorated	Dense grey fabric with thin white margins internally and externally
?MW	1	2	1	36	B	Mg	T	Undecorated	Very dark, smooth glaze internally with mottled glaze externally
?MW	U/ID	1	1	11	BS	U/ID	T	Undecorated	Misfired
?MW/ BW type	U/ID	10	10	49	BS	HW	T	Undecorated	Overfired and discoloured to a black blistered finish and dark red fabric
?MW/ BW type	U/ID	1	1	4	R	HW	T	Undecorated	Overfired and discoloured to a black blistered finish and dark red fabric
?MW/ BW type	U/ID	10	10	169	B	Mg/Jg	T	Undecorated	Overfired and discoloured to a black blistered finish and dark red fabric
?MW/ BW type	U/ID	4	4	11	BS	U/ID	T	Undecorated	Overfired
BGCW	BGCW	4	3	66	B	Jr	T	Brown glazed internally and externally	
BGCW	BGCW	1	1	31	B	Jr	T	Undecorated	Mottled brown glaze and a brick-red fabric with occasional dark non-crystalline grit

WT	Fabric	No.	ENV	Wt.	Part	Form	MT	Decoration	Notes
BGCW	BGCW	2	1	103	R	Jr	T	Metallic purple glaze	Distinctive pointed cap and bright orange fabric with moderate quantities of black grit
BGCW	BGCW	3	1	100	R	Jr	T	Blistered brown glaze	Dark red dense fabric
BGCW	BGCW	2	1	41	R	P	T	Blistered brown glaze	
BGCW	BGCW	3	3	52	B	U/ID	T	Brown glazed internally and externally	
BGCW	BGCW	6	6	21	BS	U/ID	T	Brown glazed internally and externally	
BGW	8	6	6	23	B	HW	T	Undecorated	Probable mug bases
BGW	8	8	8	23	BS	HW	T	Black glaze	Some body sherds with black glaze internally and externally, some flakes
BGW	8	1	1	13	H/BS	HW	T	Black glaze internally and externally	Handle stump
BGW	8	1	1	34	B	PI	T	Undecorated	Wheel thrown plate, knife trimmed externally; sample taken for reference collection
BGW	8	1	1	23	R	PI	T	Pie-crust rim and thick black glaze internally	Sample taken for reference collection
BSGSW	N/A	1	1	3	R	?B	T	Undecorated	
BSGSW	N/A	1	1	5	B	U/ID	T	Undecorated	
BSGSW	N/A	3	2	9	B	U/ID	T	Undecorated	
BSGSW	N/A	1	1	1	BS	U/ID	T	Undecorated	
BSGSW	N/A	1	1	1	BS	U/ID	T	Rilled body	
BSGSW	N/A	1	1	3	BS	U/ID	T	Zig-zag stamped design	
BSGSW	N/A	1	1	2	S	U/ID	T	Undecorated	
BW	3	1	1	3	H	HV	N/A	Undecorated	Slightly blistered glaze on a typical dark red Blackware fabric
BW	3	6	6	59	BS	U/ID	T	Undecorated	Typical dark red Blackware fabric - ?locally made; one sherd with handle stump
BW type	4 type	2	1	66	B/BS	Mg	T	Undecorated	Small diameter base (4.3cm) of a tall narrow vessel; the fabric resembles fabric 4 but is a darker pinkish buff colour. Figure 3.18.
BW type	BW	6	6	52	BS	C/T	T	Undecorated	?C17th Blackware
BW type	BW	1	1	9	H/BS	C/T	T	Undecorated	?C17th Blackware
CSW	1	22	22	210	BS	D	PM	Combed slip-trailed decoration with brown on a yellow ground	
CSW	1	4	4	24	BS	D	PM	Thin brown combed lines on yellow	
CSW	1	1	1	10	BS	D	PM	Combed brown trailed slip on yellow ground	



WT	Fabric	No.	ENV	Wt.	Part	Form	MT	Decoration	Notes
CSW	1	9	9	133	R	D	PM	Pie-crust rim with thin brown lines, combed, on a yellow ground	Typical combed slipware dishes
CSW	1	1	1	10	R	D	PM	Narrow brown lines on yellow, combed; plain rim	
CSW	1	12	11	272	R/BS	D	PM	Brown trailed and combed slip lines on a yellow ground; piecrust rim	Two sherds taken for the regional ceramic type series
CSW	2	6	5	133	R/BS	D	PM	Brown trailed and combed slip lines on a yellow ground; piecrust rim	Two sherds taken for the regional ceramic type series
CSW	2	1	1	9	BS	D	T	Thin combed brown lines on a yellow ground	
CSW	3	1	1	4	BS	D	PM	Combed brown slip on yellow slip ground	
CSW	3	1	1	6	BS	D	PM	Yellow combed slip band on brown	
CSW	3	3	2	13	R	D	PM	Combed brown slip on yellow slip ground; pie crust rim	
CSW	3	2	1	10	R	D	PM	Plain rim with very thin brown combed lines	
CSW	1 type	2	2	12	BS	D	PM	Broad combed brown lines	One sherd has an unusually dark red fabric
DMW	4	17	16	45	BS	HW	T	Undecorated	Thin walled, finely made vessels with very dark glaze internally and externally
DMW	4	3	3	8	R	HW	T	Undecorated	Thin walled, finely made vessels with very dark glaze internally and externally
DMW	5	8	8	25	BS	HW	T	Undecorated	Dense red fabric
DMW	5	1	1	1	R	HW	T	Undecorated	Dense red fabric
MSW	1	5	4	105	R/BS	D	PM	Pie crust rim and moulded body with a raised diamond pattern, white slip and raised brown slip lines	One of the very few elaborately decorated vessels in the assemblage. Figure 3.17.
MW	1	1	1	7	BS	U/ID	?M	Unglazed externally, very shiny yellow and brown glaze internally	
MW	1	1	1	13	B	B/Jg	T	Undecorated	Thin base with foot
MW	1	1	1	12	B	B/Jg	T	Undecorated	Dark glaze
MW	1	1	1	15	B	FW	T	Mottled glaze internally	
MW	1	1	1	7	B	Mg	T	Mottled glaze	
MW	1	16	16	268	BS	PI	T	Mottled glaze internally	Knife trimming on the outside of the plates towards the base
MW	1	6	6	23	BS	PI	T	Mottled glaze internally	
MW	1	2	2	81	R	PI	T	Mottled glaze internally	Wheel thrown plates
MW	1	2	2	26	R	PI	T	Mottled glaze internally and shallow pie-crust impressions	Wheel thrown plates

WT	Fabric	No.	ENV	Wt.	Part	Form	MT	Decoration	Notes
MW	1	2	2	83	R	PI	T	Mottled glaze internally	Prominent stacking scars regularly spaced around the rim, possibly from pie crust rimmed dishes. Figure 3.14.
MW	1	3	3	65	R	PI	T	Mottled glaze internally	Stacking scars around rim, showing pattern of pie crust rim
MW	1	1	1	14	R	PI	T	Mottled glaze internally, pie crust rim	
MW	1	3	3	21	R	PI	T	Plain rim with stacking scar	Stacking scars
MW	1	2	2	14	R	PI	T	Unglazed and undecorated	Unglazed sherds
MW	1	1	1	6	R	PI	T	Overfired	Blistered glaze internally
MW	1	1	1	3	BS	U/ID	U/ID	Undecorated	Large metallic glazed blob
MW	4	4	4	25	H	Mg	N/A	Mottled glaze	Narrow strap handle
MW	4	1	1	19	H	Mg	N/A	Mottled glaze; wide strap handle	
MW	4	3	3	33	H	Mg/Jg	N/A	Undecorated	White fabric with dark mottled glaze
MW	4	1	1	8	H	Mg/Jg	N/A	Undecorated	White fabric with dark mottled glaze and may have a layer of red slip under the glaze
MW	4	30	30	148	H	Mg/Jg	N/A	All with mottled glaze, dark and light	Small mug/jug type handles
MW	4	41	41	111	BS	?HW	T	Undecorated	A variety of tones of mottled glaze, but predominantly dark
MW	4	1	1	17	B	?Mg	T	Undecorated	
MW	4	14	14	28	BS	?Mg	T	Mottled glaze	
MW	4	1	1	5	B	?Mg	T	Undecorated	Thin base
MW	4	2	2	23	B	B/Jg	T	Undecorated	One sherd overfired
MW	4	3	3	8	B	HW	T	Undecorated	
MW	4	9	9	32	B	HW	T	Undecorated	Flat beaded bases
MW	4	23	23	88	BS	HW	T	Raised ridges around vessel	
MW	4	11	11	43	BS	HW	T	Plain mottled body sherds	
MW	4	1	1	1	BS	HW	T	Rilled body sherd	
MW	4	1	1	3	BS	HW	T	Undecorated	
MW	4	3	3	12	BS	HW	T	Thrown raised lines around vessel	
MW	4	13	13	44	BS	HW	T	Undecorated	Plain mottled body sherds of varying thickness
MW	4	53	53	140	BS	HW	T	Undecorated	
MW	4	9	9	60	BS	HW	T	Mottled glaze	
MW	4	1	1	2	H/BS	HW	T	Undecorated	Handle stump
MW	4	2	2	7	H	HW	T	Undecorated	
MW	4	10	9	42	R	HW	T	Slightly everted rims	A range of vessel sizes, but all similar rim profiles
MW	4	3	3	7	R	HW	T	Undecorated	
MW	4	3	3	6	R	HW	T	Undecorated	
MW	4	1	1	53	B	Jr/Mg	T	Undecorated	Much larger diameter than the normal mugs
MW	4	16	16	224	B	Jg/B	T	Undecorated	

WT	Fabric	No.	ENV	Wt.	Part	Form	MT	Decoration	Notes
MW	4	3	3	73	B	Mg	T	Raised ridges immediately above base	The fabric is slightly darker than is typical
MW	4	3	2	50	B	Mg	T	Rilled band above base	Typical mug bases
MW	4	13	13	147	B	Mg	T	Undecorated	
MW	4	1	1	13	B	Mg	T	Dark mottled glaze, ridge and groove above base	
MW	4	12	12	90	B	Mg	T	Mottled glaze inside and out	Normal mug type bases
MW	4	8	8	34	B	Mg	T	Mottled glaze externally, yellow glaze internally	Mug bases, including bulbous mugs
MW	4	36	34	181	B/BS/R	Mg	T	Greenish mottled glaze with yellow speckling externally and mottled yellow internally	Appears to be a single vessel (straight sided mug) and some sherds join, but not enough to reconstruct the profile
MW	4	19	19	70	BS	Mg	T	Rilled band around body	Typical body profile with rilled band
MW	4	30	30	88	BS	Mg	T	Dark mottled glaze externally, yellow glaze internally, rilled band around body	Probably all one vessel; includes rilled bands and narrow strap handles
MW	4	20	20	55	BS	Mg	T	Light mottled glaze	
MW	4	15	15	85	H/BS	Mg	T	Mottled glaze	Narrow strap mug/jug handles
MW	4	1	1	57	B/BS	Mg/Jg	T	Raised ridges around body	Mug or jug with a slightly bulbous lower body above beaded base. Figure 3.16.
MW	4	14	12	40	R	Mg/Jg	T	Mottled glaze	Thin, finely made rims
MW	4	3	3	25	R	PI	T	Pie crust rim	Prominent stacking scars
MW	4	1	1	17	B	Mg	T	Rilled band above base	A very small handled vessel, rather poorly finished with puddled glaze in the base suggesting firing at an angle. Figure 2.9.
MW	4	1	1	18	B	Mg	T	Undecorated	Small base (c4.2cm diameter) with foot
MW	4	1	1	6	B	U/ID	T	Mottled glaze externally; very thick dark glaze puddle internally	Very small diameter base with splayed foot
MW	4	6	6	15	BS	U/ID	T	Undecorated	
MW	5	3	3	28	H	Mg/Jg	N/A	Undecorated	
MW	5	7	6	16	R/BS	?Mg	T	Mottled glaze internally and externally	
MW	5	4	1	24	R	HW	T	Mottled glaze; raised ridge around vessel	Figure 2.8.
MW	5	1	1	10	B	U/ID	T	Undecorated	Flat base with raised centre
MW	5	6	6	37	BS	U/ID	T	Mottled glaze	
MW	6	1	1	5	H	Mg/Jg	N/A	Dark mottled glaze	
MW	6	1	1	4	BS	?Mg	T	Undecorated	The fabric is lighter than most examples of type 6
MW	6	4	3	29	BS	?Mg	T	Undecorated	
MW	6	5	5	10	BS	?Mg	T	Undecorated	Fabric colours are lighter than is typical

WT	Fabric	No.	ENV	Wt.	Part	Form	MT	Decoration	Notes
MW	6	1	1	5	R	?Mg	T	Undecorated	Straight sided mug-like vessel with fine rim; the fabric is lighter than most examples of type 6
MW	6	7	7	82	B	Mg	T	Undecorated	
MW	6	2	1	40	B	Mg	T	Ridged profile above beaded base; mottled glaze internally and externally	Straight sided mug base
MW	6	1	1	7	BS	OV	T	Glazed internally only	Unglazed externally
MW	6	1	1	15	B	Mg	T	Undecorated	Small base (c3.8cm diameter) with projecting flange around foot
MW	6	1	1	4	BS	U/ID	T	Undecorated	
MW	6	2	1	10	R	U/ID	T	Undecorated	Plain rim
MW	4 type	2	2	11	H	Mg	N/A	Mottled glaze	
MW	4 type	1	1	15	H	Mg/Jg	N/A	Undecorated	A very long handle, somewhat resembling types found on Blackware
MW	4 type	1	1	6	BS	HW	T	Rilled body sherd	Fabric is red rather than white, as with the normal Fabric 4
MW	4 type	7	7	52	B	Mg	T	Mottled glaze internally and externally	The fabric closely resembles 4 but is a pale orange colour rather than the bright white colour that typifies fabric 4
MW	4 type	7	7	48	H	Mg	T	Mottled glaze	The fabric closely resembles 4 but is a dull red or pale grey colour rather than the bright white colour that typifies fabric 4
MW	4 type	1	1	1	R	Mg	T	Mottled glaze	
MW	4 type	1	1	7	R	Mg	T	Undecorated	Small straight sided vessel with mottled glaze and patches of blistered glaze; overfired
MW	4 type	1	1	6	R	Jr	T	Undecorated	A small round jar with an everted, flat topped rim
MW	4 type	21	21	108	BS	U/ID	T	Dark mottled glaze	The fabric closely resembles fabric 4, but is dark red in colour rather than white/buff
MW	U/ID	1	1	3	H	Mg/Jg	N/A	Undecorated	A small blistered and discoloured overfired vessel
MW	U/ID	1	1	3	H	Mg/Jg	N/A	Dark mottled glaze	Densely tempered fine ware with non-crystalline rock fragments and fine black grit
MW	U/ID	1	1	42	B	Mg	T	Rilled band above base	Overfired with dark blistered glaze and reduced grey fabric, possibly and overfired type 4
MW	U/ID	1	1	2	BS	U/ID	T	Undecorated	
MW type	6	1	1	9	H	HV	N/A	Undecorated	Narrow strap handle, larger than the majority of mug/jug handles
MW type	6	1	1	6	?H	U/ID	N/A	Undecorated	

WT	Fabric	No.	ENV	Wt.	Part	Form	MT	Decoration	Notes
MW type	6	4	4	26	R	?Mg	T	Raised ridges around vessel	A distinctive form and fabric with a red-brown glaze with very little mottling; four sherds removed for regional reference collection
MW type	6	1	1	8	R	HW	T	Straight sided hollow ware vessel	Distinctive brown-red glaze with slight streaking and occasional yellow flecks
MW type	6	2	2	20	B	U/ID	T	Undecorated	
MW type	6	1	1	22	BS	U/ID	T	Undecorated	A much thicker sherd than is normal for this type
MW type	6	1	1	4	BS	U/ID	T	Very shiny glaze internally and externally	
MW type	6	2	2	8	R	U/ID	T	Undecorated	
MW type	4 type	1	1	23	B	OV	T	Thick dark glaze internally, red slip on base externally	
MW type	6 type	4	4	52	BS	?Mg	T	Raised ridges around vessel	A distinctive form and fabric with a red-brown glaze with very little mottling; the fabric is lighter in colour than F6, but lacks the inclusions typical of F4
MW type	6 type	7	6	23	BS	?Mg	T	Undecorated	A distinctive form and fabric with a red-brown glaze with very little mottling; the fabric is lighter in colour than F6, but lacks the inclusions typical of F4
MW type	6 type	1	1	5	H	?Mg	T	Undecorated	A distinctive form and fabric with a red-brown glaze with very little mottling; the fabric is lighter in colour than F6, but lacks the inclusions typical of F4
PGW	6 type	1	1	107	H	Jr	N/A	Undecorated	Narrow strap handle with typical later 17th-18th century metallic purple glaze on a dark orange fabric resembling type 6
RW	CRW	3	1	26	B	?Jr	T	Raised ridges around vessel	Unusual redware form (hollow ware) with a fabric closely resembling that of the pancheon sherds; ?local
RW	CRW	3	3	23	BS	?Jr	T	Undecorated	Unusual redware form (hollow ware) with a fabric closely resembling that of the pancheon sherds; ?local
RW	CRW	1	1	2	H	?Jr	T	Undecorated	Unusual redware form (hollow ware) with a fabric closely resembling that of the pancheon sherds; ?local
RW	CRW	5	5	24	R	?Jr	T	Undecorated	Unusual redware form (jar with slightly everted rim) with a fabric closely resembling that of the pancheon sherds; ?local
RW	CRW	7	7	48	BS	P	T	Undecorated	Pancheon body sherds; the fabric is a fine, even, pale orange with occasional very fine (<0.1mm) red inclusions. There is no evidence that this is a locally made ware

WT	Fabric	No.	ENV	Wt.	Part	Form	MT	Decoration	Notes
RW	CRW	1	1	57	R	P	T	Undecorated	A typical pancheon rim; fabric is a fine, even, pale orange with occasional very fine (<0.1mm) red inclusions. There is no evidence that this is a locally made ware
RW type	6	1	1	4	BS	HW	T	Thick shiny red-brown glaze internally and externally	Bubbled externally
RW type	6	1	1	12	B	Mg	T	Undecorated	
RW type	7	1	1	1	H	HW	N/A	Undecorated	Narrow strap handle; mug or small jug
RW type	7	12	12	42	BS	HW	T	Undecorated	Distinctive matte red glaze
RW type	7	1	1	1	R	HW	T	Undecorated	Distinctive matte red glaze
RW type	7	1	1	2	B	U/ID	T	Undecorated	
SW	1	1	1	6	R	D	PM	Glaze and slip entirely removed; plain rim	Flaked
SW	U/ID	3	3	54	R	D	PM	Plain slipware with a piecrust rim	Overfired, discoloured and starting to blister
TGEW	U/ID	3	3	3	BS	FW	?T	Blue painted decoration on blue white tin glaze	Very flakey glaze
TGEW	U/ID	1	1	1	R	PI	?T	Blue painted decoration on blue white tin glaze	Very flakey glaze
TSW	1	65	65	351	BS	D	PM	Brown lines and bands on yellow ground	Varying widths of bands and lines
TSW	1	12	12	84	R	D	PM	Thin brown lines on yellow ground; pie-crust rims	Range of thickness and spacing of lines and bands
TSW	1	4	4	48	R	D	PM	Thick yellow bands on a brown ground; pie-crust rims	
TSW	1	1	1	7	R	D	PM	Thick brown bands on a yellow ground; pie crust rim	
TSW	1	2	2	46	R	D	PM	Thick brown bands on a yellow ground; pie crust rims	Stacking scars on pie-crust rim; fired face-to-face
TSW	1	5	5	48	R	D	PM	Thick brown bands on a yellow ground; pie crust rims	Some stacking scars
TSW	1	1	1	9	R	D	PM	Yellow and brown combed designs with pie-crust rim	
TSW	1	2	2	7	R	D	PM	Pie crust rim with thin brown lines on yellow ground	
TSW	1	1	1	5	R	D	PM	Tri-coloured bands with pie crust rim	
TSW	1	1	1	7	R	D	PM	Wide brown and yellow bands; plain rim	
TSW	1	1	1	11	R	D	PM	Wide trailed yellow bands on brown ground; plain rim	
TSW	1	5	5	38	BS	D	T	Discoloured trailed slipware	

WT	Fabric	No.	ENV	Wt.	Part	Form	MT	Decoration	Notes
TSW	1	1	1	1	BS	HW	T	Yellow internally with brown and yellow trailed slip externally	
TSW	3	9	9	47	BS	D	PM	Brown lines/bands on yellow ground	
TSW	3	1	1	9	R	D	PM	Tri-coloured slip decoration internally; piecrust rim	Yellow, brown and red-brown trailed design
TSW	3	1	1	9	R	D	PM	Brown and yellow trailed slipware with piecrust rim	
TSW	4	1	1	6	H/BS	HW	N/A	Yellow glaze with thin trailed and swirled brown slip	Applied handle which has broken from the body at the join
TSW	4	1	1	3	BS	HW	T	Yellow glaze inside and out with thin brown trailed slip design	Slip trailing closely resembles that on the handle stump ?same vessel
TSW	1 type	1	1	4	BS	D	PM	Combed and slightly blurred brown and yellow designs	
TSW	2 type	1	1	5	BS	D	PM	Red-brown slip with trailed yellow slip lines	Texture of fabric closely resembles that of 2, but is yellow-buff rather than red in colour
TSW	Waster	4	3	235	BS	D	PM	Bands of slip; discoloured	
TSW	Waster	6	6	45	BS	D	PM	Trailed slip bands	
TSW	Waster	1	1	46	R	D	PM	Pie crust rim and trailed slipware	
U/ID	1	2	1	83	B	?B	T	Dark, discoloured glaze internally	Misfired but fabric is unaffected
U/ID	1	3	3	52	B/BS	D/B	T	Discoloured slip/glaze internally	
U/ID	1	1	1	15	BS	U/ID	T	Undecorated	Flakes
U/ID	1	1	1	7	BS	U/ID	T	Mainly unglazed with one spot of ?accidental glaze	
U/ID	1	1	1	85	B	U/ID	T&C	Undecorated	Unusual pedestal base with the underside knife trimmed / carved. Figure 2.7.
U/ID	3	1	1	9	BS	U/ID	T	Blobs of glaze, possibly accidental	?Misfired
U/ID	U/ID	1	1	4	BS	U/ID	T	Glazed internally and externally	Misfired
U/ID	U/ID	4	4	17	BS	U/ID	T	Undecorated	Heavily overfired and misfired fragments
UGREW	U/ID	2	2	16	BS	U/ID	T	Undecorated	?Intrusive horticultural wares
UGW	1	16	16	53	BS	U/ID	T	Unglazed, undecorated	Various small sherds and flakes; unglazed
UGW	Waster	5	5	74	B/BS	?B	T	Unglazed, no slip	
Various	1	19	19	72	BS	U/ID	T	Undecorated	Small and unidentifiable sherds in Fabric 1
Waster	4	6	5	27	B/BS	HW	T	Undecorated	Blistered glaze
Waster	4 type	2	2	24	B	?Mg	T	Rilled band above base	Discoloured to a dull purple with blistered glaze
Waster	4 type	7	7	65	BS	?Mg	T	Rilled lines around the vessel	Discoloured to a dull purple with blistered glaze and slight deformation

WT	Fabric	No.	ENV	Wt.	Part	Form	MT	Decoration	Notes
Waster	4 type	10	10	60	BS	?Mg	T	Undecorated	Discoloured to a dull purple with blistered glaze and slight deformation
Waster	4 type	1	1	10	B	B/Jg	T	Undecorated	Discoloured to a dull purple with blistered glaze and slight deformation
Waster	U/ID	3	3	44	B	?Jg	N/A	N/A	Heavily burnt with blistered glaze and slag lumps
Waster	U/ID	1	1	13	R	PI	N/A	N/A	Heavily burnt with blistered glaze and slag lumps
Waster	U/ID	16	16	139	BS	U/ID	N/A	N/A	Heavily burnt with blistered glaze and slag lumps
WSGSW	N/A	1	1	1	H	U/ID	N/A	Undecorated	Thin rod handle
WSGSW	N/A	2	1	1	BS	U/ID	T	Fluted body	Shinier finish than normal
WSGSW	N/A	1	1	1	BS	U/ID	T	Undecorated	
WSGSW	N/A	1	1	8	BS	U/ID	T	Rilled band around body	U/ID vessel type
YW type	4	1	1	4	B	?Mg	T	Small beaded base	Yellow glazed internally and externally
YW type	4	1	1	1	R	?Mg	T	Yellow glaze with decorative blob of brown glaze	
YW type	4	2	2	2	BS	HW	T	Undecorated	
YW type	4	1	1	3	R	HW	T	Undecorated overhanging rim	Very thin walled vessel with distinctive overhanging rim. Figure 3.15.
YW type	4	2	2	10	B	Mg	T	Yellow glaze internally and externally	Parts of two narrow diameter bases (c. 4.2cm diameter), presumably from small tall mugs
YW type	4	1	1	2	B	U/ID	T	Yellow glaze internally	
YW type	4	1	1	1	R	U/ID	T	Small sharply everted rim from a very thin walled vessel	Very thin walled, finely made vessel



Table 13. Context [0010]

WT	Fabric	No.	ENV	Wt.	Part	Form	MT	Decoration	Notes
?	N/A	3	3	6		U/ID	U/ID	Undecorated	Pieces of fired clay and heavily abraded pottery
CSW	1	1	1	1	BS	D	PM	Brown combed design on yellow ground	
CSW	1	1	1	2	BS	D	T	Thin brown combed lines on yellow ground	
CSW	3	1	1	10	BS	D	PM	Thin brown slip trailed lines with combing on yellow ground	Streaky fabric
MW	4	3	3	5	BS	HW	T	Dark mottling	
MW	4 type	4	4	5	BS	HW	T	Mottled glaze	
TSW	1	1	1	3	BS	D	PM	Trailed yellow slip line on brown ground	Streaky fabric
TSW	3	3	1	14	BS	D	PM	Thin brown slip trailed lines on yellow ground	Highly distinctive fabric with red and white streaks in the fabric
TSW	3	2	1	5	BS	D	PM	Brown slip trailed lines on a yellow ground	Slip trailed brown lines vary in width - these are wider than others from context [0010]
TSW	3	1	1	3	BS	D	PM	Yellow trailed line on a brown ground	
TSW	3	1	1	1	BS	D	PM	Brown on yellow	

Table 14. Context [0014]

WT	Fabric	No.	ENV	Wt.	Part	Form	MT	Decoration	Notes
BW	5	1	1	1	BS	U/ID	T	Mottled glaze	
MW	4	1	1	1	R	U/ID	T	Undecorated	Small section of rim which could be Cistercian ware
RW	CRW	10	10	71	BS	P	T	Clear glaze on a red fabric	A typical redware pancheon
RW type	CRW	1	1	9	BS	OV	T	Clear glaze on a buff fabric	The form resembles local redwares but the fabric is hard, buff and contains sparse rounded inclusions and some voids

Table 15. Context [0017]

WT	Fabric	No.	ENV	Wt.	Part	Form	MT	Decoration	Notes
BSGSW	N/A	1	1	1	R	U/ID	T	Undecorated	
BSGSW	N/A	1	1	1	B	Mg	T&T	Rilled band above base	
LBW type	6	1	1	2	BS	U/ID	T	Undecorated	
MW	4	1	1	1	BS	Mg	T	Rilled band	
RW	U/ID	1	1	1	BS	U/ID	T	Undecorated	
RW	U/ID	1	1	1	BS	U/ID	T	Undecorated	

Table 16. Context [0018]

WT	Fabric	No.	ENV	Wt.	Part	Form	MT	Decoration	Notes
BSGSW	N/A	1	1	1	BS	U/ID	T	Undecorated	
RW	CRW	3	2	210	B	P	T	Undecorated	The Redware sherds from context 18 may all be from one pancheon
RW	CRW	25	25	365	BS	P	T	Undecorated	The Redware sherds from context 18 may all be from one pancheon
RW	CRW	12	12	402	R	P	T	Undecorated	The Redware sherds from context 18 may all be from one pancheon

Table 17. Context [0022] Site Sub-division 2

WT	Fabric	No.	ENV	Wt.	Part	Form	MT	Decoration	Notes
BGCW	BGCW	1	1	61	B	U/ID	T	Undecorated	Red-brown glaze inside; not a standard Brown Glazed Coarseware
BSGSW	N/A	1	1	26	B/BS	Mg	T&T	Rilled band above base	Thin white margins internally and externally
CGW	1 type	1	1	5	BS	FW	T	Yellow glaze internally, brown glaze externally	A local product?
CSW	1	1	1	5	BS	D	PM	Trailed and combed slip; brown on yellow	Yellow ground with trailed brown slip
CSW	1	1	1	8	BS	D	PM	Trailed and combed slip; thin brown on yellow	
MW	4	1	1	13	R	PI	PM	Brown mottled glaze internally with an unglazed pie-crust rim	Is this a local product
MW	4	1	1	7	B	Mg	T	Rilled band above base	?Local
MW	4	1	1	18	B	Mg	T	Red slip externally, brown glaze internally	
MW	4	2	1	20	B/BS	Mg	T	Raised ridge above base	Mottled glaze internally with a more even brown glaze externally
TSW	5	1	1	20	R	D	PM	Trailed slip and pie-crust rim	Yellow ground with brown linear trailed slip
U/ID	4	1	1	1	BS	U/ID	PM	Green glazed internally	A small overfired sherd in a dull grey fabric with green glaze internally
YSW	1	2	2	18	BS	D	PM	Yellow glaze internally over white slip	A red fabric with the white slip giving a yellow finish internally

Table 18. Context [0035]

WT	Fabric	No.	ENV	Wt.	Part	Form	MT	Decoration	Notes
YW type	4	1	1	1	R	U/ID	U/ID	Undecorated	Very small sherd with a pale yellow glaze with some mottling