

wa 1116
File

Updown, Kent
Anglo-Saxon Cemetery

Textiles

Elisabeth Crowfoot

The fibres of all the textiles but one from this cemetery were replaced by metal oxides; the exception, a fine fragment from a thread-box in a baby's grave, is of flax, but has scraps of silk thread adhering and loose with it, the only silk of this date recovered from an Anglo-Saxon cemetery (see p. 6).

Apart from this flax fragment, there is only one other possible piece of selvedge (Grave 10); as in the majority of textiles woven on the warp-weighted loom the higher count is normally the warp, this has been placed first where counts are given in the catalogue. The direction of spinning twist in the yarns is indicated by the letters S and Z.

Catalogue

Grave 2

1. Iron buckle and plate

On plate, remains of replaced leather, and under this area 2.0 X 1.3 cm replaced textile, Z,Z, tabby, count c.12/12 per cm; yarns well spun but slightly uneven. On underside of buckle ring, leather, and deteriorated patches similar tabby.

Grave 4

4. Iron buckle

Underneath, large area replaced textile in two layers, overall roughly 5.0 X 5.0 cm, Z,Z, tabby, count 17-18/14 per cm; the coarser system has alternate coarse and finer threads, i.e. probably woven with two wefts, pick and pick; cf. Grave 16.7. Replaced grass stems on surface.

3. Iron knife

All over one side, length 9.0 cm, and part of the other, lying in folds, fine replaced textile, Z,Z, tabby, count 16-17/14 per cm; probably the same as on the buckle, though the differences in the weft thread are not so marked in this piece; from the tight folds obviously a soft fabric, ?flax.

On the other side, traces of twill, one system Z spun.

Grave 5

2. Iron buckle and plate

Replaced textile in small fragments on both plate and buckle, the largest 1.8 X 1.7 cm, lying in triple folds, all Z,S, twill, 2/2 (all showing same diagonal) count 11/10-11 per cm, regular spinning and weaving.

Grave 10

4,7. Iron links from chatelaine

On one piece, replaced grasses on top of fragment of fine replaced tabby (see no.6, below) at one end, and at other fragment replaced Z,Z, twill, count c.8/7 on 5 mm, folding round the end of the link; lying across this a fragment 1.5 X 1.0 cm, solid twill, possibly the same, a selvege or braid, surface deteriorated. Z threads on other links.

5. Iron buckle and plate

Deteriorated very small fragment twill, replaced, one system Z.

6. Wood and metal object

Round one end of metal, length c.3.0 cm, fine replaced Z,Z, tabby, count 9/7 on 5 mm (18/14 per cm), same ridged effect by use of coarse and finer threads in weft as in Graves 4.4 and 16.7, though not so marked; the textile lies in folds. Traces of coarser threads on wood.

Grave 12

1. Bronze buckle

On underside, replaced textile patches over most of the plate and under the ring, fine Z,Z, tabby, count 20/19 per cm, ?flax. Loose, small scraps leather from belt or strap.

Grave 13

2. Buckle

Underneath, against plate, replaced leather, then, over area c.8.0 X 2.5 cm, replaced Z,Z, tabby, count 15/14 per cm, thread irregular in both systems. Oh top of this (i.e. nearer to body) small fragments replaced in deteriorated area c.2.5 X 2.0 cm, and near buckle clear area c.1.5 X 1.5, replaced Z,S, twill, count 13(Z)/14(S) per cm, weave rather open and pulled diagonally, regular 2/2 diagonal as far as preserved. Some detached scraps of the tabby weave, in folds.

Grave 1411. Bronze buckle

Replaced area of textile, 0.8 X 1.4 cm, tabby, count 22(11 on 5 mm)/17 per cm, checked, threads 1Z,6S,7Z/8Z,10S,5Z; very fine and even, (fig.1.3.) Fragments against the buckle, mostly leather, some thread traces.

Grave 167. Small bronze buckle

Underside, two layers or folds fine replaced textile, area 0.8 X 1.5 cm, Z,Z, tabby, count 18(9 on 5 mm)/11 per cm; here the closer count is noticeably variable as in Grs.4 and 10, so perhaps this should be the weft; appearance suggests flax.

3. Iron buckle, silver inlay

Mass of folds all round back and most of front of buckle, all appear to be the same fine Z,Z, tabby, count 9/6 on 5 mm; variability of thread gives a slightly striped appearance in some parts, and tightness of folds suggests flax; probably same as on small buckle no.7.

Grave 171. Miniature iron spear

Replaced area textile c.8.0 X 2.0 cm on shaft, Z,Z, coarse 2/2 twill, count 7/4-5 per cm, the closer count thread being noticeably finer than the other, and the weave open.

3. Iron buckle

One side of plate, replaced leather; other side deteriorated replaced textile, Z,Z, probably tabby, finer than twill on no.1.

Grave 204. Iron buckle

Very deteriorated textile areas replaced on top of ring and tongue, Z,Z, tabby, surface poor; underneath textile remains and leather, replaced.

Grave 215. Iron buckle

Underneath, and to one side on top surface, area c.5.0 X 4.0 cm of very deteriorated Z,Z twill, in tight folds; lying across this, on top of the buckle, very fine deteriorated tabby, surface too badly damaged by insects for spinning to be clear.

9. Iron fragment

Underneath, replaced leather. On top, all over area 5.0 X 2.8 cm, replaced textile (a), Z,Z, tabby, count 13/10 per cm, regular spinning and weaving, but fibres deteriorated leaving weave open; lying in folds.

11. Iron fragment

As no.9, leather one side, tabby (a) on other.

12,13 Iron fragments

As nos.9,11; the tabby lies in close folds.

14. Iron buckle with bronze plates

Between plates, replaced leather, and clear tongue of belt through buckle. On top, leather belt coming through, and on top of plate and ring folds textile (b), finer Z,Z, tabby, count 16/13 per cm, weave much closer and finer than (a) on nos.9 etc; best area, 1.5 X 1.0 cm.

19. Iron fragment

On back, coarser tabby, probably (a). On front, areas 3.0 X 1.3, 3.0 X 2.0 cm, textile (c), Z,S, very fine twill, count / per cm, fig.1.1, lozenge 2/2 twill.

20,22,23,24. Iron fragments

Traces and folds of Z,Z, tabby, (a) as on no.9.

Updown

Grave 21 (con.)26. Iron disc

Replaced textile in folds all over both surfaces, tabby; Z,Z, count 18/13 per cm., i.e. (b) as on no.14.

27. Iron fragment

On one side, area 2.2 X 1.2 cm of Z,S, twill (c); underneath, a fragment of tabby (a).

28. Iron rod fragment

All over one surface, area 3.5 X 2.0 cm, folds of twill (c), replaced; on back, fragment of replaced tabby (a) and bunch of Sply threads, possibly from a fringe.

29. Iron rod

Area 3.5 X 1.3 cm, deteriorated, fine Z,S, twill, surface damaged but must be (c).

Loose remains of leather, and two fragments of replaced textile, (a) Z,Z, tabby, count 9/7 on 5 mm, i.e. 18/14 per cm, and (b) Z,Z, tabby, count 13/10 per cm.

Grave 2610. Strap tag

Underside, leather replaced. Other side, over area 4.0 X 2.0 cm, Z,Z, tabby, count 8/8 on 5 mm; thread rather uneven in both systems; a fragment of this shows from the underside beyond the bronze also.

Grave 271. Iron and wood object

Small fragments of two replaced textiles, one Z,S, twill, the other Z,Z, tabby, both too small for counts.

5. Iron buckle

Area all over top of plate and part of ring, c.3.0 X 2.0 cm, surface very deteriorated, replaced fine Z,Z, textile, probably tabby, in which case count c.7/7 on 5 mm, rather loose spinning and open weave, Cf. Grave 21, textile (a).

Grave 283. Bronze buckle

Inside buckle, replaced ^(a) leather. On top surface, on pin, tiny replaced fragment 0.7 X 0.3 cm, tabby, Z,Z, very fine and even, count estimated c.24-26/16 per cm (12-13 on 5 mm/4 on 2.5 mm); probably flax. On under surface, area 1.5 X 2.0, (b) coarser tabby, Z,Z, count 11/10 per cm; some coarser threads, Z, and grass stems replaced on this. On earth from under buckle, all round under pin impression and wider part of plate, the coarser tabby (b), surface confused by grass stems; at narrower end of plate, mass of grass, and under this deteriorated remains same, count 7/6 on 5 mm.

Grave 295. Iron buckle

On top surface, patches replaced textile (a), one clear fragment 1.2 X 0.8 cm, tabby, count 21/10 (taken as 8 on 8 mm) per cm, one thread system Z, the other Z4, S4; other less clear remains on top of pin and ring of buckle (see no.11).

11. Iron belt plate

On largest piece, at back of body, patches of replaced textile, clearest 1.2 X 1.0 cm, (a) tabby, count 20/10 per cm, close system all Z spun, looser system 5Z, 5S, S thread slightly coarser, i.e. a fabric probably with coloured stripes (Fig.1.2); the other fragments all come from the same weave, but are too deteriorated for more than the Z spinning of the close system to be seen.

Grave 29 (con.)

7. Pair of bronze plates

Among debris preserved by bronze, fragments deteriorated Z,Z, tabby, count c.14/15, probably (b), area c.2.2 X 1.6 cm, surface poor; underneath, coarser threads. One fragment of (a), as on nos.5,11, 0.4 X 0.9 cm, one system close Z, the other 5Z,3S, count estimated c.20/12 per cm. (c) Much coarser, replaced, Z,Z, as far as can be seen tabby, count 4/3 on 5 mm.

On the plates, impressions, lines going lengthwise of plates (see below).

8. Double bronze belt plate

Front of one half-plate, replaced area 1.3 X 1.8 cm fairly clear, weave (b), Z,Z, tabby, count 14/12 per cm; slight frizzing of fibres here suggests this is wool. In debris under plates, replaced fragments (b). Back of other half-plate, similar parallel lines to those on 7, replaced, ?leather, lines run across plate; front, tiny fragment tabby, ?(a).

10. Double bronze belt plate

Front of one half-plate, replaced area 3.6 X 1.4 cm, (b) Z,Z, tabby, count 15/11 per cm, even spinning and weaving. Deteriorated fragments wood and leather and some coarser threads, cf.(c) on no.7. Back of other half-plate, parallel lines going lengthwise on plate, over whole width, probably replaced leather; very thin detached fragments; fibres ?Z visible in lines. Probably tooling on leather, as a tablet-weave, which could leave similar lines, would not run in the other direction (crosswise) on no.8. See Appendix 2, p. .

Grave 34

2. Bronze thread box

Tiny fragment, flax, woven area 0.7 X 0.3 cm, lying double, with longer ends of threads protruding in warp and weft. 6 threads in ?warp direction, soft, Z,Sply, 7 in ?weft direction, fine Z flax, tabby weave; the appearance, and the plyed ?warps suggest this may be from a tubular selvedge; otherwise it is a tiny scrap folded down the middle. One S spun silk thread runs in the same shed as a flax one at one torn end of the piece; a small tangle of detached threads include some Z fine flax, others S fine silk; all fibres are near white. See Appendix 1, p. .

Grave 36

8. Links of chatelaine

One side, area c.2.0 X 0.8 cm, replaced, very loosely lying Z threads with other Z threads interlacing here and there, possibly from tabby weave; plyed threads lying across, possibly fringe, possibly tablet twists unravelling, L.0.7 cm, W.area 0.15 cm; all threads seem to be replaced, but some areas are stained blue.

9,10. Links of chatelaine

On 9, traces coarse Z threads as on 8, and fine Z threads. On 10, underneath, some coarse threads, Z; on other side replaced fine Z,Z, tabby patches, in layers, all along the piece, count 8/6 on 5 mm.

6

As mentioned above, in all the textiles from this cemetery but one the fibres have been replaced by metal oxides, but the exception - fine fragments from a thread box in an infant burial, Grave 34.2 - is of outstanding interest as it includes the only silk threads so far identified from an early Anglo-Saxon site (Appendix 1). The box contains only a fragment of flax tabby weave, possibly from its appearance and its plyed warps part of a tubular selvedge (Pl.), and a small bunch of flax threads from the weave mixed with 3 spun silk threads. One of these is preserved in position in the weave, run into the same shed as a flax weft, and it seems likely the silk was a decoration on the original linen cloth or garment; both yarns are still nearly white, and show no signs of dyeing.

Fragments of fine material have been found in these thread-boxes from a number of other sites - tiny pieces of fine wool twill with embroidery in coloured wools, loose threads, and two linen fabrics, one a broken diamond, the other a tabby weave, from boxes at Kempston, Bedfordshire; a scrap of fine wool tablet-weave and loose plyed yarns in green and brown from Sibertswold, Kent; similar plyed woollen threads, blue, red, yellow and black, and a ball of flax yarn, from Uncleby, Yorkshire; linen and wool tabby weaves from Marine Drive, Dunstable; and possible flax threads from Polhill, Kent. It has been suggested that these scraps might have been hoarded for future use (1), but some of them are too small for any obvious purpose, and it seems more likely that they were kept for sentimental reasons, or, considering their general high quality, as indications of the owner's standing. The inclusion of the silk scraps in the baby's grave goods suggest that these were intended to indicate the high status of the child's family.

1. E. Crowfoot, "Textile fragments from Polhill" in Brian Philp, Excavations in West Kent 1960-1970 1973, pp.202-203.

Apart from this so far unique find, the textile material from the Updown cemetery is interesting for another reason. Of seventeen graves in which identifiable textile remains have been found, all but three contain male burials. The fabrics in all of these are replaced, but they are unusually clear for fibres preserved by contact with iron, with the result that here we have identifiable material from men's burials, which usually yield very little evidence.

Twill weaves The fragments of twill are very small, all four-shed (2/2) constructions. Three (Graves 10, 21.5, and 17) have Z spinning in both thread systems, and four (Graves 5, 13, 21.19 and 27) Z spinning in one system (warp) and S in the other (weft). This combination often indicates a chevron or diamond design in the weave, but in only one grave is enough clearly preserved to show that this was the case here at Updown (Grave 21, fig.1.1); the pattern here is a broken lozenge, similar to finer examples from Sutton Hoo and Broomfield Barrow (2). Fragments with the same centre to the lozenge, though repeating on different numbers of threads, have been found from other Anglo-Saxon cemeteries (3), and there are numerous earlier and later Scandinavian examples. The weave is known in both flax and wool, though the use of the two spinning directions here indicates the latter. Recent tests on broken lozenge twills from Sutton Hoo, Broomfield and Ganton Wold suggest that these were sometimes woven with different colours in warp and weft, a practice which throws up the diamond pattern.

2 The Sutton Hoo Ship Burial, v.III, Chapter IX, SH 1 and 12, B 2.

3 op.cit., SH 9, B 1; E.Crowfoot in R.R.E.Davidson & L.Webster, The Anglo-Saxon burial at Coombe, Kent, Med.Arch. XI, 1967, fig.7; E.Crowfoot in P.J.Tester, Excavations at Fordcroft, Orpington, Arch.Cant. LXXIV, 1969, 51; Mucking, Essex; Dover; Fonaby; Weibek Hill, Irbby; Sewerby; unpublished.

8

Tabby weaves Fragments of tabby weave come from fifteen graves, three of which (Graves 21, 28 and 29) each include at least two different fabrics of this type. All are Z spun throughout, with the exception of two in which the combination of groups of S and Z spun threads produces striped or checked patterns. In Grave 14 just enough is preserved to show that here the weave had stripes of different numbers of threads in both systems, but insufficient to show if this was from a plaid pattern, or if the variation was simply caused by the checks being measured by eye to correct the different spinning of the two threads (fig.1.3). The fragments from Grave 29 are all too small to show if in this case the weave was checked, or only striped (fig.1.2); their position suggests they may come from a cloak. A number of replaced textiles with similar stripes and checks indicated by Z and S threads have been found from Worthy Park, Hants (Grave 75.1), Finglesham, Kent (Graves 8, 169) and Mucking, Essex (Graves 448, 975). The counts in the Updown pieces are fine, of similar quality to those at Finglesham, but not so fine as to suggest the S spun silk threads of Grave 34.

In three tabbies (Graves 4, 10, 16) the unevenness of the probable weft thread, producing a ridged appearance, suggests that the weavers were working with two different wefts (pick and pick) of which one was slightly finer than the other. The width of the warp-weighted loom, on which two women often wove together, would have encouraged this practice (4).

As in other Kentish cemeteries, Finglesham and Dover, the proportion of tabby weaves to twills is higher than in the Anglian cemeteries. In the Updown graves the appearance of many of the tabbies suggests flax (Graves 2, 4, 10, 12, 16, 21(b), 28), but since most of these ~~come~~ are from the underside of buckles in a belt position it is likely they come from garments, not shrouds; very similar fine tabbies were noted in men's graves at Finglesham, again mostly on objects from the waist position.

Belts Remains of belt fragments wherever preserved suggest leather; there is no evidence of woven belts. In Grave 29 traces of leather could be found in crystalline remains on bronze plates; these showed parallel lines, running lengthwise on some plates and across on others, suggesting perhaps that the surface of the belt or strap had a tooled pattern (Appendix 2, p.).

4 Marta Hoffmann, The Warp-weighted loom, 1964, p.44, fig.130.

9

The spinning and weaving from this cemetery, as far as can be judged from replaced material, was of very good standard, and it is perhaps legitimate to suggest that the preponderance of light fabrics, and the all-important presence of silk, are due to the Frankish connections of the ruling family in this area, to whom the occupants of the cemetery were probably related.

Appendix 1

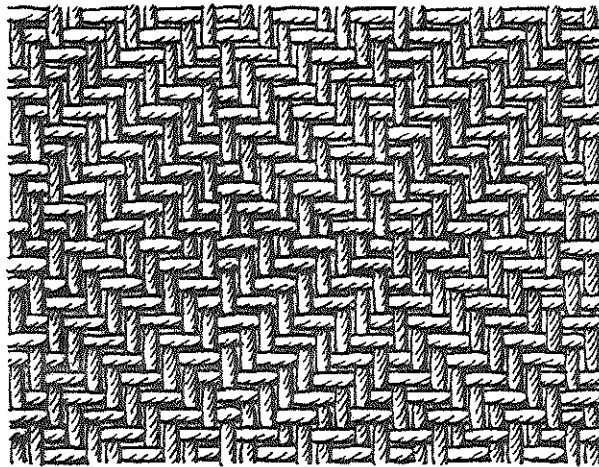
Fibre examinations by H.M.Appleyard, F.T.I.

1. Sample from loose threads, Grave 34 threadbox: These threads appear to be silk, in general they seem to be fairly well-preserved, even though there is quite a bit of deposit on them.
2. Sample of Z spun threads, warp and weft: These are both clearly vegetable, and have the characteristics of flax.
3. S threads, loose, and from that run into weave: These are both fine silk: they are very light in colour, some are badly degraded and there is a lot of mineral deposit.

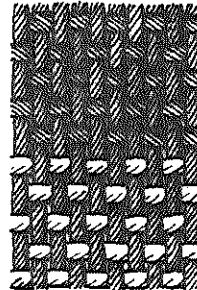
Appendix 2

Examination of fragments from Grave 29, belt plate 10

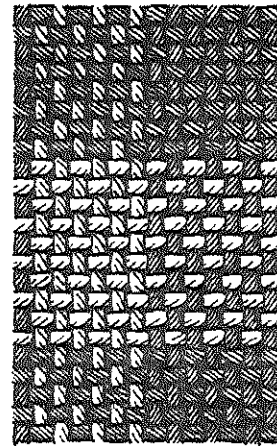
Mr. J.H. Thornton (Northampton College of Technology; consultant, Ancient Monuments Laboratory) examined these, and reported "There is a suspicion of leather on the green (bronze) side, but the crystalline deposits everywhere predominate." At his suggestion X-ray analysis was carried out by Miss Glynis Edwards (Ancient Monuments Laboratory); she reported that the piece was similar to other pieces of textile and leather sitting directly on top of bronze, where the corrosion products do not seem to replace the organic material, just to coat the fibres, and the bacteriostatic effect protects them. The piece has the appearance of wood, with a layer of textile or leather on top of this, and deposits of bronze corrosion on top of that.



1



2



3

- Updown. Fig.1
Broken
1. Lozenge twill, Grave 21 (c)
2. Striped tabby, Grave 29 (a)
3. Checked tabby, Grave 14

Updown, KentTextile Catalogue

Note: The abbreviation "replaced" is used for "fibres replaced by metal oxides". The spinning direction of yarns is indicated by the letters Z and S, the probable warp thread being placed first. Overall measurements of best fragments are given in cms., and weave counts in threads per 1 cm, except where otherwise stated.

<u>Grave</u>	<u>Object</u>	<u>Position</u>	<u>textile Fibre</u>	<u>Spin</u>	<u>Weave</u>	<u>Count</u>	<u>Measurement</u>	<u>Comments</u>
2	1.Fe buckle	on plate & ring	replaced	Z/Z	tabby	c.12/12	2.0 X 1.3	under replaced leather, ?belt
4	4.Fe buckle	underneath	(a)replaced	Z/Z	tabby	17-18/14	c.5.0 X 5.0	2 layers; ?weft alternate coarse & fine, ?pick & pick (Cf.Grs.16,10)
	3.Fe knife	one side, to other	(a)replaced	Z/Z	tabby	16-17/14	L.9.0	probably (a), tight folds, ?flax; difference in ?weft not so marked
		other side	(b)replaced	Z/?	twill	-	-	traces
5.	2.Fe buckle	plate & ring	replaced	Z/S	2/2 twill	11/10-11	1.3 X 1.7	triple folds; regular spin & weave
10.	4,7. Fe links, chataleine	on top round end link	(a)replaced (b)replaced	Z/Z Z/Z	tabby 2/2 twill	- 8/7 on 5mm	- 1.5 X 1.0	very solid fragment, ?selvedge of twill or braid, surface deteriorated
	5.Fe buckle		?(b)replaced	Z/?	twill	-	-	deteriorated
	6.Wood & metal	metal end	(a)replaced	Z/Z	tabby	9/7 on 5mm	L.c.3.0	ridged pick & pick as in Gr.4, folds; coarser Z threads on wood
12.	1.Ae buckle	underside	replaced	Z/Z	tabby	20/19	-	small patches; appearance ?flax
13.	2.Buckle	under plate	(a)replaced	Z/Z	tabby	15/14	c.8.0 X 2.5	scraps, folds, thread irregular; lying over replaced leather
		on top	(b)replaced	Z/S	2/2 twill	13/14	c.2.5 X 2, 1.5 X 1.5	weave open, pulled
14.	11.Ae buckle	on metal	replaced	Z, S/Z, S	tabby	22(11/17 On 5mm)	0.8 X 1.4	fine, even; check 12, 6S, 7Z/8Z, 10S, 5Z (fig.1.3)
16.	7.Ae buckle	underside	(a)replaced	Z/Z	tabby	11/18(9 on 5mm)	1.5 X 0.8	2 layers or folds; closer count three varies, ?pick & pick (Grs.4, 10)
	3.inlaid buckle	round back & front	?(a)replaced	Z/Z	tabby	6/9 on 5 mm	-	many folds, appearance suggests flax
17.	1.miniature spear	on shaft	(a)replaced	Z/Z	2/2 twill	7/4-5	c.8.0 X 2.0	close ?warp finer, weave open
	3.Fe buckle	side of plate	(b)replaced	Z/Z	?tabby	-	-	traces, finer than (a)
20.	4.Fe buckle	top of ring	replaced	Z/Z	tabby	-	-	deteriorated. Leather underneath

<u>Grave</u>	<u>Object</u>	<u>Position textile</u>	<u>Fibre</u>	<u>Spin</u>	<u>Weave</u>	<u>Count</u>	<u>Measurement</u>	<u>Comments</u>
21.	5. Fe buckle	under & side	?(a)deteriorated	Z/Z	twill	-	c.5.0 X 4.0	tight folds, surface damaged
		on top	?(b)deteriorated	-	tabby	-	-	surface covered insect pupae
	9,11,12,13. Fe fragments	on top	(b)replaced	Z/Z	tabby	13/10	5.0 X 2.8	folds, weave open, damaged;
		underneath						leather replaced on 9,11
	14. Fe buckle, Ae plates	top of plate & ring	(c)replaced	Z/Z	tabby	16/13	1.5 X 1.0	much closer than (b); replaced leather between plates
	19. Fe fragment	back	?(b)replaced	Z/Z	tabby	-	-	
		front	(d)replaced	Z/S	2/2 broken diamond twill	/	3.0 X 1.3, 3.0 X 2.0	(fig.1.1)
	20,22,23,24. Fe fragments		(b)replaced	Z/Z	tabby	-	-	traces, as on 9 etc.
	26. Fe disc	both surfaces	(c)replaced	Z/Z	tabby	18/13	-	in folds all over
	27. Fe fragment	one side	(d)replaced	Z/S	br.diamond twill	-	2.2 X 1.2	
			(b)replaced	Z/Z	tabby	-	-	scrap underneath (c)
	28. Fe rod	one surface	(d)replaced	Z/S	br.diamond twill	-	3.5 X 2.0	folds
		other side	(b)replaced	Z/Z	tabby	-	-	with bunch Sply threads, ?fringe
	29. Fe rod		(d)replaced	Z/S	br.diamond twill	-	3.5 X 1.3	surface deteriorated
		detached	(c)replaced	Z/Z	tabby	(18/14)9/7 5 mm	-	loose scraps with leather
			(b)replaced	Z/Z	tabby	13/10	-	
26.	10. strap tag	top side	replaced	Z/Z	tabby	8/8 on 5 mm	4.0 X 2.0	thread uneven both systems
		underside						fragment same tabby under leather
27.	1. Fe & wood		(a)replaced	Z/S	2/2 twill	-	-	tiny scraps
			(b)replaced	Z/Z	tabby	-	-	tiny scraps
	5. Fe buckle	top of plate & ring	?(b)replaced	Z/Z	?tabby	c.7/7 on 5 mm	c.3.0 X 2.0	fine, loose spin, open weave, cf. Gr.21 (b)
28.	3. Ae buckle	top surface, pin	(a)replaced	Z/Z	tabby	(24-26/16) taken	0.7 X 0.3	very fine even weave, ?flax
						12-13 5mm/4 on 2.5mm		
		under surface, & on earth under	(b)replaced	Z/Z	tabby	11/10	1.5 X 2.0	clear area; coarser Z threads, & deteriorated remains
29.	5. Fe buckle	top	(a)replaced	Z/Z,S	tabby	21/10(8 8mm)	1.2 X 0.8	stripes ?weft, Z4,S4
	11. Fe belt plate	back of body	(a)replaced	Z/Z,S	tabby	20/10	1.2 X 1.0	?weft Z5,S5, S coarser (fig.1.2)
	7. Ae plates	in debris round	?(b)deteriorated	Z/Z	tabby	c.14/15	c.2.2 X 1.6	surface poor; coarser threads below
			(a)replaced	Z/Z,S	tabby	est.20/12	0.4 X 0.9	?weft Z5,S5
			(c)replaced	Z/Z	?tabby	4/3 on 5 mm	-	much coarser threads. Lines on plates, see 10.
	8. Double Ae plate	half front	(b)replaced	Z/Z	tabby	14/12	1.3 X 1.8	fibres raised, i.e.wool; tiny scrap
								(a); raised lines on plate
	10. Double Ae plate	half, front	(b)replaced	Z/Z	tabby	15/11	3.6 X 1.4	deteriorated leather, coarser threads
		other half	replaced	?Z	-	-	-	parallel lines in leather, Z fibres visible, see App.1. p.

<u>Grave</u>	<u>Object</u>	<u>Position textile</u>	<u>Fibre</u>	<u>Spin</u>	<u>Weave</u>	<u>Count</u>	<u>Measurement</u>	<u>Comments</u>
34.	2. Ae threadbox, miniature	inside box	flax/flax, silk	Z, Sply/Z, S	tabby	c.9-10/23 (6/7 threads)	0.7 X 0.3	tiny scrap, folded or perhaps from tubular selvedge; 1 silk thread in same shed as 1 flax near torn end, or sewing(p.) tangle detached Z flax, S silk threads (App.1.p.)
36.	8,9. Chatelaine, links	one side	replaced	Z/Z Z, Sply	?tabby -	- -	c.2.0 X 0.8 -	very loose threads, ?weave threads lying across, ?fringe
	10. Chatelaine links	one side underside	replaced replaced	Z/Z Z	tabby -	8/6 on 5 mm -	- -	patches in layers, all along coarse threads