



Historic England



Humber Field Archaeology
Archaeological Consultants and Contractors

Historic Landscape Characterisation of the East Riding of Yorkshire and Kingston- upon-Hull

Volume 2: Data Appendices

Lisa M. Wastling and Richard George

Discovery, Innovation and Science in the Historic Environment



Historic Landscape Characterisation of the East Riding of Yorkshire and Kingston-upon-Hull

Volume 2: Data Appendices

Lisa M. Wastling and Richard George

© Humber Field Archaeology and Historic England

ISSN 2059-4453 (Online)

The Research Report Series incorporates reports by the expert teams within the Investigation & Analysis Department of the Research Group of Historic England, alongside contributions from other parts of the organisation. It replaces the former Centre for Archaeology Reports Series, the Archaeological Investigation Report Series, the Architectural Investigation Report Series, and the Research Department Report Series.

Many of the Research Reports are of an interim nature and serve to make available the results of specialist investigations in advance of full publication. They are not usually subject to external refereeing, and their conclusions may sometimes have to be modified in the light of information not available at the time of the investigation. Where no final project report is available, readers must consult the author before citing these reports in any publication. Opinions expressed in Research Reports are those of the author(s) and are not necessarily those of Historic England.

For more information contact Res.reports@HistoricEngland.org.uk
or in writing to:

Historic England, Fort Cumberland, Fort Cumberland Road, Eastney, Portsmouth PO4 9LD

CONTENTS

APPENDIX A: THE CLASSIFICATION OF HLC CHARACTER TYPES	1
A.1 Introduction	1
A.2 Broad Type Categories	1
A.3 Maps	3
A.4 HLC Character Sub-type Categories for Each Broad Type	8
APPENDIX B: CHARACTER AREA ANALYSIS REPORTS AND PIE CHARTS	39
B.1 Character Area 1 – SE Vale of York North	39
B.2 Character Area 2 – SE Vale of York South	43
B.3 Character Area 3 – Humberhead Levels and Walling Fen	47
B.4 Character Area 4 – Goole Fields	51
B.5 Character Area 5 – Western Wolds Dry Valley	54
B.6 Character Area 6 – Western Wolds Limestone Escarpment	57
B.7 Character Area 7 – High Wolds Plateau	60
B.8 Character Area 8 – The Great Wold Valley	64
B.9 Character Area 9 – Eastern Wolds Dip Slope	67
B.10 Character Area 10 – The River Hull Valley	71
B.11 Character Area 11 – Central Holderness	75
B.12 Character Area 12 – Holderness Coastal Strip	79
B.13 Character Area 13 – South Holderness Alluvial Plain	83
B.14 Character Area 14 – Sunk Island and Cherry Cobb	85
B.15 Character Area 15 – Hull and Suburbs Urban Area	87

APPENDIX A: THE CLASSIFICATION OF HLC CHARACTER TYPES

A.1 Introduction

The process of devising character types for the project was initiated by an observation of types listed in Using Historic Landscape Characterisation (Clark et. al. 2004) and those which had been utilised by previous HLC projects. The adjoining projects of North Yorkshire and Lincolnshire were considered in particular.

As outlined in Volume 1 (section 3.1), the decision was taken to enable the East Riding of Yorkshire and Hull HLC to be broadly comparable with that of Lincolnshire in the hope that it would enable ease of wider regional study.

The character types ultimately utilised were mainly based on those used at Lincolnshire with additions identified at the beginning of the project and also during the polygonisation process as specific types of landscape character were encountered.

Classification used was hierarchical. The Broad Type forms the basic classification, which is sub-divided into a number of narrower Character Types. Each polygon is ascribed both a Broad and Character Type.

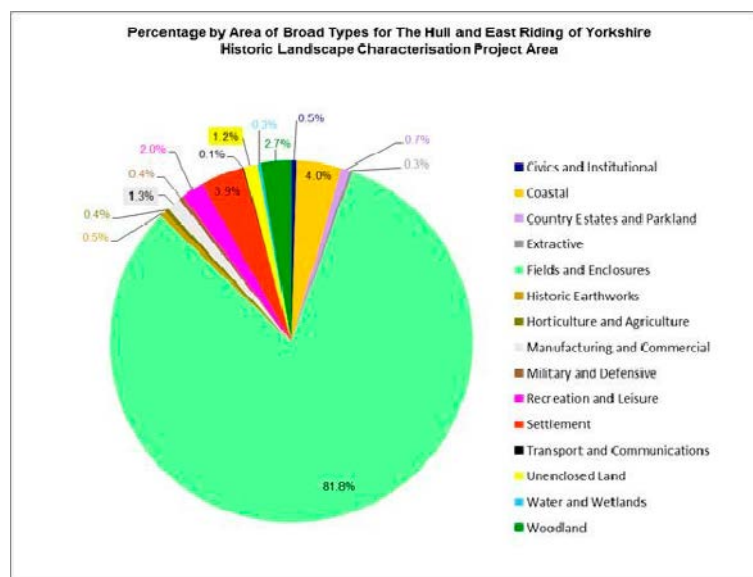
A.2 Broad Type Categories

Fifteen Broad Type categories were used, as set out below.

BROAD TYPE	CODE	SCOPE NOTE
Civics and Institutional	CIV	Public buildings such as schools, hospitals and religious buildings. Also cemeteries.
Coastal	COA	Coastal landscape types above mean high water and sea defences.
Country Estates and Parkland	CEP	Country houses and their associated estates and subsidiary buildings.
Extractive	EXT	Land that is being or has been used for the extraction and processing of mineral products, stone and peat.
Fields and Enclosures	FIE	Land that has been enclosed from an area of open ground, primarily of agricultural use.
Historic Earthworks	HEA	Historic earthworks visible as part of the modern landscape.
Horticulture and Agriculture	HAA	Land used for horticultural and agricultural purposes, including orchards, allotments and nurseries.
Manufacturing and Commercial	MAC	Areas of industrial manufacturing and commercial activity. This type also includes supporting facilities, such as car parks and stockpiles.
Military and Defensive	MIL	Land and buildings used by the armed forces.
Recreation and Leisure	RAL	Recreational space for public use and leisure facilities.

BROAD TYPE	CODE	SCOPE NOTE
Settlement	SET	Areas where people currently live, or have lived in the past. Some elements of local commercial character will be included, such as shops beneath integral dwellings.
Transport and Communications	TAC	Areas associated with transport and communication routes; such as petrol stations and junctions on a motorway.
Unenclosed Land	UNE	Land that has not been enclosed or improved. Typically found as a previous Broad Type.
Water and Wetlands	WAW	Areas
Woodland	WDL	All blocks of woodland of around 0.5 ha or above in size.

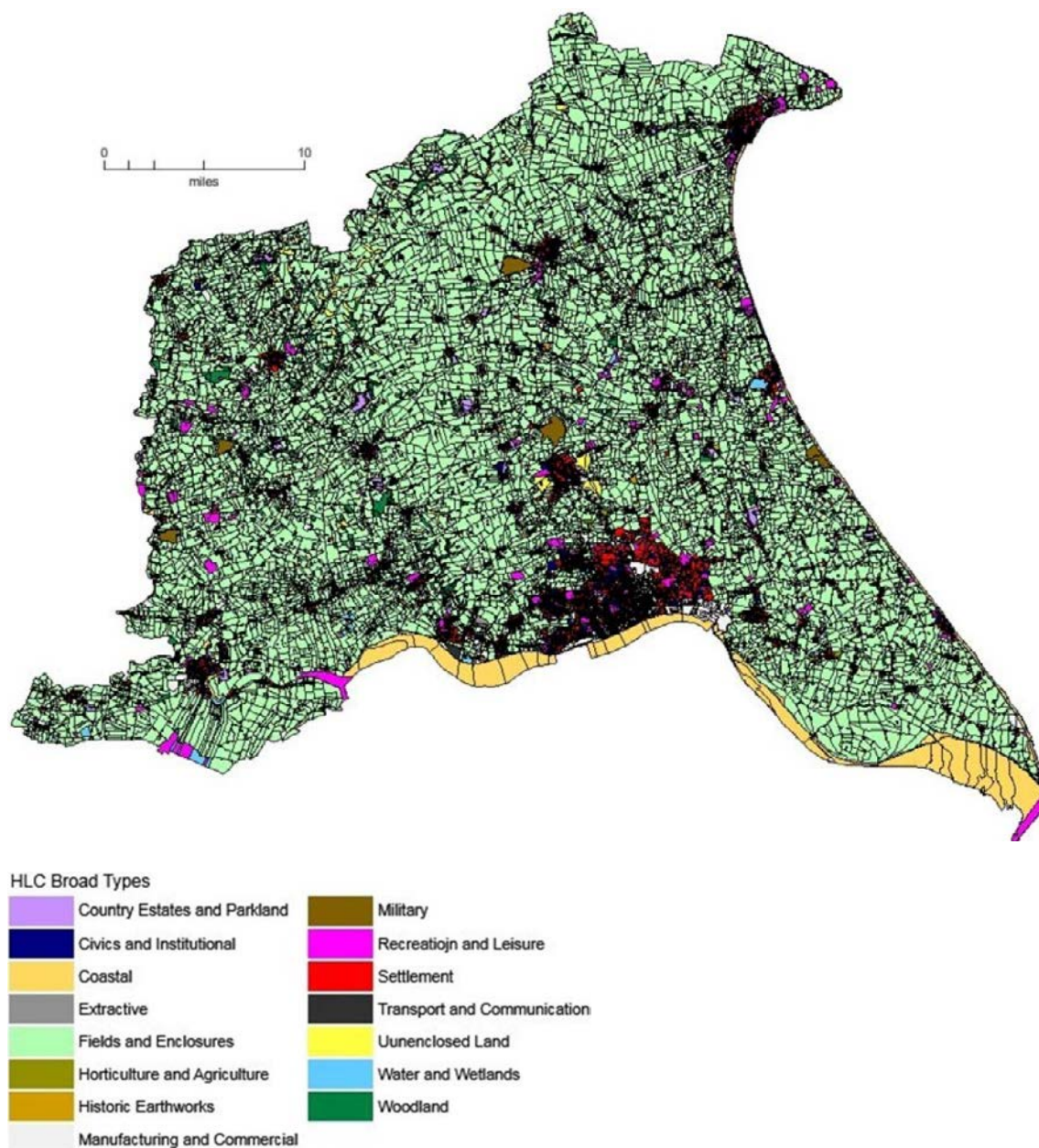
The proportion of each category in the Project Area as a whole can be seen in the following pie-chart.



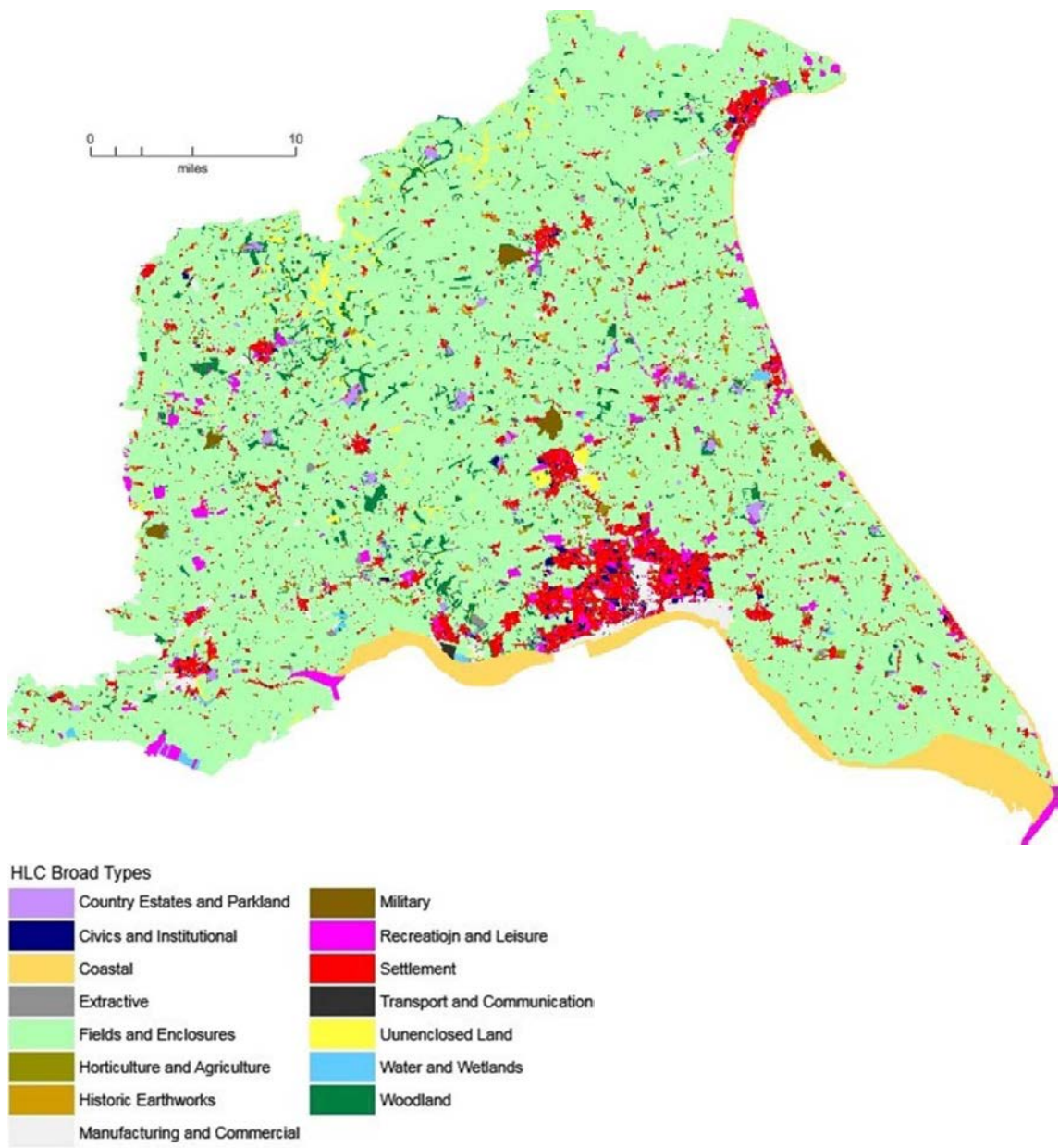
A.3 Maps

Broad Types

Current Broad Types showing individual polygon boundaries

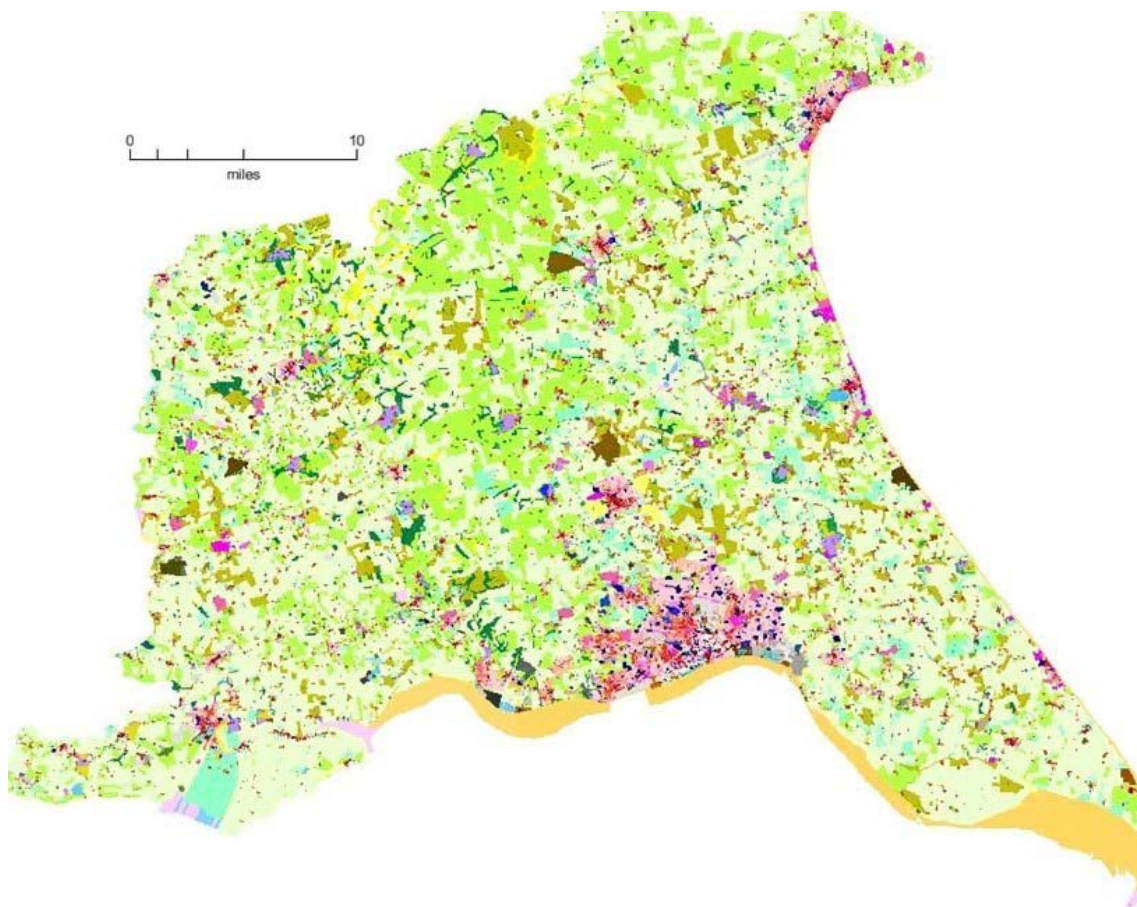


Current Broad Types without individual polygon boundarie



HLC Sub-types

Current HLC Sub-types without individual polygon boundaries



HLC Sub-Types

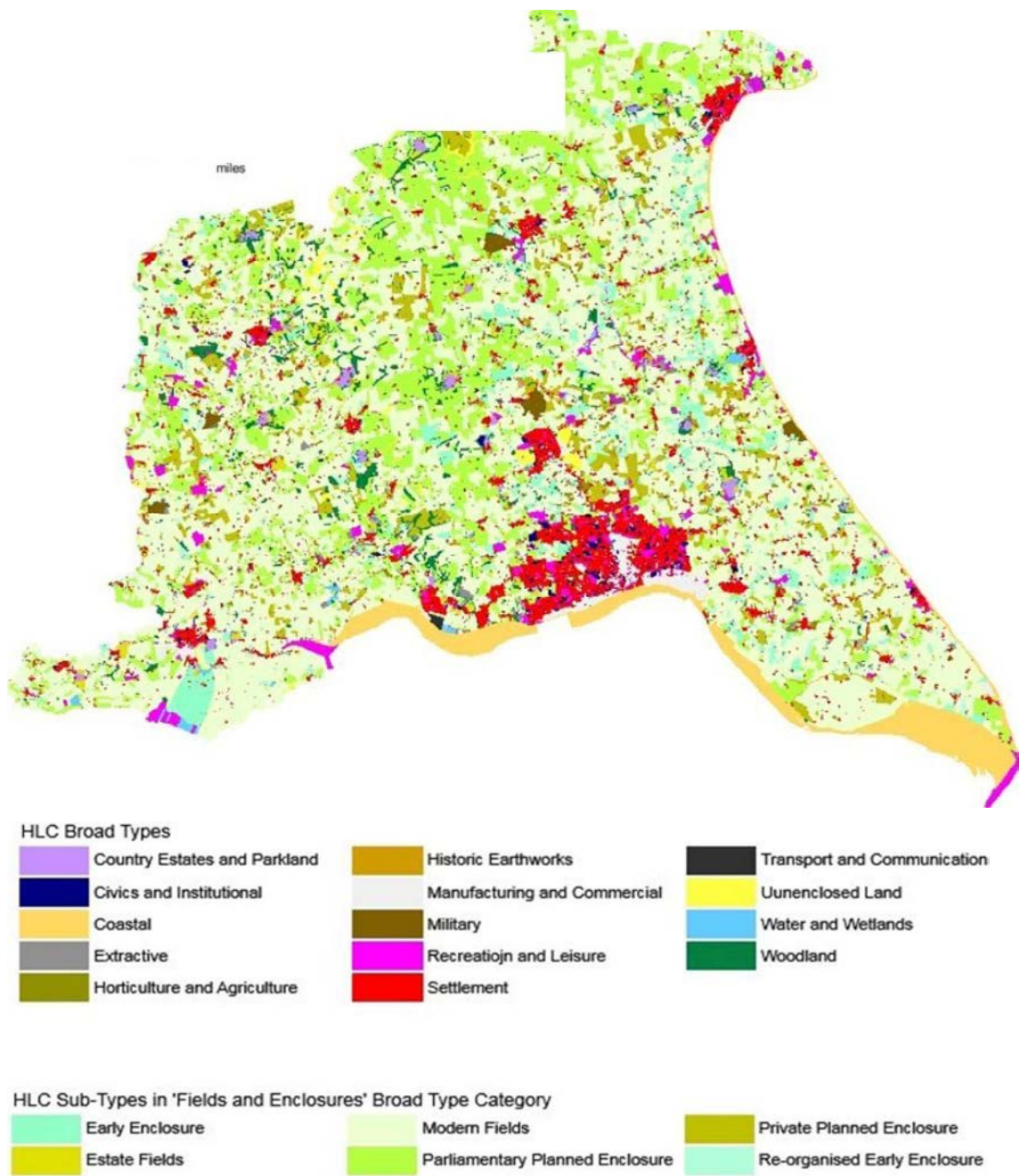
	Air Weapons Range
	Allotment Gardens
	Ancient/Semi Natural Woodland
	Artificial Open Water
	Beach
	Bomb Damage Plot
	Brick and Tile Works
	Bus Depot
	Bus Station
	Campsite
	Canal lock/basin
	Car Park
	Caravan Production and Storage
	Castle
	Chalk Quarry
	Chemical Works
	Cinema Complex
	Civil Airfield
	Clay Pit
	Coastal Management
	Common: Heathland
	Common: Pasture/Meadow
	Country House
	Coverts
	Crop Storage
	Deer Park
	Derelict Industrial Land
	Detached Housing (C18th)
	Detached Housing (C19th)
	Detached Housing (C20th)
	Detached Housing (C21st)
	Docks, Wharves and Havens
	Domestic Garden
	Early Enclosure
	Electricity Related Infrastructure
	Emergency Services

	Fuel Distribution
	General Commercial
	General Industrial
	Golf Course
	Health Centre
	High Status Residence
	Higher/Further Education Establishment
	Historic Settlement Core
	Hospital
	Hotel Complex
	Industrial Estate/Retail Park
	Institutional Residence
	Intensive Livestock Farming
	Isolated Farm Complex
	Kitchen Gardens
	Landfill
	Landscape Park
	Law Courts
	Leisure/Sports Centre
	Limestone Quarry
	Marina
	Marsh
	Medieval Manorial Site
	Medieval Religious Complex
	Medieval Village Earthworks
	Military Airfield
	Military Base
	Mill Complex
	Missile Base
	Mixed 20th Century
	Modern Fields
	Motte and Bailey
	Mud Flats
	Municipal and Private Cemeteries
	Municipal Buildings
	Natural Open Water

	Parliamentary Planned Enclosure
	Places of Religious Worship
	Planned Residential Development
	Plantation Woodland
	Prison
	Private Planned Enclosure
	Public Parks and Gardens
	Racecourse
	Railway Station
	Raised Mine
	Re-organised Early Enclosure
	Recreation Ground
	Recreational Fishing Pond
	Recreational Seafront
	Recycling Centre
	Reinstated Land
	Road Junction
	Rough grassland/scrub
	Salt Marsh
	Sand and Gravel Quarry
	Sand Dunes
	School
	Semi Detached Housing (Pre WWII)
	Semi-detached Housing (C21st)
	Semi-detached Housing (WWII - C20th)
	Service Station
	Shopping Centre
	Sidings
	Sports Field and Courts
	Sports Stadium
	Static Caravan/Chalet Park
	Supermarket
	Terraced Housing (C18th)
	Terraced Housing (C19th)
	Terraced Housing (C20th)
	Terraced Housing (C21st)

HLC Iconic Map

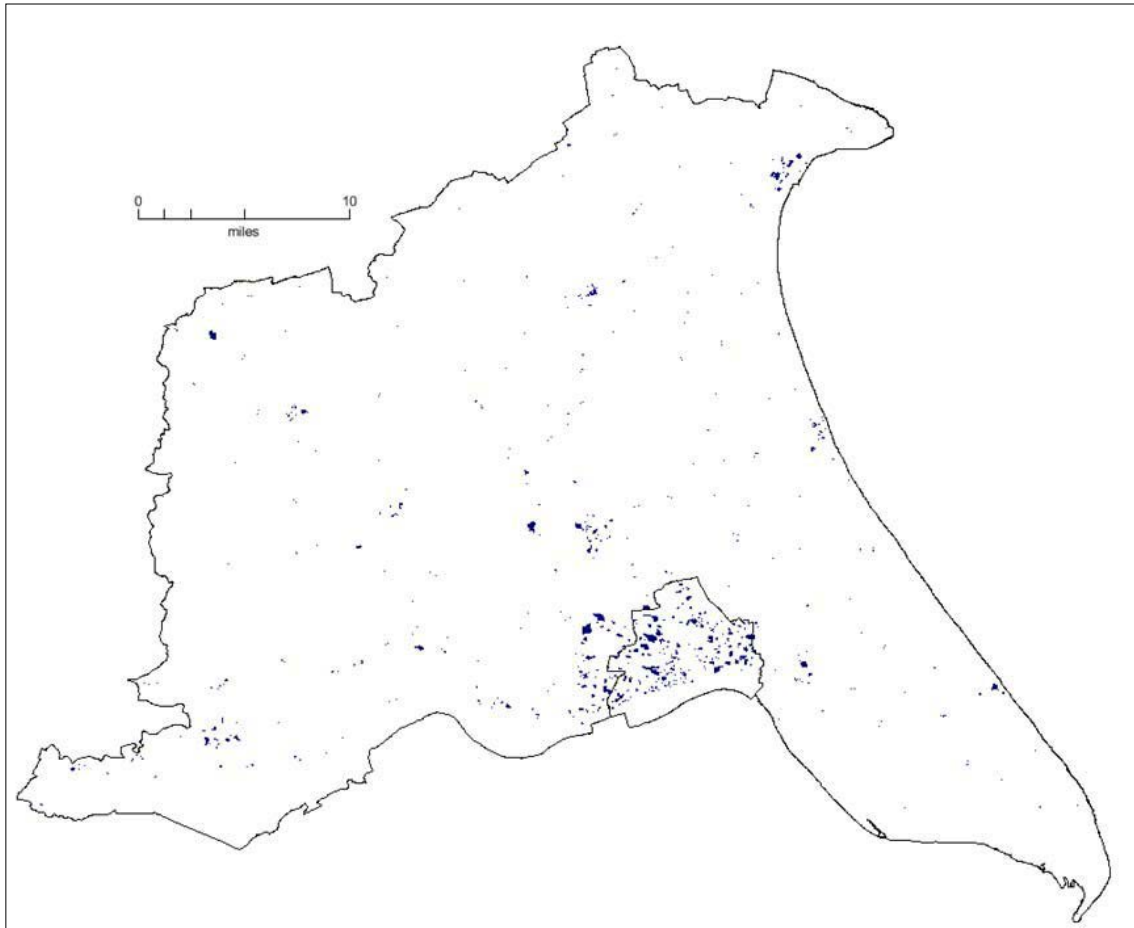
The 'Iconic Map' shows the HLC sub-types in the Fields and Enclosures Broad Type and all other Types as their Broad Type.



A.4 HLC Character Sub-type Categories for Each Broad Type

Descriptions and codes for each HLC Character Type sub-division are listed below under each of their Broad Type categories.

Civics and Institutional (CIV)



Total Area	1157ha
Percentage of Project Area	0.47%
No of polygons	1126
Average polygon size	1.02ha

This Broad Type is a very diverse category which constitutes public buildings and their surrounds, plus places of religious worship and cemeteries. These Character Types are those which are associated with the services largely used in the organisation and structure of daily life.

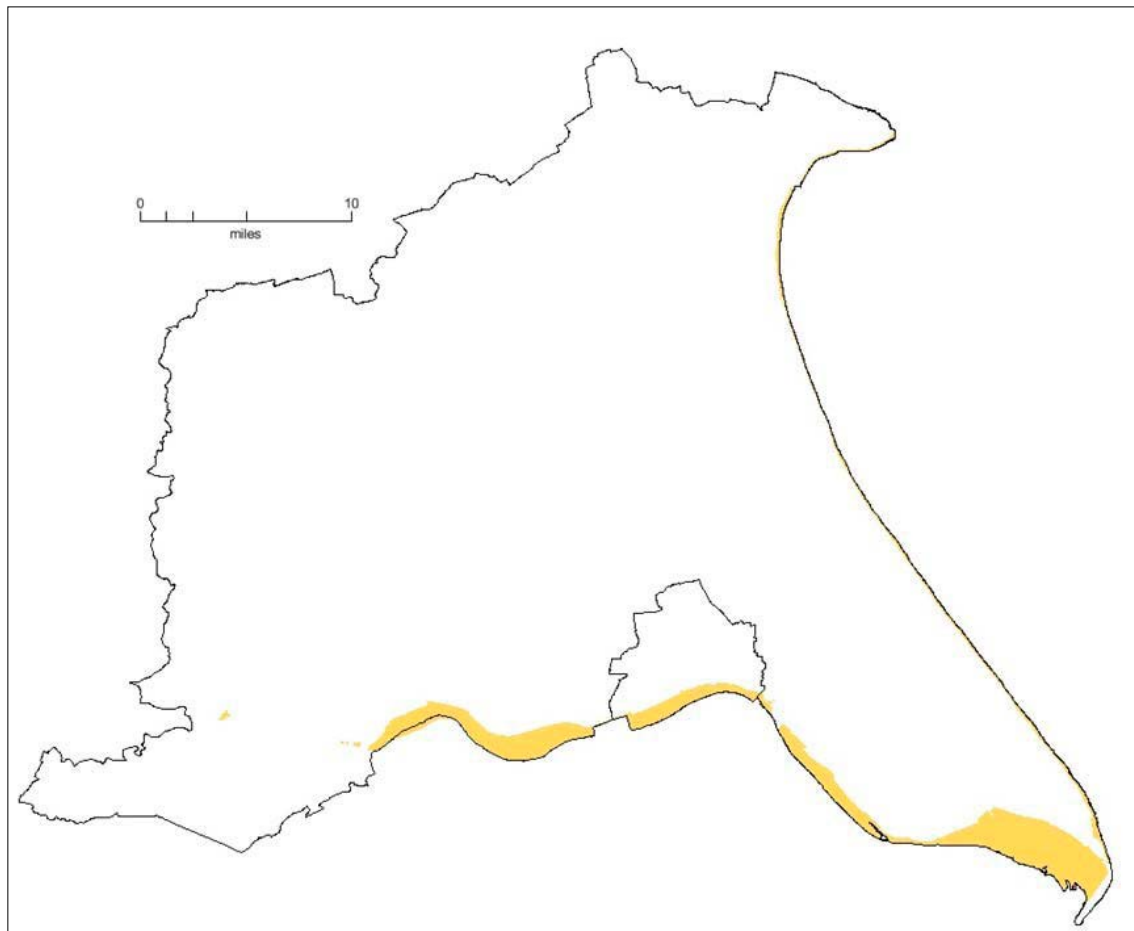
Most of these types occur within settlements, some types are peripheral, though only rarely do these types occur without association to settlement.

The type also has a diverse date range. The Places of Religious Worship Character Type consists mainly of structures established in the Medieval

period, many with Previous Types of the same category, whereas many of the other types were initially established in the 19th century, as part of the civic expansion of the Victorian era. This was associated with the growth of urban settlement and a concurrent rise in population. More recent establishment has been at a slower rate although the more recent examples of this category are often been larger in scale than their 19th century counterparts.

HLC CHARACTER TYPE	CODE	SCOPE NOTE
Emergency Services	CIV 129	Buildings used by organisations whose aim is to ensure public safety such as the Police, Fire and Rescue Services, Coastguard and RNLI.
Health Centre	CIV 124	Centralised building offering general medical practice, clinics and treatment. Often based on a partnership of General Practitioners.
Higher/Further Education Establishment	CIV 120	Institutions of post-compulsory education such as universities and colleges. Also includes 6th form colleges.
Hospital	CIV 123	An institution for the medical, surgical, obstetric and psychological care of patients.
Institutional Residence	CIV 128	Places of residence owned and managed by institutions, local government and charities, such as care homes, children's homes and almshouses.
Law Courts	CIV 320	Large buildings of Courts of Law
Municipal and Private Cemeteries	CIV 122	Local government and privately maintained cemeteries established after the Burial Act of 1853, which enabled local authorities and private companies to purchase ground for burial.
Municipal Buildings	CIV 55	Building or group primarily used for local government purposes, also libraries.
Places of Religious Worship	CIV 121	Churches and other places of worship, plus associated buildings and graveyards.
Prison	CIV 127	A public building used to house convicted criminals and accused persons remanded in custody and awaiting trial.
Recycling Centre	CIV 200	Facility to recycle household waste and items. Usually a yard covered with skips provided by local government as civic amenity.
School	CIV 119	An institution or building at which children and young people under the age of 19 receive education.

Coastal



Total Area	9716ha
Percentage of Project Area	4.02%
No of polygons	187
Average polygon size	51.95ha

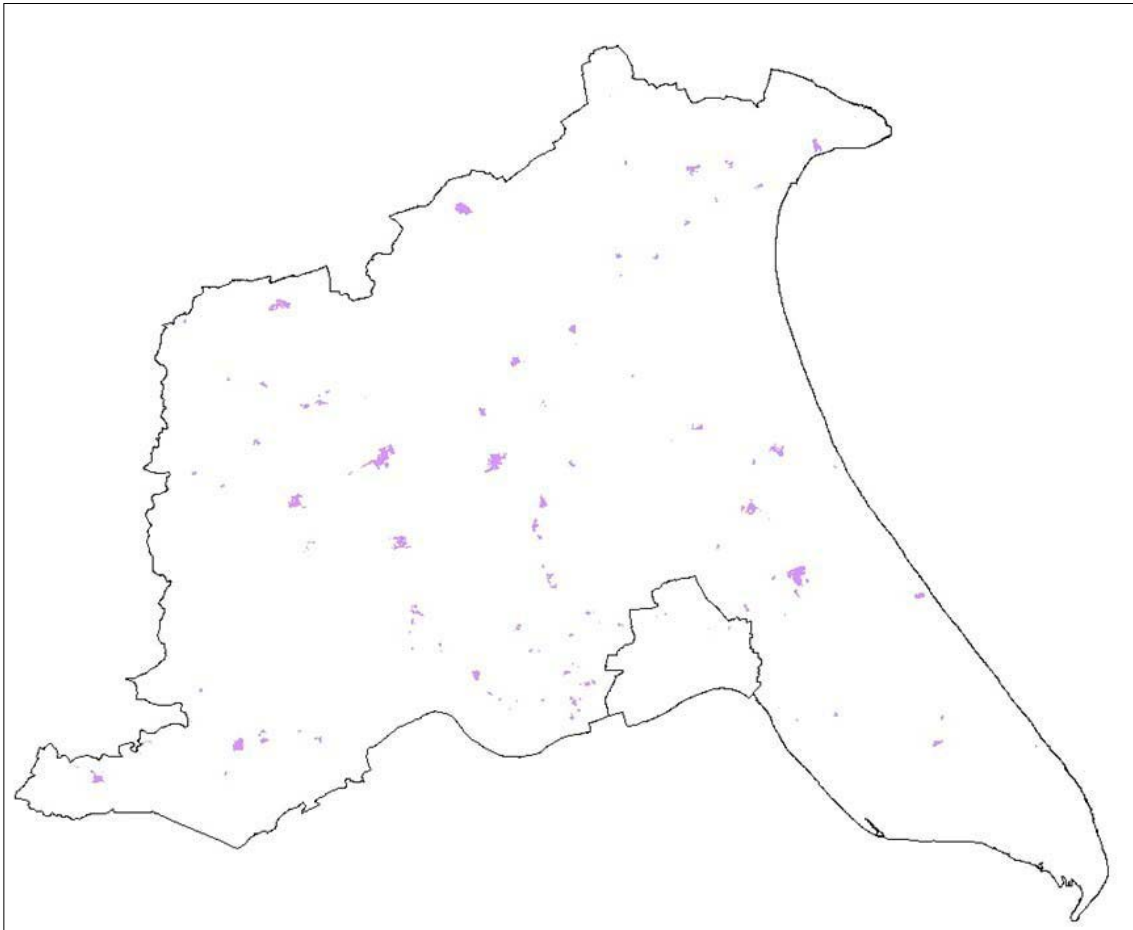
A large proportion of the Project Area boundary is formed by coastline. This category contains types which are very important for conservation, biodiversity, flood management and sense of place. The Coastal category is highly dynamic in nature with high vulnerability to change via natural forces. Although this category is often perceived to be largely 'natural', there is a historic human dimension of this landscape type regarding practises such as land reclamation and management of saltmarsh, in addition to more obvious types of shoreline management.

The major proportion of this Character Type by area, consists of large swathes of mudflats. This is largely due to the estuarine boundaries provided by the two Unitary Authorities in order to define the Project Area extending to the low water-mark.

The Coastal HLC Character Types clearly have an important role to play in the future of coastal and estuarine shoreline management of the Project Area.

HLC CHARACTER TYPE	CODE	SCOPE NOTE
Beach	COA 126	Expanse of flat sand or small pebbles along a shoreline. For the purposes of the project only portions of beaches above mean high water are marked.
Coastal Management	COA 156	Includes built structures for coastal protection and managed retreats. In the Humber Estuary managed retreat results in the formation of man-made salt marsh, within the field allowed to flood. Distinguished from natural salt marsh by the regular banks along the edges of the original field boundaries.
Mud Flats	COA 157	Coastal mud flats, above mean low water.
Salt Marsh	COA 155	Area of marshy ground intermittently inundated with salt water or that retains pools or rivulets of salt or brackish water. Has characteristic salt-thriving (halophytic) vegetation.
Sand Dunes	COA 154	Wind-formed sand hills. Generally run parallel to the shoreline, inland from a flat beach. Dunes provide niche habitats for specific types of flora and fauna. They also may overlie archaeological sites and preserved landscapes.

Country Estates and Parkland (CEP)



Total Area	1628ha
Percentage of Project Area	0.67%
No of polygons	434
Average polygon size	3.75ha

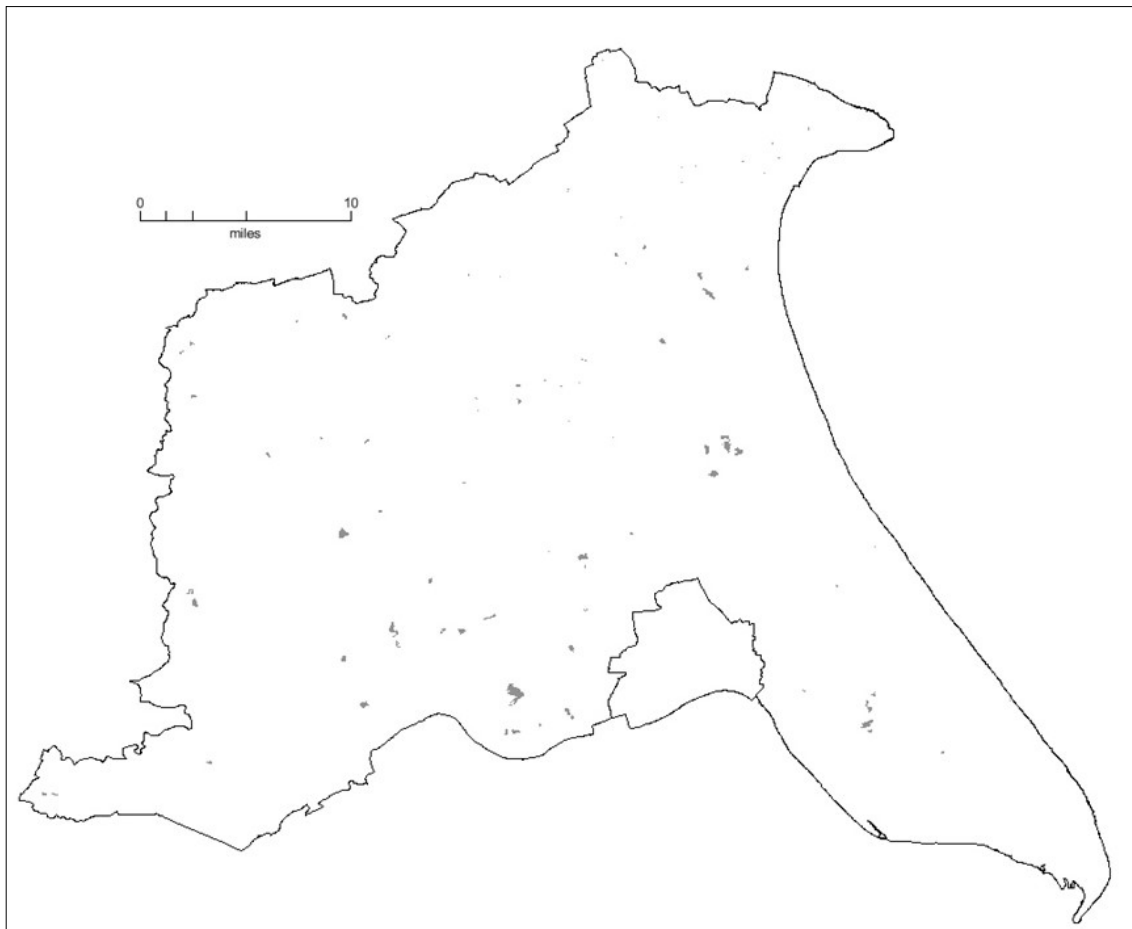
The Country Estates and Parkland Broad Type includes large high status houses and designed landscapes. These range from the large manor houses and medieval deer parks to later 18th and 19th century stately homes and their associated parklands. Many of these latter parklands were designed to appear 'natural' with carefully located trees and lakes, positioned in order to provide pleasing vistas, when viewed from the house and locations within the grounds themselves.

Some of the Character Types have Past Types with origins in medieval Deer Parks, whereas others reveal evidence for repositioning of the medieval village in order to create the house and parkland, plus evidence for former agricultural usage. Many buildings and structures within the type are of special historic and architectural interest and as such are protected as Listed Buildings and Scheduled Monuments. Where landscaped Parkland has been

converted to agricultural fields these are included in the Fields and Enclosures Broad Type.

HLC CHARACTER TYPE	CODE	SCOPE NOTE
Country House	CEP 67	Large stately homes, often surrounded by extensive estates or landscape parks. Although originally of purely residential use, these are now often preserved as museums by national organisations. This HLC type is included here as it is inappropriate to divorce these buildings from their surroundings.
Deer Park	CEP 65	Usually found as a previous type, this designation indicates the presence of a medieval hunting preserve. This can be recognised from documentary evidence, or from data held in the HER.
Estate Buildings	CEP 66	Usually similar in character to ordinary farm complexes. However, estate buildings are an integral part of a typical estate, and therefore are considered part of the Country Estates and Parkland Broad Type.
Formal Gardens	CEP 63	Designed ornamental gardens, usually found in the immediate vicinity of a country house or stately home. These are very different in character to the landscape park that usually surrounds them.
Kitchen Gardens	CEP 64	Often surrounded by a brick wall. They are clearly indicated by a regular pattern of cultivation, usually in the form of a grid. These will often be set some distance away from the main residence.
Landscape Park	CEP 62	Parkland landscaped by the planting of trees and/or creation of earthwork features and lakes; to create an aesthetically pleasing setting for a country house.

Extractive (EXT)



Total Area	701ha
Percentage of Project Area	0.29%
No of polygons	117
Average polygon size	5.99ha

The Character Types of the Extractive Broad type have a distribution which unsurprisingly correlates closely with the geology of the Project Area and therefore the specific type of material quarried and extracted. The main area of distribution is in the area of the Chalk Wolds, Western limestone escarpment and sands and gravels to the west of the Wolds and in the Hull Valley periphery. The distribution of the type is generally rural, although settlement expansion has meant that settlement has sometimes encroached on the extraction activity or that settlement as a current Broad Type may have an Extractive Character Type as a Past Type. The Extractive Type also includes small-scale associated processing infrastructure. Larger associated manufacturing sites are included in the Manufacturing and Commercial Broad Type.

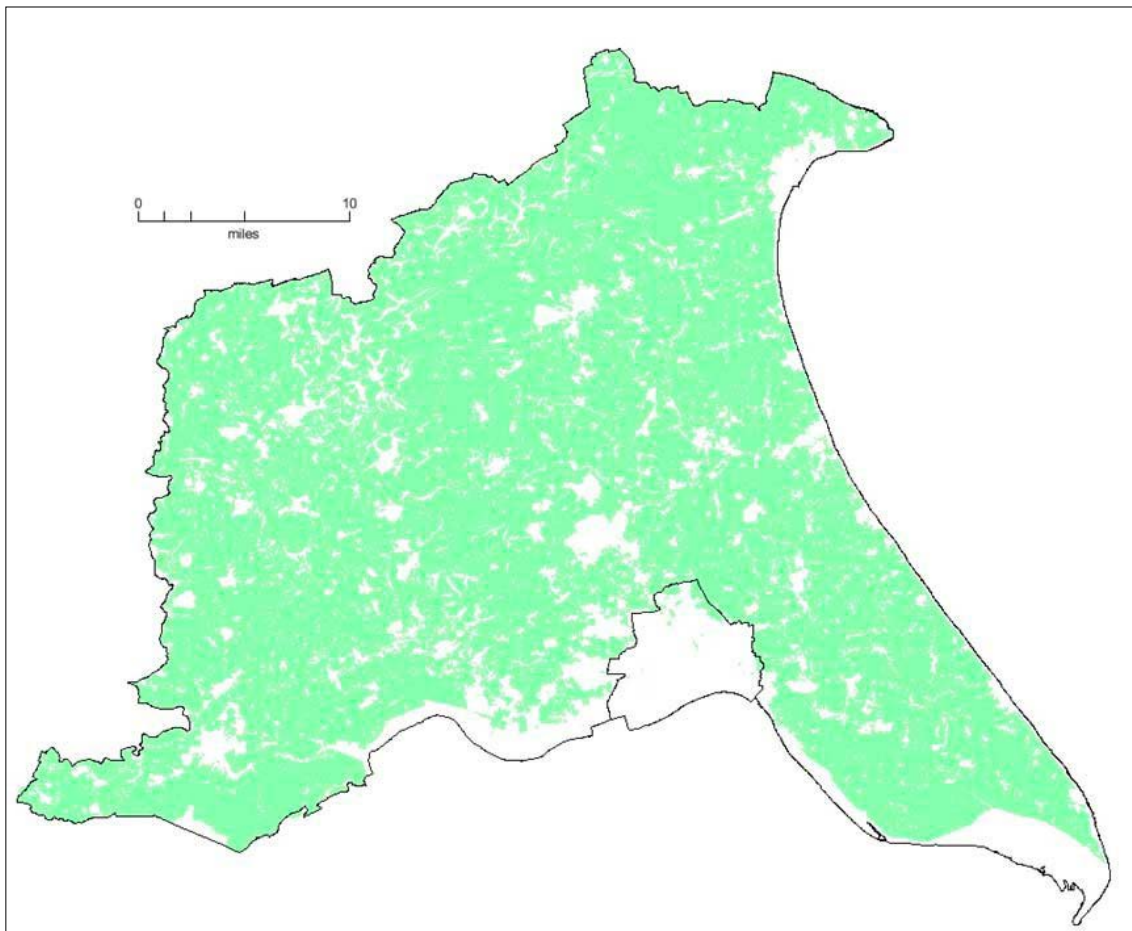
Occasionally a number Extractive and Recreation and Leisure Character Types have a close correlation, such as the re-use of inactive quarries as

sites for landfill, with the land ultimately being reinstated when full. Some extraction sites have also been developed into nature reserves, water-sports venues and fishing ponds.

There is also a correlation between date and area of polygons of this type, with the size of activity increasing over time. There is evidence for small-scale extraction from the medieval period, although few sites were of a size to merit separate recording and many of the earliest known sites form small portions of the areas of registered common land in the surrounds of Beverley. The largest Extractive polygons date from the 20th century or later.

HLC CHARACTER TYPE	CODE	SCOPE NOTE
Chalk Quarry	EXT 69	Active or inactive feature associated with the extraction of chalk.
Clay Pit	EXT 68	Active or inactive feature associated with the extraction of clay for brick or tile making. It is also used to indicate marl pits used for agricultural improvement.
Landfill	EXT 73	A former quarry in the process of being used for the disposal of commercial, industrial or domestic waste.
Limestone Quarry	EXT 72	Active or inactive feature associated with the extraction of limestone, typically as a building material.
Peat Extraction	EXT 71	Active or inactive feature associated with the extraction of peat, on a small scale as fuel or large scale for horticultural use.
Reinstated Land	EXT 74	The site of a former quarry which has been infilled either by commercial, industrial or domestic waste or natural materials. Used as a type when these sites usually have no further use.
Sand and Gravel Quarry	EXT 70	Active or inactive feature associated with the extraction of sands and gravels. This type includes large modern quarries and smaller gravel pits used in 19th century construction.

Fields and Enclosures (FIE)



Total Area	197,065ha
Percentage of Project Area	81.7%
No of polygons	10,802
Average polygon size	18.24ha

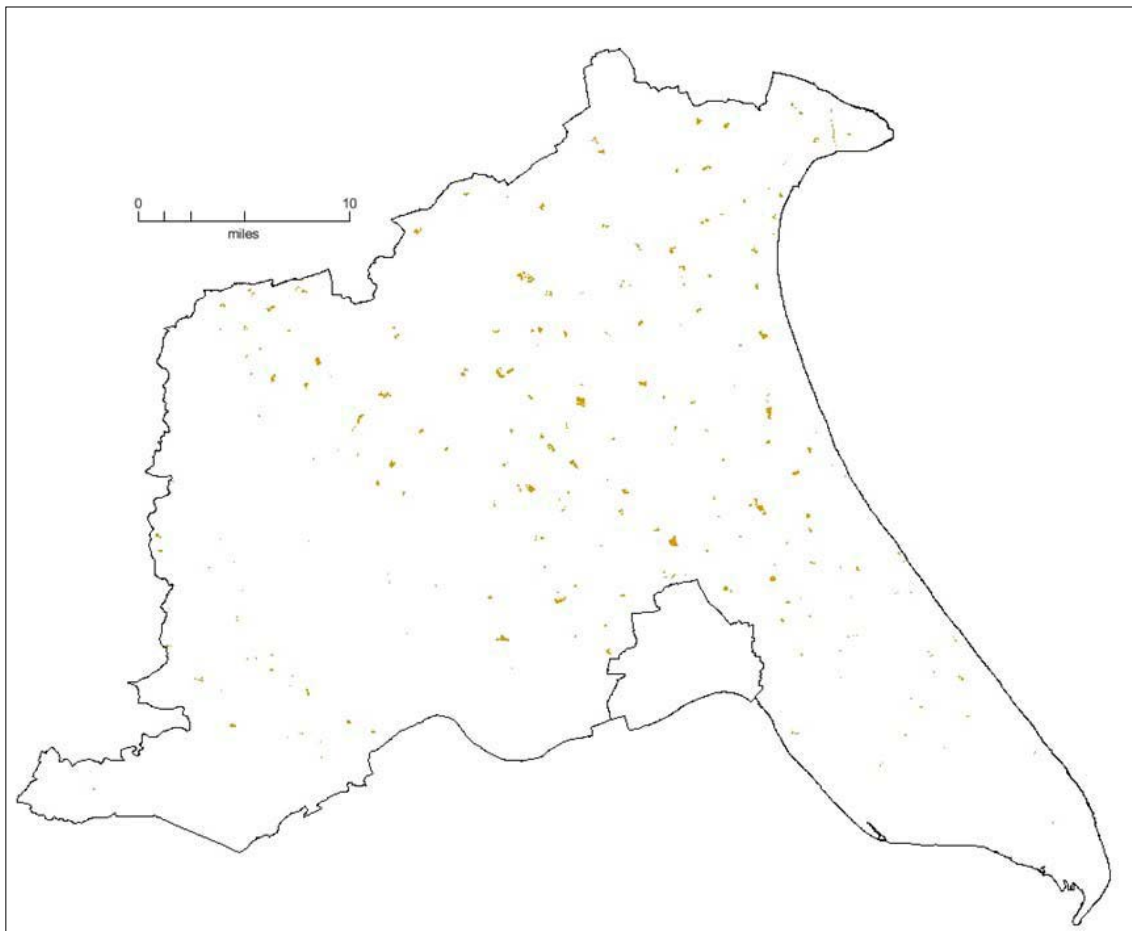
Fields and Enclosures represents the most extensive Broad Type of the Project Area. The main use of the Type is for agriculture, which is predominantly arable in nature. The type is important for the economy of the Project Area, though also for sense of place and wellbeing. Management of the type and the nature of its change may have a significant impact on the character of landscape in the Project Area.

Most enclosure within the Project Area is relatively regular in nature. The enclosure history of the Area is influenced by its topography. There is some patterning in the distribution of the Current HLC types with the large Parliamentary Enclosures of the Wolds retaining boundaries, whereas in the land of lower elevation to the east and west there is more boundary loss as the enclosures were smaller in size, necessitating a higher degree of modification to create larger fields for modern mechanised agriculture.

Of the HLC Character Types below, all Types except Open Strip Fields are present within the current landscape. Open Strip Fields exists purely as a Past Type in the Project Area, though legible in some Current Types. A large proportion of the Fields and Enclosures display evidence of previous landscape character.

HLC CHARACTER TYPE	CODE	SCOPE NOTE
Early Enclosure	FIE 4	Pre-parliamentary enclosures of medieval to 17th century date. Where these result from the enclosure of Open Strip Fields reverse 's' or 'c' shaped boundaries may be seen. Typically located on the edge of settlements, although some whole parishes have been enclosed early.
Estate Fields	FIE 7	This type is a result of the transformation of landscaped parks or deer parks to agricultural use. This is usually seen in the 20th century, and may be seen as a variation on the Modern Fields type.
Modern Fields	FIE 1	Typically post WW2 reorganisation of agricultural land, resulting in large fields exhibiting significant boundary loss from 1st Edition Ordnance Survey.
Open Strip Fields	FIE 11	Open arable land divided into strips in the medieval manner. Went out of use in most areas during the 18th and 19th centuries.
Parliamentary Planned Enclosure	FIE 2	Highly rectilinear field patterns resulting from the enclosures of common land and open fields by Act of Parliament. This type of landscape is predominantly 18th/19th century in the East Riding, though the latest enclosure of this type occurred in the early 20th century.
Private Planned Enclosure	FIE 3	Usually similar to Parliamentary Planned Enclosure in form though not enclosed via an act of parliament. May be of comparable date to Parliamentary Enclosure or slightly earlier in date. Some very early enclosure by agreement with surviving map evidence is included in this category.
Re-organised Early Enclosure	FIE 300	Fields which were enclosed prior to the Enclosure Act but which have undergone boundary alteration and loss by 1850s OS mapping.

Historic Earthworks (HEA)



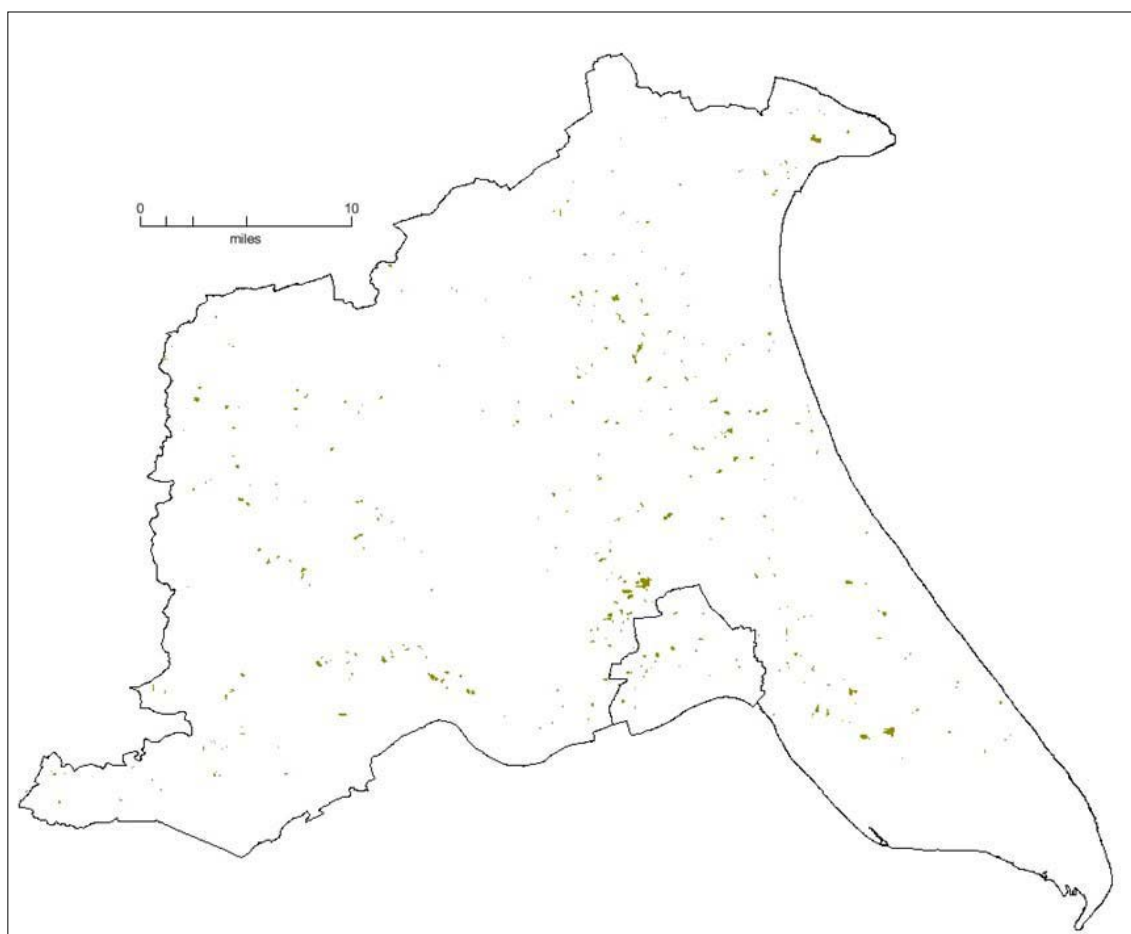
Total Area	1131ha
Percentage of Project Area	0.46%
No of polygons	367
Average polygon size	3.08ha

The Historic Earthworks Category primarily contains areas where current landscape displays very high legibility of below-ground archaeological remains, so that the Past Type becomes the chief influence on the Current Character and perception of the area of land. This Broad Type contains a high proportion of Scheduled Monuments.

HLC CHARACTER TYPE	CODE	SCOPE NOTE
Medieval Manorial Site	HEA 162	Earthworks identified as the remains of a manorial centre. Many examples are moated. Typically seen at the edge of a medieval settlement.
Medieval Religious Complex	HEA 163	Earthworks associated with a medieval religious foundation, such as a monastery, abbey, priory or preceptory. The type will also include identifiable medieval hospitals.

HLC CHARACTER TYPE	CODE	SCOPE NOTE
Medieval Village Earthworks	HEA 161	Earthworks interpreted as the remains of vernacular medieval settlement. This type can be used to demonstrate shrinkage or desertion, and is associated with Historic Settlement Core as a previous type.
Motte and Bailey	HEA 164	Distinctive two-tier earthwork identified as foundations for a former medieval castle. Where the castle itself still exists, this type will not be used. Identifiable from APs or HER/SMR data.
Other Historic Earthwork	HEA 160	Historic earthworks not covered by the other categories.

Horticulture and Agriculture (HAA)



Total Area	997ha
Percentage of Project Area	0.41%
No of polygons	462
Average polygon size	2.15ha

This HLC Broad Type consists primarily of activities relating to agricultural food production which are not undertaken within fields and enclosures. It also includes the production of plants for sale. The Intensive Livestock Farming HLC Character Type may take place within a fieldscape, however the construction of structures to house the stock has altered the character of the field.

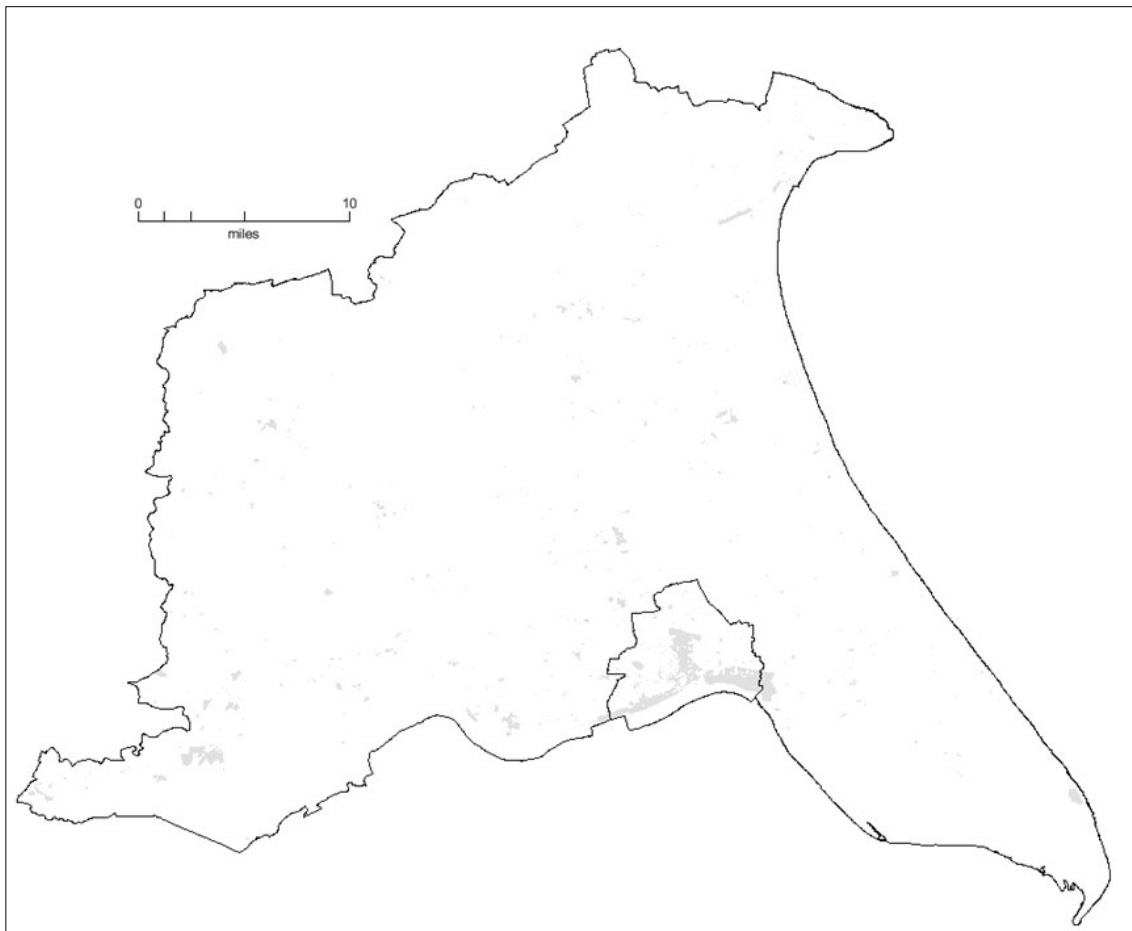
These activities are generally small in scale, although rural areas of the Project Area have been a focus of 20th-century activity for the rearing of pigs and large-scale nurseries housed in glasshouses.

Most elements of the Type are in rural locations, however Allotment Gardens have a particular association with settlement, being a relatively recent phenomenon intended to allow urban settlement inhabitants the space to be able to grow and produce their own food. They were of particular importance

during the two World Wars, in times of food scarcity. With regard to date range, this type is mainly of the 19th century and later.

HLC CHARACTER TYPE	CODE	SCOPE NOTE
Allotment Gardens	HAA 92	Publicly owned land that has been divided into small plots for rental by individuals. Clearly identifiable from APs and map data.
Crop Storage	HAA 96	Sheds or silos used for the storage of crops. This type will be used to record large facilities, rather than individual silos on a small farm.
Intensive Livestock Farming	HAA 165	Agricultural buildings used to house poultry and pigs, and occasionally other livestock. Generally in long sheds. Also includes free range sheds and enclosures and fish farms.
Nurseries	HAA 93	The growing of ornamental plants, fruit and trees for sale using glasshouses. Glasshouses are clearly visible on maps. Also includes garden centres.
Orchards	HAA 91	Areas of land given over to the growing of fruit. Very small domestic examples will not be recorded.

Manufacturing and Commercial (MAC)



Total Area	3106ha
Percentage of Project Area	1.28%
No of polygons	1601
Average polygon size	1.94ha

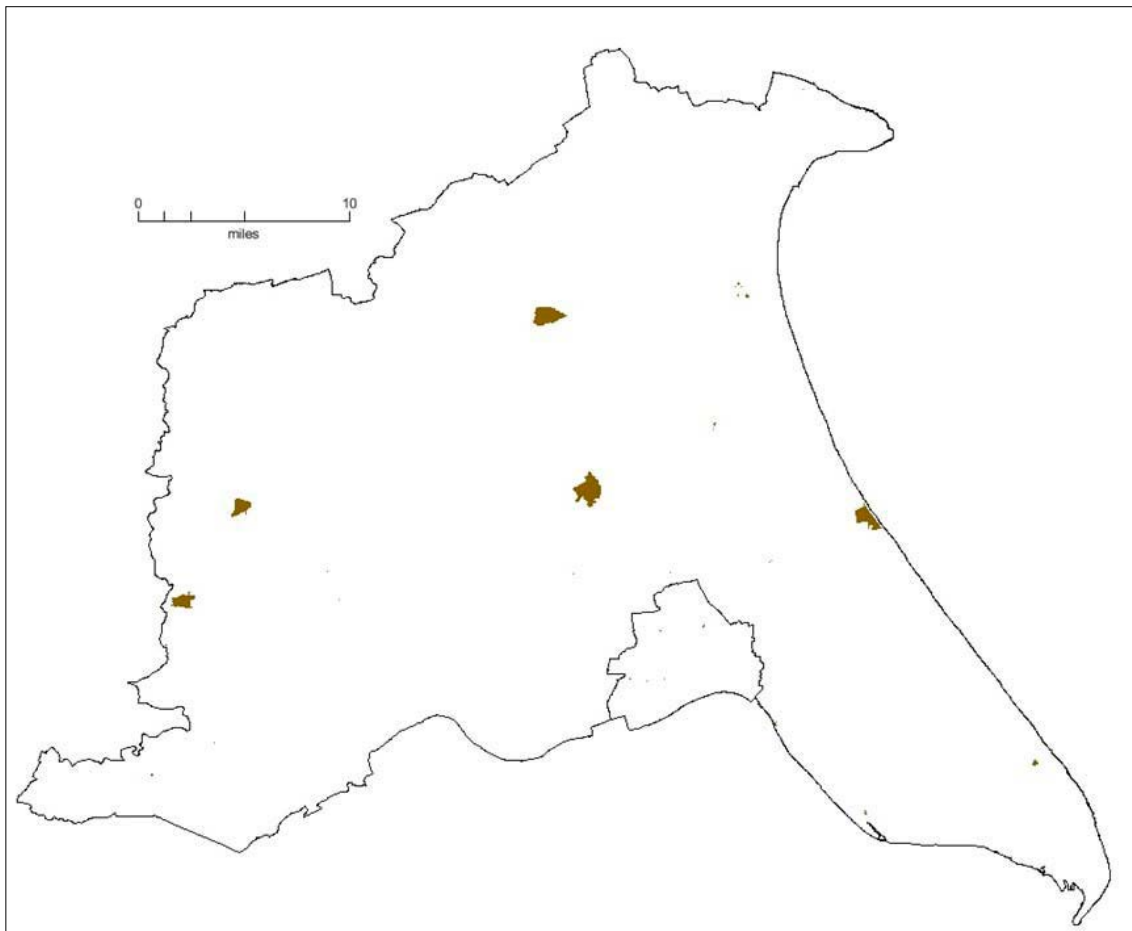
This category contains HLC Types concerned with the manufacture and sale of numerous types of goods and services. The type is predominantly located within larger settlements and often exists in a concentrated zone of activity.

Small commercial businesses and offices located in historic settlement cores are not included in this Type as they are in mixed areas and often are located within buildings which once had a function as purely settlement or a combination of commercial premises and settlement; therefore their dominant character type is within the Settlement Broad Type.

This Broad Type is overwhelmingly post-medieval and modern in origin. There was a rapid expansion of the Type in the 19th century, alongside concurrent population expansion and increase in settlement size. There has been a continued increase with more recent settlement expansion.

HLC CHARACTER TYPE	CODE	SCOPE NOTE
Brick and Tile Works	MAC 47	Ceramic building material manufacturing and processing. May be associated with 'Clay Pits' within the 'Extractive' broad type.
Caravan Production and Storage	MAC 105	Factories, workshops and storage associated with caravan production. An important type of manufacturing within East Yorkshire.
Chemical Works	MAC 46	Mainly found alongside the Humber Estuary, this type includes large industrial developments related to the petro-chemicals industry.
Derelict Industrial Land	MAC 50	Area of former industrial activity that has been cleared, but has had no subsequent use.
Docks, Wharves and Havens	MAC 48	Facilities for loading and unloading waterborne cargo. Also includes those associated with fishing.
Electricity Related Infrastructure	MAC 112	This category includes power stations and electricity substations.
Factory	MAC 44	Manufacturing facility usually identified from OS mapping and aerial photographs.
Fuel Distribution	MAC 113	Buildings and structures associated with the distribution of fuel including gas, such as storage tanks, refineries and flare towers.
General Commercial	MAC 557	Area of commercial use which doesn't fit into other commercial categories.
General Industrial	MAC 170	Areas of industrial use which don't fit into the other categories.
Industrial Estate/Retail Park	MAC 43	Modern complex of industrial buildings, often found at the edge of settlements. Also includes retail parks. Occasionally a mixture of retail and manufacture.
Mill Complex	MAC 116	Buildings associated with the milling of grain and other materials. Typically wind or water powered. Will produce polygons of similar size to isolated farmsteads. Most are inactive.
Shopping Centre	MAC 109	One or more buildings forming a complex of shops, with interconnecting walkways enabling visitors to walk from unit to unit under cover, often with a parking area.
Supermarket	MAC 556	Very large supermarket in isolation, not generally part of a retail park.
Timber Yard	MAC 111	Yard associated with the storage of and distribution of timber.
Vehicle Storage	MAC 169	Area of storage and distribution for motor vehicles, such as cars, vans and lorries.
Warehouses	MAC 45	Buildings used to store large stocks of goods or merchandise. Will mainly include older examples along watercourses, as modern examples cannot be distinguished from factory units.
Water Treatment	MAC 114	Buildings and structures associated with the treatment and distribution of water. Includes sewerage works and water towers.

Military and Defensive (MIL)



Total Area	1028ha
Percentage of Project Area	0.42%
No of polygons	37
Average polygon size	27.78ha

The Project Area has had a relatively high military presence at times in its history, particularly during the Second World War, when the flat topography of the eastern and western parts of the Project Area led to the establishment of a number of military airfields. The coastal region of the Project Area also has at various times been of strategic importance for defence.

The military airfields have a distinct and dominant character which retains a high level of legibility even when re-purposed after being taken out of military use. The majority of military installations recorded were of 20th-century date. Some of the sites were adapted during the Cold War, such as those which became Thor Missile bases.

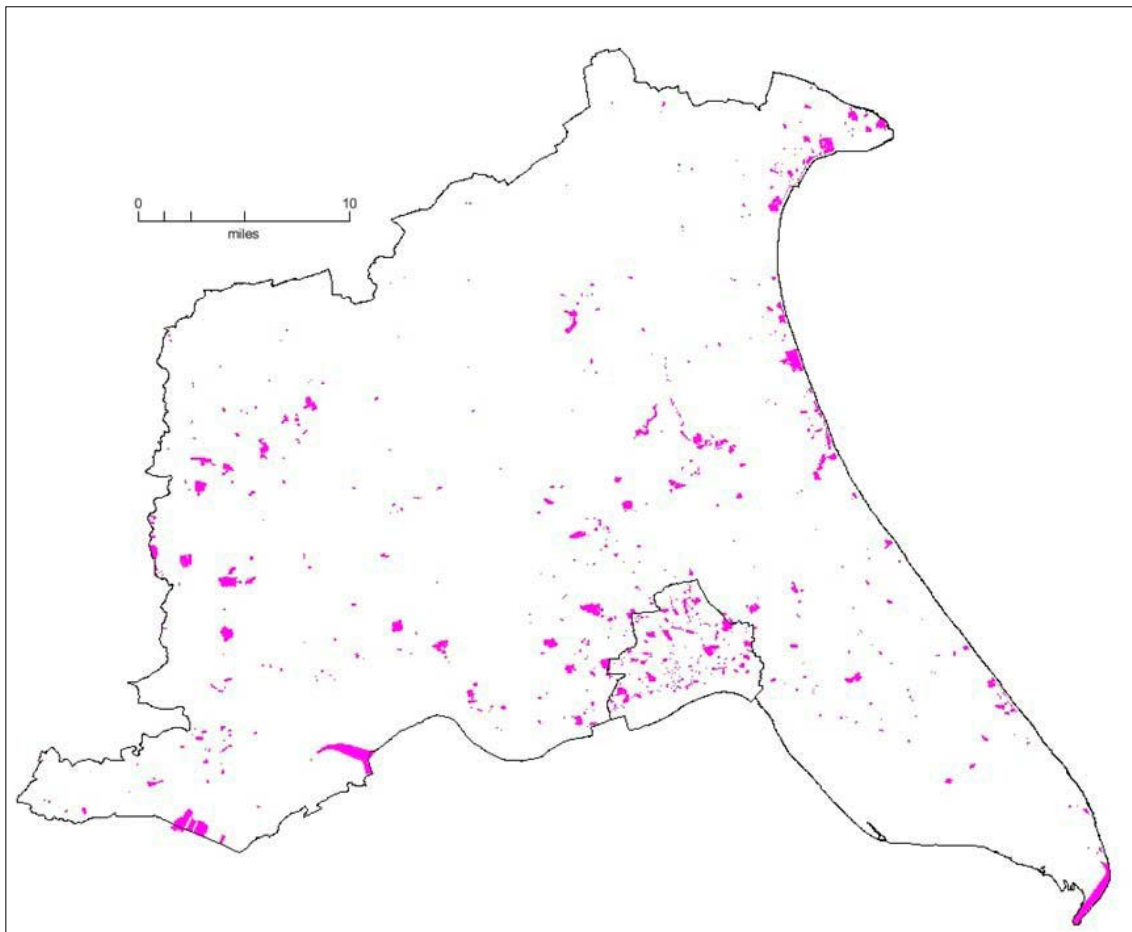
The distribution of the type is predominantly rural, though the larger establishments such as the airfields have had associated housing constructed and have possibly influenced further non-military settlement expansion,

whilst in use or after re- purposing. Few military sites are in current military usage, with the principal such site being the Normandy Barracks Ministry of Defence School of Transport at Leconfield.

Although other sites are not in current military usage, their military character is still dominant, leading to categorisation within this Broad Type.

HLC CHARACTER TYPE	CODE	SCOPE NOTE
Air Weapons Range	MIL 78	Large area of land used for training and testing of air-to-ground weaponry.
Castle	MIL 152	The private fortified residence of a lord or noble. Distinct from a fortress, which was not a home.
Fortress and Public Defence	MIL 153	Systems of public defence, not a residence. Usually with a permanent garrison. Includes town walls.
Military Airfield	MIL 76	Active or Inactive facility for the operation of military aircraft. Characterised by the presence of runways, hangars and air traffic control buildings.
Military Base	MIL 150	An establishment owned and operated by the armed forces that shelters military equipment and/or personnel. Often with facilities for training and operations. Also includes Territorial Army Centres.
Missile Base	MIL 77	Inactive facilities for the basing and operation of offensive or defensive missile batteries. These are identifiable from APs and documentary sources.
Ordnance Depot	MIL 75	Facility used for the storage of weaponry, such as bombs or missiles. Usually identifiable from APs and documentary evidence.
Rifle Range	MIL 171	An area of land used as a firing range for practice with small arms.

Recreation and Leisure (RAL)



Total Area	4814ha
Percentage of Project Area	1.99%
No of polygons	1090
Average polygon size	4.41ha

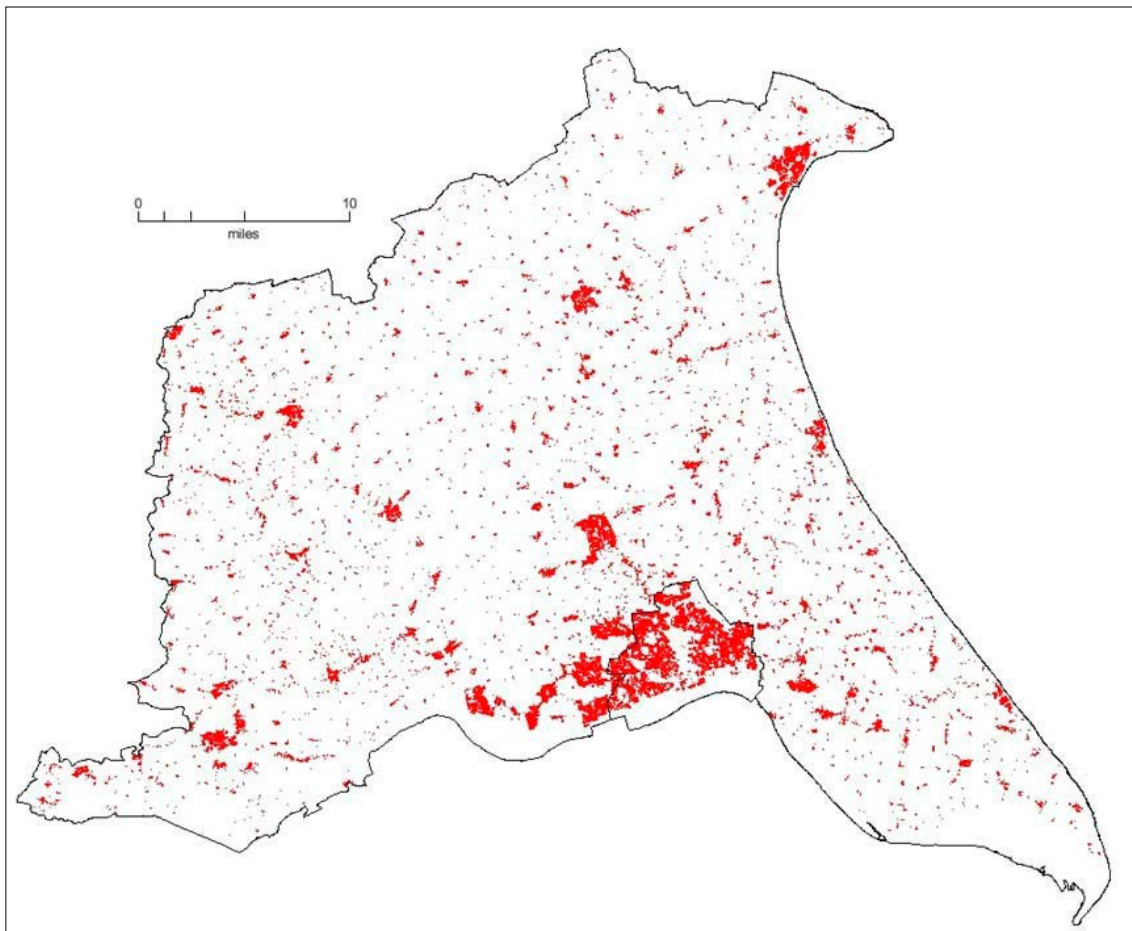
This category is a diverse Broad Type containing numerous HLC Character Types utilised by the public for recreation and leisure purposes. This category consists of both municipal facilities and those privately owned and run on a commercial basis.

This type is of significance for social and cultural life as well as economically as part of the tourism and leisure industry. Some of the HLC Character Types are relatively evenly distributed, others are generally placed within settlement boundaries, such as Public Parks and Gardens and Sports Stadiums. There is also a marked concentration of Static Caravan/Chalet Park and Campsite HLC Types within the Holderness Coastal Strip Character Area. This Broad Type is of exclusively Post- medieval or Modern origin. Expansion of the coastal 'seaside' town occurred after the advent of the railways and increases in public leisure time, such as introduction of statutory Bank Holidays in the later 19th century. The growth of caravanning and camping sites has increased

steadily since the later 1980s. This growth is aided by the fact that caravan manufacture is an extensive and important industry within the Project Area.

HLC CHARACTER TYPE	CODE	SCOPE NOTE
Campsite	RAL 134	An area of land used for camping on a temporary basis. Includes sites for tents, touring caravans and motor homes.
Cinema Complex	RAL 136	A large multi-screen cinema. Often also containing bar and cafe facilities.
Golf Course	RAL 61	Single-use area of land, often heavily landscaped, for the playing of golf. Includes private and municipal courses for the general public.
Hotel Complex	RAL 310	Large hotels and associated grounds.
Leisure/Sports Centre	RAL 135	A building and associated grounds designed to provide facilities for a range of leisure pursuits, such as a sports hall, swimming pool, cafe, and meeting rooms.
Marina	RAL 131	Area of purpose designed docking for small boats, mostly for pleasure craft, such as yachts.
Nature Reserve	RAL 60	Area of land given over to the conservation of wildlife or habitats. Often results from a previous land use, such as quarrying or peat extraction. Although most are publicly accessible, some are considered too sensitive for general access.
Other Recreational	RAL 326	Recreation and leisure facilities which do not fit into other categories.
Public Parks and Gardens	RAL 133	An area of land for the enjoyment of the public. Usually with a designed or landscaped garden, having facilities for rest and recreation. Often owned by a local authority.
Racecourse	RAL 130	Grass covered course laid out for the racing of horses. Associated buildings are also generally used for hospitality, events and exhibitions.
Recreation Ground	RAL 57	Area of open grass not used for any specific sporting purpose. Often associated with children's play facilities.
Recreational Fishing Pond	RAL 173	Either a newly-created or modified pond or body of water resulting from extractive industry. Newly-created examples often have meandering forms or linear islands in order to maximize the number of pegs (an angler's allotted fishing area). The pegs are usually visible from the air.
Recreational Seafront	RAL 172	Seafront open space in resorts, used for recreation and leisure. Can include features such as promenades, small formal gardens, bandstands, cafes, small boating lakes, children's amusements, and areas of public seating.
Sports Field and Courts	RAL 58	Area of open grass or hard court marked or laid out for a specific sporting use, such as football, tennis, basketball, cricket or bowls.
Sports Stadium	RAL 132	Sports arena, with tiered seats for spectators, usually oval in shape.
Static Caravan/Chalet Park	RAL 27	Easily recognisable from aerial photography. Some units have recreational use, some are used year round for low cost housing.

Settlement (SET)



Total Area	9280ha
Percentage of Project Area	3.84%
No of polygons	16,863
Average polygon size	0.55ha

Virtually all types of settlement are included within the Settlement Broad Type, whether nucleated or dispersed. Exceptions are the Institutional Residence HLC Type, which is within the Civics and Institutional Broad Type, and the occasional Static Caravan/Chalet Park where year-round accommodation may be allowed.

A relatively large number of HLC Types were devised for this category, with the aim of characterising the diverse types of housing at particular dates and to enable settlement growth to be ascertained by type and date.

The Historic Settlement Core HLC type was also defined by its possible original form: linear; agglomerated; green village; planned grid and estate village, in order to help facilitate further study of settlement morphological processes.

Historic Settlement Cores are typically the surviving core of the settlement, corresponding closely with that shown on the 1st edition mapping of the 1850s. The Historic Settlement Cores tend to display a combination of mainly individual properties and small terraces containing the oldest houses of the settlement. The mix reflects the replacement and rebuilding of dwellings on an individual basis. The

Historic Settlement Cores of the villages have strong historic connection to their surrounding fieldscape, associated with concurrent change.

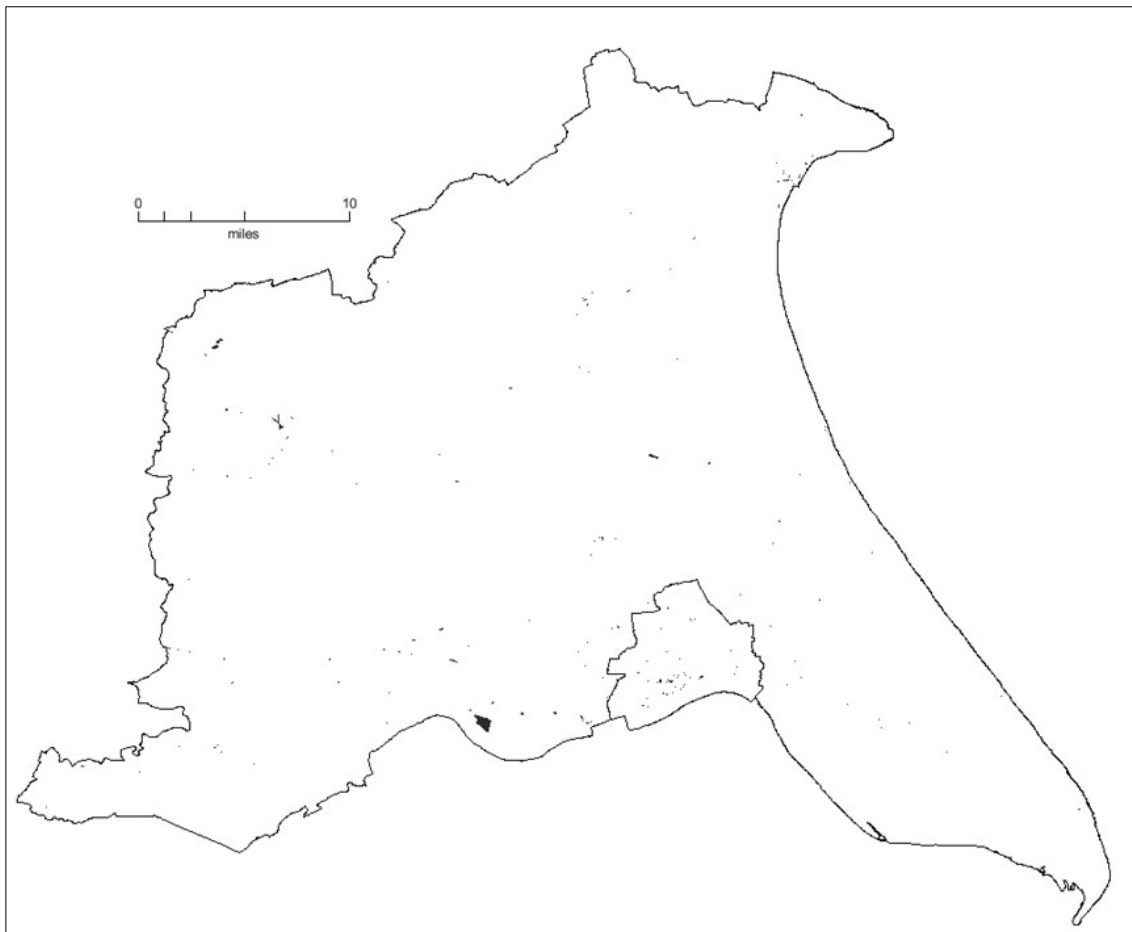
Within the Project Area, more modern settlement usually consists of the replacement of areas of pre-existing settlement and expansion at the settlement periphery. An exception to this is the planned settlement of the Port of Goole, established in the 19th century, while as a result of settlement expansion of the City of Hull, a number of villages have been subsumed by the urban settlement. Time-depth within the larger expanded settlements is often evidenced by the survival of earlier boundaries.

The distribution of settlement within the Project Area owes much to the topography of the land and its former character. There are areas of former wetlands where settlement is of lower density than that in other areas, such as the River Hull Valley and area formerly covered by Walling Fen. Two particular zones of 'preferred' settlement can also be seen in the Eastern Wolds Dip-slope Character Area and also the Western Wolds Limestone Escarpment Character Area, where strings of villages are sited at the spring-lines of either side of the chalk Wolds.

HLC CHARACTER TYPE	CODE	SCOPE NOTE
Bomb Damage Plot	SET 102	Empty housing plots within an urban setting created as the result of WW2 bombing. Most of these are in Hull.
Detached Housing (C18th)	SET 308	Detached housing of 18th century date.
Detached Housing (C19th)	SET 23	Detached housing of 19th century date.
Detached Housing (C20th)	SET 24	Detached housing of 20th century date.
Detached Housing (C21st)	SET 181	Detached housing which dates from 2000 onwards.
Domestic Garden	SET 307	Area of domestic garden subsequently sold off for housing.
Empty Housing Plot	SET 306	Housing plot either resulting from house demolition or created from other use e.g. from garden of adjacent house, but not yet built upon.
Flats and Apartments	SET 26	Blocks of flats, often in close proximity to urban centres. The type includes mid 20th century high rise, as well as more modern apartment buildings.
High Status Residence	SET 101	Large houses of the social elite, not including country estates of the 17th to 19th centuries. Includes extant Medieval Manor houses and high status residences of later date.
Historic Settlement Core	SET 18	Historic settlement cores suggested by morphology, data held in the HER, or earthwork remains. These are often more extensive than current survival would indicate. Use of the previous type function allows this to be shown.

HLC CHARACTER TYPE	CODE	SCOPE NOTE
Isolated Farm Complex	SET 20	Residential farm buildings standing alone in open countryside. These will typically date from after Enclosure, as farmers moved away from villages and closer to their new holdings.
Mixed 20th Century	SET 250	Detached and semi-detached housing developed on a plot by plot basis. Of mixed dates, where the 85% rule cannot be applied and polygon size would otherwise be too small.
Planned Residential Development	SET 99	Areas of post-WWII planned housing. Large examples are often constructed in a single phase, with sinuous streets. Some are smaller, where a street and number of houses are squeezed into a plot that may have once contained a single house.
Prefabs	SET 400	Prefabricated housing constructed after the Housing (Temporary Accommodation) Act of 1944, known as 'prefabs' such as 'Tarran bungalows'
Semi Detached Housing (Pre WWII)	SET 25	Semi-detached housing from the 19th century to 1939.
Semi-detached Housing (C21st)	SET 168	Semi-detached housing which dates from 2000 onwards.
Semi-detached Housing (WWII - C20th)	SET 180	Semi-detached housing which dates from 1940 to 1999. These can be readily identified from modern OS mapping.
Terraced Housing (C18th)	SET 167	Early terraced housing. Related to 18th century increases in wealth due to trade and industry. Also indicative in Hull of 18th century expansion beyond the line of the old town walls.
Terraced Housing (C19th)	SET 21	Terraced housing visible on 1855 and Epoch 1 OS mapping. Typically found in larger settlements.
Terraced Housing (C20th)	SET 22	Terraced housing appearing on Epoch 2 or modern OS mapping. These give an indication of 20th century urban growth.
Terraced Housing (C21st)	SET 166	Terraced housing which dates from 2000 onwards.
Traveller Site	SET 98	Designated area used to site the caravans of members of the travelling community.
Village Farm Complex	SET 19	Residential farm buildings within or immediately adjacent to an historic settlement core. Such buildings and their sites will probably pre-date enclosure.

Transport and Communication (TAC)



Total Area	230ha
Percentage of Project Area	0.09%
No of polygons	287
Average polygon size	0.80ha

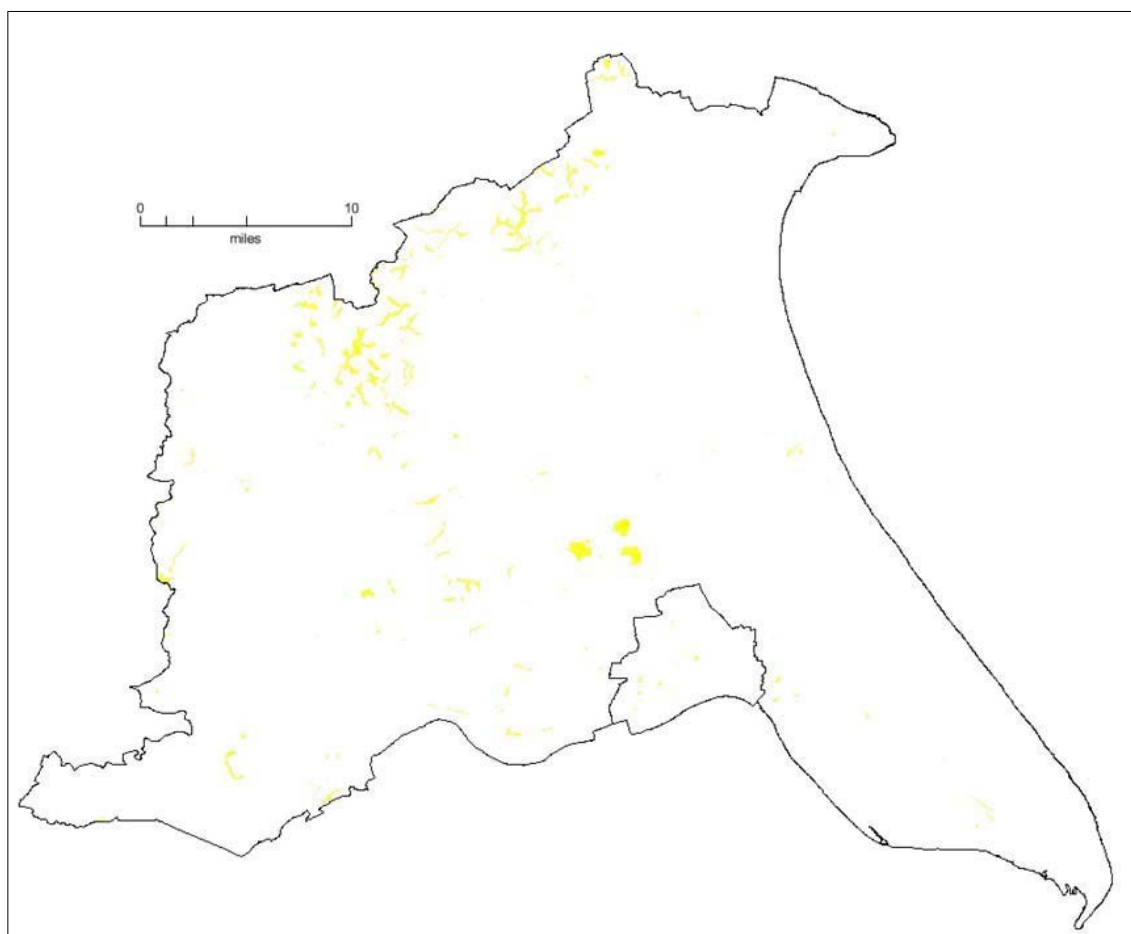
This Broad Type mainly comprises transport and communication infrastructure of non-linear form. They provide the means for the transportation of people, goods and services from one area to another. These relate to four types of transport network: road; rail; canal and air.

The decision was taken that the Project would not polygonise the long linear features that typically comprise networks of communication, as this would obfuscate landscape patterns by splitting up the project area by a series of very long, unwieldy polygons. Instead the decision was taken to utilise the central point of significant lines of communication as polygon boundaries, so that lines of communication are represented without obscuring surrounding landscape pattern. The same decision was taken with rivers used as routes of communication.

The very large road junctions of the A63 and M62 were included, as are railway sidings and canal basins and locks. With regard to air travel, there are no large civil aviation airfields within the Project Area with air travel represented by facilities for small aircraft in private ownership, rather than commercial air travel.

HLC CHARACTER TYPE	CODE	SCOPE NOTE
Bus Depot	TAC 305	Area used for bus storage and maintenance.
Bus Station	TAC 86	Large bus stations usually seen in an urban context.
Canal lock/basin	TAC 104	Areas of canalised waterway constructed for mooring, loading and unloading. Following the line of these will indicate the route of a canal when the canal itself is not polygonised.
Car Park	TAC 49	This type is intended to describe large stand-alone car parks over 0.5 Ha. Smaller examples will be included in associated polygons.
Civil Airfield	TAC 90	Airfields and airports used for civil aviation of all kinds, from international air travel to recreational use by gliding clubs. Disused military airfields are often re-opened as civil facilities.
Railway Station	TAC 182	Larger railway stations. These will often include associated carparks.
Road Junction	TAC 85	Intersection of major roads covering an area of greater than 0.5 Ha. Junctions of this kind are usually associated with motorways and dual carriageways, and are characterised by the presence of slip roads or large roundabouts.
Service Station	TAC 89	Refuelling and Maintenance points for motor vehicles. Range in size from small urban examples to large motorway stations.
Sidings	TAC 87	Railway features often found in association with large industrial features. Used for the storage, loading and unloading of cargo.

Unenclosed Land (UNE)



Total Area	2835ha
Percentage of Project Area	1.17%
No of polygons	306
Average polygon size	9.26ha

Unenclosed land, though once plentiful; forms a small portion of the current landscape. It consists of generally unimproved land, not subject to agricultural cultivation and enclosure. This Broad Type is more frequently used as a Past Type, however there is a marked concentration of the type in the present landscape in the northern area of the Wolds. This concentration represents the steep valley sides, where the enclosure boundaries follow the top edge of the slope leaving the scarp as unimproved grassland, predominantly used for grazing and potentially small relict portions of former sheep-walk.

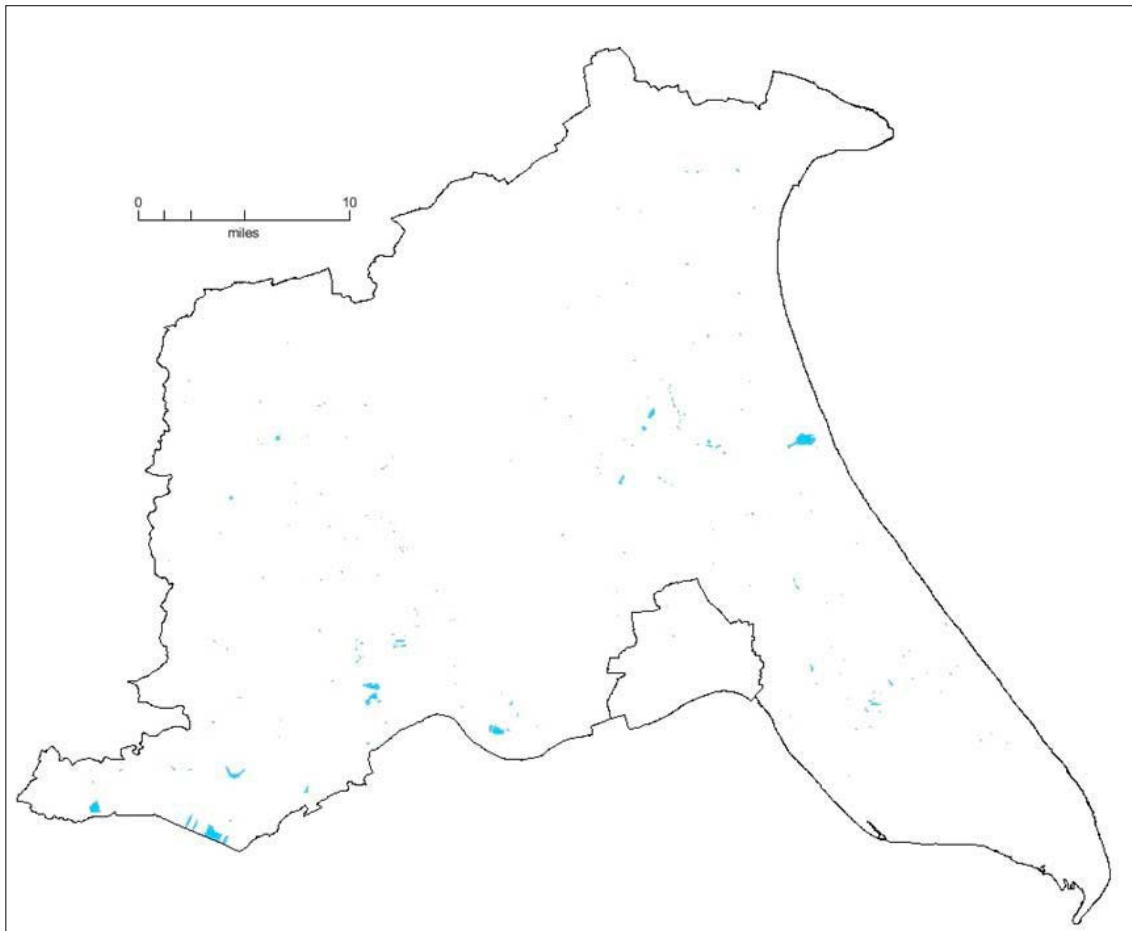
As a Past Type, Unenclosed land forms an economically important part of the landscape, principally as Common Pasture/Meadow.

Current Registered Commons were identified and polygonised with the aid of data from Natural England's dataset of 'Registered Common Land'. There is a concentration of Registered Common Land in the environs of Beverley, which

constitutes the majority of Registered Common Land within the Project Area. Further examples are sparsely distributed and of small dimension.

HLC CHARACTER TYPE	CODE	SCOPE NOTE
Common: Fenland	UNE 13	Uncultivated low-lying wetland landscape with vegetation dominated by grasses. Continually waterlogged by the flow of fresh water from inland towards the sea. As a past type usually identified from map data and place-name evidence. Potentially used for summer grazing, foraging, wildfowling, turf-digging and reed gathering.
Common: Heathland	UNE 12	Uncultivated land dominated by shrubs, on mineral soils. As a past type usually identified from map data and place-name evidence. Used for grazing and foraging.
Common: Inland Marshland	UNE 14	Uncultivated low-lying wetland landscape with vegetation dominated by grasses. Periodically waterlogged by rainfall, springs and obstructed rivers. As a past type usually identified from map data and place-name evidence. Used for summer grazing, foraging and wildfowling.
Common: Pasture/Meadow	UNE 199	Unimproved species-rich grassland managed as grazing and/or hay cropping, with rights of common.
Rabbit Warren	UNE 15	Area of land given over to the raising of rabbits during medieval times. These will be identified primarily through place name evidence e.g. Coney Garth or Warren
Rough grassland/scrub	UNE 97	Area of rough grassland/scrub which has not been taken into enclosed land. Often enclosed by default as it represents a small area left out, particularly on the Wolds escarpments.
Water Meadow	UNE 16	Area of wetland grazing adjacent to a river or stream. Indicated by place name evidence, such as 'Ings' or 'Meadows'.

Water and Wetlands (WAW)



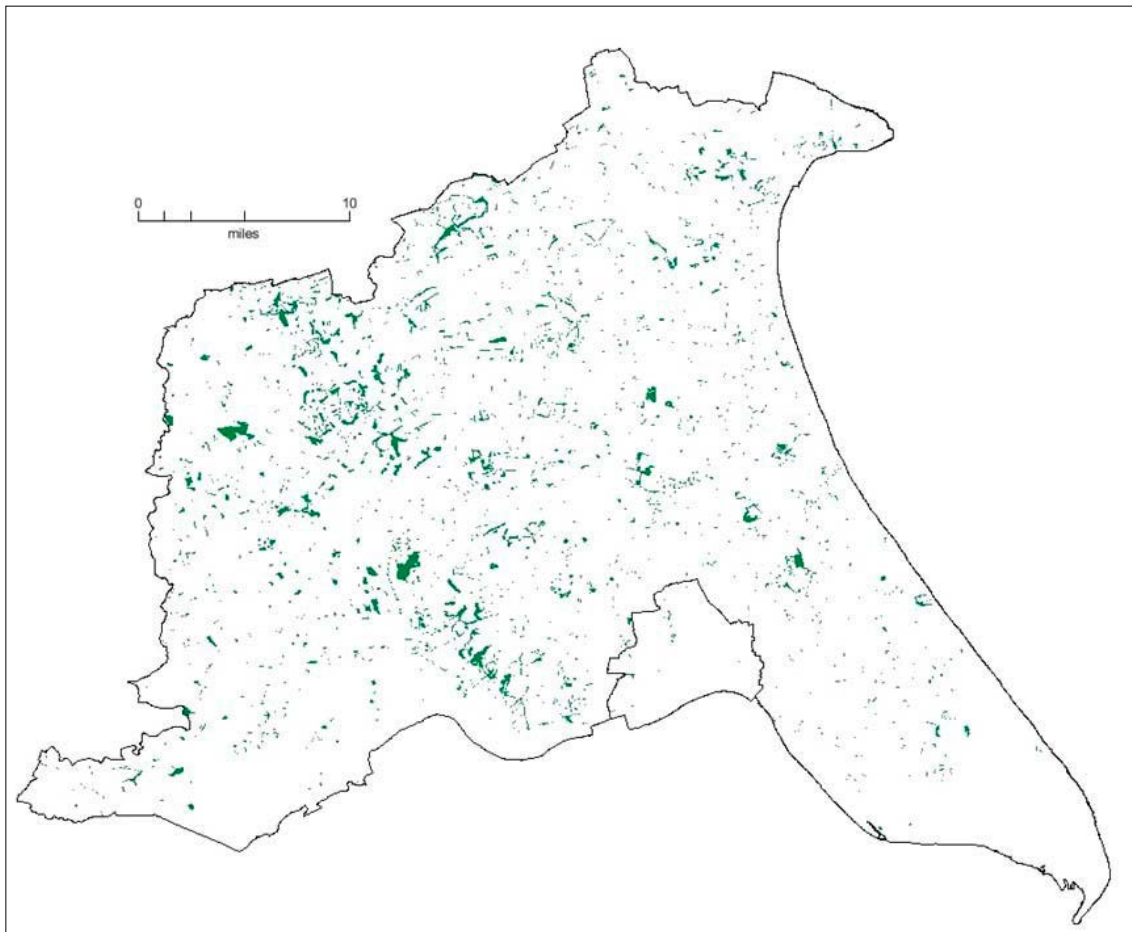
Total Area	782 Ha
Percentage of Project Area	0.32%
No of polygons	269
Average polygon size	2.90ha

The Water and Wetlands Broad Type was used to categorise non-linear bodies of open water, which are not within specific recreational use in an organised or commercial fashion. They may be natural, man-made and part of the water service industry. Watercourses too small to be utilised as part of networks of transport and communication were used as polygon boundaries, in the same manner as roads and canals (see above).

The distribution of this type within the Project Area correlates well with areas of previous Extractive use. There is one large example of Natural Open Water as a current HLC Character Type within the area, which is Hornsea Mere, a sole survivor of a number of glacial lakes which were once present within the Project Area.

HLC CHARACTER TYPE	CODE	SCOPE NOTE
Artificial Open Water	WAW 33	This type includes reservoirs, irrigation ponds, settling pools and quarry pits, without secondary use.
Marsh	WAW 37	Areas recorded on OS mapping as marsh. This can be either a previous or current type. Marshes with rights of common are recorded as 'Common:Marshland' in the unenclosed land type.
Natural Open Water	WAW 34	Bodies of water formed through natural process, such as glacial lakes.
Ornamental Open Water	WAW 35	Bodies of water created or modified primarily for the purposes of landscaping.
Raised Mire	WAW 36	Areas of unimproved peat land, where peat accumulation has gradually risen above the local groundwater level. Such areas are often associated with rich wetland habitats.

Woodland (WDL)



Total Area	6492ha
Percentage of Project Area	2.69%
No of polygons	3043
Average polygon size	2.13ha

This Broad Type contains areas of land that are covered with trees, with the exception of Orchards, which are contained within the Horticulture and Agriculture Broad Type.

The Project Area overall has very low woodland cover at 2.69 %, compared to 10% in England as a whole (according to the Forestry Commission statistics released in June 2016). No part of the Project Area is particularly densely wooded, although there is a concentration of Plantation Woodland within the north-eastern area of the Wolds in the Western Wolds Dry Valley Character Area, where the steep valley sides have been planted, due to unsuitability for other forms of cultivation.

The date of origin of the type ranges from Ancient/Semi Natural Woodland, potentially present in the medieval period, to recently-planted woodland for either commercial or ornamental purposes.

Ancient/Semi Natural Woodland was identified and polygonised with the aid of data from Natural England's Ancient Woodland Inventory Dataset. There is a paucity of

Ancient/Semi Natural Woodland within the Project Area, and even at the time of the Domesday Survey in 1086, the Project Area was relatively sparsely wooded, with woodland area in the East Riding of Yorkshire at 4.4% (Rackham 1976). Some of surviving Ancient/Semi Natural Woodland have been fortuitously preserved by either being incorporated into part of an Estate landscape (Low Wood, Wassand) or due to being located on common land (Burton Bushes, Beverley Westwood).

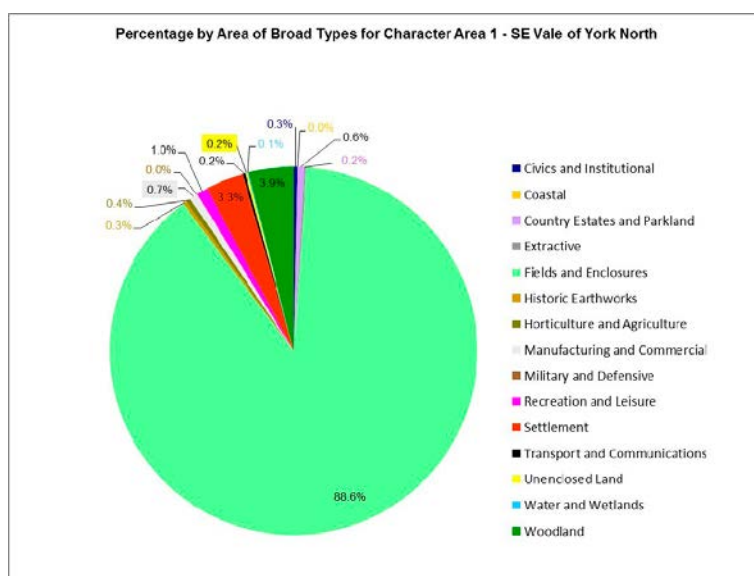
HLC CHARACTER TYPE	CODE	SCOPE NOTE
Ancient/Semi Natural Woodland	WDL 38	Woods classified by English Nature as 'Ancient Semi- Natural'. This type is derived from the National Inventory of Woodland and Trees dataset supplied by English Nature, and defined as continuously wooded since at least 1600 AD. Also small areas of possible type not on the EN dataset.
Coverts	WDL 40	Areas of plantation woodland specifically planted to provide cover for foxes and other game animals. These often form part of a wider hunting landscape.
Estate Woodland	WDL 41	Ornamental woodland planted as part of landscaping projects, usually in the 18th and 19th centuries. Such woodlands often define the boundaries of a major country estate.
Other Woodland	WDL 42	Areas of woodland that do not fit into the other categories.
Plantation Woodland	WDL 39	Woods identified as plantations from morphology or name.

APPENDIX B: CHARACTER AREA ANALYSIS REPORTS AND PIE CHARTS

N.B: Where the 'Total Area' is less than 1ha, this appears as 0 in the following reports and 0.0% in the accompanying pie-charts

B.1 Character Area 1 – SE Vale of York North

Number of records	2490
Total Area	17,913ha
Percentage of Project Area	7.4%



SE Vale of York North – Area Analysis Report

	Count	Total Area (ha)
Civics and Institutional		
Emergency Services	3	0
Health Centre	2	0
Institutional Residence	2	1
Municipal and Private Cemeteries	6	3
Places of Religious Worship	21	1
Prison	1	24
Recycling Centre	1	0
School	15	30
Totals Civics and Institutional	51	59
Country Estates and Parkland		
Country House	6	2
Estate Buildings	6	1
Formal Gardens	2	0
Landscape Park	15	103
Totals Country Estates and Parkland	29	106

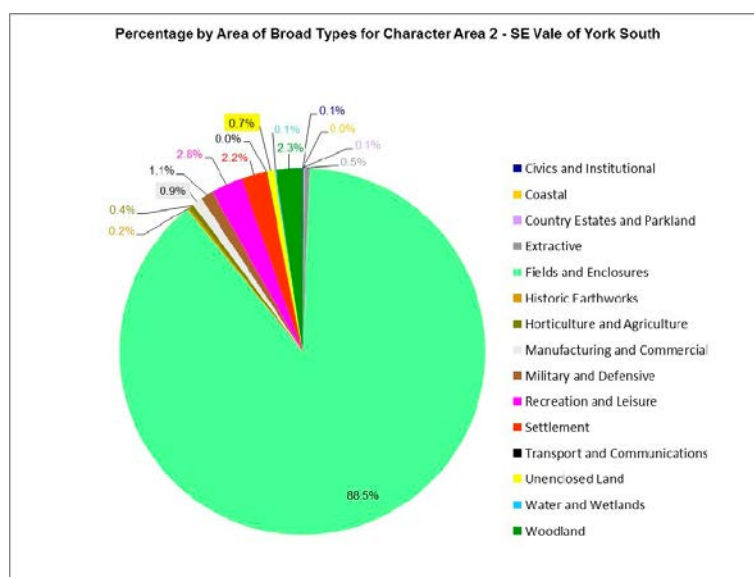
	Count	Total Area (ha)
Extractive		
Chalk Quarry	1	6
Landfill	1	7
Reinstated Land	4	13
Sand and Gravel Quarry	2	7
Totals Extractive	8	33
Fields and Enclosures		
Early Enclosure	126	601
Estate Fields	9	114
Modern Fields	484	10472
Parliamentary Planned Enclosure	315	3499
Private Planned Enclosure	93	960
Re-organised Early Enclosure	20	233
Totals Fields and Enclosures	1047	15879
Historic Earthworks		
Medieval Manorial Site	10	21
Medieval Village Earthworks	13	34
Totals Historic Earthworks	23	55
Horticulture and Agriculture		
Allotment Gardens	4	10
Intensive Livestock Farming	17	28
Nurseries	14	38
Totals Horticulture and Agriculture	35	76
Manufacturing and Commercial		
Derelict Industrial Land	1	0
Electricity Related Infrastructure	4	9
Factory	2	1
Fuel Distribution	1	0
General Commercial	8	6
General Industrial	4	11
Industrial Estate/Retail Park	6	95
Mill Complex	3	2
Supermarket	3	2
Vehicle Storage	1	1
Warehouses	1	0
Water Treatment	4	2
Totals Manufacturing and Commercial	38	129

	Count	Total Area (ha)
Recreation and Leisure		
Campsite	5	26
Golf Course	3	42
Hotel Complex	2	1
Leisure/Sports Centre	1	0
Nature Reserve	4	46
Other Recreational	2	2
Public Parks and Gardens	1	3
Recreation Ground	8	3
Recreational Fishing Pond	3	9
Sports Field and Courts	18	40
Static Caravan/Chalet Park	3	4
Totals Recreation and Leisure	50	176
Settlement		
Detached Housing (C18th)	7	2
Detached Housing (C19th)	41	5
Detached Housing (C20th)	195	48
Detached Housing (C21st)	10	0
Empty Housing Plot	3	1
Flats and Apartments	9	0
High Status Residence	9	7
Historic Settlement Core	51	113
Isolated Farm Complex	218	169
Mixed 20th Century	33	3
Planned Residential Development	149	208
Semi Detached Housing (Pre WWII)	15	0
Semi-detached Housing (C21st)	3	0
Semi-detached Housing (WWII - C20th)	44	15
Terraced Housing (C19th)	10	0
Terraced Housing (C20th)	21	0
Terraced Housing (C21st)	4	1
Village Farm Complex	86	26
Totals Settlement	908	598
Transport and Communications		
Bus Station	1	0
Canal lock/basin	5	1
Car Park	1	0
Civil Airfield	2	39
Railway Station	8	1
Service Station	6	2
Totals Transport and Communications	23	43

	Count	Total Area (ha)
Unenclosed Land		
Rough grassland/scrub	7	36
Totals Unenclosed Land	7	36
Water and Wetlands		
Artificial Open Water	22	18
Ornamental Open Water	1	2
Totals Water and Wetlands	23	20
Woodland		
Ancient/Semi Natural Woodland	2	19
Coverts	6	23
Estate Woodland	15	45
Other Woodland	30	66
Plantation Woodland	195	550
Totals Woodland	248	703

B.2 Character Area 2 – SE Vale of York South

Number of records	3600
Total area	23,380ha
Percentage of Project Area	9.7%



SE Vale of York South – Area Analysis Report

	Count	Total Area (ha)
Civics and Institutional		
Emergency Services	3	0
Health Centre	1	0
Higher/Further Education Establishment	1	0
Institutional Residence	1	5
Municipal and Private Cemeteries	7	0
Places of Religious Worship	18	2
School	13	7
Totals Civics and Institutional	44	14
Country Estates and Parkland		
Country House	2	1
Estate Buildings	6	1
Kitchen Gardens	2	0
Landscape Park	6	19
Totals Country Estates and Parkland	16	21
Extractive		
Landfill	2	49
Reinstated Land	2	28
Sand and Gravel Quarry	5	42
Totals Extractive	9	119

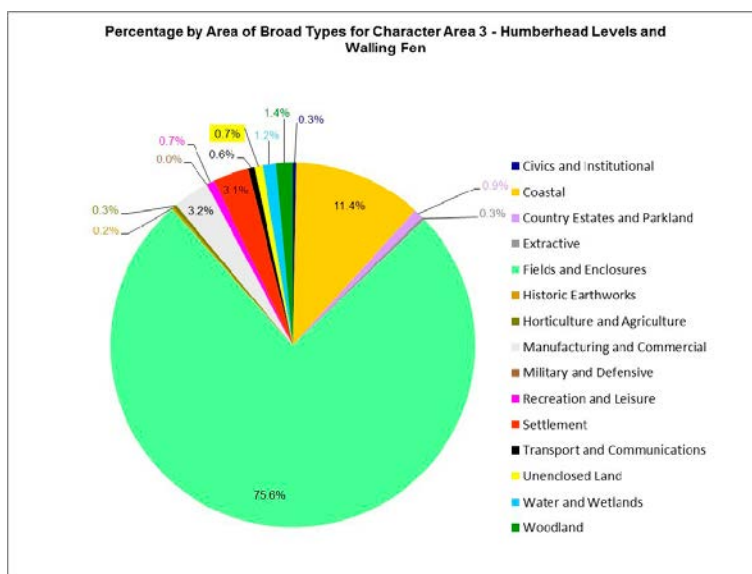
	Count	Total Area (ha)
Fields and Enclosures		
Early Enclosure	176	370
Estate Fields	8	114
Modern Fields	634	13955
Parliamentary Planned Enclosure	486	4560
Private Planned Enclosure	120	1512
Re-organised Early Enclosure	16	183
Totals Fields and Enclosures	1440	20694
Historic Earthworks		
Medieval Manorial Site	17	18
Medieval Religious Complex	3	9
Medieval Village Earthworks	7	16
Motte and Bailey	1	3
Other Historic Earthwork	1	0
Totals Historic Earthworks	29	46
Horticulture and Agriculture		
Allotment Gardens	1	1
Intensive Livestock Farming	12	24
Nurseries	28	77
Orchards	2	0
Totals Horticulture and Agriculture	43	102
Manufacturing and Commercial		
Brick and Tile Works	3	4
Derelict Industrial Land	4	4
Electricity Related Infrastructure	3	0
Factory	6	45
Fuel Distribution	2	3
General Commercial	28	34
General Industrial	3	10
Industrial Estate/Retail Park	6	60
Mill Complex	9	1
Supermarket	1	1
Timber Yard	4	14
Vehicle Storage	1	0
Warehouses	1	1
Water Treatment	8	34
Totals Manufacturing and Commercial	79	211

	Count	Total Area (ha)
Military and Defensive		
Castle	1	0
Military Airfield	3	118
Military Base	2	1
Missile Base	1	138
Totals Military and Defensive	7	257
Recreation and Leisure		
Campsite	3	6
Golf Course	2	140
Hotel Complex	2	3
Nature Reserve	29	219
Other Recreational	8	13
Recreation Ground	3	1
Recreational Fishing Pond	13	106
Sports Field and Courts	13	44
Static Caravan/Chalet Park	6	122
Totals Recreation and Leisure	79	654
Settlement		
Detached Housing (C18th)	16	0
Detached Housing (C19th)	127	11
Detached Housing (C20th)	397	46
Detached Housing (C21st)	43	4
Domestic Garden	1	0
Empty Housing Plot	2	0
Flats and Apartments	2	0
High Status Residence	11	4
Historic Settlement Core	99	102
Isolated Farm Complex	292	182
Mixed 20th Century	89	15
Planned Residential Development	133	104
Semi Detached Housing (Pre WWII)	33	0
Semi-detached Housing (WWII - C20th)	64	8
Terraced Housing (C18th)	1	0
Terraced Housing (C19th)	15	0
Terraced Housing (C20th)	14	0
Terraced Housing (C21st)	1	0
Village Farm Complex	157	46
Totals Settlement	1497	522

	Count	Total Area (ha)
Transport and Communications		
Canal lock/basin	6	5
Railway Station	8	4
Service Station	9	2
Totals Transport and Communications	23	11
Unenclosed Land		
Common: Heathland	2	40
Rough grassland/scrub	26	57
Water Meadow	5	61
Totals Unenclosed Land	33	158
Water and Wetlands		
Artificial Open Water	46	35
Ornamental Open Water	2	0
Totals Water and Wetlands	48	35
Woodland		
Ancient/Semi Natural Woodland	3	17
Coverts	9	25
Estate Woodland	8	11
Other Woodland	46	87
Plantation Woodland	187	396
Totals Woodland	253	536

B.3 Character Area 3 – Humberhead Levels and Walling Fen

Number of records	2345
Total area	17,146ha
Percentage of Project Area	7.1%



Humberhead Levels and Walling Fen – Area Analysis Report

	Count	Total Area (ha)
Civics and Institutional		
Emergency Services	2	0
Health Centre	4	0
Higher/Further Education Establishment	1	2
Hospital	2	9
Institutional Residence	5	1
Municipal and Private Cemeteries	5	10
Municipal Buildings	2	0
Places of Religious Worship	15	0
Recycling Centre	1	0
School	23	30
Totals Civics and Institutional	60	52
Coastal		
Coastal Management	1	2
Mud Flats	2	489
Salt Marsh	9	1468
Totals Coastal	12	1959

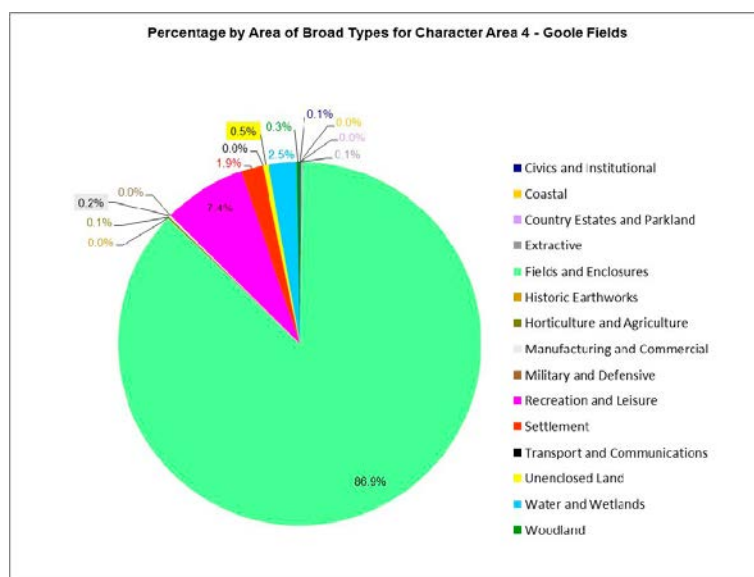
	Count	Total Area (ha)
Country Estates and Parkland		
Country House	7	8
Estate Buildings	7	1
Formal Gardens	1	1
Kitchen Gardens	3	0
Landscape Park	15	136
Totals Country Estates and Parkland	33	146
Extractive		
Clay Pit	1	20
Reinstated Land	4	23
Sand and Gravel Quarry	1	8
Totals Extractive	6	51
Fields and Enclosures		
Early Enclosure	88	406
Estate Fields	14	238
Modern Fields	421	9859
Parliamentary Planned Enclosure	214	2024
Private Planned Enclosure	38	411
Re-organised Early Enclosure	5	26
Totals Fields and Enclosures	780	12964
Historic Earthworks		
Medieval Manorial Site	8	15
Medieval Village Earthworks	3	14
Totals Historic Earthworks	11	29
Horticulture and Agriculture		
Allotment Gardens	18	7
Intensive Livestock Farming	7	8
Nurseries	12	41
Totals Horticulture and Agriculture	37	56
Manufacturing and Commercial		
Brick and Tile Works	2	10
Chemical Works	1	11
Derelict Industrial Land	3	13
Docks, Wharves and Havens	14	31
Factory	9	74
Fuel Distribution	4	14
General Commercial	47	98
General Industrial	4	6

	Count	Total Area (ha)
Industrial Estate/Retail Park	16	189
Mill Complex	6	3
Shopping Centre	1	1
Supermarket	3	2
Timber Yard	3	25
Warehouses	10	63
Water Treatment	14	10
Totals Manufacturing and Commercial	137	550
Military and Defensive		
Military Base	2	1
Totals Military and Defensive	2	1
Recreation and Leisure		
Hotel Complex	1	3
Leisure/Sports Centre	2	1
Marina	3	8
Nature Reserve	4	29
Other Recreational	9	15
Public Parks and Gardens	1	0
Recreation Ground	12	29
Recreational Fishing Pond	2	6
Sports Field and Courts	12	32
Sports Stadium	1	2
Totals Recreation and Leisure	47	125
Settlement		
Detached Housing (C18th)	4	0
Detached Housing (C19th)	58	2
Detached Housing (C20th)	196	27
Detached Housing (C21st)	16	1
Domestic Garden	1	4
Empty Housing Plot	12	2
Flats and Apartments	8	0
High Status Residence	3	2
Historic Settlement Core	80	56
Isolated Farm Complex	126	67
Mixed 20th Century	103	26
Planned Residential Development	169	243
Semi Detached Housing (Pre WWII)	56	28
Semi-detached Housing (C21st)	1	0
Semi-detached Housing (WWII - C20th)	64	20
Terraced Housing (C19th)	48	22
Terraced Housing (C20th)	41	18

	Count	Total Area (ha)
Terraced Housing (C21st)	2	0
Village Farm Complex	49	21
Totals Settlement	1037	539
Transport and Communications		
Canal lock/basin	5	1
Car Park	2	0
Civil Airfield	1	87
Railway Station	6	2
Road Junction	2	5
Service Station	5	2
Totals Transport and Communications	21	97
Unenclosed Land		
Rough grassland/scrub	9	121
Totals Unenclosed Land	9	121
Water and Wetlands		
Artificial Open Water	25	162
Marsh	5	46
Ornamental Open Water	1	0
Totals Water and Wetlands	31	208
Woodland		
Ancient/Semi Natural Woodland	1	7
Coverts	1	1
Estate Woodland	11	9
Other Woodland	31	84
Plantation Woodland	78	147
Totals Woodland	122	248

B.4 Character Area 4 – Goole Fields

Number of records	571
Total area	8,109ha
Percentage of Project	Area 3.4%



Goole Fields – Area Analysis Report

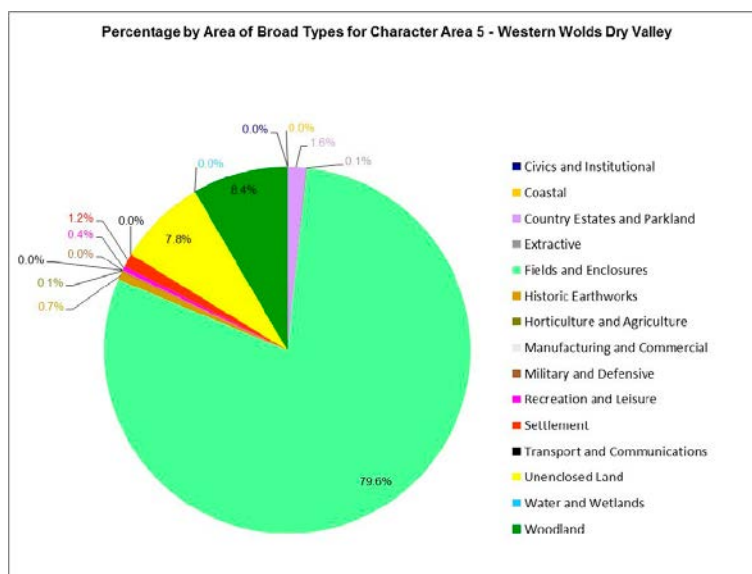
	Count	Total Area (ha)
Civics and Institutional		
Municipal and Private Cemeteries	1	0
Places of Religious Worship	4	2
School	4	5
Totals Civics and Institutional	9	7
Country Estates and Parkland		
Country House	1	3
Estate Buildings	1	1
Totals Country Estates and Parkland	2	4
Extractive		
Landfill	1	7
Totals Extractive	1	7
Fields and Enclosures		
Early Enclosure	79	1203
Estate Fields	1	20
Modern Fields	132	5296
Parliamentary Planned Enclosure	39	482
Re-organised Early Enclosure	5	44
Totals Fields and Enclosures	256	7045

	Count	Total Area (ha)
Historic Earthworks		
Medieval Manorial Site	1	2
Totals Historic Earthworks	1	2
Horticulture and Agriculture		
Allotment Gardens	3	5
Intensive Livestock Farming	1	3
Nurseries	1	2
Totals Horticulture and Agriculture	5	10
Manufacturing and Commercial		
Derelict Industrial Land	2	7
Factory	1	4
General Commercial	3	2
Industrial Estate/Retail Park	1	2
Mill Complex	3	0
Totals Manufacturing and Commercial	10	15
Recreation and Leisure		
Campsite	1	0
Nature Reserve	5	588
Other Recreational	2	3
Recreation Ground	2	4
Recreational Fishing Pond	3	3
Sports Field and Courts	1	0
Totals Recreation and Leisure	14	598
Settlement		
Detached Housing (C18th)	1	0
Detached Housing (C19th)	12	1
Detached Housing (C20th)	52	10
Detached Housing (C21st)	4	2
Empty Housing Plot	8	2
Flats and Apartments	1	0
High Status Residence	1	0
Historic Settlement Core	25	40
Isolated Farm Complex	66	60
Mixed 20th Century	11	6
Planned Residential Development	12	12
Semi Detached Housing (Pre WWII)	3	1
Semi-detached Housing (WWII - C20th)	8	6
Terraced Housing (C19th)	8	5
Terraced Housing (C20th)	9	3
Village Farm Complex	29	9
Totals Settlement	250	157

	Count	Total Area (ha)
Transport and Communications		
Bus Depot	1	0
Totals Transport and Communications	1	0
Unenclosed Land		
Common: Pasture/Meadow	5	40
Totals Unenclosed Land	5	40
Water and Wetlands		
Artificial Open Water	3	12
Marsh	1	44
Raised Mire	4	145
Totals Water and Wetlands	8	201
Woodland		
Other Woodland	4	15
Plantation Woodland	5	8
Totals Woodland	9	23

B.5 Character Area 5 – Western Wolds Dry Valley

Number of records	1702
Total area	19,745ha
Percentage of Project Area	8.2%



Western Wolds Dry Valley – Area Analysis Report

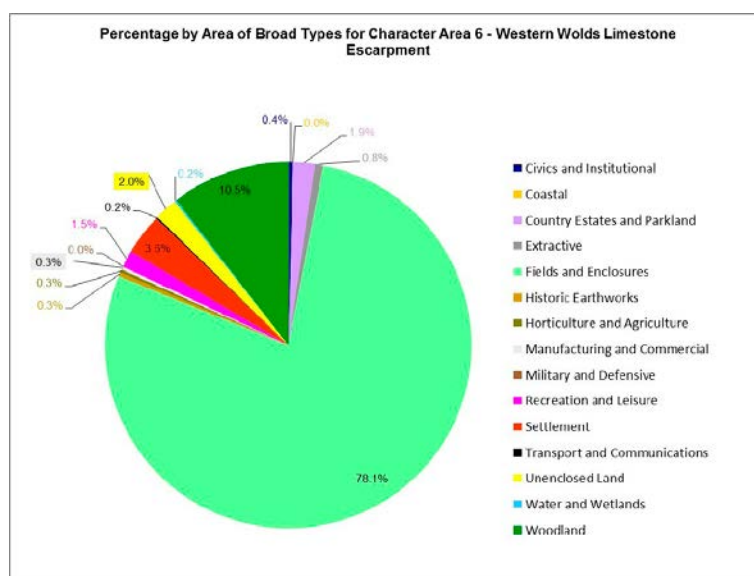
	Count	Total Area (ha)
Civics and Institutional		
Higher/Further Education Establishment	1	0
Places of Religious Worship	17	0
School	3	0
Totals Civics and Institutional	21	0
Country Estates and Parkland		
Country House	3	1
Estate Buildings	9	3
Formal Gardens	3	3
Kitchen Gardens	3	4
Landscape Park	12	309
Totals Country Estates and Parkland	30	320
Extractive		
Chalk Quarry	6	18
Totals	Extractive	6
Fields and Enclosures		
Early Enclosure	60	267
Estate Fields	14	187
Modern Fields	265	7796
Parliamentary Planned Enclosure	265	6270

	Count	Total Area (ha)
Private Planned Enclosure	46	1051
Re-organised Early Enclosure	13	144
Totals Fields and Enclosures	663	15715
Historic Earthworks		
Medieval Manorial Site	2	3
Medieval Religious Complex	3	25
Medieval Village Earthworks	27	116
Totals Historic Earthworks	32	144
Horticulture and Agriculture		
Allotment Gardens	1	0
Intensive Livestock Farming	11	23
Totals Horticulture and Agriculture	12	23
Manufacturing and Commercial		
General Commercial	3	1
General Industrial	1	3
Mill Complex	1	0
Water Treatment	5	1
Totals Manufacturing and Commercial	10	5
Recreation and Leisure		
Campsite	2	0
Golf Course	1	56
Nature Reserve	1	6
Other Recreational	2	0
Recreational Fishing Pond	2	5
Sports Field and Courts	5	9
Totals Recreation and Leisure	13	76
Settlement		
Detached Housing (C18th)	1	0
Detached Housing (C19th)	27	3
Detached Housing (C20th)	52	4
Detached Housing (C21st)	1	0
High Status Residence	3	2
Historic Settlement Core	27	60
Isolated Farm Complex	120	137
Mixed 20th Century	11	1
Planned Residential Development	12	6
Semi Detached Housing (Pre WWII)	14	0
Semi-detached Housing (C21st)	2	0
Semi-detached Housing (WWII - C20th)	16	0

	Count	Total Area (ha)
Terraced Housing (C19th)	5	0
Terraced Housing (C20th)	3	0
Village Farm Complex	56	24
Totals Settlement	350	237
Transport and Communications		
Service Station	1	0
Totals Transport and Communications	1	0
Unenclosed Land		
Common: Pasture/Meadow	2	29
Rough grassland/scrub	127	1513
Totals Unenclosed Land	129	1542
Water and Wetlands		
Artificial Open Water	3	0
Ornamental Open Water	5	9
Totals Water and Wetlands	8	9
Woodland		
Ancient/Semi Natural Woodland	7	93
Coverts	5	12
Estate Woodland	44	190
Other Woodland	15	15
Plantation Woodland	356	1346
Totals Woodland	427	1656

B.6 Character Area 6 – Western Wolds Limestone Escarpment

Number of records	1630
Total area	7,664ha
Percentage of Project Area	3.2%



Western Wolds Limestone Escarpment – Area Analysis Report

	Count	Total Area (ha)
Civics and Institutional		
Health Centre	1	0
Institutional Residence	1	0
Municipal and Private Cemeteries	6	1
Places of Religious Worship	10	0
Prison	2	16
School	7	14
Totals Civics and Institutional	27	31
Country Estates and Parkland		
Country House	5	3
Estate Buildings	11	1
Formal Gardens	2	7
Kitchen Gardens	5	1
Landscape Park	19	134
Totals Country Estates and Parkland	42	146
Extractive		
Chalk Quarry	4	49
Limestone Quarry	1	2
Reinstated Land	1	7
Totals Extractive	6	58

	Count	Total Area (ha)
Fields and Enclosures		
Early Enclosure	114	236
Estate Fields	13	108
Modern Fields	154	2874
Parliamentary Planned Enclosure	170	2103
Private Planned Enclosure	30	587
Re-organised Early Enclosure	9	77
Totals Fields and Enclosures	490	5985
Historic Earthworks		
Medieval Manorial Site	1	2
Medieval Village Earthworks	9	24
Totals Historic Earthworks	10	26
Horticulture and Agriculture		
Allotment Gardens	3	1
Intensive Livestock Farming	1	2
Nurseries	6	19
Orchards	1	0
Totals Horticulture and Agriculture	11	22
Manufacturing and Commercial		
Fuel Distribution	1	0
General Commercial	19	20
Mill Complex	5	0
Timber Yard	1	0
Vehicle Storage	1	1
Water Treatment	3	0
Totals Manufacturing and Commercial	30	21
Recreation and Leisure		
Campsite	1	0
Golf Course	5	91
Hotel Complex	1	2
Leisure/Sports Centre	1	0
Recreation Ground	2	0
Sports Field and Courts	6	22
Totals Recreation and Leisure	16	115
Settlement		
Detached Housing (C18th)	2	0
Detached Housing (C19th)	46	8
Detached Housing (C20th)	222	32
Detached Housing (C21st)	9	0

	Count	Total Area (ha)
Domestic Garden	2	7
Empty Housing Plot	3	0
Flats and Apartments	4	0
High Status Residence	2	2
Historic Settlement Core	53	80
Isolated Farm Complex	59	37
Mixed 20th Century	42	14
Planned Residential Development	108	83
Semi Detached Housing (Pre WWII)	23	0
Semi-detached Housing (WWII - C20th)	30	0
Terraced Housing (C19th)	4	0
Terraced Housing (C20th)	12	4
Village Farm Complex	63	10
Totals Settlement	684	277

Transport and Communications

Bus Depot	1	0
Civil Airfield	1	2
Railway Station	2	4
Road Junction	1	6
Service Station	1	0
Totals Transport and Communications	6	12

Unenclosed Land

Common: Pasture/Meadow	4	13
Rough grassland/scrub	17	141
Totals Unenclosed Land	21	154

Water and Wetlands

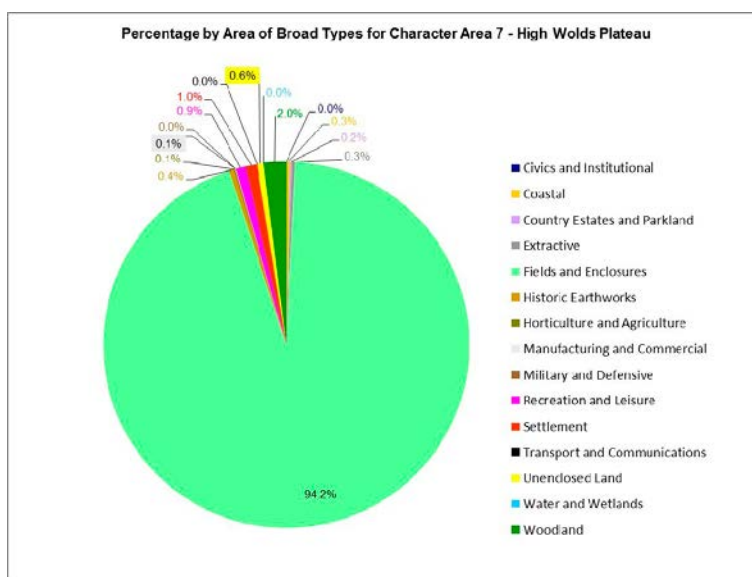
Artificial Open Water	11	10
Ornamental Open Water	5	5
Totals Water and Wetlands	16	15

Woodland

Ancient/Semi Natural Woodland	1	3
Coverts	5	12
Estate Woodland	14	36
Other Woodland	25	23
Plantation Woodland	226	728
Totals Woodland	271	802

B.7 Character Area 7 – High Wolds Plateau

Number of records	2866
Total area	40,322ha
Percentage of Project Area	16.7%



High Wolds Plateau – Area Analysis Report

	Count	Total Area (ha)
Civics and Institutional		
Emergency Services	2	0
Municipal and Private Cemeteries	5	5
Municipal Buildings	3	0
Places of Religious Worship	18	0
School	12	4
Totals Civics and Institutional	40	9
Coastal		
Beach	11	131
Totals Coastal	11	131
Country Estates and Parkland		
Country House	7	0
Estate Buildings	13	2
Formal Gardens	2	4
Kitchen Gardens	3	0
Landscape Park	17	62
Totals Country Estates and Parkland	42	68

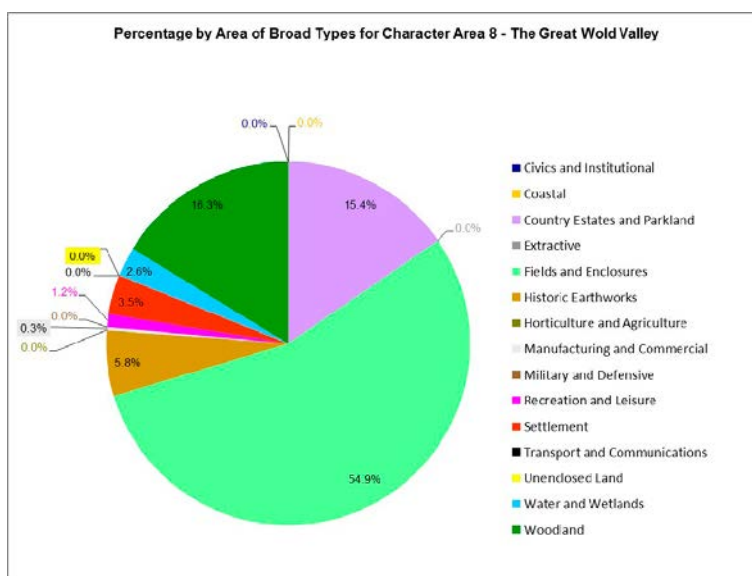
	Count	Total Area (ha)
Extractive		
Chalk Quarry	17	86
Clay Pit	1	0
Reinstated Land	4	19
Sand and Gravel Quarry	2	0
Totals Extractive	24	105
Fields and Enclosures		
Early Enclosure	132	1168
Estate Fields	7	84
Modern Fields	496	18553
Parliamentary Planned Enclosure	549	16689
Private Planned Enclosure	53	1451
Re-organised Early Enclosure	10	40
Totals Fields and Enclosures	1247	37985
Historic Earthworks		
Medieval Manorial Site	1	2
Medieval Village Earthworks	42	138
Other Historic Earthwork	6	15
Totals Historic Earthworks	49	155
Horticulture and Agriculture		
Allotment Gardens	4	2
Crop Storage	7	2
Intensive Livestock Farming	22	53
Nurseries	3	2
Totals Horticulture and Agriculture	36	59
Manufacturing and Commercial		
Derelict Industrial Land	1	0
Electricity Related Infrastructure	1	1
Factory	4	11
Fuel Distribution	1	0
General Commercial	5	1
General Industrial	1	0
Industrial Estate/Retail Park	1	0
Mill Complex	2	0
Timber Yard	1	0
Vehicle Storage	2	1
Water Treatment	16	8
Totals Manufacturing and Commercial	35	22

	Count	Total Area (ha)
Military and Defensive		
Military Base	2	1
Totals Military and Defensive	2	1
Recreation and Leisure		
Campsite	7	16
Golf Course	5	193
Hotel Complex	3	0
Nature Reserve	3	5
Other Recreational	6	1
Public Parks and Gardens	1	0
Recreation Ground	5	2
Recreational Seafront	2	16
Sports Field and Courts	10	12
Static Caravan/Chalet Park	19	102
Totals Recreation and Leisure	61	347
Settlement		
Detached Housing (C18th)	3	0
Detached Housing (C19th)	33	11
Detached Housing (C20th)	203	27
Detached Housing (C21st)	8	2
Empty Housing Plot	1	0
Flats and Apartments	1	0
Historic Settlement Core	42	59
Isolated Farm Complex	226	237
Mixed 20th Century	31	3
Planned Residential Development	43	19
Semi Detached Housing (Pre WWII)	31	1
Semi-detached Housing (C21st)	1	0
Semi-detached Housing (WWII - C20th)	70	17
Terraced Housing (C18th)	1	0
Terraced Housing (C19th)	27	0
Terraced Housing (C20th)	8	0
Village Farm Complex	97	32
Totals Settlement	826	408
Transport and Communications		
Car Park	2	1
Railway Station	9	4
Service Station	1	0
Totals Transport and Communications	12	5

	Count	Total Area (ha)
Unenclosed Land		
Common: Pasture/Meadow	3	58
Rough grassland/scrub	21	176
Totals Unenclosed Land	24	234
Water and Wetlands		
Artificial Open Water	7	0
Natural Open Water	4	0
Totals Water and Wetlands	11	0
Woodland		
Ancient/Semi Natural Woodland	10	59
Coverts	5	29
Estate Woodland	20	39
Other Woodland	25	20
Plantation Woodland	386	646
Totals Woodland	446	793

B.8 Character Area 8 – The Great Wold Valley

Number of records	141
Total area	344ha
Percentage of Project Area	0.1%



The Great Wold Valley – Area Analysis Report

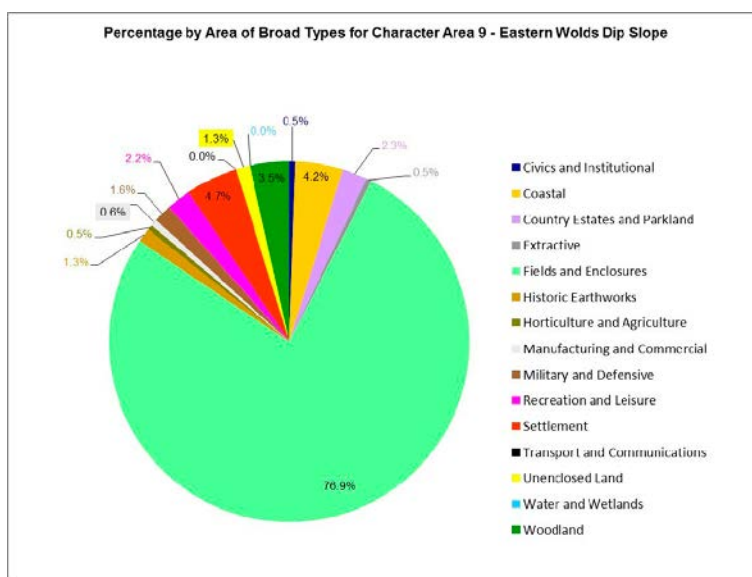
	Count	Total Area (ha)
Civics and Institutional		
Municipal Buildings	1	0
Places of Religious Worship	3	0
School	1	0
Totals Civics and Institutional	5	0
Country Estates and Parkland		
Country House	2	0
Estate Buildings	5	2
Formal Gardens	1	3
Landscape Park	6	48
Totals Country Estates and Parkland	14	53
Extractive		
Clay Pit	1	0
Landfill	1	0
Sand and Gravel Quarry	1	0
Totals Extractive	3	0
Fields and Enclosures		
Early Enclosure	9	23
Estate Fields	1	7
Modern Fields	17	91

	Count	Total Area (ha)
Parliamentary Planned Enclosure	5	47
Private Planned Enclosure	1	21
Totals Fields and Enclosures	33	189
Historic Earthworks		
Medieval Village Earthworks	2	20
Totals Historic Earthworks	2	20
Horticulture and Agriculture		
Crop Storage	1	0
Intensive Livestock Farming	2	0
Totals Horticulture and Agriculture	3	0
Manufacturing and Commercial		
Electricity Related Infrastructure	1	1
General Industrial	1	0
Water Treatment	1	0
Totals Manufacturing and Commercial	3	1
Recreation and Leisure		
Public Parks and Gardens	1	0
Sports Field and Courts	1	2
Static Caravan/Chalet Park	1	2
Totals Recreation and Leisure	3	4
Settlement		
Detached Housing (C18th)	3	0
Detached Housing (C19th)	5	1
Detached Housing (C20th)	17	3
Detached Housing (C21st)	3	0
Historic Settlement Core	2	3
Isolated Farm Complex	2	1
Semi Detached Housing (Pre WWII)	5	0
Semi-detached Housing (WWII - C20th)	8	0
Terraced Housing (C19th)	1	0
Traveller Site	1	0
Village Farm Complex	10	4
Totals Settlement	57	12
Water and Wetlands		
Artificial Open Water	4	9
Totals Water and Wetlands	4	9

	Count	Total Area (ha)
Woodland		
Other Woodland	2	4
Plantation Woodland	12	52
Totals Woodland	14	56

B.9 Character Area 9 – Eastern Wolds Dip Slope

Number of records	3187
Total area	14,781ha
Percentage of Project Area	6.1%



Eastern Wolds Dip Slope – Area Analysis Report

	Count	Total Area (ha)
Civics and Institutional		
Emergency Services	3	1
Health Centre	1	0
Higher/Further Education Establishment	3	39
Hospital	4	6
Institutional Residence	10	1
Law Courts	1	0
Municipal and Private Cemeteries	10	6
Municipal Buildings	1	0
Places of Religious Worship	26	2
Recycling Centre	2	2
School	23	24
Totals for Civics and Institutional	84	81
Coastal		
Mud Flats	3	627
Totals for Coastal	3	627

	Count	Total Area (ha)
Country Estates and Parkland		
Country House	12	2
Deer Park	1	11
Estate Buildings	18	1
Formal Gardens	6	6
Kitchen Gardens	9	4
Landscape Park	24	310
Totals for Country Estates and Parkland	70	334
Extractive		
Chalk Quarry	7	31
Landfill	1	12
Reinstated Land	8	27
Totals for Extractive	16	70
Fields and Enclosures		
Early Enclosure	234	1145
Estate Fields	34	293
Modern Fields	269	6086
Parliamentary Planned Enclosure	294	3489
Private Planned Enclosure	26	310
Re-organised Early Enclosure	6	46
Totals for Fields and Enclosures	863	11369
Historic Earthworks		
Medieval Manorial Site	9	17
Medieval Religious Complex	1	3
Medieval Village Earthworks	44	162
Motte and Bailey	2	2
Other Historic Earthwork	2	2
Totals for Historic Earthworks	58	186
Horticulture and Agriculture		
Allotment Gardens	12	10
Intensive Livestock Farming	9	26
Nurseries	13	37
Total Horticulture and Agriculture	34	73
Manufacturing and Commercial		
Brick and Tile Works	1	1
Derelict Industrial Land	5	0
Electricity Related Infrastructure	2	1
Factory	2	1

	Count	Total Area (ha)
Fuel Distribution	3	2
General Commercial	30	12
Industrial Estate/Retail Park	8	53
Mill Complex	13	7
Supermarket	2	1
Warehouses	3	0
Water Treatment	14	10
Totals for Manufacturing and Commercial	83	88

Military and Defensive

Military Base	3	237
Totals for Military and Defensive	3	237

Recreation and Leisure

Golf Course	5	149
Hotel Complex	4	5
Leisure/Sports Centre	2	3
Nature Reserve	5	29
Other Recreational	5	6
Racecourse	1	47
Recreation Ground	9	16
Recreational Fishing Pond	2	4
Sports Field and Courts	23	57
Sports Stadium	1	1
Static Caravan/Chalet Park	1	5
Totals for Recreation and Leisure	58	322

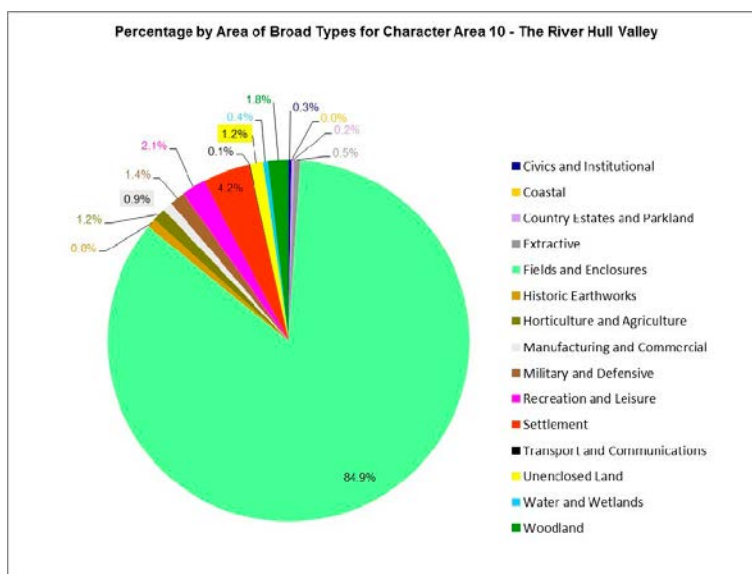
Settlement

Detached Housing (C18th)	8	0
Detached Housing (C19th)	78	9
Detached Housing (C20th)	384	91
Detached Housing (C21st)	29	1
Domestic Garden	2	1
Empty Housing Plot	11	0
Flats and Apartments	5	0
High Status Residence	8	6
Historic Settlement Core	110	102
Isolated Farm Complex	97	95
Mixed 20th Century	126	25
Planned Residential Development	249	281
Semi Detached Housing (Pre WWII)	78	7
Semi-detached Housing (C21st)	3	0
Semi-detached Housing (WWII - C20th)	88	13
Terraced Housing (C19th)	54	0

	Count	Total Area (ha)
Terraced Housing (C20th)	40	1
Traveller Site	2	4
Village Farm Complex	104	52
Totals for Settlement	1476	688
Transport and Communications		
Bus Station	1	0
Canal lock/basin	1	0
Car Park	6	0
Railway Station	6	0
Service Station	9	3
Sidings	1	0
Totals for Transport and Communications	24	3
Unenclosed Land		
Common: Pasture/Meadow	8	161
Rough grassland/scrub	10	24
Totals for Unenclosed Land	18	185
Water and Wetlands		
Artificial Open Water	8	1
Natural Open Water	1	0
Totals for Water and Wetlands	9	1
Woodland		
Ancient/Semi natural Woodland	13	43
Coverts	9	28
Estate Woodland	63	140
Other Woodland	46	67
Plantation Woodland	257	239
Total Woodland	388	517

B.10 Character Area 10 – The River Hull Valley

Number of records	3480
Total area	22,401ha
Percentage of Project Area	9.3%



The River Hull Valley – Area Analysis Report

	Count	Total Area (ha)
Civics and Institutional		
Emergency Services	3	0
Health Centre	3	0
Higher/Further Education Establishment	1	3
Hospital	2	5
Institutional Residence	11	0
Law Courts	1	0
Municipal and Private Cemeteries	6	5
Municipal Buildings	3	2
Places of Religious Worship	22	3
Recycling Centre	1	0
School	31	45
Totals Civics and Institutional	84	63
Country Estates and Parkland		
Country House	5	0
Estate Buildings	9	1
Formal Gardens	2	4
Landscape Park	9	45
Totals Country Estates and Parkland	25	50

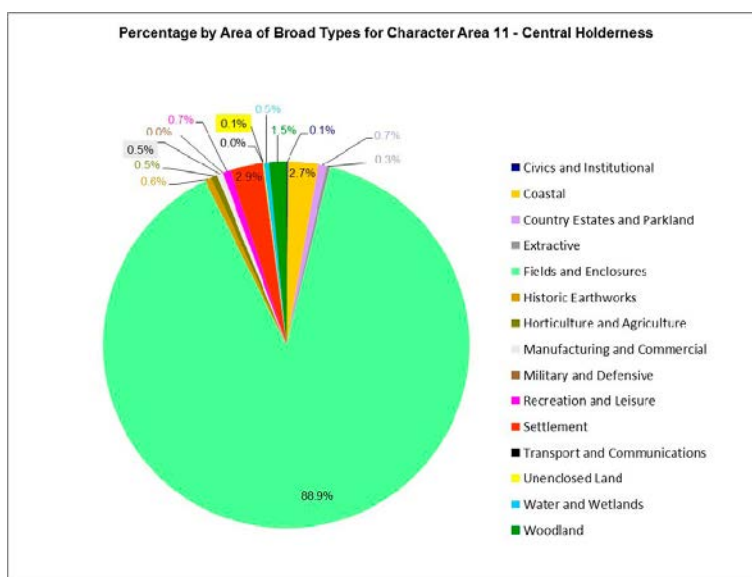
	Count	Total Area (ha)
Extractive		
Chalk Quarry	3	0
Reinstated Land	13	43
Sand and Gravel Quarry	4	77
Totals Extractive	20	120
Fields and Enclosures		
Early Enclosure	221	1188
Estate Fields	2	40
Modern Fields	501	11853
Parliamentary Planned Enclosure	258	3068
Private Planned Enclosure	204	2400
Re-organised Early Enclosure	31	459
Totals Fields and Enclosures	1217	19008
Historic Earthworks		
Medieval Manorial Site	10	9
Medieval Religious Complex	3	68
Medieval Village Earthworks	29	92
Motte and Bailey	1	2
Other Historic Earthwork	4	12
Totals Historic Earthworks	47	183
Horticulture and Agriculture		
Allotment Gardens	12	2
Intensive Livestock Farming	39	129
Nurseries	35	131
Orchards	3	2
Totals Horticulture and Agriculture	89	264
Manufacturing and Commercial		
Brick and Tile Works	2	3
Derelict Industrial Land	2	5
Docks, Wharves and Havens	3	1
Electricity Related Infrastructure	5	9
Factory	11	36
Fuel Distribution	1	0
General Commercial	20	12
General Industrial	1	0
Industrial Estate/Retail Park	20	84
Mill Complex	12	25
Shopping Centre	1	0
Supermarket	4	4

	Count	Total Area (ha)
Vehicle Storage	1	2
Water Treatment	18	14
Totals Manufacturing and Commercial	101	195
Military and Defensive		
Fortress and Public Defence	1	0
Military Base	2	310
Totals Military and Defensive	3	310
Recreation and Leisure		
Campsite	8	43
Golf Course	3	69
Hotel Complex	2	2
Leisure/Sports Centre	1	1
Nature Reserve	5	113
Other Recreational	23	56
Public Parks and Gardens	1	0
Recreation Ground	13	23
Recreational Fishing Pond	31	61
Sports Field and Courts	19	42
Static Caravan/Chalet Park	10	67
Totals Recreation and Leisure	116	477
Settlement		
Detached Housing (C18th)	9	4
Detached Housing (C19th)	69	10
Detached Housing (C20th)	243	46
Detached Housing (C21st)	45	3
Empty Housing Plot	13	5
Flats and Apartments	24	2
High Status Residence	2	3
Historic Settlement Core	97	92
Isolated Farm Complex	210	321
Mixed 20th Century	139	32
Planned Residential Development	242	311
Semi Detached Housing (Pre WWII)	57	13
Semi-detached Housing (C21st)	4	1
Semi-detached Housing (WWII - C20th)	95	23
Terraced Housing (C18th)	2	0
Terraced Housing (C19th)	79	6
Terraced Housing (C20th)	45	2
Terraced Housing (C21st)	1	0
Village Farm Complex	92	68
Totals Settlement	1468	942

	Count	Total Area (ha)
Transport and Communications		
Canal lock/basin	1	0
Car Park	9	0
Civil Airfield	1	15
Railway Station	5	2
Service Station	11	2
Totals Transport and Communications	27	19
Unenclosed Land		
Common: Pasture/Meadow	10	259
Rough grassland/scrub	4	6
Totals Unenclosed Land	14	265
Water and Wetlands		
Artificial Open Water	39	99
Totals Water and Wetlands	39	99
Woodland		
Ancient/Semi Natural Woodland	4	4
Coverts	5	11
Estate Woodland	8	5
Other Woodland	23	24
Plantation Woodland	190	362
Totals Woodland	230	406

B.11 Character Area 11 – Central Holderness

Number of records	5308
Total area	40,187ha
Percentage of Project Area	16.7%



Central Holderness – Area Analysis Report

	Count	Total Area (ha)
Civics and Institutional		
Emergency Services	2	0
Health Centre	1	0
Hospital	1	4
Institutional Residence	3	0
Municipal and Private Cemeteries	11	4
Municipal Buildings	2	6
Places of Religious Worship	50	2
Recycling Centre	3	2
School	30	32
Totals Civics and Institutional	103	50
Coastal		
Beach	3	4
Coastal Management	1	47
Mud Flats	7	998
Salt Marsh	2	23
Totals Coastal	13	1072
Country Estates and Parkland		
Country House	9	0
Estate Buildings	43	4
Formal Gardens	10	20

	Count	Total Area (ha)
Kitchen Gardens	7	3
Landscape Park	21	272
Totals Country Estates and Parkland	90	299
Extractive		
Clay Pit	1	0
Reinstated Land	9	47
Sand and Gravel Quarry	5	73
Totals Extractive	15	120
Fields and Enclosures		
Early Enclosure	489	3119
Estate Fields	15	169
Modern Fields	841	25901
Parliamentary Planned Enclosure	352	3292
Private Planned Enclosure	224	2397
Re-organised Early Enclosure	65	837
Totals Fields and Enclosures	1986	35715
Historic Earthworks		
Medieval Manorial Site	10	12
Medieval Religious Complex	1	0
Medieval Village Earthworks	63	200
Motte and Bailey	2	15
Other Historic Earthwork	1	1
Totals Historic Earthworks	77	228
Horticulture and Agriculture		
Allotment Gardens	16	5
Intensive Livestock Farming	42	99
Nurseries	33	116
Orchards	2	1
Totals Horticulture and Agriculture	93	221
Manufacturing and Commercial		
Brick and Tile Works	2	1
Caravan Production and Storage	1	7
Derelict Industrial Land	4	3
Docks, Wharves and Havens	1	0
Electricity Related Infrastructure	2	0
Factory	5	9
Fuel Distribution	4	3
General Commercial	44	33
General Industrial	6	1

	Count	Total Area (ha)
Industrial Estate/Retail Park	11	141
Mill Complex	10	4
Shopping Centre	1	0
Supermarket	1	1
Timber Yard	1	0
Warehouses	2	0
Water Treatment	13	2
Totals Manufacturing and Commercial	108	205

Military and Defensive

Fortress and Public Defence	1	4
Military Airfield	1	2
Military Base	6	12
Ordnance Depot	1	0
Totals Military and Defensive	9	18

Recreation and Leisure

Campsite	9	9
Golf Course	4	82
Hotel Complex	1	2
Marina	1	2
Nature Reserve	1	10
Other Recreational	26	34
Racecourse	1	14
Recreation Ground	9	3
Recreational Fishing Pond	14	18
Sports Field and Courts	21	50
Static Caravan/Chalet Park	10	46
Totals Recreation and Leisure	97	270

Settlement

Detached Housing (C18th)	11	1
Detached Housing (C19th)	80	9
Detached Housing (C20th)	443	83
Detached Housing (C21st)	52	11
Domestic Garden	3	1
Empty Housing Plot	18	7
Flats and Apartments	6	2
High Status Residence	8	12
Historic Settlement Core	236	121
Isolated Farm Complex	297	362
Mixed 20th Century	197	49
Planned Residential Development	237	241
Semi Detached Housing (Pre WWII)	65	3

	Count	Total Area (ha)
Semi-detached Housing (C21st)	5	0
Semi-detached Housing (WWII - C20th)	129	6
Terraced Housing (C19th)	17	0
Terraced Housing (C20th)	56	1
Terraced Housing (C21st)	11	0
Village Farm Complex	253	255
Totals Settlement	2124	1164

Transport and Communications

Car Park	3	0
Railway Station	13	1
Service Station	13	1
Sidings	2	0
Totals Transport and Communications	31	2

Unenclosed Land

Common: Heathland	1	1
Common: Pasture/Meadow	5	3
Rough grassland/scrub	16	34
Totals Unenclosed Land	22	38

Water and Wetlands

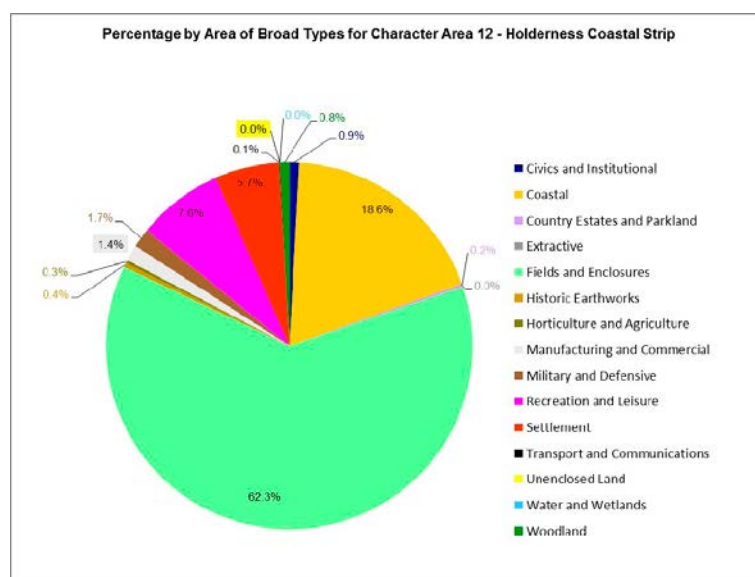
Artificial Open Water	58	64
Marsh	1	0
Natural Open Water	2	118
Totals Water and Wetlands	61	182

Woodland

Ancient/Semi Natural Woodland	15	45
Coverts	12	25
Estate Woodland	73	193
Other Woodland	29	28
Plantation Woodland	350	312
Totals Woodland	479	603

B.12 Character Area 12 – Holderness Coastal Strip

Number of records	3206
Total area	11,701ha
Percentage of Project Area	4.8%



Holderness Coastal Strip – Area Analysis Report

	Count	Total Area (ha)
Civics and Institutional		
Emergency Services	12	1
Health Centre	3	1
Higher/Further Education Establishment	2	3
Hospital	3	8
Institutional Residence	12	1
Law Courts	1	0
Municipal and Private Cemeteries	6	8
Municipal Buildings	3	0
Places of Religious Worship	36	2
Recycling Centre	1	0
School	22	77
Totals for Civics and Institutional	101	101
Coastal		
Beach	86	978
Coastal Management	7	46
Mud Flats	2	1113
Salt Marsh	6	31
Sand Dunes	9	14
Totals for Coastal	110	2182

	Count	Total Area (ha)
Country Estates and Parkland		
Country House	3	0
Estate Buildings	5	0
Formal Gardens	2	1
Kitchen Gardens	1	0
Landscape Park	3	28
Totals for Country Estates and Parkland	14	29
Extractive		
Clay Pit	1	0
Reinstated Land	1	0
Sand and Gravel Quarry	1	0
Totals for Extractive	3	0
Fields and Enclosures		
Early Enclosure	141	696
Estate Fields	5	29
Modern Fields	183	4882
Parliamentary Planned Enclosure	150	1545
Private Planned Enclosure	20	112
Re-organised Early Enclosure	9	30
Totals for Fields and Enclosures	508	7294
Historic Earthworks		
Medieval Manorial Site	29	
Medieval Religious Complex	2	0
Medieval Village Earthworks	17	34
Other Historic Earthwork	1	0
Totals for Historic Earthworks	22	43
Horticulture and Agriculture		
Allotment Gardens	1519	
Intensive Livestock Farming	6	8
Nurseries	6	5
Totals for Horticulture and Agriculture	27	32
Manufacturing and Commercial		
Derelict Industrial Land	4	0
Docks, Wharves and Havens	7	4
Electricity Related Infrastructure	4	0
Factory	2	0
Fuel Distribution	15	113
General Commercial	50	1

	Count	Total Area (ha)
General Industrial	3	2
Industrial Estate/Retail Park	14	31
Mill Complex	6	0
Shopping Centre	3	0
Supermarket	7	5
Warehouses	3	0
Water Treatment	10	9
Total Manufacturing and Commercial	128	165
Military and Defensive		
Air Weapons Range	2	184
Military Base	3	12
Totals for Military and Defensive	5	196
Recreation and Leisure		
Campsite	14	41
Cinema Complex	1	0
Golf Course	6	137
Hotel Complex	9	0
Leisure/Sports Centre	5	1
Nature Reserve	1	293
Other Recreational	25	1
Public Parks and Gardens	19	10
Recreation Ground	15	2
Recreational Fishing Pond	9	10
Recreational Seafront	19	30
Sports Field and Courts	14	27
Sports Stadium	1	2
Static Caravan/Chalet Park	64	334
Totals for Recreation and Leisure	202	888
Settlement		
Detached Housing (C18th)	2	0
Detached Housing (C19th)	81	2
Detached Housing (C20th)	412	29
Detached Housing (C21st)	24	2
Empty Housing Plot	8	0
Flats and Apartments	50	3
High Status Residence	2	0
Historic Settlement Core	85	86
Isolated Farm Complex	86	69
Mixed 20th Century	193	75
Planned Residential Development	201	332
Semi Detached Housing (Pre WWII)	221	3

	Count	Total Area (ha)
Semi-detached Housing (C21st)	5	0
Semi-detached Housing (WWII - C20th)	120	4
Terraced Housing (C19th)	177	4
Terraced Housing (C20th)	181	5
Terraced Housing (C21st)	5	0
Village Farm Complex	97	52
Totals for Settlement	1950	666

Transport and Communications

Bus Depot	3	0
Bus Station	1	0
Car Park	22	7
Railway Station	2	1
Service Station	9	0
Sidings	3	0
Totals for Transport and Communications	40	8

Unenclosed Land

Rough grassland/scrub	3	1
Totals for Unenclosed Land	3	1

Water and Wetlands

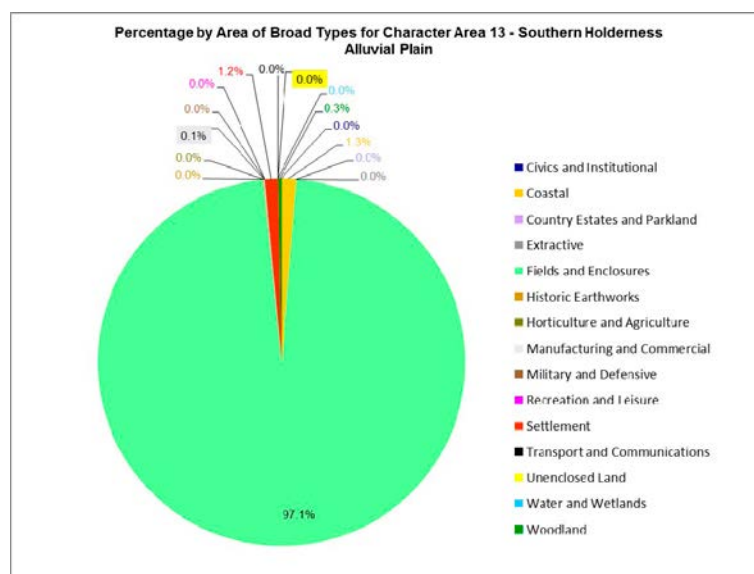
Artificial Open Water	2	0
Marsh	1	2
Ornamental Open Water	1	0
Totals for Water and Wetlands	4	2

Woodland

Coverts	2	3
Estate Woodland	22	33
Other Woodland	3	3
Plantation Woodland	62	55
Totals for Woodland	89	94

B.13 Character Area 13 – South Holderness Alluvial Plain

Number of records	188
Total area	3,186ha
Percentage of Project Area	1.3%



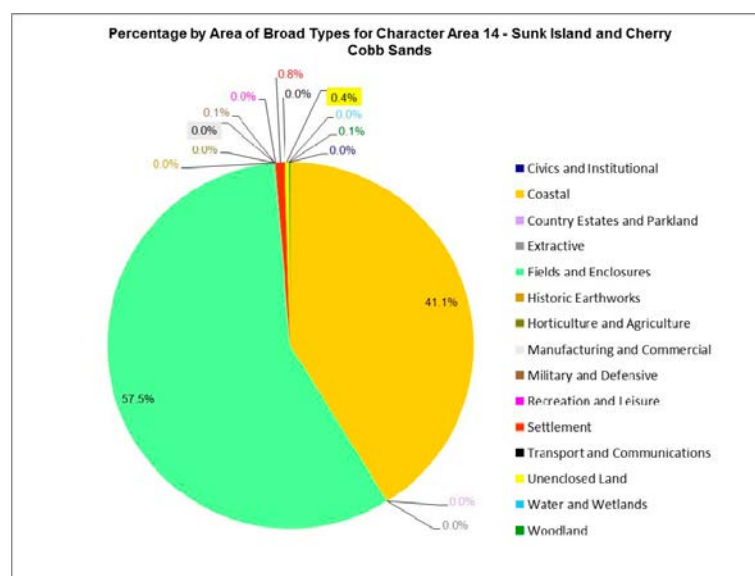
South Holderness Alluvial Plain – Area Analysis Report

	Count	Total Area (ha)
Coastal		
Coastal Management	1	41
Totals Coastal	1	41
Fields and Enclosures		
Early Enclosure	23	248
Modern Fields	64	2099
Parliamentary Planned Enclosure	21	322
Private Planned Enclosure	6	187
Re-organised Early Enclosure	14	237
Totals Fields and Enclosures	128	3093
Historic Earthworks		
Medieval Village Earthworks	3	1
Totals Historic Earthworks	3	1
Horticulture and Agriculture		
Intensive Livestock Farming	1	1
Totals Horticulture and Agriculture	1	1

	Count	Total Area (ha)
Manufacturing and Commercial		
General Commercial	1	2
Water Treatment	1	1
Totals Manufacturing and Commercial	2	3
Settlement		
Detached Housing (C19th)	1	0
Detached Housing (C20th)	3	1
High Status Residence	1	0
Isolated Farm Complex	18	29
Mixed 20th Century	3	1
Semi Detached Housing (Pre WWII)	1	3
Semi-detached Housing (WWII - C20th)	3	1
Village Farm Complex	3	2
Totals Settlement	33	37
Water and Wetlands		
Artificial Open Water	1	0
Totals Water and Wetlands	1	0
Woodland		
Plantation Woodland	19	10
Totals Woodland	19	10

B.14 Character Area 14 – Sunk Island and Cherry Cobb

Number of record	147
Total area	6,489ha
Percentage of Project Area	2.7%



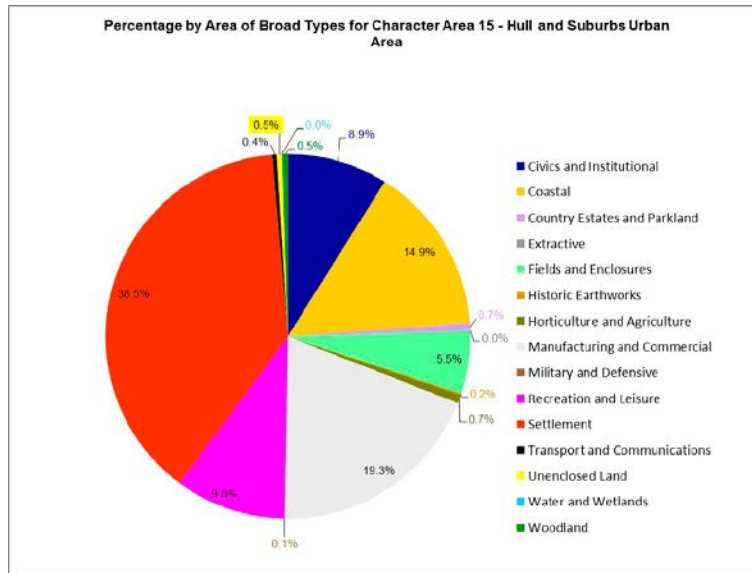
Sunk Island and Cherry Cobb – Area Analysis Report

	Count	Total Area (ha)
Civics and Institutional		
Places of Religious Worship	1	0
Totals Civics and Institutional	1	0
Coastal		
Mud Flats	9	2479
Salt Marsh	6	190
Totals Coastal	15	2669
Fields and Enclosures		
Modern Fields	46	2998
Parliamentary Planned Enclosure	5	322
Private Planned Enclosure	14	409
Totals Fields and Enclosures	65	3729
Manufacturing and Commercial		
Docks, Wharves and Havens	1	1
Totals Manufacturing and Commercial	1	1
Military and Defensive		
Military Base	1	4
Totals Military and Defensive	1	4

	Count	Total Area (ha)
Settlement		
Detached Housing (C18th)	1	1
Detached Housing (C19th)	2	0
Detached Housing (C20th)	1	2
Isolated Farm Complex	26	51
Semi Detached Housing (Pre WWII)	4	0
Semi-detached Housing (WWII - C20th)	16	0
Terraced Housing (C19th)	1	0
Totals Settlement	51	54
Unenclosed Land		
Rough grassland/scrub	5	26
Totals Unenclosed Land	5	26
Water and Wetlands		
Artificial Open Water	1	0
Totals Water and Wetlands	1	0
Woodland		
Plantation Woodland	7	6
Totals Woodland	7	6

B.15 Character Area 15 – Hull and Suburbs Urban Area

Number of records	6135
Total area	7.746ha
Percentage of Project Area	3.2%



Hull and Suburbs Urban Area – Area Analysis Report Count

	Count	Total Area (ha)
Civics and Institutional		
Emergency Services	20	11
Health Centre	32	1
Higher/Further Education Establishment	18	52
Hospital	15	60
Institutional Residence	83	40
Law Courts	2	1
Municipal and Private Cemeteries	26	76
Municipal Buildings	19	1
Places of Religious Worship	114	4
Prison	1	9
School	166	435
Totals Civics and Institutional	496	690
Coastal		
Beach	1	1
Coastal Management	3	1
Mud Flats	17	1150
Salt Marsh	2	5
Totals Coastal	23	1157

	Count	Total Area (ha)
Country Estates and Parkland		
Country House	6	2
Estate Buildings	5	1
Formal Gardens	3	2
Kitchen Gardens	1	0
Landscape Park	12	47
Totals Country Estates and Parkland	27	52
Fields and Enclosures		
Early Enclosure	29	97
Modern Fields	20	138
Parliamentary Planned Enclosure	30	149
Private Planned Enclosure	3	28
Re-organised Early Enclosure	1	17
Totals Fields and Enclosures	83	429
Historic Earthworks		
Medieval Manorial Site	1	3
Medieval Religious Complex	1	9
Totals Historic Earthworks	2	12
Horticulture and Agriculture		
Allotment Gardens	31	53
Nurseries	4	5
Orchards	1	0
Totals Horticulture and Agriculture	36	58
Manufacturing and Commercial		
Caravan Production and Storage	2	28
Chemical Works	4	141
Derelict Industrial Land	51	101
Docks, Wharves and Havens	32	84
Electricity Related Infrastructure	12	8
Factory	61	106
Fuel Distribution	10	26
General Commercial	441	204
General Industrial	46	42
Industrial Estate/Retail Park	94	453
Mill Complex	5	1
Shopping Centre	16	27
Supermarket	26	25
Timber Yard	9	61
Vehicle Storage	1	0

	Count	Total Area (ha)
Warehouses	22	162
Water Treatment	4	26
Totals Manufacturing and Commercial	836	1495
Military and Defensive		
Military Base	5	4
Totals Military and Defensive	5	4
Recreation and Leisure		
Cinema Complex	3	2
Golf Course	8	150
Hotel Complex	10	7
Leisure/Sports Centre	15	14
Marina	2	3
Other Recreational	129	95
Public Parks and Gardens	10	101
Recreation Ground	98	180
Recreational Seafront	1	1
Sports Field and Courts	54	191
Sports Stadium	3	18
Static Caravan/Chalet Park	1	0
Totals Recreation and Leisure	334	762
Settlement		
Bomb Damage Plot	9	0
Detached Housing (C18th)	14	2
Detached Housing (C19th)	127	6
Detached Housing (C20th)	428	63
Detached Housing (C21st)	14	2
Domestic Garden	1	0
Empty Housing Plot	63	107
Flats and Apartments	192	21
High Status Residence	8	3
Historic Settlement Core	39	42
Isolated Farm Complex	8	2
Mixed 20th Century	212	60
Planned Residential Development	1072	1993
Semi Detached Housing (Pre WWII)	432	195
Semi-detached Housing (C21st)	3	0
Semi-detached Housing (WWII - C20th)	181	87
Terraced Housing (C18th)	12	0
Terraced Housing (C19th)	518	89
Terraced Housing (C20th)	803	307
Terraced Housing (C21st)	7	0

	Count	Total Area (ha)
Traveller Site	4	1
Village Farm Complex	6	2
Totals Settlement	4153	2982
Transport and Communications		
Bus Depot	1	0
Bus Station	2	1
Canal lock/basin	3	0
Car Park	39	9
Railway Station	7	7
Road Junction	4	10
Service Station	19	1
Sidings	3	2
Totals Transport and Communications	78	30
Unenclosed Land		
Rough grassland/scrub	16	35
Totals Unenclosed Land	16	35
Water and Wetlands		
Artificial Open Water	3	1
Ornamental Open Water	2	0
Totals Water and Wetlands	5	1
Woodland		
Estate Woodland	8	4
Other Woodland	27	25
Plantation Woodland	6	10
Totals Woodland	41	39



Historic England Research and the Historic Environment

We are the public body that looks after England's historic environment. We champion historic places, helping people understand, value and care for them.

A good understanding of the historic environment is fundamental to ensuring people appreciate and enjoy their heritage and provides the essential first step towards its effective protection.

Historic England works to improve care, understanding and public enjoyment of the historic environment. We undertake and sponsor authoritative research. We develop new approaches to interpreting and protecting heritage and provide high quality expert advice and training.

We make the results of our work available through the Historic England Research Report Series, and through journal publications and monographs. Our online magazine Historic England Research which appears twice a year, aims to keep our partners within and outside Historic England up-to-date with our projects and activities.

A full list of Research Reports, with abstracts and information on how to obtain copies, may be found on www.HistoricEngland.org.uk/researchreports

Some of these reports are interim reports, making the results of specialist investigations available in advance of full publication. They are not usually subject to external refereeing, and their conclusions may sometimes have to be modified in the light of information not available at the time of the investigation.

Where no final project report is available, you should consult the author before citing these reports in any publication. Opinions expressed in these reports are those of the author(s) and are not necessarily those of Historic England.

The Research Report Series incorporates reports by the expert teams within the Investigation & Analysis Division of the Heritage Protection Department of Historic England, alongside contributions from other parts of the organisation. It replaces the former Centre for Archaeology Reports Series, the Archaeological Investigation Report Series, the Architectural Investigation Report Series, and the Research Department Report Series