



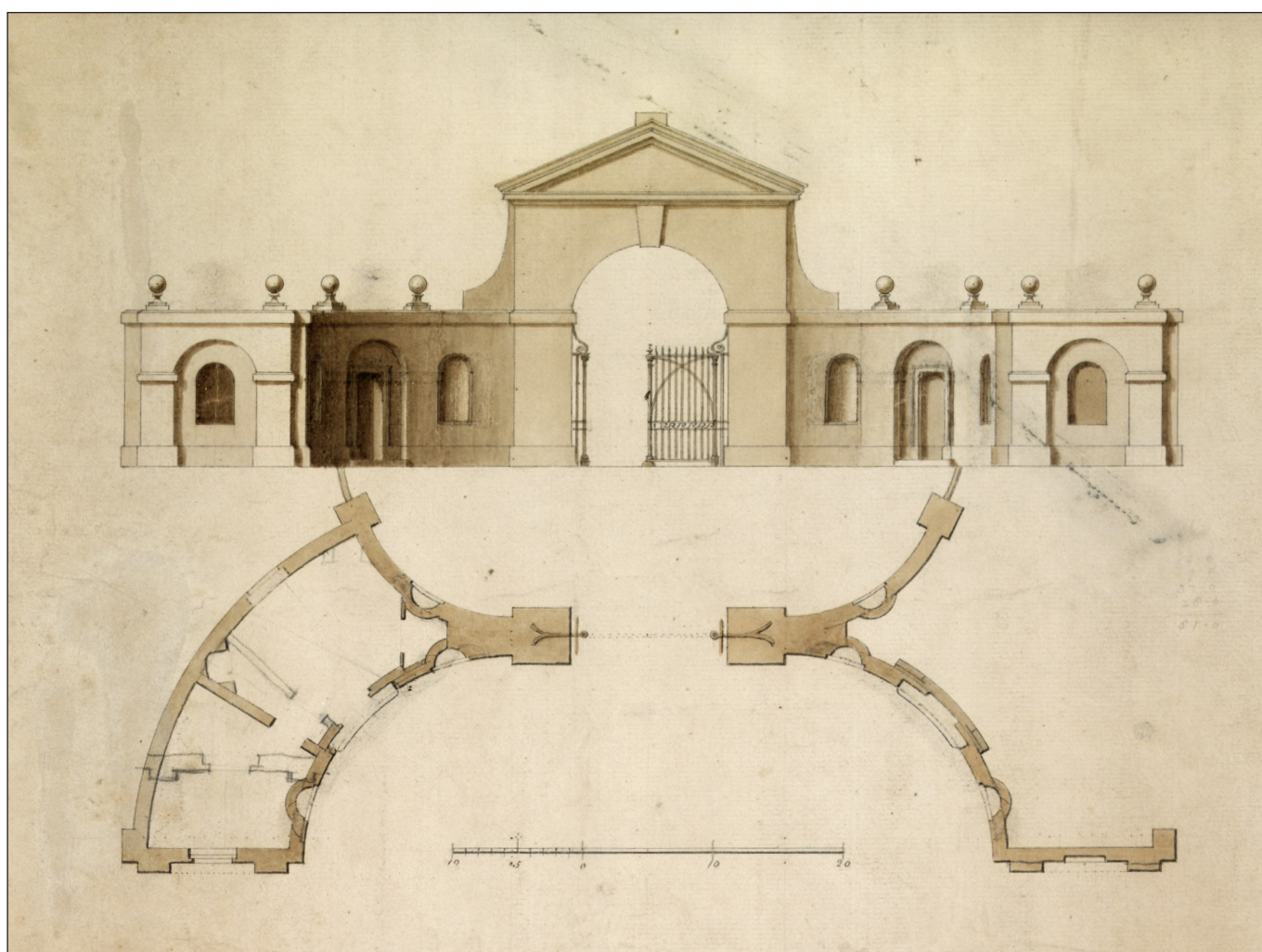
Historic England

Building and Landscape Conservation

Capability Brown's Drawings: A Reference Catalogue of Drawings by Brown or his Office (c.1740s–83)

Dr Sarah Rutherford and Ceryl Evans, consultants
with Steffie Shields MBE

Discovery, Innovation and Science in the Historic Environment



**Capability Brown's Drawings:
A Reference Catalogue of Drawings by Brown or his Office
(c.1740s–83)
Including Architectural Drawings and Landscape Scenes**

Dr Sarah Rutherford & Ceryl Evans,
with Steffie Shields MBE, consultants

© Historic England

ISSN 2059-4453 (Online)

The Research Report Series incorporates reports by Historic England's expert teams and commissioned reports. The series replaces the former Centre of Archaeology Report Series, the Archaeological Investigation Report Series, the Architectural Investigation Report Series, the Research Department Report Series.

Many of the Research Reports are of an interim nature and serve to make available the results of specialist investigations in advance of full publication. They are not usually subject to external refereeing, and their conclusions may sometimes have to be modified in the light of information not available at the time of the investigation. Where no final project report is available, readers must consult the author before citing these reports in any publication.

Opinions expressed in Research Reports are those of the author(s) and not necessarily those of Historic England.

For more information contact Res.reports@HistoricEngland.org.uk or write to Historic England, Conservation Department, The Engine House, Fire Fly Avenue, Swindon, SN2 2EH

Front cover: Ashburnham Place, Sussex, gateway with lodges, plan and elevation, 1767 (East Sussex Record Office Ref ASH 4360). Used by kind permission of The Ashburnham Heritage Trust and East Sussex Record Office. Copyright reserved.



The Capability Brown Festival

The Capability Brown Festival was hosted by the Landscape Institute on behalf of a partnership comprising Historic Houses (formerly the Historic Houses Association), the National Trust, English Heritage, Historic England, Natural England, The Gardens Trust (with the County Gardens Trusts), Parks & Gardens UK, Kolab,

the Embroiderers' Guild, The Arts Society (formerly NADFAS), the National Garden Scheme, the Royal Horticultural Society, VisitBritain, VisitEngland, Historic Royal Palaces, Bridgeman Images, Blenheim Palace and the Georgian Group. The Capability Brown Festival was funded by the National Lottery Heritage Fund (formerly Heritage Lottery Fund). Nearly 500 events took place across England and Wales, including 38 strategic commissions, fulfilling the Capability Brown Festival's two key aims of developing new audiences and interpreting Brown for the needs of the widest possible range of participants. The Festival produced 24 downloadable leaflet maps for Brown sites and 160 Brown sites on the interactive map now have researched and illustrated entries covering both historic and biodiversity information. The Festival attracted at least 1,571 pieces of media coverage and thanks to the internet, is estimated to have reached a potential audience of 4.2 US billion.

Website: www.capabilitybrown.org

Twitter: @BrownCapability

Instagram: @capabilitybrownfestival

SUMMARY

Lancelot ‘Capability’ Brown was both the most outstanding landscape designer of his day and a respected architect of country house estates, with commissions throughout England, many of which combined both skills. During his career he fundamentally altered the relationship of the house with the designed landscape. As the architectural historian Howard Colvin expressed it, ‘In Brown’s hands the house, which before had dominated the estate, became an integral part of a carefully composed landscape intended to be seen through the eye of the painter and its design could not be divorced from that of the garden. So architecture as well as horticulture necessarily formed a part of Brown’s equipment.’

This Historic England research report presents an evolving reference catalogue of well over 100 existing architectural drawings and other drawn material from the office of the landscape designer Lancelot ‘Capability’ Brown (1716-83). It forms part of the Capability Brown Festival legacy. As well as setting out the place name, type of building and drawing, and location of the original, where known, it provides information on published reproductions that are relatively easily available, including in monographs and scholarly journals such as *Garden History*.

This research report forms a companion volume with the research report [Capability Brown’s Plans: A Reference Catalogue of Design Plans and Surveys drawn by Brown or his Office \(c.1750-83\)](#) (Historic England Research Report 5-2018).

AUTHORS

This report was researched and compiled by consultants Dr Sarah Rutherford and Ceryl Evans, with additional contributions by Steffie Shields MBE.

Sarah is an historic environment consultant and has published widely on the subject of historic landscapes, including *Capability Brown* (2016) for the National Trust, co-authoring *Vulnerability Brown: Capability Brown Landscapes at Risk* (2017) for the Gardens Trust.

Ceryl was Director of the Capability Brown Festival. As a social history curator and audience development specialist, Ceryl developed and managed the Capability Brown Festival to ensure that it reached beyond traditional audiences for landscape history.

In 2018 Sarah and Ceryl co-authored the companion volume to this, *Capability Brown’s Plans: A Reference Catalogue of Design Plans and Surveys drawn by Brown or his Office (c.1750-83)* Historic England Research Report Series 5-2018.

Steffie Shields MBE is an historic landscape consultant and author, with particular expertise in the landscapes of Brown; she was an advisor to the Capability Brown Festival, and published *Moving Heaven and Earth: Capability Brown’s Gift of Landscape* in 2016.

ACKNOWLEDGEMENTS

The following have kindly contributed advice and information:

David Adshead (Secretary, The Georgian Group), Katherine Alker (National Trust Croome), Kitty Anderson (Kirkharle Courtyard), The Ashburnham Heritage Trust, David Bailey (National Trust Berrington), Philip Compton (Castle Ashby Archives), Dr Oliver Cox (Heritage Engagement Fellow, University of Oxford), Jon Culverhouse (Archivist, Burghley House), Susan Darling, Mrs Gilly Drummond (Chair of the Capability Brown Festival, and Cadland), Carol Fitzgerald (Northamptonshire Gardens Trust), Dr Alexa Frost (Archivist, Blenheim Palace), Keith Garner, James Guernsey (Packington Hall), Elaine Johnson (Northamptonshire Gardens Trust), Jonathan Lovie, Dr Stephen Lloyd (Curator of the Derby Collection, Knowsley Hall) Karen Lynch (Yorkshire Gardens Trust), James Methuen (Corsham Court), Joanne Mirzoeff, Edward Perry (Knowsley Hall), Crispin Powell (Archivist, Buccleuch Living Heritage Trust, Boughton House), Advolly Richmond (Welsh Historic Gardens Trust and Shropshire Gardens Trust), Emma Robinson (Director of Policy & Campaigns, Historic Houses), Cathryn Spence (Curator/Archivist, Bowood House & Gardens), Elizabeth Scudder (Principal Archivist (Access), London Metropolitan Archives), Mick Thompson (Archivist, Hult International Business School, Ashridge), Michael Walker (Head of Garden and Estate, The Trentham Estate), Gary Webb (Head of Landscape & Gardens, Compton Verney), Christopher Whittick (County Archivist, East Sussex Record Office), Gareth J. L. Williams (Curator & Head of Learning, Weston Park Foundation), Maria Wingfield Digby (Sherborne Castle), Philippa Wood (Curator, Burton Constable Foundation), Wiltshire Archive Service, and National Trust Images.

We are grateful to East Sussex Record Office, The National Trust, Burton Constable Foundation and the Royal Institute of British Architects for allowing us to reproduce their Brown drawings in the catalogue.

PROJECT MANAGEMENT AND REPORT PRODUCTION

The project was managed by Jenifer White, Historic England and the report produced by Tracy Manning.

ARCHIVE LOCATION

Historic England Archive, Swindon

DATE OF REPORT

August 2019

CONTACT DETAILS

email: Conservation@HistoricEngland.org.uk

CONTENTS

1 PURPOSE OF THE CATALOGUE	1
1.1 Historic England’s Contribution to the Capability Brown Festival Legacy	2
1.2 More Drawings to Discover?	3
1.3 The Role of Historic Documents in Designation	3
1.4 Proof of Buildings Executed.....	3
2 SCOPE OF THE CATALOGUE.....	4
3 USING THE CATALOGUE.....	5
4 CONCLUSIONS: BROWN, THE ARCHITECT.....	6
4.1 Landscape and Architecture	6
4.2 Brown’s Reputation as an Architect.....	6
4.3 Places Covered, Types of Structures and Execution of Designs	8
4.4 Location of Drawings	9
4.5 Types of Drawings, Attribution, Architectural Style.....	9
4.6 Technique.....	10
4.7 The Architectural Context.....	11
5 RECOMMENDATIONS FOR FURTHER WORK AND INITIATIVES	12
5.1 Curation and Cataloguing	12
5.2 Further Research and Analysis Projects	12
5.3 Other Initiatives	13
6 REFERENCES.....	14
7 SELECTED ARCHITECTURAL DRAWINGS FROM BROWN’S OFFICE	17
8 THE CATALOGUE	27
9 SITES WITH DRAWINGS, IN DATE ORDER	118
10 LISTED BUILDINGS IN THE CATALOGUE	121

1 PURPOSE OF THE CATALOGUE

The 2016 Capability Brown Festival prompted new research and in turn highlighted plans and documentation for the landscape designs of Lancelot ‘Capability’ Brown (1716-83). The Festival generated the first major re-evaluation of Brown’s work and related resources since Dorothy Stroud’s seminal work was first published nearly 70 years ago. As a result more plans and drawings have been re-discovered and more materials have been digitised and made available online, but a reference list of plans and architectural drawings and related material – like the catalogues for works of art by other 18th-century giants such as Constable and Turner – has been missing. To begin to address this, a reference catalogue of Brown’s plans was developed and published in 2018.

As a companion volume to the 2018 catalogue of plans, this report provides a reference catalogue of surviving architectural drawings, sketches and vignettes from the office of Lancelot Brown. Like the catalogue of plans, it is work in progress, a catalogue that can be amended in the light of significant new information received.

As well as itemizing the various drawings and sketches, using modern site names, the catalogue provides an indication of their location and ownership, the purpose of the drawing where reproductions are to be found in relatively widely available secondary sources, and links to the National Heritage List for England (historicengland.org.uk/listing/the-list/) for listed buildings and registered parks and gardens. This document covers only material from Brown’s office.

1.1 Historic England's Contribution to the Capability Brown Festival Legacy

Historic England was a partner in the 2016 Capability Brown Festival and advised on the research agenda including commissioning and publishing a research report from the University of East Anglia in 2013. An interactive map presenting the aerial photograph collection for Brown landscapes was also published online as a research tool (historicengland.org.uk/research/current/conservation-research/designed-landscapes/capability-brown-landscapes/). Historic England drew on the new research finds to update and review Register entries for Brown landscapes.

In 2017 Historic England published John Phibbs' *Place-Making: The Art of Capability Brown* which includes many Brown plans and drawings.

In 2018 the companion volume to this research report *Capability Brown's Plans: A Reference Catalogue of Design Plans and Surveys drawn by Brown or his Office (c.1750-83)* (Historic England Research Report 5-2018) was published. In this desk-top survey the authors identified 82 surviving documents that are either firmly attributed to Brown's office, or where a strong link is identified such as an existing plan annotated by Brown or one of his staff. The project highlighted the need for a further catalogue for Brown's architectural plans and related designs for buildings.

This further research project, addressing architectural drawings from Brown's office (including architectural and less formal sketches), follows a similar format to the catalogue of design plans and surveys.

This catalogue responds to recommendations in Historic England's published research report *Lancelot 'Capability' Brown: A Research Report Impact Review by the Landscape Group, University of East Anglia (UEA)*. In particular the catalogue is a stepping-stone towards the recommendation to collate high-resolution digital images of all the Brown plans and drawings for research and study, and to ensure this important primary documentary record is safeguarded.

'All the information relating to the better-documented examples of these sites – especially all the known Brown plans, maps and near-contemporary illustrations – needs to be collated and examined together, in a systematic manner, in order to ascertain the precise characteristics of Brown's style and the extent to which this changed over time.'

Landscape Group, University of East Anglia, *Lancelot 'Capability' Brown: A Research Report Impact Review*, English Heritage Research Report 50-2013, 2013, p.57.

1.2 More Drawings to Discover?

It is certain that more drawings and plans exist, beyond those in this catalogue. It is intended that publication of this reference catalogue will spur on further research leading to discoveries of further architectural material by Brown or from his office. Other similar material which survives may include material by members of Brown's staff perhaps not recognised as part of the Brown landscaping. The catalogue could be systematically expanded to include these if resources allowed. The catalogue shows the range of architectural work, and, where drawings survive, links listed and unlisted buildings with Brown's designed landscapes, and in doing so opens up a discussion about the value of reappraising Brown's building architectural work. A table of Listed buildings with drawings noted in the catalogue is provided in Section 9, covering 13 sites and 17 buildings. The catalogue also offers a model for the sector for other similar material such as that of Brown's successor in landscape design, Humphry Repton, and the research that has been carried out as part of his 2018 bicentenary.

1.3 The Role of Historic Documents in Designation

As with all historic assets, those which are particularly well recorded through historical documentation may be of interest for these reasons alone, and the survival of good historical records can enhance the interest and therefore the significance of a site. Particularly where the condition of the asset is poor, documents and other sources may show it to be of considerably more interest with more surviving historic features, than an initial site investigation may indicate. New archival information concerning the historic development of a park or garden might also result in that site being re-evaluated and new attributions of buildings to Brown or his office. As stated in Historic England's Register of Parks and Gardens Selection Guide: Rural Landscapes, "Whatever its date and type, where a landscape's creation or development is particularly well documented it will almost always add to its interest, and can merit designation at a higher grade." This may also apply to Listing of buildings and structures.¹

1.4 Proof of Buildings Executed

It should be noted that the existence of drawings is not proof that the structures concerned were undertaken or that the suggested buildings were executed during the implementation process. In some cases it is clear that a design has been executed, but in others, without detailed research and site inspection, it is unclear whether the design was executed at all, or perhaps in part, or even the design re-used and executed on another site.

¹ Comparative studies such as Michael Devenish's report on the Little Temple at Temple Newsam in Yorkshire help to attribute a likely designer, resulting in this case to the re-appraisal of the significance of the building and its listing grade (historicengland.org.uk/listing/the-list/list-entry/1255949). Michael Devenish 2014 'An Extraordinary Order. The Little Temple at Temple Newsam', unpublished report.

2 SCOPE OF THE CATALOGUE

The catalogue includes well over 100 surviving design proposals and related material such as perspective sketches and title scenes on maps, illustrating scenes and buildings that are firmly attributed to Brown's office, or those where a strong link is identified. The list is not complete and can be updated as required. The format is flexible and in future editions other information could be added such as primary references in other documents, cost, etc. The catalogue does not include plans or land surveys except where they also contain drawings of some type (see the companion volume, [Capability Brown's Plans: A Reference Catalogue of Design Plans and Surveys drawn by Brown or his Office \(c.1750-83\)](#), Historic England Research Report 5-2018).

The report is aimed at a wide range of researchers including:

- Historic England and the other Capability Brown Festival Partners
- 18th-century art history, cultural and landscape studies
- Specialist amenity and voluntary groups focussed on historic landscapes including The Gardens Trust and county gardens trusts
- Architectural researchers, conservationists and historians including those in private practice, at universities, historic estates and landowning bodies like trusts, government agencies and non-governmental organisations
- Amenity and voluntary groups focussed on this period including the Georgian Group, the Ancient Monuments Society and The Arts Society
- Repositories and collections including public archives and private collections

3 USING THE CATALOGUE

The layout largely follows that established in *Capability Brown's Plans: A Reference Catalogue of Design Plans and Surveys drawn by Brown or his office (c.1750–83)* for consistency of presentation, with some adaptations to take into account the different types of material and subjects.

The catalogue draws on Capability Brown Festival resources owned by the Festival partnership, and desktop research for reference materials. Reference material of particular help with current attributions of sites is John Phibbs' 'List of Lancelot Brown Site Attributions' (December 2016, 5th edition).

Information for each site includes:

- Current site name
- Address
- National Heritage List for England (NHLE) Registered Park & Garden entry number and Listed Building number where relevant, or the listing equivalent in Wales or Ireland.
- Subject and type of Drawing: whether design, perspective sketch, vignette or other
- Existence of drawing: Level of certainty that a drawing exists: yes, or unclear
- Date: or approximate date, of creation of drawing
- Provenance: Level of certainty of provenance being from Brown's office
- Current owner of drawing
- Original client
- Location of original: repository, catalogue reference with web link if available
- Reproductions: whether published in commonly available sources, if any, including books, journals and web links. The sources are given in full in Section 6: References.
- Notes: additional information where available, such original name of site, drawing title, attribution queries, extent of execution if known, etc

Gaps may not mean the information is not extant, merely that it was not available within the scope of this project.

4 CONCLUSIONS: BROWN, THE ARCHITECT

4.1 Landscape and Architecture

Brown was both the most outstanding landscape designer of his day and a respected architect of country house estates, with commissions throughout England, many of which combined both skills. During his career he fundamentally altered the relationship of the house with the designed landscape. As the architectural historian Howard Colvin expressed it, 'In Brown's hands the house, which before had dominated the estate, became an integral part of a carefully composed landscape intended to be seen through the eye of the painter and its design could not be divorced from that of the garden. So architecture as well as horticulture necessarily formed a part of Brown's equipment.'²

4.2 Brown's Reputation as an Architect

Over nearly four decades, from c.1745 to his death in 1783, Brown was the architect of choice for a wide range of country estate owners including some of the most important, wealthy and influential politicians, aristocracy and royalty. In his time he enjoyed a considerable reputation as an architect and was regarded as favourably as his contemporaries of the highest calibre such as William Chambers, James Paine and Robert Adam, alongside whom he often worked, and competed against, for contracts. After Brown's death his architectural reputation swiftly became obscure, but his designs were, even so, of a high quality. Perhaps his obscurity descended because unlike these contemporaries he published no treatise on his buildings or theories.

Brown began his architectural career while acting as Clerk of Works for the many alterations at Stowe in the 1740s for Lord Cobham, and studying architecture, his sources including the *Builder's Dictionary or Gentleman's and Architect's Companion* of 1734. By 1747 he had become competent in drawing out building plans and was influenced by William Kent's style of delineation and theories. Brown's earliest surviving drawing may be a sketch on which the endorsement 'Upright of Gibbs' Building' is written in his hand, depicting the building by Gibbs which stood in the Western Gardens, until it was moved to Brown's Grecian Valley in 1764, 15 years after he left.³

² Colvin, H 2008 *A Biographical Dictionary of British Architects 1600-1840*, 4th edition, p.167.

³ Attributed by Stroud, 51-52. Pencil sketch, ink on paper, with notes in French. Elevation 'The upright of Gibbs Building' (with French comments). Held at Huntington Library: ST Maps & Plans Box 9

At Stowe, Brown also designed the Cobham Monument, 1747-48, a pillar at heroic scale, but no drawing for this has been found. Later in his career (1771), Brown took Henry Holland Junior (1745-1806) into his office, and then into his family when Brown's eldest daughter Bridget married Holland in St George's Hanover Square London, on 10th February 1773.⁴ Brown and Holland worked regularly together after that, including at Berrington, considered to be Brown's last contract. Brown died at the Hollands' house in Hertford Street, Mayfair, on 6th February 1783.

Brown's declining reputation as an architect was remarked upon by Humphry Repton in 1803, when he noted only 20 years after Brown's death that, 'Mr Brown's fame as an architect seems to have been eclipsed by his celebrity as a landscape gardener', as he was 'the only professor of the one art, while he had many jealous competitors in the other'.⁵ Brown's buildings were successful, above all Repton believed, because they were imbued with 'the higher requisites of the art relating to form, to proportion, to character, and above all to arrangement'. Repton quoted encomiums of Brown's architectural prowess from his son-in-law Henry Holland, and from his most influential patron and client, the 6th Earl of Coventry at Croome.

Repton also set down the earliest published list of Brown's architectural works, listing 20 country house estates for which he produced a variety of buildings including mansions, offices, farms and landscape buildings, based on the plans that had been left to Holland. These included several for which drawings survive as noted in the list below, at Burghley, Broadlands, Corsham, Trentham and Claremont. This was the earliest list of Brown's architectural works.

The catalogue identifies well over 100 different designs for structures with drawings definitely or probably attributed to Brown or his office. Of these, one is a sketch by Brown of an existing building ('The Gibbs Building' at Stowe, now called the Fane of Pastoral Poetry, see discussion above) and seven are not linked to a known commission (these are by Spyers and are now in the Hermitage collection in Russia). By setting out the extent and types of design commissions Brown undertook, the catalogue helps to rehabilitate Brown's position as a more than competent and prolific 18th-century architect.

⁴ Marriage Settlement for Lancelot Brown's eldest daughter Bridget and Henry Holland Junior, dated 10th February 1773, held at London Metropolitan Archives Ref: Q/EV/051. "(1) Hy. Holland, Half Moon St., builder, & Mary, his wife (2) Hy. Holland, jnr., Hertford St., builder (3) Lancelot Brown, Hampton Court (4) Bridget Brown, do., sp. (5) Lancelot Brown, jnr., Lincoln's Inn; John Edison, Coopers Hall; Robt. Burton, Inner Temple; Leonard Tressillion, St. Paul, Covent Gdn., silk mercer. Ground in Carrington Mews, St. Geo., Han. Sq.; Grt. Carrington St."

⁵ Repton, H 1803 *Observations on the Theory and Practice of Landscape Gardening* London: Bensley/Taylor, pp.167-69

4.3 Places Covered, Types of Structures and Execution of Designs

The catalogue identifies 33 named sites for which building designs survive, but in this respect is incomplete. Howard Colvin identified 37 sites with buildings by Brown, but only 15 of those sites appear to have extant drawings and are therefore featured in this catalogue. A further 15 sites (which Colvin had not connected with Brown's architecture) are also included.⁶

The subjects of the known surviving architectural drawings relate to country estates, the genre for which Brown is best known, although as identified by Stroud and Colvin, he worked on occasional London town houses too.⁷ The drawings for estate buildings cover much of England, from the southern counties, Dorset (Milton Abbey), London (Syon) and Sussex (Ashburnham), as far north as East Yorkshire (Burton Constable) and Northumberland (Rothley and Wallington). A considerable group in the Midlands includes outstanding collections for Blenheim, Belvoir, Brocklesby, Burghley. One site is in Wales (Dinefwr/Newtown House) and another in the Republic of Ireland (Slane Castle).

The types of structures in the surviving drawings are typical of great country estates of the time. They range from country mansions such as Claremont, Broadlands, Burghley and Belvoir, through stables, offices and farmsteads, and other estate and park buildings such as gateways and lodges, bridges, ruins, pavilions, seats and temples, to more practical ice houses, dams and stockades. The most extensive collections containing six or more architectural drawings include Ashburnham (6), Belvoir (at least 6), Blenheim (9), Burghley (7) Burton Constable (6), Claremont (numerous in an album), and the Hermitage collection (7).

Not all the designs were executed. In some cases it is clear today that a design has been executed and the building survives, but in others without detailed research and site inspection it is unclear whether the design was executed at all, or perhaps in part, or even the design re-used and executed on another site (such as with the Hensington Gateway at Blenheim, the design of which reappears for Monument Gateway at Trentham). The origin and purpose of the designs by Spyers now in the Hermitage is unclear, including whether they were commissioned for specific sites and clients, or were speculative, and whether they were executed. A detailed comparison of their similarities with other drawings and buildings from Brown's office would be illuminating.

⁶ Colvin, H *A Biographical Dictionary of British Architects 1600-1840*, 4th edition, 2008, pp.166-68. Colvin notes that his list is based on information in Stroud's book.

⁷ 75 South Audley St and 34 Berkeley Square, but no drawings have so far been identified for these projects.

4.4 Location of Drawings

The drawings are widely scattered, and are mostly housed in England. The majority of the more extensive collections of drawings are still owned by and stored at the country estates for which they were commissioned, including Blenheim, Burghley, Belvoir, Burton Constable. Those for Rothley Lower Lake are owned by the National Trust and remain in the house at Wallington where they have always been. A few extensive collections are in public repositories such as that for Ashburnham Place (East Sussex Record Office) and Claremont (RIBA). Many single or small numbers of drawings are in county archives. A few drawings are abroad: Slane, in the National Irish Architectural Archive, and the Spyers drawings among the extensive Hermitage collection of his watercolours in Russia, bought by Catherine the Great in 1783.

The largest collections often survive with plans and/or surveys for the related parks, such as Ashburnham, Blenheim, Burghley, Belvoir, Burton Constable, Rothley.

4.5 Types of Drawings, Attribution, Architectural Style

Several types of drawing exist: preliminary sketches, plans, elevations, sections, perspectives and presentation drawings. Titles to Brown's landscape survey and design plans are sometimes written as fictive inscriptions on rough blocks or stone as part of a landscape capriccio.

Most of the drawings in the catalogue are either signed or initialled by Brown or are firmly attributed to Brown or his office. Some have not hitherto been widely known of, such as the garden seat for Adderbury initialled LB, which has been identified by Crispin Powell, Archivist to the Buccleugh Living Heritage Trust.⁸ At Trentham the Monument Lodges were formerly considered to be by Joseph Pickford, but Howard Colvin and local historian Sue Gregory give the design to Brown.⁹ Yet other drawings have not until now been considered as possibly of this provenance, but the graphic style when compared with other contemporary items suggests that they may be so. In particular several items for Wallington have draughtsmanship similarities with those elsewhere firmly attributed to Brown. However, this remains to be confirmed by further analysis.

Brown designed in various styles including classical, Gothic, and rustic, all of which were typically used at the time, although classical predominated with Brown and his contemporaries. The reason for the choice of style is seldom explicit but seems to have been influenced in some cases by the style of existing buildings, such as the use of Gothic at Burghley. It is unclear to what extent Brown was influenced by designs by other architects in his own work or by the stylistic demands of individual clients.

⁸ Pers. comm. Crispin Powell, Archivist to the Buccleugh Living Heritage Trust, 11 February 2019.

⁹ Colvin, H A *Biographical Dictionary of British Architects 1600-1840*, 4th edition, 2008, p.168. Sue Gregory, 'The Historic Gardens at Trentham Hall', *Staffordshire Archaeological and Historical Society Transactions* Vol. 44 (2010), pp.71-95; footnote 56, p.81.

Striking similarities exist between buildings from Brown's office designed for different sites, such as the Hensington Gateway drawing for Blenheim (unexecuted) and the Monument Gateway at Trentham (executed) which also has a design drawing. Also various bridges and greenhouses show similarities. The greenhouse designed for Ashburnham is very similar to those at Compton Verney and formerly at Stoke Place, Bucks (for neither of which plans survive).

It is unclear whether, and if so how, Brown's architectural style developed during his career, but closer examination of the drawings will help to clarify this. Brown's seal (which is preserved on several letters sent to Paul Methuen at Corsham Court in the early 1760s from Brown's home in Hammersmith and on his travels) appears to show a profile of Inigo Jones, based on the famous portrait by van Dyck. This is significant as he took the most revered of English architects as his personal symbol, and indicates that architecture was of the highest importance to him professionally.

Reproductions of Brown's architectural drawings are scattered amongst various publications. Like those of his plans, one of the most extensive collections remains the 1975 edition of Stroud's *Capability Brown*.

4.6 Technique

The designs are generally on single sheets of paper, occasionally with two designs on one sheet. At Packington an apparently unique method of presentation for Brown is found early in his architectural career in 1751. Here he prepared a design plan for the parkland with four architectural elevations and sketches for proposed estate buildings, as vignettes around the edge of the plan.

The drawings, while from Brown's office, are in several different hands but the authors of most remain to be identified. Those executed by Spyers and now in the Hermitage in Russia provide a useful reference for comparison with the other drawings. It is unclear whether the presentation drawings by John Ashby for Claremont represent the unique use of a draughtsman for the design details of a commission, or whether Brown regularly used Ashby or another draughtsman for this purpose.

The fictive scenes on survey and design plans which display the titles are usually found singly or sometimes occur in pairs (such as Woodchester). Nine of these scenes are identified on eight plans in the catalogue but there are more to be noted. They do not, it seems, illustrate the landscape scenery designed on that plan, or intended buildings, but are notional Arcadian scenes, often with the title depicted on a part-worked block of stone or a scroll. The artists are unclear as are the reasons for the scenes chosen. The catalogue is likely to be incomplete and there are very probably more of these fictive scenes to be identified.

4.7 The Architectural Context

Brown had links with other designers and worked on commissions as an independent architect on sites alongside other important and prolific architects including Chambers, Paine and Adam. There is no comparative study that systematically identifies their architectural commissions on particular sites and draws conclusions about their stylistic similarities and differences, their working relationships or makes comparisons of their relative merits and influence.

Brown's twelve year working relationship with the architect Henry Holland Junior from 1771 is understood to some degree (and various collaborations are detailed by Stroud in her respective books on Brown and Holland). Having worked closely with Holland's builder father, also Henry, since the 1750s Brown took the younger Holland into his office as an architect. Their first major collaboration was for Lord Clive's Claremont, for which an extensive album of presentation and design drawings survives at the RIBA. For this reason Claremont was a landmark in Brown's career as well as introducing an innovation in country house planning. Holland later set up his own office and took on commissions unconnected with Brown's work. Stroud discusses their collaboration in her books on Brown and Holland, but further examination of the surviving designs and working arrangement may make this situation clearer for drawings produced later in Brown's career. An extensive collection of Holland's drawings survives in Sir John Soane's Museum. Other assistants to Brown and Holland were employed. Soane was taken on in 1772 and claimed to have designed the entrance hall at Claremont (alternative designs are in the album), and after Soane left in 1778 another young assistant was taken on, John Jagger.¹⁰

¹⁰ Stroud, D 1966 *Henry Holland His Life and Architecture*. London: Country Life, 19-20, 29-42.

5 RECOMMENDATIONS FOR FURTHER WORK AND INITIATIVES

5.1 Curation and Cataloguing

- Review and revise this list periodically to complete it as far as possible by adding further information, particularly about the existence of this type of material from Brown's office, either relating to additional material or the information presented above.
- Build on Phibbs' *List of Lancelot Brown Site Attributions* (5th edition) which identifies some signed drawings, and draw up a list of all sites for which Brown is known to have prepared drawings so that the survivors can be placed into context.
- Use this catalogue to promote and inform the production of a high resolution digital archive of drawings.
- Map all sites for which Brown prepared architectural design drawings and sketches and identify those for which they are extant.

5.2 Further Research and Analysis Projects

- Research Brown's architectural training, his influences in Britain and abroad, the extent and quality of his draughtsmanship and contribution to the design process.
- Comparative architectural study: compare all the drawings to identify the development of Brown's artistic and architectural styles.
- Compare forensically all drawings signed and initialled L.B. to confirm whether drawn by Brown personally or identify his other draughtsmen and the various artistic hands, leading to a published guide, including Spyers, Lapidge, Holland, Ashby and others.
- Identify the extent of implementation of the design drawings on site.
- Identify all existing buildings from Brown's office, based on Brown's designs or incorporating his design advice, initially using the National Heritage List for England and equivalent for Cadw in Wales and the Irish National Inventory of Architectural Heritage in Ireland. (Brown is not known to have worked in Scotland).

- Identify as many buildings and building designs from Brown's office as possible, including those executed, unexecuted and surviving.
- Carry out a similar research exercise to produce a reference catalogue to identify surviving contracts and correspondence to and from Brown's office and home to amplify information on the various commissions and Brown's work for each, to enable further opportunities to explore the social and economic history of Brown's milieu.

5.3 Other Initiatives

- Use the catalogue to add more information to the National Heritage List for England via the Enrich the List facility historicengland.org.uk/listing/enrich-the-list/.
- When resources allow, review the National Heritage List for England (NHLE) to ensure that Brown's surviving work is appropriately reflected, including the extent of his significant work within each site. If drawings are rediscovered, review the designation entry and status of the building(s) and landscape and add references to the NHLE.
- The catalogue offers a model for other landscape-related collections such as the research undertaken for the Humphry Repton bicentenary in 2018.
- A scholarly book re-appraising Brown's architecture.

6 REFERENCES

6.1 Bibliography

General Sources

The following are key general sources for the subject.

Colvin, H 2008 *A Biographical Dictionary of British Architects 1600-1840*, 4th edition, Yale: Yale University Press, pp.166-68 [Lancelot Brown]; pp.527-30 [Henry Holland]

Phibbs, J Dec. 2016 (5th edition) *List of Lancelot Brown Site Attributions* online at johnphibbs.uk/wp-content/uploads/2016/12/160901AttributionsA-Z5th-ed..pdf

Rutherford, S, Evans, C 2018 *Capability Brown's Plans: A Reference Catalogue of Design Plans and Surveys drawn by Brown or his office (c.1750-83)* Historic England Research Report Series 5-2018. Online at research.historicengland.org.uk/Report.aspx?i=16002&ru=%2fResults.aspx%3fp%3d1%26n%3d10%26t%3dcapability%2520brown%26ns%3d1

Stroud, D 1975 (3rd edition) *Capability Brown*. London: Faber & Faber

Stroud, D 1966 *Henry Holland His Life and Architecture*. London: Country Life

6.2 Reproductions

The following sources are referred to in the list where they provide reproductions of the document or information about the documents. The references are shortened as follows:

Bapasola

Bapasola, J 2009 *The Finest View in England The Landscape and Gardens at Blenheim Palace*. Woodstock: Blenheim Palace

Brown and Williamson

Brown, D, and Williamson, T 2016 *Lancelot Brown and the Capability Men*. London: Reaktion Books

Brown

Brown, J 2012 *Lancelot 'Capability' Brown: The Omnipotent Magician 1716-1783*. London: Pimlico

Duchess of Rutland

The Duchess of Rutland 2016 *Capability Brown & Belvoir: Discovering a Lost Landscape*. Nick McCann Associates

Garden History

The journal of the former Garden History Society and now the Gardens Trust;
various editions, see individual entries in the list.

Jackson-Stops

Jackson-Stops, G 1992 *An English Arcadia 1600-1990* London: The National Trust

Ladd

Ladd, FJ 1978 *Architects at Corsham Court*. Bradford-On-Avon: Moonraker Press

Lynch

Lynch, K 2016 *Noble Prospects: Capability Brown and the Yorkshire Landscape*.
Harrogate: Yorkshire Gardens Trust and Harrogate Borough Council

Phibbs 2017

Phibbs, J 2017 *Place-making The Art of Capability Brown*. Swindon: Historic
England

Rutherford

Rutherford, S 2016 *Capability Brown and His Landscape Gardens*. London:
National Trust Books

Shields

Shields, S 2016 *Moving Heaven and Earth: Capability Brown's Gift of Landscape*.
London: Unicorn

Spyers

Spyers, J 2016 *The Hampton Court Albums of Catherine the Great*. London:
Fontanka

Stroud

Stroud, D 1975 *Capability Brown*. (3rd edition) London: Faber & Faber

Sussex GT

Sussex Gardens Trust 2016 *'Capability' Brown in Sussex*. Sussex: Sussex Gardens
Trust

Turner

Turner, R 1999 *Capability Brown and the Eighteenth Century English Landscape*
Chichester: Phillimore

6.3 Web Resources

The list indicates the location of some reproductions online.

Further information on sites may be available from the following online references:

- National Heritage List for England
historicengland.org.uk/listing/the-list/
- Historic England Capability Brown Interactive Map including aerial photographs
services.historicengland.org.uk/capability-brown-map/index.html
- Parks & Gardens UK
www.parksandgardens.org/
- Capability Brown Festival
www.capabilitybrown.org/map (interactive map of sites)
www.capabilitybrown.org/research (for research resources and book list)

7 EXAMPLES OF ARCHITECTURAL DRAWINGS FROM BROWN'S OFFICE

The following drawings help to illustrate the range of architectural designs from Brown's Office from garden buildings to country houses and interiors, and estate buildings



Figure 1. Green house, elevation within a landscape setting Ashburnham Place, Sussex, 1767 (East Sussex Record Office Ref ASH 4358). Used by kind permission of The Ashburnham Heritage Trust and East Sussex Record Office. Copyright reserved.

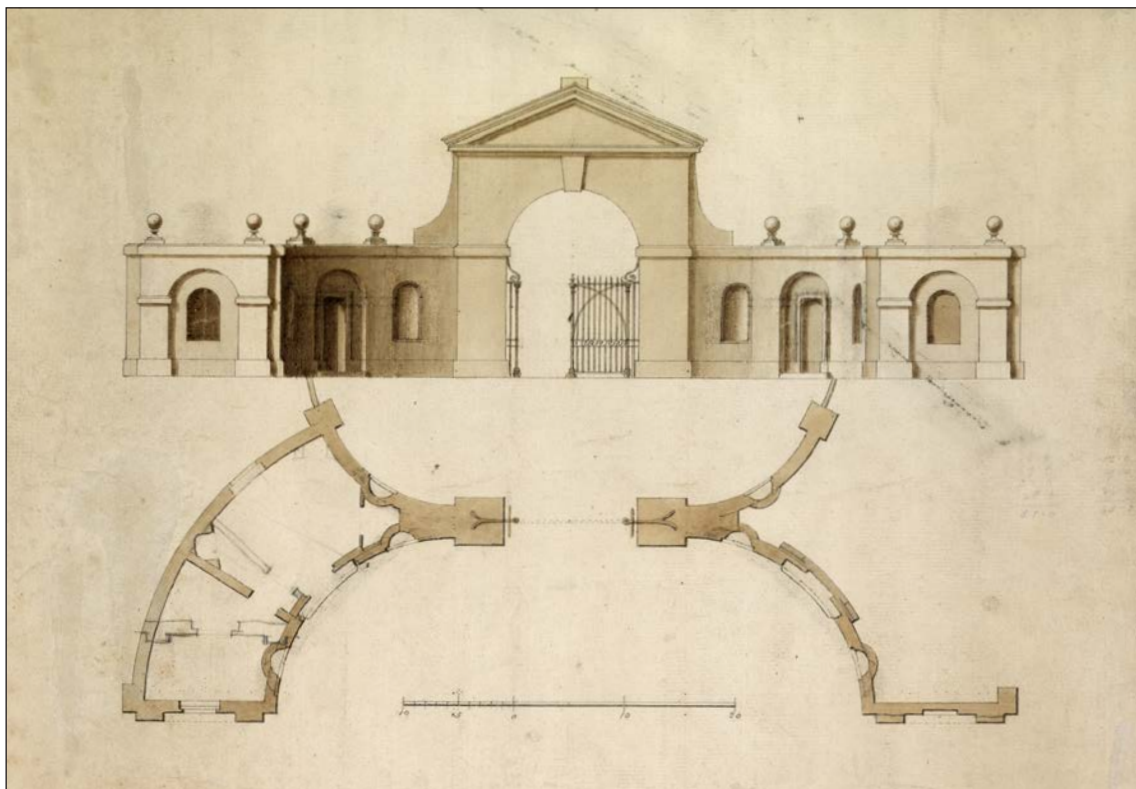


Figure 2. Gateway with lodges, plan and elevation, Ashburnham Place, Sussex, 1767 (East Sussex Record Office Ref ASH 4360). Used by kind permission of The Ashburnham Heritage Trust and East Sussex Record Office. Copyright reserved.

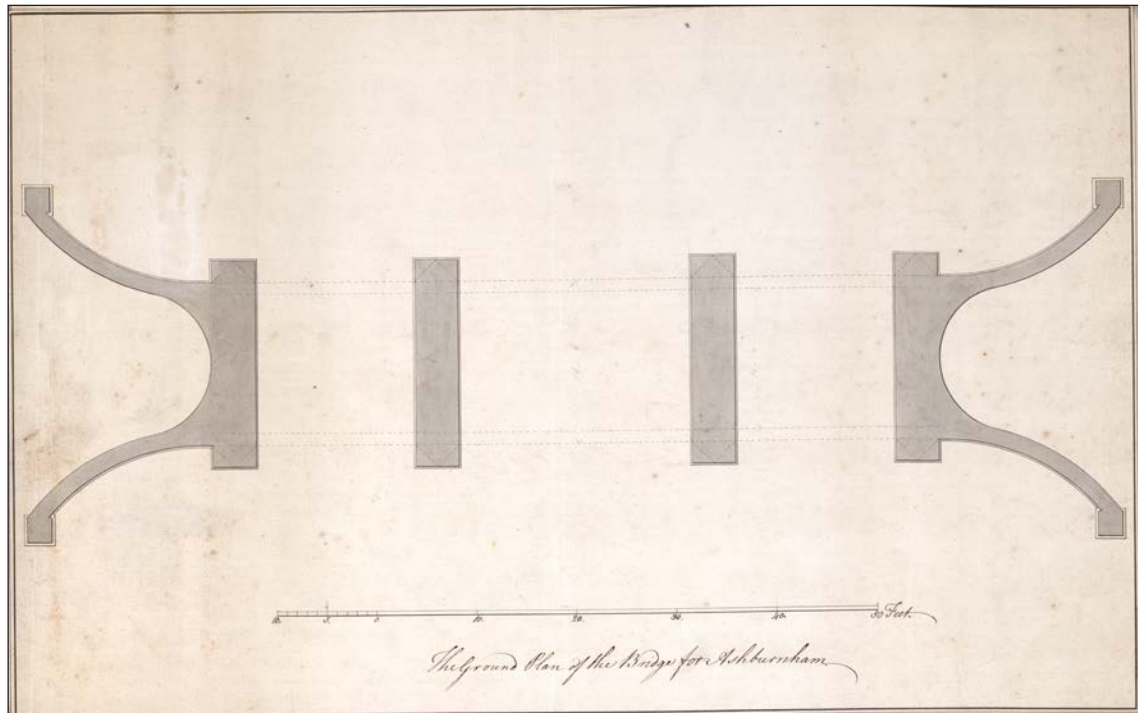


Figure 3. Three arch stone bridge, plan, Ashburnham Place, Sussex, 1767 (East Sussex Record Office Ref ASH 4362). Used by kind permission of The Ashburnham Heritage Trust and East Sussex Record Office. Copyright reserved.



Figure 4. Three arch stone bridge, perspective, Ashburnham Place, Sussex, 1767 (East Sussex Record Office Ref ASH 4357). Used by kind permission of The Ashburnham Heritage Trust and East Sussex Record Office. Copyright reserved.

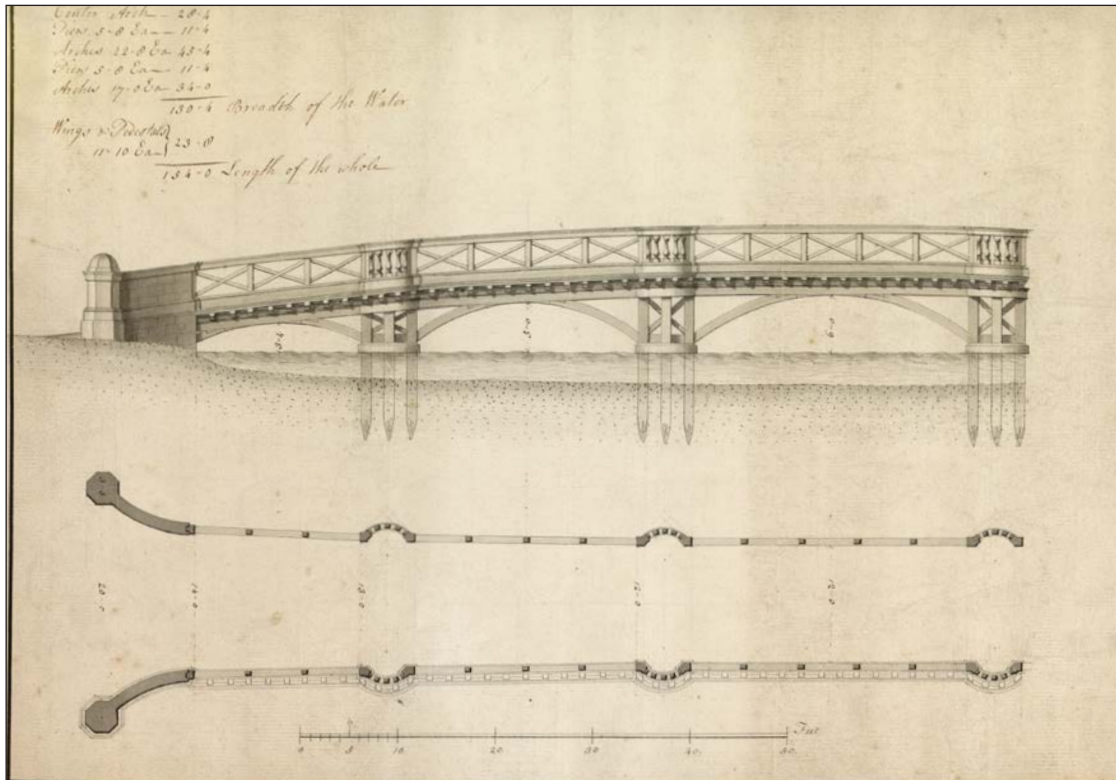


Figure 5. Timber bridge, plan and elevation, Ashburnham Place, Sussex, 1767 (East Sussex Record Office Ref ASH 4359). Used by kind permission of The Ashburnham Heritage Trust and East Sussex Record Office. Copyright reserved.

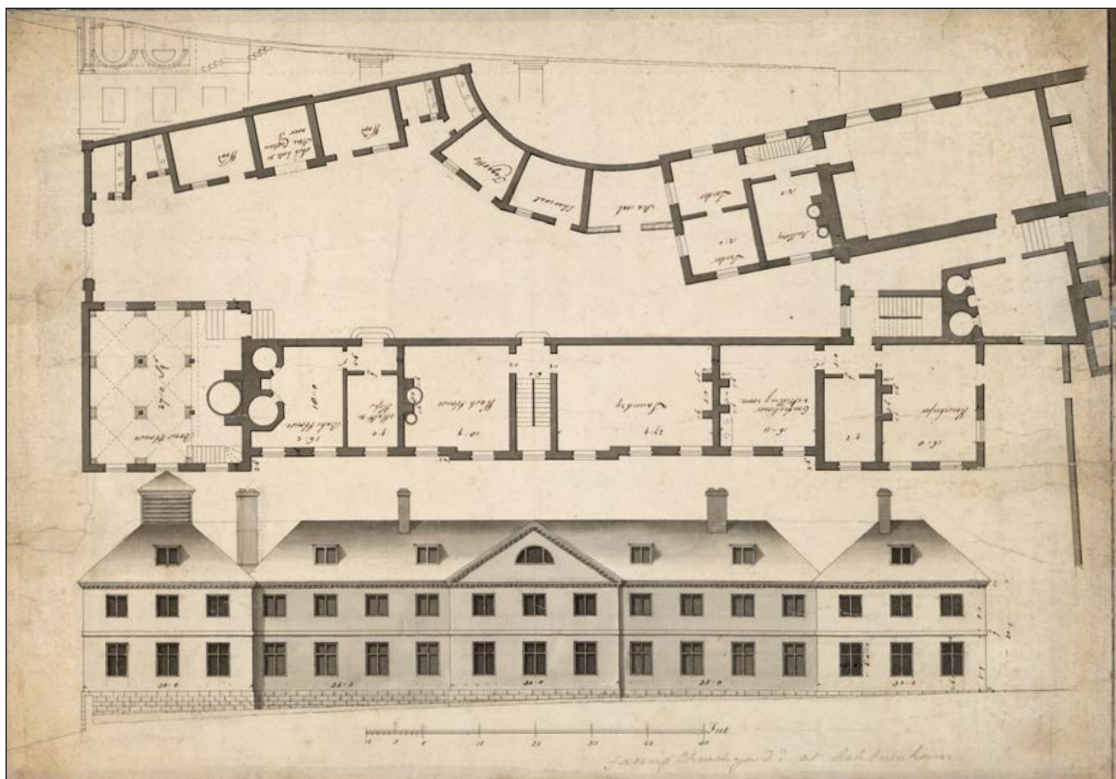


Figure 6. Offices, plan and elevation, Ashburnham Place, Sussex, 1767 (East Sussex Record Office Ref ASH 4361). Used by kind permission of The Ashburnham Heritage Trust and East Sussex Record Office. Copyright reserved.

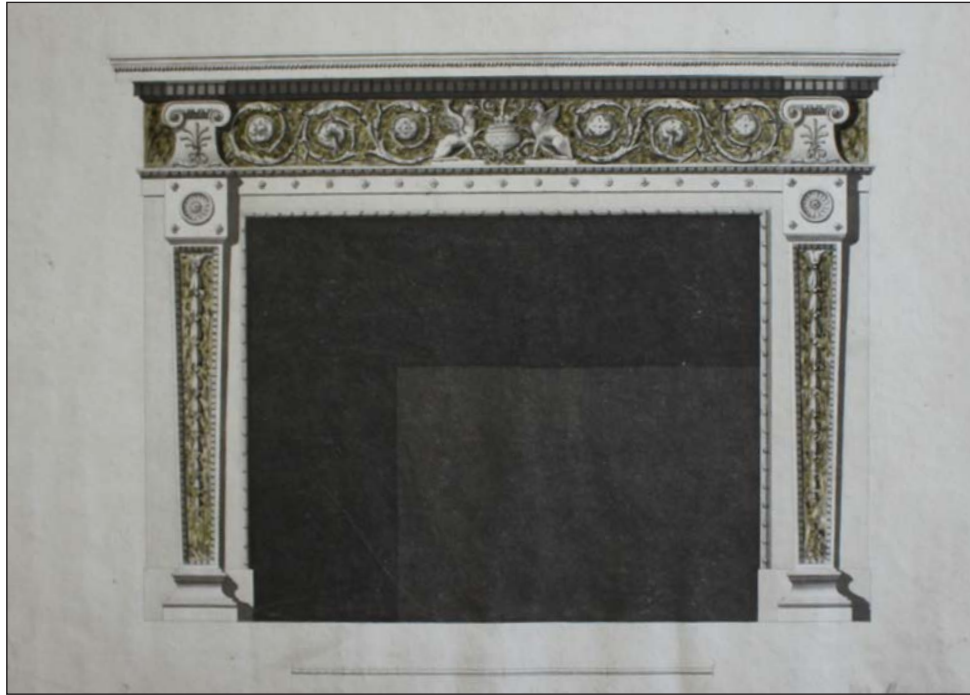


Figure 7. Chimneypiece design, Burton Constable Hall, East Yorkshire, 1760 (Burton Constable Foundation Collection LDS 1570)

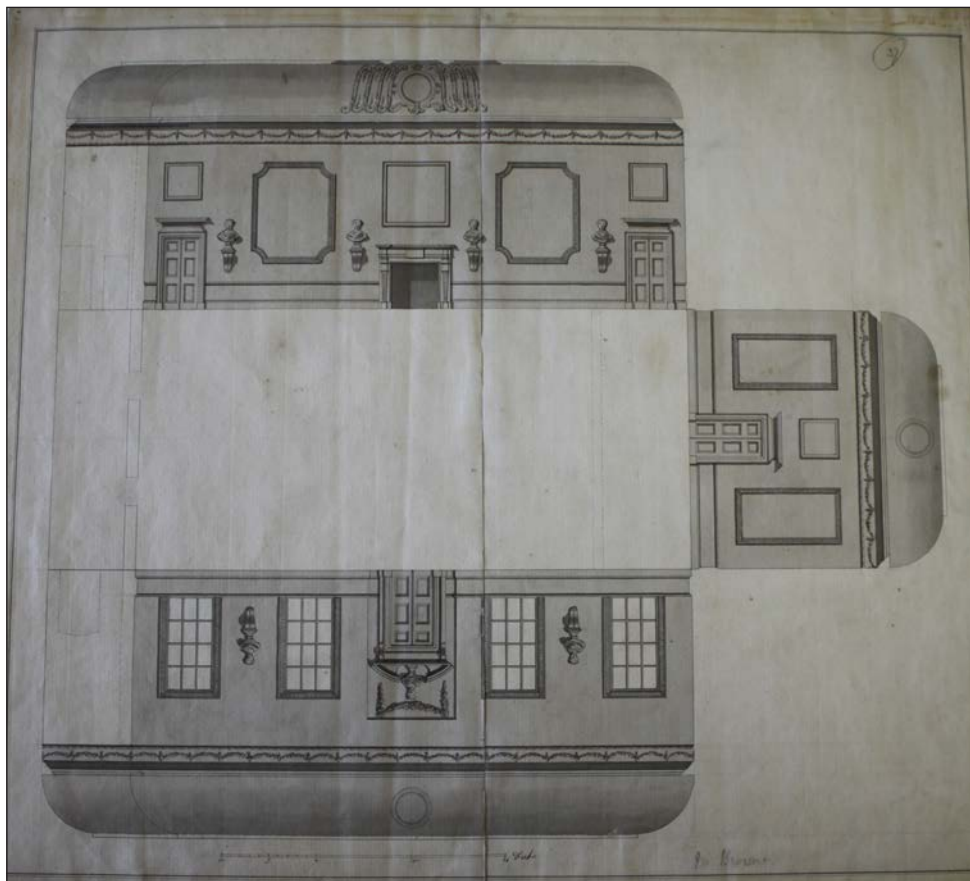


Figure 8. The Great Hall design, laid-out elevations, Burton Constable Hall, East Yorkshire, 1760 (Burton Constable Foundation Collection LDS 1615)

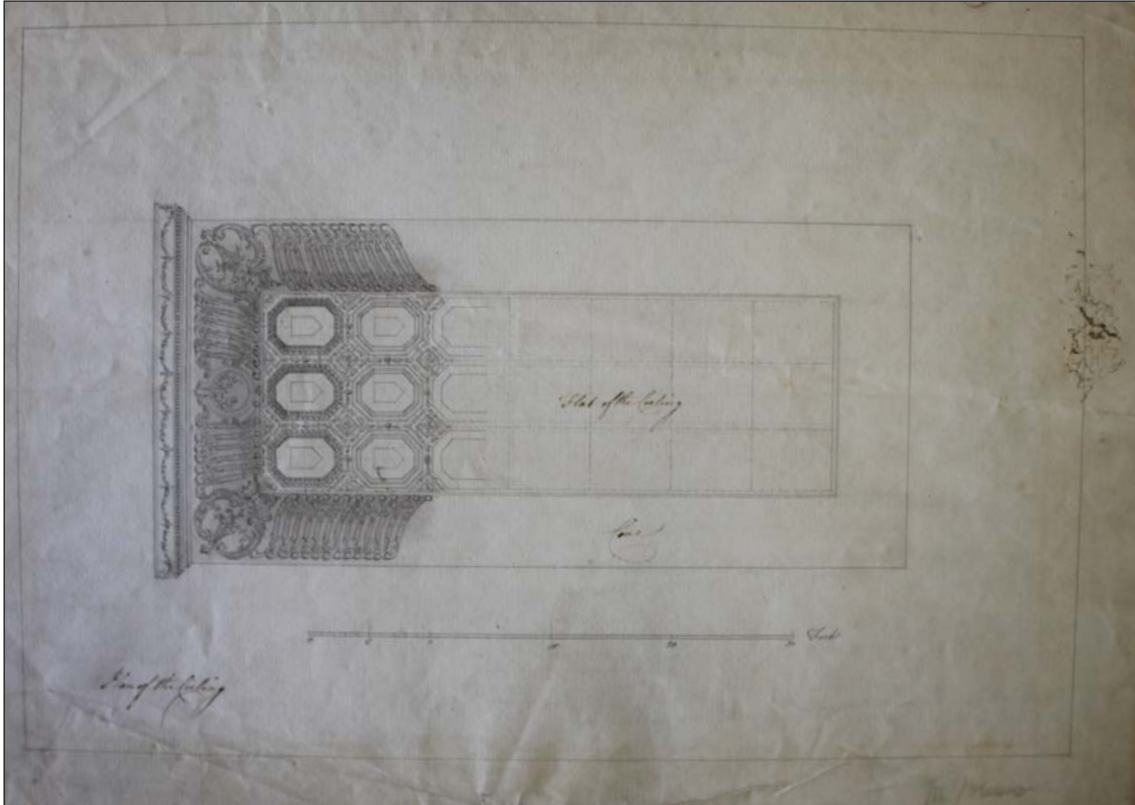


Figure 9. Ceiling design, Burton Constable Hall, East Yorkshire, 1750
(Burton Constable Foundation Collection LDS 1568)

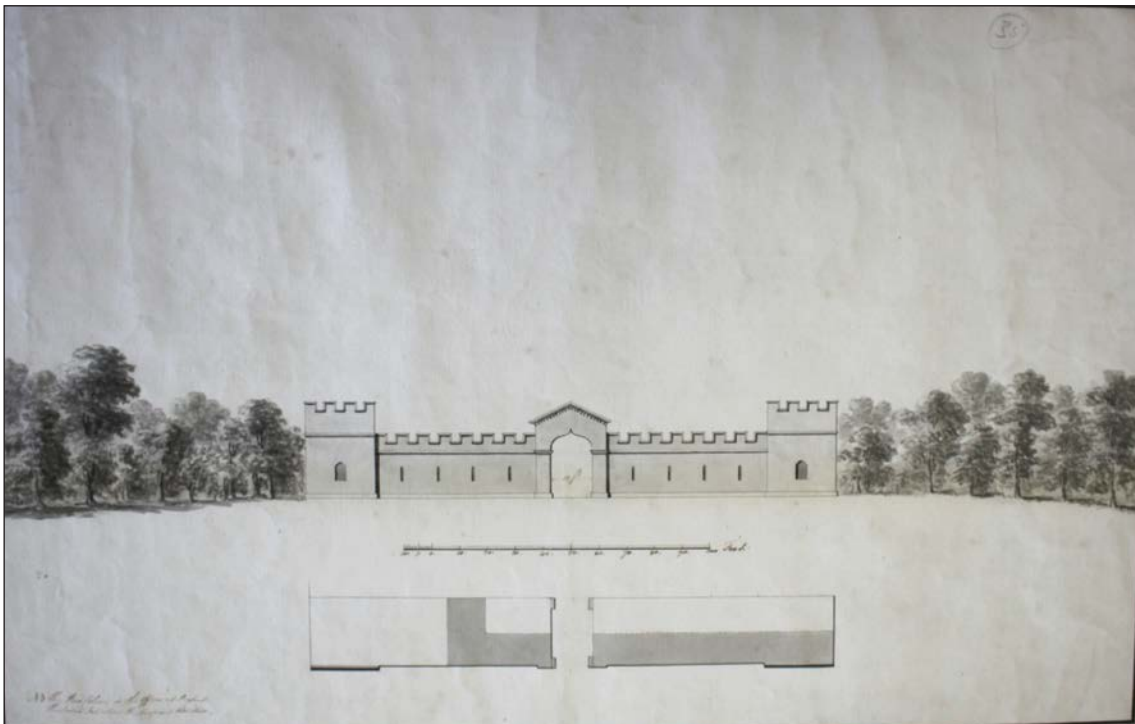


Figure 10. Mr. Brown's Plan of alterations for the offices at Burton Constable,
plan and elevation in landscape setting, Burton Constable Hall, East Yorkshire,
1772 (Burton Constable Foundation Collection LDS 1466)

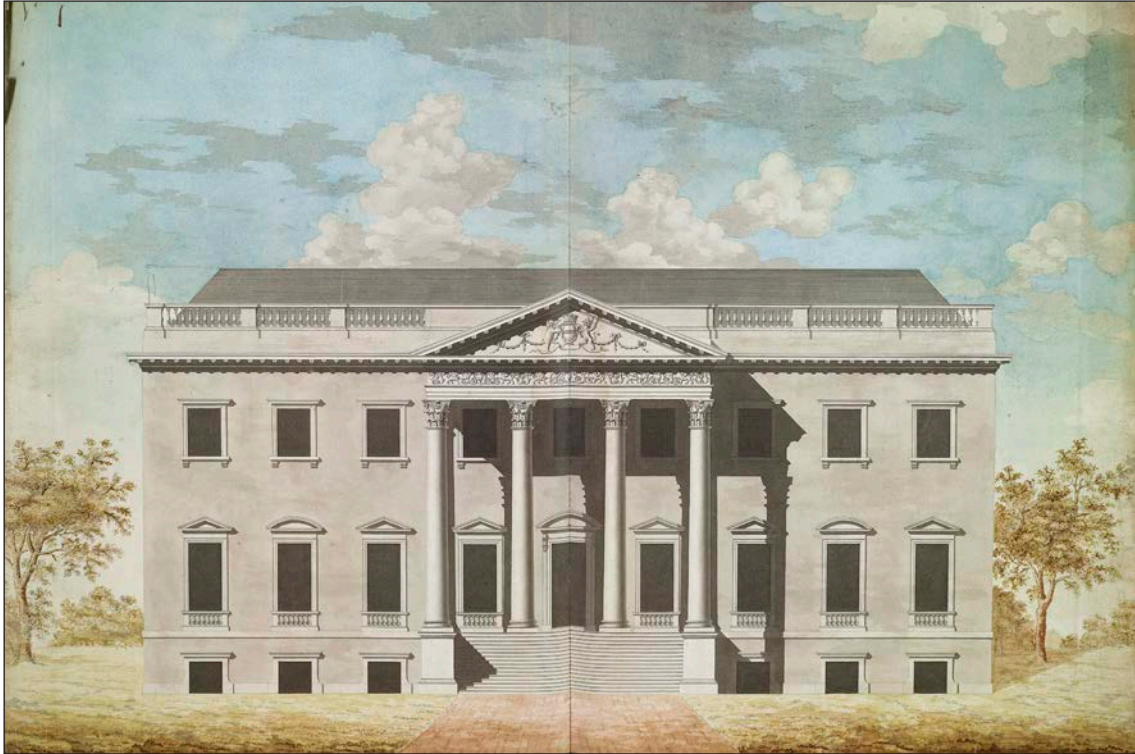


Figure 11. Elevation of the entrance façade, Claremont House, Surrey, 1771 RIBA VOS/120 (Copyright: RIBA Collections, RIBA PIX Ref No RIBA35746)

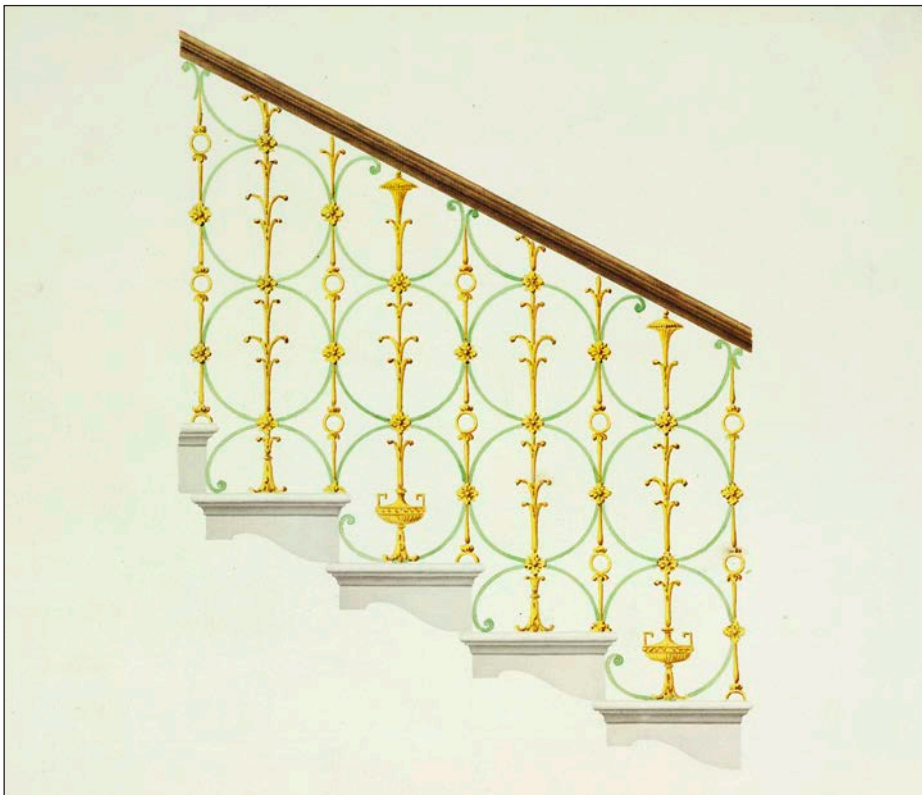


Figure 12. Bannister design, Claremont House, Surrey, 1771. RIBA VOS/120. (Copyright: RIBA Collections, RIBA PIX Ref No RIBA35742)

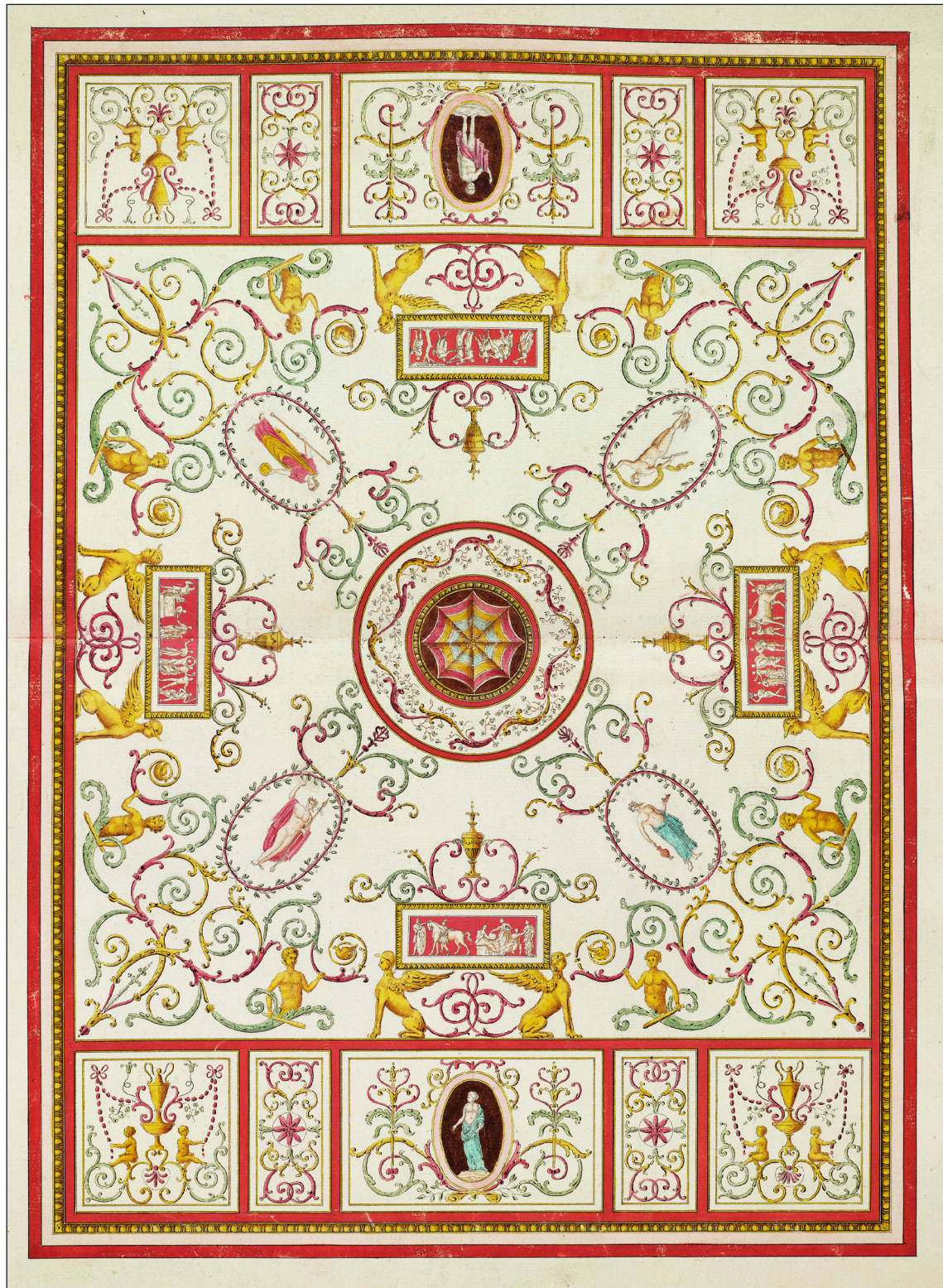


Figure 13. Ceiling design, Clarendon House, Surrey, 1771. RIBA VOS/120
(Copyright: RIBA Collections, RIBA PIX Ref No RIBA35754)

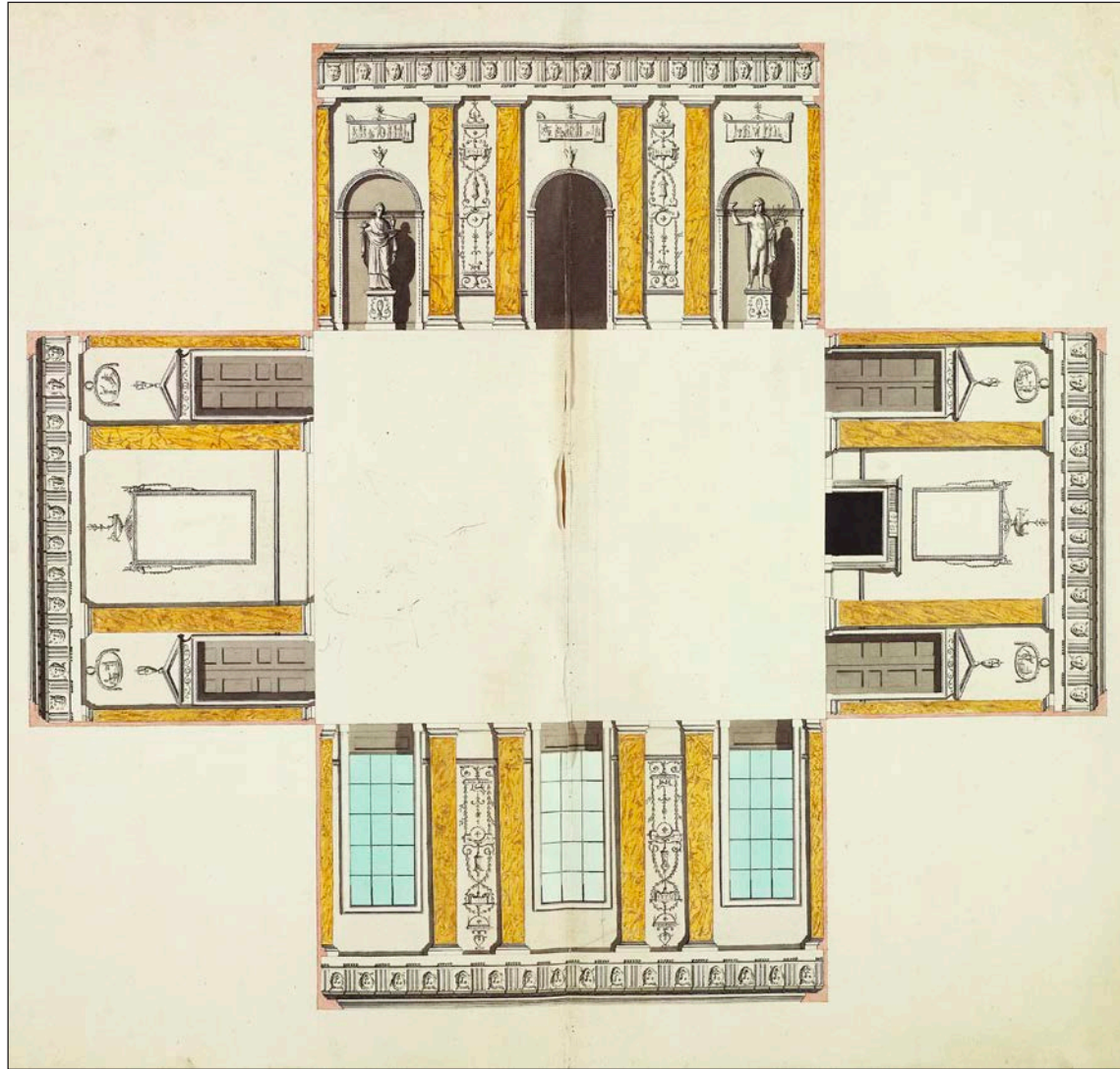


Figure 14. Interior design, laid-out elevations, Claremont House, Surrey, 1771.
RIBA VOS/120 (Copyright: RIBA Collections, RIBA PIX Ref No RIBA35732)



Figure 15. Gothic ruin, two elevations in a landscape setting, Milton Abbey, Dorset, n.d., RIBA SD41/18. (Copyright: RIBA Collections, RIBA PIX Ref No RIBA 37273)



Figure 16. Bridge, elevation in landscape setting, bridge, two alternative designs, The Hoo, Kimpton, Hertfordshire, n.d., c.1762. RIBA SD15/10. (Copyright: RIBA Collections, RIBA PIX Ref No RIBA37092)

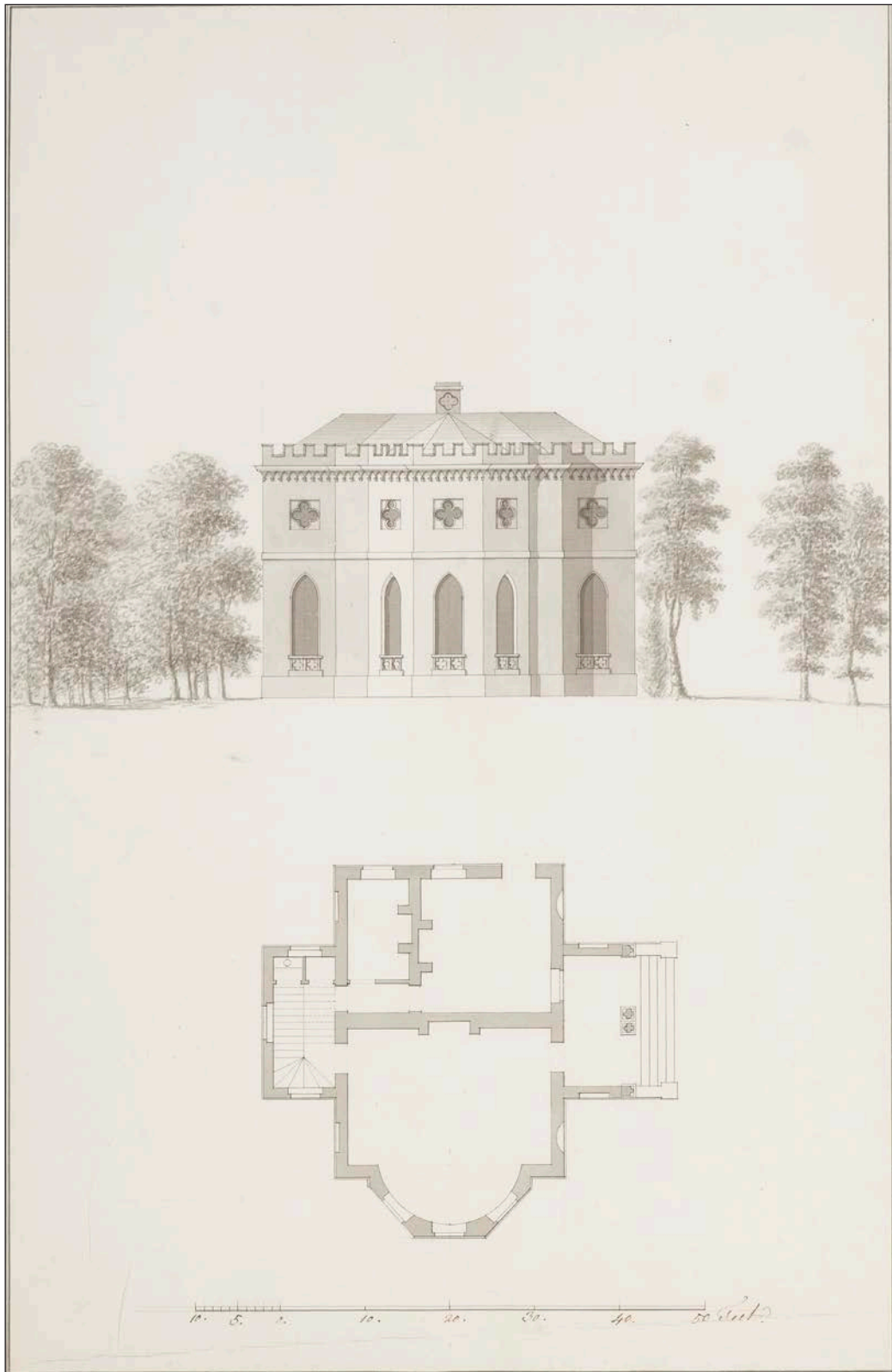


Figure 17. Banqueting house, side elevation with plan, to stand above Rothley Lower Lake, Northumberland, n.d. c.1760s. (National Trust Collections 582325.1) wallington@nationaltrust.org.uk www.nationaltrust.org.uk www.nationaltrust.org.uk/wallington/features/rothley-lake-a-hidden-gem

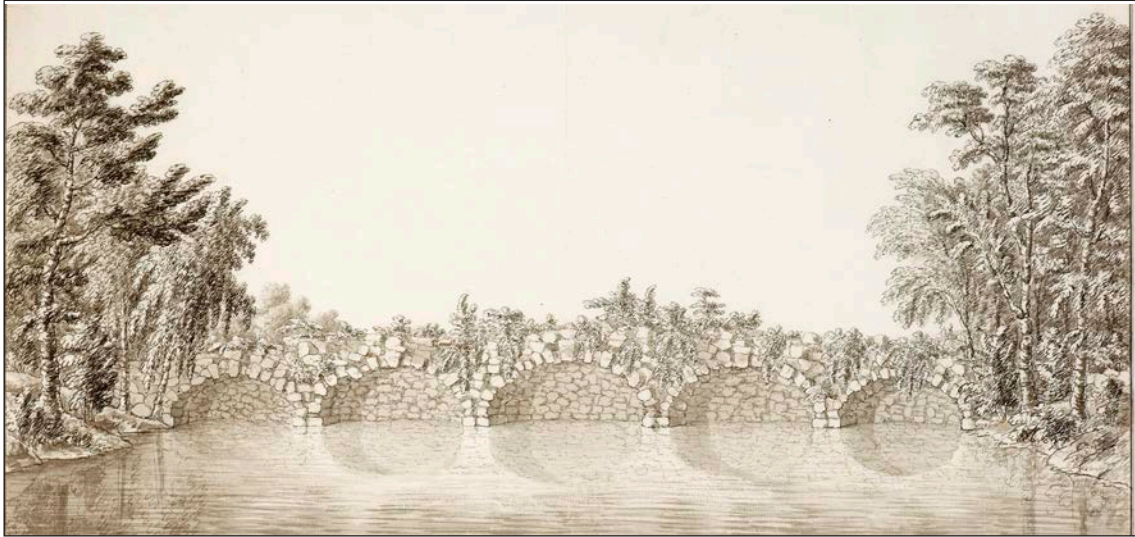


Figure 18. Sham bridge, perspective sketch for Rothley Lower Lake, Northumberland, n.d. c.1760s. (National Trust Collections 582324)

wallington@nationaltrust.org.uk

www.nationaltrust.org.uk

www.nationaltrust.org.uk/wallington/features/rothley-lake-a-hidden-gem

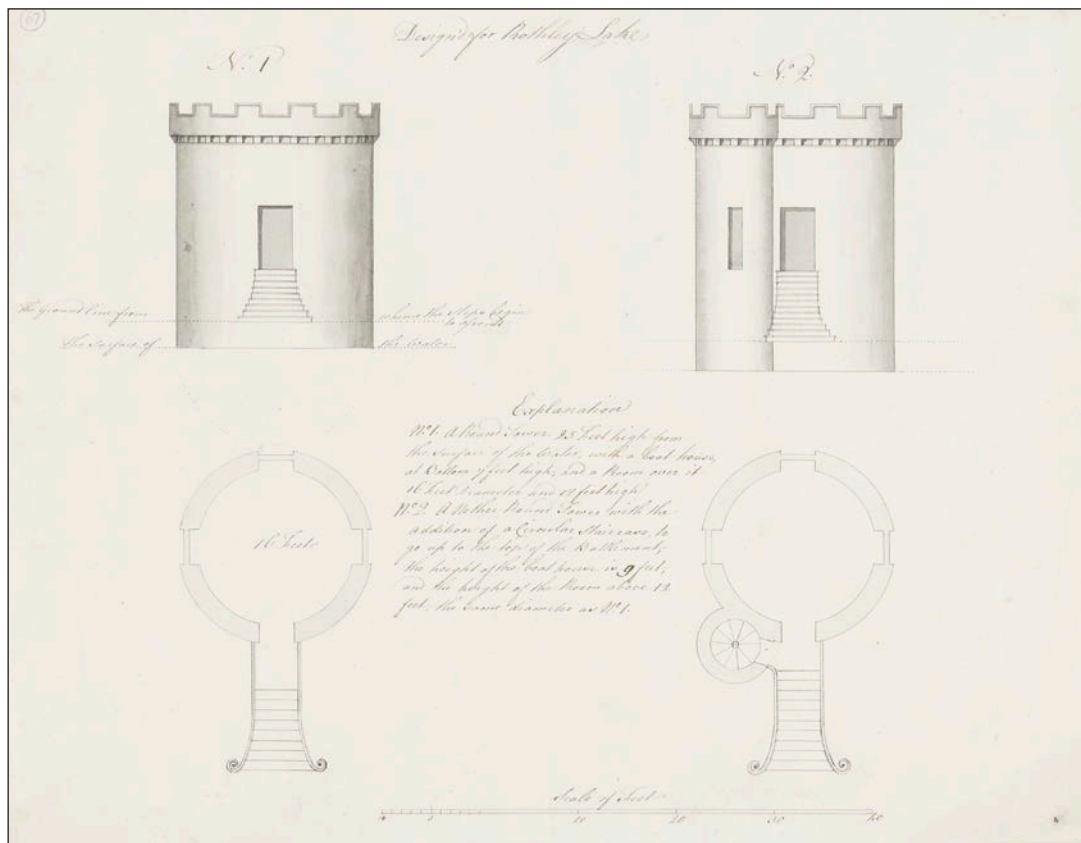


Figure 19. Round Tower, two alternative designs on one sheet, elevations with plans, to stand above Rothley Lower Lake, Northumberland, n.d. c.1760s. (National Trust Collections 582489)

wallington@nationaltrust.org.uk

www.nationaltrust.org.uk

www.nationaltrust.org.uk/wallington/features/rothley-lake-a-hidden-gem

8 THE CATALOGUE

A Reference Catalogue of Drawings by Lancelot Brown or his Office (c.1740s-83)

Adderbury House



Address

Adderbury House, Adderbury, Banbury, Oxfordshire, OX17 3PE

NHLE Registered Park & Garden entry number

n/a

NHLE Listed Building entry number for building in drawing

Subject of drawing

Garden seat/arbour, plan and elevation

Existence of drawing: Yes/unclear

Yes

Date

n.d., late 1760s

Provenance of Brown or his office: Definite/attributed/unknown

Definite

Current owner of drawing (if known)

National Records of Scotland

Original client (if possible)

Either Lady Greenwich's husband Charles Townshend, the Chancellor of the Exchequer, who made extensive improvements before his death in September 1767, or by Henry 3rd Duke of Buccleuch who was then given the estate by his mother Lady Greenwich and was making improvements in 1768.

Current location (if known)

National Records of Scotland

Archive/collection/catalogue number

RHP 13761

Reproduction

Notes

The existence of this drawing was kindly pointed out by Crispin Powell, Buccleugh Living Heritage Trust. There may be other items by Brown or his office in NRS collection nos RHP 13730-13777.

**Address**

Ashburnham Place, Battle, East Sussex, TN33 9NF

NHLE Registered Park & Garden entry number

1000145

NHLE Listed Building entry number for building in drawing**Subject of drawing**

Greenhouse, elevation within a landscape setting

Existence of drawing: Yes/unclear

Yes

Date

1767

Provenance of Brown or his office: Definite/attributed/unknown

Definite

Current owner of drawing (if known)

The Ashburnham Heritage Trust

Original client (if possible)

2nd Earl of Ashburnham

Current location (if known)

East Sussex Record Office

Archive/collection/catalogue number

ASH 4358

ReproductionSussex Gardens Trust 2016, Figs. 4, 31; *Garden History* 29:1 (2001) p.98**Notes**

Brown's suite of drawings for Ashburnham Place forms a remarkable archive of one of his commissions, including a survey and design plan. His design for the greenhouse is similar to buildings attributed to him at other Brown sites including Stoke Place (Buckinghamshire); Compton Verney, Warwickshire; Redgrave, Suffolk.

**Address**

Ashburnham Place, Battle, East Sussex, TN33 9NF

NHLE Registered Park & Garden entry number

1000145

NHLE Listed Building entry number for building in drawing**Subject of drawing**

Gateway with lodges, plan and elevation

Existence of drawing: Yes/unclear

Yes

Date

1767

Provenance of Brown or his office: Definite/attributed/unknown

Definite

Current owner of drawing (if known)

The Ashburnham Heritage Trust

Original client (if possible)

2nd Earl of Ashburnham

Current location (if known)

East Sussex Record Office

Archive/collection/catalogue number

ASH 4360

Reproduction

Sussex Gardens Trust 2016, Fig. 4

Notes

Brown's suite of drawings for Ashburnham Place forms a remarkable archive of one of his commissions, including a survey and design plan.

Ashburnham Place*Drawing 3 of 6***Address**

Ashburnham Place, Battle, East Sussex, TN33 9NF

NHLE Registered Park & Garden entry number

1000145

NHLE Listed Building entry number for building in drawing**Subject of drawing**

Three arch stone bridge, plan

Existence of drawing: Yes/unclear

Yes

Date

1767

Provenance of Brown or his office: Definite/attributed/unknown

Definite

Current owner of drawing (if known)

The Ashburnham Heritage Trust

Original client (if possible)

2nd Earl of Ashburnham

Current location (if known)

East Sussex Record Office

Archive/collection/catalogue number

ASH 4362

Reproduction**Notes**

Brown's suite of drawings for Ashburnham Place forms a remarkable archive of one of his commissions, including a survey and design plan.

Ashburnham Place*Drawing 4 of 6***Address**

Ashburnham Place, Battle, East Sussex, TN33 9NF

NHLE Registered Park & Garden entry number

1000145

NHLE Listed Building entry number for building in drawing**Subject of drawing**

Three arch stone bridge, perspective

Existence of drawing: Yes/unclear

Yes

Date

1767

Provenance of Brown or his office: Definite/attributed/unknown

Definite

Current owner of drawing (if known)

The Ashburnham Heritage Trust

Original client (if possible)

2nd Earl of Ashburnham

Current location (if known)

East Sussex Record Office

Archive/collection/catalogue number

ASH 4357

ReproductionSussex Gardens Trust 2016, Figs. 4, 15; *Garden History* 29:1 (2001) p.96**Notes**

Brown's suite of drawings for Ashburnham Place forms a remarkable archive of one of his commissions, including a survey and design plan.

Address	
Ashburnham Place, Battle, East Sussex, TN33 9NF	
NHLE Registered Park & Garden entry number	NHLE Listed Building entry number for building in drawing
1000145	
Subject of drawing	
Timber bridge, plan and elevation	
Existence of drawing: Yes/unclear	
Yes	
Date	
1767	
Provenance of Brown or his office: Definite/attributed/unknown	
Definite	
Current owner of drawing (if known)	
The Ashburnham Heritage Trust	
Original client (if possible)	
2nd Earl of Ashburnham	
Current location (if known)	
East Sussex Record Office	
Archive/collection/catalogue number	
ASH 4359	
Reproduction	
Shields, 198; Sussex Gardens Trust 2016, Figs. 4, 14	
Notes	
Brown's suite of drawings for Ashburnham Place forms a remarkable archive of one of his commissions, including a survey and design plan.	

Ashburnham Place*Drawing 6 of 6***Address**

Ashburnham Place, Battle, East Sussex, TN33 9NF

NHLE Registered Park & Garden entry number

1000145

NHLE Listed Building entry number for building in drawing**Subject of drawing**

Offices, plan and elevation

Existence of drawing: Yes/unclear

Yes

Date

1767

Provenance of Brown or his office: Definite/attributed/unknown

Definite

Current owner of drawing (if known)

The Ashburnham Heritage Trust

Original client (if possible)

2nd Earl of Ashburnham

Current location (if known)

East Sussex Record Office

Archive/collection/catalogue number

ASH 4361

Reproduction

Sussex Gardens Trust 2016, Fig. 4

Notes

Brown's suite of drawings for Ashburnham Place forms a remarkable archive of one of his commissions, including a survey and design plan.

The Backs



Address

The Backs, Queen's Road, Cambridge, Cambridgeshire, CB2 1TJ

NHLE Registered Park & Garden entry number

Clare College 1000617
King's College 1000624
St John's College 1000632
Trinity College 1000633
Queens' College 1000630

NHLE Listed Building entry number for building in drawing

Subject of drawing

Landscape capriccio on design plan with title fictively carved on block, in landscape setting with ruins

Existence of drawing: Yes/unclear

Yes

Date

n.d., 1776-8

Provenance of Brown or his office: Definite/attributed/unknown

Definite

Current owner of drawing (if known)

University of Cambridge

Original client (if possible)

University of Cambridge

Current location (if known)

University of Cambridge Library, Cambridge

Archive/collection/catalogue number

MS-UA-PI.3

Reproduction

Stroud, pls.56-57

Notes

Badminton*Drawing 1 of 2***Address**

Badminton, South Gloucestershire, GL9 1DB

NHLE Registered Park & Garden entry number

1000561

NHLE Listed Building entry number for building in drawing**Subject of drawing**

Temple on mound, perspective in landscape setting

Existence of drawing: Yes/unclear

Yes

Date

n.d., ?1750s

Provenance of Brown or his office: Definite/attributed/unknown

Definite

Current owner of drawing (if known)

Duke of Beaufort

Original client (if possible)

4th Duke of Beaufort

Current location (if known)

Badminton House archive

Archive/collection/catalogue number**Reproduction***Garden History* 29:1 (2001) pl.2; Brown & Williamson, p.79**Notes**

Badminton*Drawing 2 of 2***Address**

Badminton, South Gloucestershire, GL9 1DB

NHLE Registered Park & Garden entry number

1000561

NHLE Listed Building entry number for building in drawing

1320832

Subject of drawing

House, ground plan

Existence of drawing: Yes/unclear

Yes

Date

n.d., ?1750s

Provenance of Brown or his office: Definite/attributed/unknown

Definite

Current owner of drawing (if known)

Duke of Beaufort

Original client (if possible)

4th Duke of Beaufort

Current location (if known)

Badminton House archive

Archive/collection/catalogue number**Reproduction****Notes**

Stroud (1975) notes existence of ground plan of house, p.216.

Beechwood



Address

Beechwood Park School, Markyate, Hertfordshire, AL3 8AW

NHLE Registered Park & Garden entry number

n/a

NHLE Listed Building entry number for building in drawing

1348458

Subject of drawing

Ice house, section

Existence of drawing: Yes/no/unclear

Yes

Date

n.d., ?1754

Provenance of Brown or his office: Definite/attributed/unknown

Attributed

Current owner of drawing (if known)

Beechwood Trust Collection

Original client (if possible)

Sir Thomas Sebright, 5th Baronet

Current location (if known)

Beechwood Park School

Archive/collection/catalogue number

Reproduction

Shields, p.177

Notes

There may be other drawings in the Beechwood Park archive.

Belvoir Castle*Drawing 1 of 6***Address**

Belvoir Castle, Grantham, Leicestershire, NG32 1PA

NHLE Registered Park & Garden entry number

1000957

NHLE Listed Building entry number for building in drawing

1360870

Subject of drawing

Castle, elevation within a landscape setting

Existence of drawing: Yes/no/unclear

Yes

Date

1780

Provenance of Brown or his office: Definite/attributed/unknown

Definite

Current owner of drawing (if known)

11th Duke of Rutland

Original client (if possible)

4th Duke of Rutland

Current location (if known)

Belvoir Castle

Archive/collection/catalogue number**Reproduction**

Duchess of Rutland, p.25

Notes

In a leather bound folio embossed 'Drawings proposed for Belvoir Castle by Mr Browne in ten designs' on cover. Brown's suite of drawings for Belvoir Castle forms a remarkable archive of one of his commissions, including survey and design plans. The collection apparently contains more drawings than have been listed here.

Belvoir Castle*Drawing 2 of 6***Address**

Belvoir Castle, Grantham, Leicestershire, NG32 1PA

NHLE Registered Park & Garden entry number

1000957

NHLE Listed Building entry number for building in drawing

1360870

Subject of drawing

Castle, elevation within a landscape setting, alternative design

Existence of drawing: Yes/unclear

Yes

Date

1780

Provenance of Brown or his office: Definite/attributed/unknown

Definite

Current owner of drawing (if known)

11th Duke of Rutland

Original client (if possible)

4th Duke of Rutland

Current location (if known)

Belvoir Castle

Archive/collection/catalogue number**Reproduction**

Duchess of Rutland, p.25

Notes

In a leather bound folio embossed 'Drawings proposed for Belvoir Castle by Mr Browne in ten designs' on cover. Brown's suite of drawings for Belvoir Castle forms a remarkable archive of one of his commissions, including survey and design plans. The collection apparently contains more drawings than have been listed here.

Belvoir Castle*Drawing 3 of 6***Address**

Belvoir Castle, Grantham, Leicestershire, NG32 1PA

NHLE Registered Park & Garden entry number

1000957

NHLE Listed Building entry number for building in drawing

1360870

Subject of drawing

Castle, south-west elevation within a landscape setting

Existence of drawing: Yes/unclear

Yes

Date

1780

Provenance of Brown or his office: Definite/attributed/unknown

Definite

Current owner of drawing (if known)

11th Duke of Rutland

Original client (if possible)

4th Duke of Rutland

Current location (if known)

Belvoir Castle

Archive/collection/catalogue number**Reproduction**

Duchess of Rutland, pp.48-49

Notes

In a leather bound folio embossed 'Drawings proposed for Belvoir Castle by Mr Browne in ten designs' on cover. Brown's suite of drawings for Belvoir Castle forms a remarkable archive of one of his commissions, including survey and design plans. The collection apparently contains more drawings than have been listed here.

Belvoir Castle*Drawing 4 of 6***Address**

Belvoir Castle, Grantham, Leicestershire, NG32 1PA

NHLE Registered Park & Garden entry number

1000957

NHLE Listed Building entry number for building in drawing

1360870

Subject of drawing

Landscape capriccio on design plan with title fictively carved on hewn stone

Existence of drawing: Yes/unclear

Yes

Date

1780

Provenance of Brown or his office: Definite/attributed/unknown

Definite

Current owner of drawing (if known)

11th Duke of Rutland

Original client (if possible)

4th Duke of Rutland

Current location (if known)

Belvoir Castle

Archive/collection/catalogue number**Reproduction**

Duchess of Rutland, pp.4-5

Notes

On a large, rolled plan. Brown's suite of drawings for Belvoir Castle forms a remarkable archive of one of his commissions, including survey and design plans. The collection apparently contains more drawings than have been listed here.

Belvoir Castle*Drawing 5 of 6***Address**

Belvoir Castle, Grantham, Leicestershire, NG32 1PA

NHLE Registered Park & Garden entry number

1000957

NHLE Listed Building entry number for building in drawing**Subject of drawing**

Landscape capriccio on design plan with title fictively carved on hewn stone

Existence of drawing: Yes/unclear

Yes

Date

1780

Provenance of Brown or his office: Definite/attributed/unknown

Definite

Current owner of drawing (if known)

11th Duke of Rutland

Original client (if possible)

4th Duke of Rutland

Current location (if known)

Belvoir Castle

Archive/collection/catalogue number**Reproduction**

Duchess of Rutland, pp.16-17

Notes

Plan in a leather bound folio embossed 'Drawings proposed for Belvoir Castle by Mr Browne in ten designs' on cover. Brown's suite of drawings for Belvoir Castle forms a remarkable archive of one of his commissions, including survey and design plans. The collection apparently contains more drawings than have been listed here.

Belvoir Castle*Drawing 6 of 6***Address**

Belvoir Castle, Grantham, Leicestershire, NG32 1PA

NHLE Registered Park & Garden entry number

1000957

NHLE Listed Building entry number for building in drawing

1360870

Subject of drawing

Set of drawings entitled 'Original tracings of Belvoir Castle'

Existence of drawing: Yes/unclear

Yes

Date

1779

Provenance of Brown or his office: Definite/attributed/unknown

Attributed

Current owner of drawing (if known)

11th Duke of Rutland

Original client (if possible)

4th Duke of Rutland

Current location (if known)

Belvoir Castle

Archive/collection/catalogue number**Reproduction****Notes**

See J. Goodall, 'Belvoir Castle: From Norman Conquest to Regency Prodigy', *Country Life* (23 June 2019), www.countrylife.co.uk/architecture/belvoir-castle-normand-conquest-regency-prodigy-198307 accessed 24 June 2019. The collection apparently contains more drawings than have been listed here.

Blenheim Palace*Drawing 1 of 10***Address**

Blenheim Palace, Woodstock, Oxfordshire, OX20 1PP

NHLE Registered Park & Garden entry number

1000434

NHLE Listed Building entry number for building in drawing

1052918

Subject of drawing

High Lodge, plan and elevation

Existence of drawing: Yes/unclear

Yes

Date

1763

Provenance of Brown or his office: Definite/attributed/unknown

Definite

Current owner of drawing (if known)

12th Duke of Marlborough

Original client (if possible)


4th Duke of Marlborough

Current location (if known)

Blenheim Palace

Archive/collection/catalogue number**Reproduction****Notes**

Brown's suite of drawings for Blenheim Palace forms a remarkable archive of one of his commissions, including a survey and design plan.

Blenheim Palace		<i>Drawing 2 of 10</i>	
Address			
Blenheim Palace, Woodstock, Oxfordshire, OX20 1PP			
NHLE Registered Park & Garden entry number		NHLE Listed Building entry number for building in drawing	
1000434			
Subject of drawing			
Woodstock town wall proposal, perspective sketch of the lake, park and town			
Existence of drawing: Yes/unclear			
Yes			
Date			
n.d., c.1764			
Provenance of Brown or his office: Definite/attributed/unknown			
Definite			
Current owner of drawing (if known)			
12th Duke of Marlborough			
Original client (if possible)			
4th Duke of Marlborough			
Current location (if known)			
Blenheim Palace			
Archive/collection/catalogue number			
Reproduction			
Bapasola, pp.66-67; Rutherford, pp.52-53			
Notes			
Archival information kindly supplied by Blenheim Palace Archivist, Dr Alexa Frost. Brown's suite of drawings for Blenheim Palace forms a remarkable archive of one of his commissions, including a survey and design plan.			

Blenheim Palace*Drawing 3 of 10***Address**

Blenheim Palace, Woodstock, Oxfordshire, OX20 1PP

NHLE Registered Park & Garden entry number

1000434

NHLE Listed Building entry number for building in drawing**Subject of drawing**

Cascade, perspective sketch

Existence of drawing: Yes/unclear

Yes

Date

1764

Provenance of Brown or his office: Definite/attributed/unknown

Definite

Current owner of drawing (if known)

12th Duke of Marlborough

Original client (if possible)

4th Duke of Marlborough

Current location (if known)

Blenheim Palace

Archive/collection/catalogue number**Reproduction**

Stroud, pl.30a; Bapasola, p.64

Notes

Archival information kindly supplied by Blenheim Palace Archivist, Dr Alexa Frost. Brown's suite of drawings for Blenheim Palace forms a remarkable archive of one of his commissions, including a survey and design plan.

Blenheim Palace*Drawing 4 of 10***Address**

Blenheim Palace, Woodstock, Oxfordshire, OX20 1PP

NHLE Registered Park & Garden entry number

1000434

NHLE Listed Building entry number for building in drawing

1052877

Subject of drawing

Park Farm Granary, plan and elevation

Existence of drawing: Yes/unclear

Yes

Date

1765

Provenance of Brown or his office: Definite/attributed/unknown

Definite

Current owner of drawing (if known)

12th Duke of Marlborough

Original client (if possible)

4th Duke of Marlborough

Current location (if known)

Blenheim Palace

Archive/collection/catalogue number**Reproduction**

Stroud, pl.30b; Bapasola, p.82

Notes

Archival information kindly supplied by Blenheim Palace Archivist, Dr Alexa Frost. Brown's suite of drawings for Blenheim Palace forms a remarkable archive of one of his commissions, including a survey and design plan.

Blenheim Palace*Drawing 5 of 10***Address**

Blenheim Palace, Woodstock, Oxfordshire, OX20 1PP

NHLE Registered Park & Garden entry number

1000434

NHLE Listed Building entry number for building in drawing**Subject of drawing**

Gate lodges and entrance screen, plan and elevation in landscape setting

Existence of drawing: Yes/unclear

Yes

Date

n.d., mid-1760s

Provenance of Brown or his office: Definite/attributed/unknown

Definite

Current owner of drawing (if known)

12th Duke of Marlborough

Original client (if possible)

4th Duke of Marlborough

Current location (if known)

Blenheim Palace

Archive/collection/catalogue number**Reproduction**

Stroud, pl.30c; Bapasola, p.85

Notes

Archival information kindly supplied by Blenheim Palace Archivist, Dr Alexa Frost. Brown's suite of drawings for Blenheim Palace forms a remarkable archive of one of his commissions, including a survey and design plan.

**Address**

Blenheim Palace, Woodstock, Oxfordshire, OX20 1PP

NHLE Registered Park & Garden entry number

1000434

NHLE Listed Building entry number for building in drawing**Subject of drawing**Bathing House at Rosamund's Well,
plan and front elevation**Existence of drawing: Yes/unclear**

Yes

Date

n.d., mid-1760s

Provenance of Brown or his office: Definite/attributed/unknown

Definite

Current owner of drawing (if known)

12th Duke of Marlborough

Original client (if possible)

4th Duke of Marlborough

Current location (if known)

Blenheim Palace

Archive/collection/catalogue number**Reproduction**

Stroud, pl.31; Bapasola, p.68

Notes

Archival information kindly supplied by Blenheim Palace Archivist, Dr Alexa Frost. Brown's suite of drawings for Blenheim Palace forms a remarkable archive of one of his commissions, including a survey and design plan.

Blenheim Palace*Drawing 7 of 10***Address**

Blenheim Palace, Woodstock, Oxfordshire, OX20 1PP

NHLE Registered Park & Garden entry number

1000434

NHLE Listed Building entry number for building in drawing**Subject of drawing**Bathing House at Rosamund's Well,
plan and rear elevation**Existence of drawing: Yes/unclear**

Yes

Date

n.d., mid-1760s

Provenance of Brown or his office: Definite/attributed/unknown

Definite

Current owner of drawing (if known)

12th Duke of Marlborough

Original client (if possible)

4th Duke of Marlborough

Current location (if known)

Blenheim Palace

Archive/collection/catalogue number**Reproduction**

Bapasola, p.68

Notes

Archival information kindly supplied by Blenheim Palace Archivist, Dr Alexa Frost. Brown's suite of drawings for Blenheim Palace forms a remarkable archive of one of his commissions, including a survey and design plan.



Address	
Blenheim Palace, Woodstock, Oxfordshire, OX20 1PP	
NHLE Registered Park & Garden entry number	NHLE Listed Building entry number for building in drawing
1000434	
Subject of drawing	
Bathing House at Rosamund's Well, plan and side elevation	
Existence of drawing: Yes/unclear	
Yes	
Date	
n.d., mid-1760s	
Provenance of Brown or his office: Definite/attributed/unknown	
Definite	
Current owner of drawing (if known)	
12th Duke of Marlborough	
Original client (if possible)	
4th Duke of Marlborough	
Current location (if known)	
Blenheim Palace	
Archive/collection/catalogue number	
Reproduction	
Notes	
Archival information kindly supplied by Blenheim Palace Archivist, Dr Alexa Frost. Brown's suite of drawings for Blenheim Palace forms a remarkable archive of one of his commissions, including a survey and design plan.	

**Address**

Blenheim Palace, Woodstock, Oxfordshire, OX20 1PP

NHLE Registered Park & Garden entry number

1000434

NHLE Listed Building entry number for building in drawing**Subject of drawing**

Rotunda, elevation

Existence of drawing: Yes/unclear

Yes

Date

n.d., mid-1760s

Provenance of Brown or his office: Definite/attributed/unknown

Definite

Current owner of drawing (if known)

12th Duke of Marlborough

Original client (if possible)

4th Duke of Marlborough

Current location (if known)

Blenheim Palace

Archive/collection/catalogue number**Reproduction****Notes**

Archival information kindly supplied by Blenheim Palace Archivist, Dr Alexa Frost. Brown's suite of drawings for Blenheim Palace forms a remarkable archive of one of his commissions, including a survey and design plan.

Blenheim Palace*Drawing 10 of 10***Address**

Blenheim Palace, Woodstock, Oxfordshire, OX20 1PP

NHLE Registered Park & Garden entry number

1000434

NHLE Listed Building entry number for building in drawing**Subject of drawing**

Landscape capriccio on survey plan with title fictively carved on a block

Existence of drawing: Yes/unclear

Yes

Date

1763

Provenance of Brown or his office: Definite/attributed/unknown

Definite

Current owner of drawing (if known)

Canadian Centre for Architecture

Original client (if possible)

4th Duke of Marlborough

Current location (if known)

Canadian Centre for Architecture

Archive/collection/catalogue number

DR 1985:0416

Reproduction

Bapasola, pp.58-59; Spyers, p.24

Notes

Archival information kindly supplied by Blenheim Palace Archivist, Dr Alexa Frost. Brown's suite of drawings for Blenheim Palace forms a remarkable archive of one of his commissions, including a survey and design plan.

Broadlands



Address

Broadlands, Romsey, Hampshire, SO51 9ZD

NHLE Registered Park & Garden entry number

1000166

NHLE Listed Building entry number for building in drawing

141166

Subject of drawing

House, south front elevation

Existence of drawing: Yes/unclear

Unclear

Date

n.d., c.1767-71

Provenance of Brown or his office: Definite/attributed/unknown

Definite

Current owner of drawing (if known)

Unknown

Original client (if possible)

2nd Viscount Palmerston

Current location (if known)

Unknown

Archive/collection/catalogue number

Reproduction

Stroud, pl.25b; Turner, p.103

Notes

Burghley*Drawing 1 of 8***Address**

Burghley House, Stamford, Lincolnshire, PE9 3JY

NHLE Registered Park & Garden entry number

1000359

NHLE Listed Building entry number for building in drawing

1127501

Subject of drawing

House, south front elevation

Existence of drawing: Yes/unclear

Yes

Date

n.d., c.1755-60

Provenance of Brown or his office: Definite/attributed/unknown

Definite

Current owner of drawing (if known)

The Burghley House Preservation Trust

Original client (if possible)

9th Earl of Exeter

Current location (if known)


The Burghley House Collection

Archive/collection/catalogue number

The Burghley House Collection PIC827

ReproductionShields, p.165; *Garden History* 2016, 44 suppl. 1, p.56**Notes**

Archival information kindly supplied by Burghley House Archivist Jon Culverhouse. Brown's suite of drawings for Burghley forms a remarkable archive of one of his commissions, including a design plan.

Burghley		<i>Drawing 2 of 8</i>	
Address			
Burghley House, Stamford, Lincolnshire, PE9 3JY			
NHLE Registered Park & Garden entry number		NHLE Listed Building entry number for building in drawing	
1000359		1127501	
Subject of drawing			
House, north front elevation			
Existence of drawing: Yes/unclear			
Yes			
Date			
n.d., c.1755-60			
Provenance of Brown or his office: Definite/attributed/unknown			
Definite			
Current owner of drawing (if known)			
The Burghley House Preservation Trust			
Original client (if possible)			
9th Earl of Exeter			
Current location (if known)			
The Burghley House Collection			
Archive/collection/catalogue number			
The Burghley House Collection PIC824			
Reproduction			
<i>Garden History</i> 2016, 44 suppl. 1, p.58			
Notes			
Archival information kindly supplied by Burghley House Archivist Jon Culverhouse. Brown's suite of drawings for Burghley forms a remarkable archive of one of his commissions, including a design plan.			

Burghley*Drawing 3 of 8***Address**

Burghley House, Stamford, Lincolnshire, PE9 3JY

NHLE Registered Park & Garden entry number

1000359

NHLE Listed Building entry number for building in drawing

1127501

Subject of drawing

House, west front elevation

Existence of drawing: Yes/unclear

Yes

Date

n.d.

Provenance of Brown or his office: Definite/attributed/unknown

Definite

Current owner of drawing (if known)

The Burghley House Preservation Trust

Original client (if possible)

9th Earl of Exeter

Current location (if known)

The Burghley House Collection

Archive/collection/catalogue number

The Burghley House Collection PIC766

Reproduction**Notes**

Archival information kindly supplied by Burghley House Archivist Jon Culverhouse. Brown's suite of drawings for Burghley forms a remarkable archive of one of his commissions, including a design plan.

**Address**

Burghley House, Stamford, Lincolnshire, PE9 3JY

NHLE Registered Park & Garden entry number

1000359

NHLE Listed Building entry number for building in drawing

1127501

Subject of drawing

Chapel, Gothick arcade design

Existence of drawing: Yes/unclear

Yes

Date

n.d.

Provenance of Brown or his office: Definite/attributed/unknown

Definite

Current owner of drawing (if known)

The Burghley House Preservation Trust

Original client (if possible)

9th Earl of Exeter

Current location (if known)

The Burghley House Collection

Archive/collection/catalogue number

The Burghley House Collection PIC816

Reproduction**Notes**

Archival information kindly supplied by Burghley House Archivist Jon Culverhouse. Brown's suite of drawings for Burghley forms a remarkable archive of one of his commissions, including a design plan.

Burghley*Drawing 5 of 8***Address**

Burghley House, Stamford, Lincolnshire, PE9 3JY

NHLE Registered Park & Garden entry number

1000359

NHLE Listed Building entry number for building in drawing

1127502

Subject of drawing

Stable, front elevation

Existence of drawing: Yes/unclear

Yes

Date

n.d.

Provenance of Brown or his office: Definite/attributed/unknown

Definite

Current owner of drawing (if known)

The Burghley House Preservation Trust

Original client (if possible)

9th Earl of Exeter

Current location (if known)

The Burghley House Collection

Archive/collection/catalogue number

The Burghley House Collection PIC817

Reproduction**Notes**

Archival information kindly supplied by Burghley House Archivist Jon Culverhouse. Brown's suite of drawings for Burghley forms a remarkable archive of one of his commissions, including a design plan.

Burghley*Drawing 6 of 8***Address**

Burghley House, Stamford, Lincolnshire, PE9 3JY

NHLE Registered Park & Garden entry number

1000359

NHLE Listed Building entry number for building in drawing**Subject of drawing**

Obelisk in Middle Court, elevation

Existence of drawing: Yes/unclear

Yes

Date

n.d.

Provenance of Brown or his office: Definite/attributed/unknown

Definite

Current owner of drawing (if known)

The Burghley House Preservation Trust

Original client (if possible)

9th Earl of Exeter

Current location (if known)

The Burghley House Collection

Archive/collection/catalogue number

The Burghley House Collection PIC826

Reproduction**Notes**

Archival information kindly supplied by Burghley House Archivist Jon Culverhouse. Brown's suite of drawings for Burghley forms a remarkable archive of one of his commissions, including a design plan.

Burghley*Drawing 7 of 8***Address**

Burghley House, Stamford, Lincolnshire, PE9 3JY

NHLE Registered Park & Garden entry number

1000359

NHLE Listed Building entry number for building in drawing**Subject of drawing**

Forcing frames, moveable

Existence of drawing: Yes/unclear

Yes

Date

n.d.

Provenance of Brown or his office: Definite/attributed/unknown

Attributed

Current owner of drawing (if known)

The Burghley House Preservation Trust

Original client (if possible)

9th Earl of Exeter

Current location (if known)

The Burghley House Collection

Archive/collection/catalogue number

The Burghley House Collection PIC831

Reproduction**Notes**

Archival information kindly supplied by Burghley House Archivist Jon Culverhouse. Brown's suite of drawings for Burghley forms a remarkable archive of one of his commissions, including a design plan.

Burghley*Drawing 8 of 8***Address**

Burghley House, Stamford, Lincolnshire, PE9 3JY

NHLE Registered Park & Garden entry number

1000359

NHLE Listed Building entry number for building in drawing

1127501

Subject of drawing

House and offices, plan

Existence of drawing: Yes/unclear

Yes

Date

1756

Provenance of Brown or his office: Definite/attributed/unknown

C19 copy by W.D. Legg of lost 1756 plan

Current owner of drawing (if known)

The Burghley House Preservation Trust

Original client (if possible)

9th Earl of Exeter

Current location (if known)

The Burghley House Collection

Archive/collection/catalogue number

The Burghley House Collection PIC825

Reproduction**Notes**

Archival information kindly supplied by Burghley House Archivist Jon Culverhouse. Brown's suite of drawings for Burghley forms a remarkable archive of one of his commissions, including a design plan.

Burton Constable*Drawing 1 of 6***Address**

Burton Constable Hall, Skirlaugh, East Yorkshire, HU11 4LN

NHLE Registered Park & Garden entry number

1000921

NHLE Listed Building entry number for building in drawing

1366245

Subject of drawing

Stable yard/offices, plan and elevation in landscape setting

Existence of drawing: Yes/unclear

Yes

Date

1772

Provenance of Brown or his office: Definite/attributed/unknown

Attributed

Current owner of drawing (if known)

The Burton Constable Foundation

Original client (if possible)

William Constable

Current location (if known)

Burton Constable

Archive/collection/catalogue number

LDS 1466

Reproduction

Lynch, pp.38-39; Stroud, pl.50b

Notes

Archival information kindly provided by Burton Constable curator, Philippa Wood.

**Address**

Burton Constable Hall, Skirlaugh, East Yorkshire, HU11 4LN

NHLE Registered Park & Garden entry number

1000921

NHLE Listed Building entry number for building in drawing

1083448

Subject of drawing

Sham bridge/dam, cross section

Existence of drawing: Yes/unclear

Yes

Date

May 1778

Provenance of Brown or his office: Definite/attributed/unknown

Definite

Current owner of drawing (if known)

The Burton Constable Foundation

Original client (if possible)

William Constable

Current location (if known)

Burton Constable

Archive/collection/catalogue number

LDS 1462

Reproduction*Garden History* 1995, 23:2, p.152**Notes**

Archival information kindly provided by Burton Constable curator, Philippa Wood. The design has written upon it by hand 'A Section through the centre of the intended bridge at Burton Constable in Yorkshire - the Seat of William Constable Esq.' but is unsigned. As it is dated May 1778 and does appear to show the existing bridge, I am fairly confident in Elisabeth Hall's identification of it as Brown's work.' (this refers to the *Garden History* article, 1995).

Burton Constable *Drawing 3 of 6***Address**

Burton Constable Hall, Skirlaugh, East Yorkshire, HU11 4LN

NHLE Registered Park & Garden entry number

1000921

NHLE Listed Building entry number for building in drawing**Subject of drawing**

Stockade for ha-ha, elevation and detail

Existence of drawing: Yes/unclear

Yes

Date

n.d., c.1778

Provenance of Brown or his office: Definite/attributed/unknown

Definite

Current owner of drawing (if known)

Unclear

Original client (if possible)

William Constable

Current location (if known)

Unclear, possibly in private collection.

Archive/collection/catalogue number**Reproduction***Garden History* 1995, 23:2, p.168**Notes**

Drawing endorsed 'Mr Brown stuccade Feb 26th 1782'. Archival information kindly provided by Burton Constable curator, Philippa Wood.

Burton Constable*Drawing 4 of 6***Address**

Burton Constable Hall, Skirlaugh, East Yorkshire, HU11 4LN

NHLE Registered Park & Garden entry number

1000921

NHLE Listed Building entry number for building in drawing

1083444

Subject of drawing

Ceiling for the Great Hall, plan

Existence of drawing: Yes/unclear

Yes

Date

1750

Provenance of Brown or his office: Definite/attributed/unknown

Definite

Current owner of drawing (if known)

The Burton Constable Foundation

Original client (if possible)

William Constable

Current location (if known)

Burton Constable

Archive/collection/catalogue number

LDS 1568

Reproduction

Stroud, pl.15b

Notes

Archival information kindly provided by Burton Constable curator, Philippa Wood. Plan of the Ceiling 35.5 x 49 cm. (Proposal/design for the ceiling of the Great Hall). William Constable's first engagement with Lancelot Brown was in the 1750s, when he commissioned Brown, along with several other noted architects, including John Carr (1723-1807) and Timothy Lightoler (1727-69), to supply him with fashionable designs for the Great Hall. Brown supplied a sectional layout plan accompanied by a further design for a deeply coved ceiling. However, William favoured Lightoler's 'Jacobethan' scheme with rococo details. Despite being rejected by William, Brown's design evidently did not go to waste. In the 1760s Brown was commissioned by Mr. Methuen to design the Picture Gallery at Corsham Court, Wiltshire, the ceiling of which matches the drawing submitted for Burton Constable.

**Address**

Burton Constable Hall, Skirlaugh, East Yorkshire, HU11 4LN

NHLE Registered Park & Garden entry number

1000921

NHLE Listed Building entry number for building in drawing

1083444

Subject of drawing

Chimney piece, Burton Constable Hall

Existence of drawing: Yes/unclear

Yes

Date

1760

Provenance of Brown or his office: Definite/attributed/unknown

Definite

Current owner of drawing (if known)

The Burton Constable Foundation

Original client (if possible)

William Constable

Current location (if known)

Burton Constable

Archive/collection/catalogue number

LDS 1570

Reproduction

Lynch, pp.38-39; Stroud, pl.50b

Notes

Archival information kindly provided by Burton Constable curator, Philippa Wood. Information in Burton Constable Hall catalogue: Design for a chimneypiece; 35.8 x 52.3 cm.

Burton Constable*Drawing 6 of 6***Address**

Burton Constable Hall, Skirlaugh, East Yorkshire, HU11 4LN

NHLE Registered Park & Garden entry number

1000921

NHLE Listed Building entry number for building in drawing

1083444

Subject of drawing

The Great Hall, Burton Constable Hall

Existence of drawing: Yes/unclear

Yes

Date

1760

Provenance of Brown or his office: Definite/attributed/unknown

Definite

Current owner of drawing (if known)

The Burton Constable Foundation

Original client (if possible)

William Constable

Current location (if known)

Burton Constable

Archive/collection/catalogue number

LDS 1615

Reproduction

Lynch, pp.38-39; Stroud, pl.50b

Notes

Archival information kindly provided by Burton Constable curator, Philippa Wood. Information in Burton Constable Hall catalogue: Design for a room with three sections (marked 37) Great Hall; 46.5 x 37 cm.

Cadland*Drawing 1 of 2***Address**

Cadland, Fawley, Hampshire, SO45 1AA

NHLE Registered Park & Garden entry number

1000280

NHLE Listed Building entry number for building in drawing**Subject of drawing**

Design drawings for altering Cadland House

Existence of drawing: Yes/unclear

Yes

Date

1775

Provenance of Brown or his office: Definite/attributed/unknown

Definite

Current owner of drawing (if known)

Private collection

Original client (if possible)

Robert Drummond

Current location (if known)

Private collection

Archive/collection/catalogue number**Reproduction****Notes**

In a leather embossed folio similar to those for Belvoir and Fenstanton in which is contained the plan for the pleasure ground of Boarn Hill Cottage.

Cadland*Drawing 2 of 2***Address**

Cadland, Fawley, Hampshire, SO45 1AA

NHLE Registered Park & Garden entry number

1000280

NHLE Listed Building entry number for building in drawing**Subject of drawing**

Sketches for altering Cadland House

Existence of drawing: Yes/unclear

Yes

Date

1775

Provenance of Brown or his office: Definite/attributed/unknown

Definite

Current owner of drawing (if known)

Sir John Soane's Museum

Original client (if possible)

Robert Drummond

Current location (if known)

Sir John Soane's Museum

Archive/collection/catalogue number

Sir John Soane's Museum volume 38

ReproductionStroud, *Henry Holland*, 1966, pp.22-3, 39-40**Notes**

In sketchbook, 'Miscellaneous Sketches 1777', largely by Henry Holland including various commissions he undertook with Brown. The entries are almost all in the hand of Henry Holland who set up his office c.1770. John Soane became his assistant in 1772 and stayed until 1778. Of the drawings in the sketchbook it seems that 'although Soane added a few of his own drawings later, most are in Holland's hand' (D. Stroud, *Henry Holland*, 1966, p.39). Drawings attributed to Soane are on pp.44-9; when not stated, it is assumed that they are in Holland's hand. The drawings were swiftly done and made without a straight edge (except where noted) or compass (except p.37), that is, 'roughly' drawn. Apart from a few preliminary survey drawings of rooms (pp.32-4) and designs for lodge houses (pp.12-13) and garden temples (pp.38, 48, 49), most are ideas for the finishings of rooms such as chimneypieces, architraves, cornices and friezes.

**Address**

Claremont Fan Court School, Claremont Drive, Esher, Surrey, KT10 9LY

NHLE Registered Park & Garden entry number

1000324

NHLE Listed Building entry number for building in drawing

1030202

Subject of drawing

Designs for Claremont House, Esher, Surrey, for Robert Clive ('Clive of India'), 3 plans; numerous exterior and interior drawings. As part of this the drawings include three plans and four exterior elevations:
 Entrance elevation RIBA Image reference RIBA35746; catalogue reference VOS/120 f.41
 Side elevation Image reference RIBA RIBA35747; catalogue reference VOS/120 f.42
 Rear elevation RIBA Image reference RIBA35748; catalogue reference VOS/120 f.43
 Rear elevation, alternative design; catalogue reference VOS/120
 Plan No. 1 Basement story; catalogue reference VOS/120
 Plan No. 2 Principal story; catalogue reference VOS/120
 Plan No. 3 Bedchamber story; catalogue reference VOS/120

Existence of drawing: Yes/unclear

Yes

Date

1771

Provenance of Brown or his office: Definite/attributed/unknown

Definite

Current owner of drawing (if known)

Royal Institute of British Architects

Original client (if possible)

1st Baron Clive

Current location (if known)

Victoria and Albert Museum, Royal Institute of British Architects collection

Archive/collection/catalogue number


VOS/120 f.41-43

Reproduction

Stroud, pls. 42a & 42b; Rutherford, pp.145, 146

Notes

This is very rare, possibly unique, surviving album of presentation and design drawings for a single country house by Brown. This was the first major commission in which he was assisted by his son-in-law, Henry Holland.

Claremont		<i>Drawing 2 of 2</i>	
Address			
Claremont Fan Court School, Claremont Drive, Esher, Surrey, KT10 9LY			
NHLE Registered Park & Garden entry number		NHLE Listed Building entry number for building in drawing	
1000324		1030202	
Subject of drawing			
House, part elevation of north front			
Existence of drawing: Yes/unclear			
Yes			
Date			
n.d., c.1771			
Provenance of Brown or his office: Definite/attributed/unknown			
Definite (probably Henry Holland)			
Current owner of drawing (if known)			
Sir John Soane's Museum			
Original client (if possible)			
1st Baron Clive			
Current location (if known)			
Sir John Soane's Museum			
Archive/collection/catalogue number			
Sir John Soane's Museum 57/8/22			
Reproduction			
Notes			
Preliminary design for part of north front; details of the perron and pediment differ from the buildings as executed; probably hand of Henry Holland who was working for Brown on Claremont; part of suite of drawings in Brown's name in Album at RIBA.			



Address

Compton Verney, Warwickshire, CV35 9HZ

NHLE Registered Park & Garden entry number

1000369

NHLE Listed Building entry number for building in drawing

1381872

Subject of drawing

Bridge across Compton Pool, five arches, plan in landscape setting

Existence of drawing: Yes/unclear

Yes

Date

n.d., 1770s

Provenance of Brown or his office: Definite/attributed/unknown

Attributed

Current owner of drawing (if known)

Shakespeare Birthplace Trust

Original client (if possible)

14th Baron Willoughby de Broke

Current location (if known)

Shakespeare Birthplace Trust

Archive/collection/catalogue number

DR98/1747/1 Miscellaneous plans: Bridge at Compton Verney

Reproduction

Notes

Listed Building description notes the bridge could be by Brown or Robert Adam, but stylistically the hand on the drawing appears to be out of Brown's office.

**Address**

Compton Verney, Warwickshire, CV35 9HZ

NHLE Registered Park & Garden entry number

1000369

NHLE Listed Building entry number for building in drawing

1381872

Subject of drawing

Bridge, five arches, across Compton Pool, elevation in landscape setting

Existence of drawing: Yes/unclear

Yes

Date

n.d., 1770s

Provenance of Brown or his office: Definite/attributed/unknown

Attributed

Current owner of drawing (if known)

Shakespeare Birthplace Trust

Original client (if possible)

14th Baron Willoughby de Broke

Current location (if known)

Shakespeare Birthplace Trust

Archive/collection/catalogue number

DR98/1747/2 Miscellaneous plans: Bridge at Compton Verney

Reproduction**Notes**

Listed Building description notes the bridge could be by Brown or Robert Adam, but stylistically the drawing appears to be out of Brown's office.

Dinefwr/Newton House*Drawing 1 of 2***Address**

Plas Dinefwr/ Newton House, Llandeilo, Carmarthenshire, SA19 6RT

NHLE Registered Park & Garden entry number

Welsh Register (Cadw): PGW (Dy) 12 (CAM)

NHLE Listed Building entry number for building in drawing**Subject of drawing**

Gateway, plan

Existence of drawing: Yes/unclear

Yes

Date

1776

Provenance of Brown or his office: Definite/attributed/unknown

Definite

Current owner of drawing (if known)

Believed to be National Library of Wales

Original client (if possible)

George Rice

Current location (if known)

Believed to be National Library of Wales

Archive/collection/catalogue number**Reproduction****Notes**

Dinefwr/Newton House*Drawing 2 of 2***Address**

Plas Dinefwr/ Newton House, Llandeilo, Carmarthenshire, SA19 6RT

NHLE Registered Park & Garden entry number

Welsh Register (Cadw): PGW (Dy) 12 (CAM)

NHLE Listed Building entry number for building in drawing**Subject of drawing**

Gateway, elevation in landscape setting

Existence of drawing: Yes/unclear

Yes

Date

1776

Provenance of Brown or his office: Definite/attributed/unknown

Definite

Current owner of drawing (if known)

Believed to be National Library of Wales

Original client (if possible)

George Rice

Current location (if known)

Believed to be National Library of Wales

Archive/collection/catalogue number**Reproduction****Notes**

The National Trust has designed a self guided walk around Dinefwr's park, based upon one originally created by Brown. A record of 'Mr Brown's Directions', dated May 1776, was rediscovered in Lord Dynevor's archive in recent years Copy of letter re: Mr Rice's intentions and Mr Brown's directions (c.1776) NLW Dyn C1.

Fenstanton Manor*Drawing 1 of 2***Address**

Church Lane, Fenstanton, Cambridgeshire, PE28 9JS

NHLE Registered Park & Garden entry number

n/a

NHLE Listed Building entry number for building in drawing**Subject of drawing**

Landscape capriccio on design plan with title fictively carved on block 'A Plan of the manor of Fenstanton ...!'

Existence of drawing: Yes/unclear

Yes

Date

1777

Provenance of Brown or his office: Definite/attributed/unknown

Definite (Spyers)

Current owner of drawing (if known)

University Library, Cambridge

Original client (if possible)

Lancelot Brown

Current location (if known)

University Library, Cambridge

Archive/collection/catalogue number

Maps.Ms.Plans.x.1

Reproduction

Stroud, pl.18a

Notes

In leather embossed folio survey book for Fenstanton.

Fenstanton Manor (Hilton) *Drawing 2 of 2*



Address	
Church Lane, Fenstanton, Cambridgeshire, PE28 9JS	
NHLE Registered Park & Garden entry number	NHLE Listed Building entry number for building in drawing
n/a	
Subject of drawing	
Landscape capriccio on design plan with title fictively carved on block: 'A Survey of Hilton Parish in the manor of Fenstanton'	
Existence of drawing: Yes/unclear	
Yes	
Date	
1777	
Provenance of Brown or his office: Definite/attributed/unknown	
Definite	
Current owner of drawing (if known)	
University Library, Cambridge	
Original client (if possible)	
Lancelot Brown	
Current location (if known)	
University Library, Cambridge	
Archive/collection/catalogue number	
Maps.Ms.Plans.x.1.(1)	
Reproduction	
Spyers, p.24	
Notes	
In leather embossed folio survey book for Fenstanton.	

Fisherwick



Address

Fisherwick Wood Lane, Fisherwick Wood, Lichfield, Staffordshire, WS13 8QQ

NHLE Registered Park & Garden entry number

n/a

NHLE Listed Building entry number for building in drawing

Subject of drawing

House, principal elevation

Existence of drawing: Yes/unclear

Yes

Date

n.d., c.1768

Provenance of Brown or his office: Definite/attributed/unknown

Attributed

Current owner of drawing (if known)

Believed to be Staffordshire County Record Office

Original client (if possible)

5th Earl of Donegal

Current location (if known)

Believed to be Staffordshire County Record Office

Archive/collection/catalogue number

Reproduction

Stroud, pl.47a

Notes

Unclear if this is a ms. drawing from Brown's office. In 1808 sale catalogue.

Grimsthorpe Castle



Address

Grimsthorpe Castle, Bourne, Lincolnshire, E10 0NB

NHLE Registered Park & Garden entry number

1000978

NHLE Listed Building entry number for building in drawing

Subject of drawing

Sham bridge, perspective in landscape setting

Existence of drawing: Yes/unclear

Yes

Date

1771

Provenance of Brown or his office: Definite/attributed/unknown

Attributed

Current owner of drawing (if known)

Grimsthorpe & Drummond Castle Trust

Original client (if possible)

3rd Duke of Ancaster

Current location (if known)

Lincolnshire Archives

Archive/collection/catalogue number

Reproduction

Stroud, pl.51a; Shields, p.195; Phibbs, p.61

Notes

The Hoo



Address

The Hoo, Kimpton, Hertfordshire, SG4 8EE

NHLE Registered Park & Garden entry number

1000912

NHLE Listed Building entry number for building in drawing

Subject of drawing

Bridge, elevation in landscape setting, bridge showing two alternative designs

Existence of drawing: Yes/unclear

Yes

Date

n.d., c.1762

Provenance of Brown or his office: Definite/attributed/unknown

Definite

Current owner of drawing (if known)

Royal Institute of British Architects

Original client (if possible)

Thomas Brand

Current location (if known)

Victoria and Albert Museum, Royal Institute of British Architects collection

Archive/collection/catalogue number

SD15/10

Reproduction

Stroud, pl.34a

Notes

Two halves of the bridge are shown in differing classical styles, unexecuted; current bridge by Chambers.

Luton Hoo



Address

Luton, Bedfordshire, LU1 3TQ

NHLE Registered Park & Garden entry number

1000578

NHLE Listed Building entry number for building in drawing

Subject of drawing

Glasshouse range with belvedere to rear centre, plan, perspective and elevations

Existence of drawing: Yes/unclear

Yes

Date

n.d.

Provenance of Brown or his office: Definite/attributed/unknown

Tentatively attributed

Current owner of drawing (if known)

The Bute Archive, Mount Stuart

Original client (if possible)

3rd Earl of Bute

Current location (if known)

The Bute Archive, Mount Stuart

Archive/collection/catalogue number

Reproduction

Shields, p.211

Notes

The belvedere is similar to those surviving at Wallington, Northumberland and Talacre, Wales. Possibly hand of William Ireland.

Milton Abbey



Address

Milton Abbey School, Blandford Forum, Dorset, DT11 0BZ

NHLE Registered Park & Garden entry number

1000721

NHLE Listed Building entry number for building in drawing

1118569

Subject of drawing

Gothic ruin, two elevations

Existence of drawing: Yes/unclear

Yes

Date

n.d.

Provenance of Brown or his office: Definite/attributed/unknown

Definite

Current owner of drawing (if known)

Royal Institute of British Architects

Original client (if possible)

1st Baron Milton

Current location (if known)

Victoria and Albert Museum, Royal Institute of British Architects collection

Archive/collection/catalogue number

RIBA Catalogue no. SD41/18

Reproduction

Jonathan Holt, *Discover Dorset - Follies* (Dovecote Press, 2000), p.56.

Notes

RIBAPIX ref. 37273. Two elevations on one sheet labelled C & D, drawings for A & B lost. Building is recognisable in Milton Abbey park.

Newnham Paddox	
Address	
Newnham Paddox, Rugby, Warwickshire CV23 0RX	
NHLE Registered Park & Garden entry number	NHLE Listed Building entry number for building in drawing
1001191	
Subject of drawing	
House, elevation	
Existence of drawing: Yes/unclear	
Yes	
Date	
n.d., 1745-48	
Provenance of Brown or his office: Definite/attributed/unknown	
Attributed	
Current owner of drawing (if known)	
Bodleian Library	
Original client (if possible)	
5th Earl of Denbigh	
Current location (if known)	
Bodleian Library, Oxford, copy in Warwickshire Record Office	
Archive/collection/catalogue number	
Bodleian Library, Gough Maps 28, f.28; Warwickshire Record Office acc no MI416 (copy), related material WRO CR 2017/A5	
Reproduction	
Stroud, pl.4b.	
Notes	
Stroud notes 'probably drawn by Brown'. House demolished. Warwickshire Record Office has records of building of house and laying out of grounds by Brown.	



Packington Hall*Drawing 1 of 4***Address**

Packington Hall, Meriden, Warwickshire CV7 7HF

NHLE Registered Park & Garden entry number

1001193

NHLE Listed Building entry number for building in drawing**Subject of drawing**

Gateway, miniature elevation on design plan 'A plan of the disposition of the grounds at Packington Hall'

Existence of drawing: Yes/unclear

Yes

Date

1751

Provenance of Brown or his office: Definite/attributed/unknown

Definite

Current owner of drawing (if known)

Private collection

Original client (if possible)

Lord Guernsey, later 3rd Earl of Aylesford

Current location (if known)

Private collection, copy in Warwickshire Record Office

Archive/collection/catalogue number

Copy at Warwickshire Record Office ?Z0143/1(L)

Reproduction

Stroud, pl.6b

Notes

This is one of four designs on this early design plan signed by Brown, including also for a bridge, My Lady's Lodge and a cascade. These feature as vignettes on the same sheet which is very unusual, and possibly unique.

Packington Hall

Drawing 2 of 4

**Address**

Packington Hall, Meriden, Warwickshire CV7 7HF

NHLE Registered Park & Garden entry number

1001193

NHLE Listed Building entry number for building in drawing**Subject of drawing**

My Lady's Lodge, miniature elevation on design plan
 'A plan of the disposition of the grounds at Packington Hall'

Existence of drawing: Yes/unclear

Yes

Date

1751

Provenance of Brown or his office: Definite/attribution/unknown

Definite

Current owner of drawing (if known)

Private collection

Original client (if possible)

Lord Guernsey, later 3rd Earl of Aylesford

Current location (if known)

Private collection, copy in Warwickshire Record Office

Archive/collection/catalogue number

Copy at Warwickshire Record Office Z0143/1(L)

Reproduction

Shields, p.50; Stroud, pl.6a

Notes

This is one of four designs on this early design plan signed by Brown, including also for a bridge, gateway and cascade. These feature as vignettes around the plan, all on the same sheet which is very unusual, and possibly unique.

Packington Hall

Drawing 3 of 4



Address

Packington Hall, Meriden, Warwickshire CV7 7HF

NHLE Registered Park & Garden entry number

1001193

NHLE Listed Building entry number for building in drawing

Subject of drawing

Cascade, miniature perspective on design plan 'A plan of the disposition of the grounds at Packington Hall'

Existence of drawing: Yes/unclear

Yes

Date

1751

Provenance of Brown or his office: Definite/attributed/unknown

Definite

Current owner of drawing (if known)

Private collection

Original client (if possible)

Lord Guernsey, later 3rd Earl of Aylesford

Current location (if known)

Private collection, copy in Warwickshire Record Office

Archive/collection/catalogue number

Copy at Warwickshire Record Office Z0143/1(L)

Reproduction

Shields, p.50

Notes

This is one of four designs on this early design plan signed by Brown, including also for a bridge, My Lady's Lodge and a gateway. These feature as vignettes around the plan, all on the same sheet which is very unusual, and possibly unique.

Packington Hall

Drawing 4 of 4



Address

Packington Hall, Meriden, Warwickshire CV7 7HF

NHLE Registered Park & Garden entry number

1001193

NHLE Listed Building entry number for building in drawing

Subject of drawing

Three arch stone bridge, miniature elevation on design plan '
A plan of the disposition of the grounds at Packington Hall'

Existence of drawing: Yes/unclear

Yes

Date

1751

Provenance of Brown or his office: Definite/attributed/unknown

Definite

Current owner of drawing (if known)

Private collection

Original client (if possible)

Lord Guernsey, later 3rd Earl of Aylesford

Current location (if known)

Private collection, copy

Archive/collection/catalogue number

Copy in Warwickshire Record Office Z0143/1(L)

Reproduction

Notes

This is one of four designs on this early design plan signed by Brown, including also for a cascade, My Lady's Lodge and a gateway. These feature as vignettes around the plan, all on the same sheet which is very unusual, and possibly unique.

**Address**

Peper Harow, Godalming, Surrey, GU8 6BG

NHLE Registered Park & Garden entry number

1435898

NHLE Listed Building entry number for building in drawing

1044443

Subject of drawing

House, elevation, crenellated

Existence of drawing: Yes/unclear

Yes

Date

1752

Provenance of Brown or his office: Definite/attributed/unknown

Definite

Current owner of drawing (if known)

Surrey History Centre

Original client (if possible)

3rd Viscount Midleton

Current location (if known)

Surrey History Centre

Archive/collection/catalogue number

G145/91/8

Reproduction

Shields, p.159

Notes

A discussion of the Peper Harow drawings and their provenance is at www.surreyarchives.org.uk/CalmView/Record.aspx?src=CalmView.Catalog&id=1567&pos=1 (accessed 24 June 2019)

Peper Harow*Drawing 2 of 5***Address**

Peper Harow, Godalming, Surrey, GU8 6BG

NHLE Registered Park & Garden entry number

1435898

NHLE Listed Building entry number for building in drawing

1044443

Subject of drawing

House, another elevation, crenellated

Existence of drawing: Yes/unclear

Yes

Date

1752

Provenance of Brown or his office: Definite/attributed/unknown

Definite

Current owner of drawing (if known)

Surrey History Centre

Original client (if possible)

3rd Viscount Midleton

Current location (if known)

Surrey History Centre

Archive/collection/catalogue number

G145/91/8

Reproduction

Shields, p.159

Notes

A discussion of the Peper Harow drawings and their provenance is at www.surreyarchives.org.uk/CalmView/Record.aspx?src=CalmView.Catalog&id=1567&pos=1 (accessed 24 June 2019)

**Address**

Peper Harow, Godalming, Surrey, GU8 6BG

NHLE Registered Park & Garden entry number

1435898

NHLE Listed Building entry number for building in drawing

1044443

Subject of drawing

House, elevation, south-west front, classical style

Existence of drawing: Yes/unclear

Yes

Date

1752

Provenance of Brown or his office: Definite/attributed/unknown

Attributed

Current owner of drawing (if known)

Surrey History Centre

Original client (if possible)

3rd Viscount Midleton

Current location (if known)


Surrey History Centre

Archive/collection/catalogue number

1567/3

Reproduction**Notes**

A discussion of the Peper Harow drawings and their provenance is at www.surreyarchives.org.uk/CalmView/Record.aspx?src=CalmView.Catalog&id=1567&pos=1 (accessed 24 June 2019)

Peper Harow		<i>Drawing 4 of 5</i>	
Address			
Peper Harow, Godalming, Surrey, GU8 6BG			
NHLE Registered Park & Garden entry number		NHLE Listed Building entry number for building in drawing	
1435898		1044443	
Subject of drawing			
House and offices, ground or semi-basement plan			
Existence of drawing: Yes/unclear			
Yes			
Date			
n.d., c.1752			
Provenance of Brown or his office: Definite/attributed/unknown			
Attributed			
Current owner of drawing (if known)			
Surrey History Centre			
Original client (if possible)			
3rd Viscount Middleton			
Current location (if known)			
Surrey History Centre			
Archive/collection/catalogue number			
1567/1			
Reproduction			
Shields, p.159			
Notes			
A discussion of the Peper Harow drawings and their provenance is at: //www.surreyarchives.org.uk/CalmView/Record.aspx?src=CalmView.Catalog&id=1567&pos=1 (accessed 24 June 2019)			

**Address**

Peper Harow, Godalming, Surrey, GU8 6BG

NHLE Registered Park & Garden entry number

1435898

NHLE Listed Building entry number for building in drawing

1044443

Subject of drawing

House and offices, plan of the first floor

Existence of drawing: Yes/unclear

Yes

Date

n.d., c.1752

Provenance of Brown or his office: Definite/attributed/unknown

Attributed

Current owner of drawing (if known)

Surrey History Centre

Original client (if possible)

3rd Viscount Midleton

Current location (if known)

Surrey History Centre

Archive/collection/catalogue number

1567/2

Reproduction**Notes**

A discussion of the Peper Harow drawings and their provenance is at www.surreyarchives.org.uk/CalmView/Record.aspx?src=CalmView.Catalog&id=1567&pos=1 (accessed 24 June 2019)

Petworth



Address

Petworth House, West Sussex, GU28 0AE

NHLE Registered Park & Garden entry number

1000162

NHLE Listed Building entry number for building in drawing

Subject of drawing

Dam, cross section, construction sketch

Existence of drawing: Yes/unclear

Yes

Date

n.d., c.1755

Provenance of Brown or his office: Definite/attributed/unknown

Definite

Current owner of drawing (if known)

Lord Egremont

Original client (if possible)

2nd Earl of Egremont

Current location (if known)

West Sussex Record Office

Archive/collection/catalogue number

PHA collection

Reproduction

Shields, p.71

Notes

Unsigned drawing on reverse of undated estimate in same script as Brown's signed contracts.

Rothley Lakes

Drawing 1 of 4



Address

Morpeth, Northumberland, NE61 4JY

NHLE Registered Park & Garden entry number

n/a

NHLE Listed Building entry number for building in drawing

Subject of drawing

Banqueting house, front elevation with plan, to stand above Rothley Lower Lake

Existence of drawing: Yes/unclear

Yes

Date

n.d., c.1760s

Provenance of Brown or his office: Definite/attributed/unknown

Definite

Current owner of drawing (if known)

National Trust

Original client (if possible)

Walter Calverley Blackett

Current location (if known)

Wallington House, Northumberland

Archive/collection/catalogue number

NT 582325.2

Reproduction

Stroud, pl.32a; *Garden History* 9:2 1981, p.169; Rutherford, p.154; Jackson-Stops, p.84

Notes

Brown's suite of drawings, including two design plans, for Rothley Lower Lake relates to a detached pleasure ground owned by Sir Walter Claverley Blackett lying several miles distant from his country house at Wallington Hall. None of the structures was executed. www.nationaltrustcollections.org.uk/object/582325.2

Rothley Lakes

Drawing 2 of 4



Address

Morpeth, Northumberland, NE61 4JY

NHLE Registered Park & Garden entry number

n/a

NHLE Listed Building entry number for building in drawing

Subject of drawing

Banqueting house, side elevation with plan, to stand above Rothley Lower Lake

Existence of drawing: Yes/unclear

Yes

Date

n.d., c.1760s

Provenance of Brown or his office: Definite/attributed/unknown

Definite

Current owner of drawing (if known)

National Trust

Original client (if possible)

Walter Calverley Blackett

Current location (if known)

Wallington House, Northumberland

Archive/collection/catalogue number

NT 582325.1

Reproduction

Garden History 9:2 1981, p.168

Notes

Brown's suite of drawings, including two design plans, for Rothley Lower Lake relates to a detached pleasure ground owned by Sir Walter Claverley Blackett lying several miles distant from his country house at Wallington Hall. None of the structures was executed. www.nationaltrustcollections.org.uk/object/582325.1

**Address**

Morpeth, Northumberland, NE61 4JY

NHLE Registered Park & Garden entry number

n/a

NHLE Listed Building entry number for building in drawing**Subject of drawing**

Sham bridge, perspective sketch, Rothley Lower Lake

Existence of drawing: Yes/unclear

Yes

Date

n.d., c.1760s

Provenance of Brown or his office: Definite/attributed/unknown

Definite

Current owner of drawing (if known)

National Trust

Original client (if possible)

Walter Calverley Blakett

Current location (if known)

Wallington House, Northumberland

Archive/collection/catalogue number

NT 582324

ReproductionStroud, pl.33b; *Garden History* 9:2 1981, p.171; Rutherford, p.152**Notes**

Brown's suite of drawings, including two design plans, for Rothley Lower Lake relates to a detached pleasure ground owned by Sir Walter Claverley Blakett lying several miles distant from his country house at Wallington Hall. None of the structures was executed. www.nationaltrustcollections.org.uk/object/582324

Rothley Lakes

Drawing 4 of 4



Address

Morpeth, Northumberland, NE61 4JY

NHLE Registered Park & Garden entry number

n/a

NHLE Listed Building entry number for building in drawing

Subject of drawing

Round Tower, two alternative designs on one sheet, elevations with plans, to stand above Rothley Lower Lake

Existence of drawing: Yes/unclear

Yes

Date

n.d., c.1760s

Provenance of Brown or his office: Definite/attributed/unknown

Definite

Current owner of drawing (if known)

National Trust

Original client (if possible)

Walter Calverley Blackett

Current location (if known)

Wallington House, Northumberland

Archive/collection/catalogue number

NT 582489

Reproduction

Notes

Brown's suite of drawings, including two design plans, for Rothley Lower Lake relates to a detached pleasure ground owned by Sir Walter Claverley Blackett lying several miles distant from his country house at Wallington Hall. None of the structures was executed. www.nationaltrustcollections.org.uk/object/582489

Slane Castle*Drawing 1 of 2***Address**

Slane Castle, Co. Meath, Republic of Ireland

NHLE Registered Park & Garden entry number

ME-43-N-950743 (Irish National Inventory of Architectural Heritage)

NHLE Listed Building entry number for building in drawing**Subject of drawing**

Stables, elevation

Existence of drawing: Yes/unclear

Yes

Date

n.d., c.1781-83

Provenance of Brown or his office: Definite/attributed/unknown

Attributed

Current owner of drawing (if known)

Irish Architectural Archive, Murray Collection

Original client (if possible)

1st Viscount Conyngham

Current location (if known)


Irish Architectural Archive, Murray Collection

Archive/collection/catalogue number

92/46.1132

Reproduction**Notes**

Attributed by Stroud (3rd edn, 1975, p.246); Stroud also suggests that the landscape of Slane was perhaps to a design by Brown although he never visited Ireland.

Slane Castle		<i>Drawing 2 of 2</i>	
Address			
Slane Castle, Co. Meath, Republic of Ireland			
NHLE Registered Park & Garden entry number		NHLE Listed Building entry number for building in drawing	
ME-43-N-950743 (Irish National Inventory of Architectural Heritage)			
Subject of drawing			
House (Castle), collection of designs for alterations			
Existence of drawing: Yes/unclear			
Yes			
Date			
n.d., c.1781-83			
Provenance of Brown or his office: Definite/attributed/unknown			
Attributed			
Current owner of drawing (if known)			
Irish Architectural Archive, Murray Collection			
Original client (if possible)			
1st Viscount Conyngham			
Current location (if known)			
Irish Architectural Archive, Murray Collection			
Archive/collection/catalogue number			
92/46.1091-1094			
Reproduction			
Notes			
Attributed by Stroud (3rd edn, 1975, p.246); Stroud also suggests that the landscape of Slane was perhaps to a design by Brown although he never visited Ireland.			

St James's Park



Address

St James's Park Office, The Storeyard, Horse Guards Road, London, SW1A 2BJ

NHLE Registered Park & Garden entry number

1000483

NHLE Listed Building entry number for building in drawing

Subject of drawing

Landscape capriccio on design plan with title fictively carved on scroll: 'A Plan with the Alterations Proposed for St James's Park', resting on books with measuring rod and ruler

Existence of drawing: Yes/unclear

Yes

Date

n.d., 1770-71

Provenance of Brown or his office: Definite/attributed/unknown

Definite

Current owner of drawing (if known)

Unknown

Original client (if possible)

King George III

Current location (if known)


Unknown

Archive/collection/catalogue number

Reproduction

Stroud, pl.54a

Notes

Stowe		
Address		
Stowe School, Stowe, Buckinghamshire, MK18 5EH		
NHLE Registered Park & Garden entry number	NHLE Listed Building entry number for building in drawing	
1000198	1289758	
Subject of drawing		
Garden building, elevation, pencil sketch endorsed: 'The upright of Gibbs Building'		
Existence of drawing: Yes/unclear		
Yes		
Date		
n.d., c.1743-49		
Provenance of Brown or his office: Definite/attributed/unknown		
Attributed		
Current owner of drawing (if known)		
The Huntington Library, San Marino, California		
Original client (if possible)		
If by Brown, drawn while employed by Lord Cobham in the 1740s		
Current location (if known)		
The Huntington Library, San Marino, California		
Archive/collection/catalogue number		
ST Maps & Plans Box 9 (Peter Willis List)		
Reproduction		
Notes		
<p>This drawing of an existing building is probably the earliest surviving architectural drawing by Brown. Stroud (3rd edn, 1975, pp.51-52) notes that the title is written in Brown's hand and that although this not conclusive evidence that the elevation itself was drawn by him, it is probably a copy made by him, perhaps at the time of some proposed alteration previous to those for which Giambattista Borra scribbled notes in French on the drawing c.1753. When Brown was at Stowe the building by Gibbs stood in the western gardens. It was later moved to its present position in the Grecian Valley in 1764, 13 years after Brown left, and was renamed the Fane of Pastoral Poetry.</p>		

Syon Park*Drawing 1 of 4***Address**

Syon Park, Brentford, London, TW8 8JF

NHLE Registered Park & Garden entry number

1000148

NHLE Listed Building entry number for building in drawing**Subject of drawing**

Bridge, stone, single arch, perspective

Existence of drawing: Yes/unclear

Yes

Date

n.d.

Provenance of Brown or his office: Definite/attributed/unknown

Definite

Current owner of drawing (if known)

Private collection

Original client (if possible)

Duke of Northumberland

Current location (if known)

Private collection

Archive/collection/catalogue number**Reproduction***Lenses on a Landscape Genius*, The London Building Centre, exhibition catalogue, 2016, p.29**Notes**

Syon Park*Drawing 2 of 4***Address**

Syon Park, Brentford, London, TW8 8JF

NHLE Registered Park & Garden entry number

1000148

NHLE Listed Building entry number for building in drawing**Subject of drawing**

Bridge, stone, single arch, plan

Existence of drawing: Yes/unclear

Yes

Date

n.d.

Provenance of Brown or his office: Definite/attributed/unknown

Attributed

Current owner of drawing (if known)

Private collection

Original client (if possible)

Duke of Northumberland

Current location (if known)

Private collection

Archive/collection/catalogue number**Reproduction****Notes**

Unsigned but, as some other Brown plans, with a note likely in Brown's hand "As the arches are to be made of Brick, whether it will be better to have them all open, Then will need no Stone for the side next to Isleworth but a Coping to the Parapet"

Syon Park*Drawing 3 of 4***Address**

Syon Park, Brentford, London, TW8 8JF

NHLE Registered Park & Garden entry number

1000148

NHLE Listed Building entry number for building in drawing**Subject of drawing**

Bridge, stone, three arch, perspective

Existence of drawing: Yes/unclear

Yes

Date

n.d.

Provenance of Brown or his office: Definite/attributed/unknown

Attributed

Current owner of drawing (if known)

Private collection

Original client (if possible)

Duke of Northumberland

Current location (if known)

Private collection

Archive/collection/catalogue number**Reproduction***Lenses on a Landscape Genius*, The London Building Centre, exhibition catalogue, 2016, p.29**Notes**

Syon Park*Drawing 4 of 4***Address**

Syon Park, Brentford, London, TW8 8JF

NHLE Registered Park & Garden entry number

1000148

NHLE Listed Building entry number for building in drawing**Subject of drawing**

Obelisk in landscape, sketch of landscape scene

Existence of drawing: Yes/unclear

Yes

Date

n.d.

Provenance of Brown or his office: Definite/attributed/unknown

Attributed

Current owner of drawing (if known)

Private collection

Original client (if possible)

Duke of Northumberland

Current location (if known)

Private collection

Archive/collection/catalogue number**Reproduction**Jane Brown, 2013, opposite p.256; *Lenses on a Landscape Genius*, The London Building Centre, exhibition catalogue, 2016, p.29**Notes**

Unsigned pencil sketch on paper endorsed in rough script which is likely Brown's "Obelisk from the Seat opposite the Front Door".

Tottenham Park/Savernake Forest*Drawing
1 of 2***Address**

Tottenham House, Marlborough, Wiltshire, SN8 3BE

NHLE Registered Park & Garden entry number

1000472

NHLE Listed Building entry number for building in drawing**Subject of drawing**

Sketch for the forest

Existence of drawing: Yes/unclear

Yes

Date

n.d.

Provenance of Brown or his office: Definite/attributed/unknown

Unknown

Current owner of drawing (if known)

Wiltshire Record Office

Original client (if possible)**Current location (if known)**


Wiltshire Record Office


Archive/collection/catalogue number

1300/1928

Reproduction**Notes**

“Sketch by Mr Hoare of what he understands to be Mr Brown’s ideas for improvements in the forest so as to make it one great whole”.

Tottenham Park/Savernake Forest		<i>Drawing 2 of 2</i>	
Address			
Tottenham House, Marlborough, Wiltshire, SN8 3BE			
NHLE Registered Park & Garden entry number		NHLE Listed Building entry number for building in drawing	
1000472			
Subject of drawing			
Sketch for the forest			
Existence of drawing: Yes/unclear			
Yes			
Date			
n.d.			
Provenance of Brown or his office: Definite/attributed/unknown			
Unknown			
Current owner of drawing (if known)			
Wiltshire Record Office			
Original client (if possible)			
Current location (if known)			
Wiltshire Record Office			
Archive/collection/catalogue number			
1300/1933			
Reproduction			
Notes			
Noted on back "A sketch or plan of the interior part of the Forest" "Mr Brown has a copy" in a different hand.			

Trentham		<i>Drawing 1 of 2</i>	
Address			
Trentham Estate, Stone Rd, Stoke-on-Trent, Staffordshire, ST4 8JG			
NHLE Registered Park & Garden entry number		NHLE Listed Building entry number for building in drawing	
1001168		1244070	
Subject of drawing			
Monument Lodges, elevation			
Existence of drawing: Yes/unclear			
Yes			
Date			
n.d., c.1767			
Provenance of Brown or his office: Definite/attributed/unknown			
Attributed			
Current owner of drawing (if known)			
Staffordshire Record Office			
Original client (if possible)			
2nd Earl Gower			
Current location (if known)			
Staffordshire Record Office			
Archive/collection/catalogue number			
D593/H/12/2/102			
Reproduction			
Notes			
<p>Sue Gregory, 'The Historic Gardens at Trentham Hall', <i>Staffordshire Archaeological and Historical Society Transactions</i> Vol. 44 (2010), pp.71-95. Footnote 56, p.81: 'Although badly damaged with no visible cartouche or signature the sketch is, from the writing, stylised trees and similarity with others, clearly Brown's 'Sue Gregory notes, 'His drawing for the lodges is identical to the elevation he produced in 1765 for ones at Blenheim Palace, Oxfordshire, although not executed there. The mason Robert Newman was contracted to build the lodges using stone brought from Sandon, and the estate ledger records that he received his first payment in July 1775, 'as architect under Mr Brown in building the lodges at the entrance into the Park from 'Tittensor' (SRO, D. 593/N/2/1/2/2, ledger. 1772-96).' The Listed Building attribution is to Joseph Pickford of Derby but Colvin disputes this; also the similarity with Brown's unexecuted plan for the Hensington Gateway at Blenheim is very strong. Brown's account book (Royal Horticultural Society) notes request for payment for Lodges in 1767. www.rhs.org.uk/education-learning/libraries-at-rhs/collections/library-online/capability-brown-account-book pg 32.</p>			

Trenttham*Drawing 2 of 2***Address**

Trenttham Estate, Stone Rd, Stoke-on-Trent, Staffordshire, ST4 8JG

NHLE Registered Park & Garden entry number

1001168

NHLE Listed Building entry number for building in drawing**Subject of drawing**

Rotunda, miniature elevation on design plan

Existence of drawing: Yes/unclear

Yes

Date

1759

Provenance of Brown or his office: Definite/attributed/unknown

Definite

Current owner of drawing (if known)

Staffordshire Record Office

Original client (if possible)

2nd Earl Gower

Current location (if known)

Staffordshire Record Office

Archive/collection/catalogue number

D593/H/13/1

Reproduction**Notes**

Rotunda near cascade outfall from lake.

Wallington*Drawing 1 of 3***Address**

Wallington Hall, Cambo, near Morpeth, Northumberland, NE61 4AR

NHLE Registered Park & Garden entry number

1000578

NHLE Listed Building entry number for building in drawing**Subject of drawing**

Plan for cottage, yards and menagerie

Existence of drawing: Yes/unclear

Yes

Date

n.d., c.1750

Provenance of Brown or his office: Definite/attributed/unknown

Unknown

Current owner of drawing (if known)

National Trust

Original client (if possible)

Sir Walter Calverley Blackett

Current location (if known)

Wallington House, Northumberland

Archive/collection/catalogue number

NT 582443

Reproduction**Notes**

A plan of the north part of Wallington's gardens near Bolt's Cottage which includes a 'menagery'. Bears similarities to Brown plans. There may be other architectural plans and elevations in the National Trust collection at Wallington that are by Brown. www.nationaltrustcollections.org.uk/object/582443

Wallington*Drawing 2 of 3***Address**

Wallington Hall, Cambo, near Morpeth, Northumberland, NE61 4AR

NHLE Registered Park & Garden entry number

1000578

NHLE Listed Building entry number for building in drawing**Subject of drawing**

Ground plans for two cottages on wider plan for kitchen garden

Existence of drawing: Yes/unclear

Yes

Date

n.d., c.1750

Provenance of Brown or his office: Definite/attributed/unknown

Unknown

Current owner of drawing (if known)

National Trust

Original client (if possible)

Sir Walter Calverley Blackett

Current location (if known)

Wallington House, Northumberland

Archive/collection/catalogue number

NT 582446

Reproduction**Notes**

Bears similarities to Brown plans. There may be other architectural plans and elevations in the National Trust collection at Wallington that are by Brown. www.nationaltrustcollections.org.uk/object/582446

Wallington*Drawing 3 of 3***Address**

Wallington Hall, Cambo, near Morpeth, Northumberland, NE61 4AR

NHLE Registered Park & Garden entry number

1000578

NHLE Listed Building entry number for building in drawing**Subject of drawing**

Ground plans for 2 cottages on wider plan for kitchen garden

Existence of drawing: Yes/unclear

Yes

Date

n.d., c.1750

Provenance of Brown or his office: Definite/attributed/unknown

Unknown

Current owner of drawing (if known)

National Trust

Original client (if possible)

Sir Walter Calverley Blackett

Current location (if known)

Wallington House, Northumberland

Archive/collection/catalogue number

NT 582447

Reproduction**Notes**

Bears similarities to Brown plans. There may be other architectural plans and elevations in the National Trust collection at Wallington that are by Brown. www.nationaltrustcollections.org.uk/object/582447

Woodchester Park*Drawing 1 of 2***Address**

Woodchester Mansion, Nympsfield, Stonehouse, Gloucestershire, GL10 3TS

NHLE Registered Park & Garden entry number

1000788

NHLE Listed Building entry number for building in drawing**Subject of drawing**

Landscape capriccio on design plan at left, with title fictively carved on block (see also following entry)

Existence of drawing: Yes/unclear

Yes

Date

1782

Provenance of Brown or his office: Definite/attributed/unknown

Definite (Spyers)

Current owner of drawing (if known)

Gloucestershire Archives

Original client (if possible)

Lord Ducie

Current location (if known)

Gloucestershire Archives

Archive/collection/catalogue number

D1011/P8

Reproductionwww.capabilitybrown.org/garden/woodchester-park**Notes**

Brown's account book shows that he visited September 1782. Surveyor Spyers spent 4 weeks at the estate preparing a survey, though his plan was not signed. Brown's total charge, including Spyers' expenses, was £20, 7 shillings, 6 pence.

www3.gloucestershire.gov.uk/CalmView/Record.aspx?src=CalmView.Catalog&id=D1011%2f3%2f5%2f1&pos=1

Woodchester Park*Drawing 2 of 2***Address**

Woodchester Mansion, Nympsfield, Stonehouse, Gloucestershire, GL10 3TS

NHLE Registered Park & Garden entry number

1000788

NHLE Listed Building entry number for building in drawing**Subject of drawing**

Landscape capriccio on design plan at bottom with title fictively carved on scroll (see also previous entry)

Existence of drawing: Yes/unclear

Yes

Date

1782

Provenance of Brown or his office: Definite/attributed/unknown

Definite (Spyers)

Current owner of drawing (if known)

Gloucestershire Archives

Original client (if possible)

Lord Ducie

Current location (if known)

Gloucestershire Archives

Archive/collection/catalogue number

D1011/P8

Reproductionwww.capabilitybrown.org/garden/woodchester-park**Notes**

Brown's account book shows that he visited September 1782. Surveyor Spyers spent 4 weeks at the estate preparing a survey, though his plan was not signed. Brown's total charge, including Spyers' expenses, was £20, 7 shillings, 6 pence.

www3.gloucestershire.gov.uk/CalmView/Record.aspx?src=CalmView.Catalog&id=D1011%2f3%2f5%2f1&pos=1

Unknown drawings at the The State Hermitage Museum, St Petersburg, Russia



A group of seven architectural elevations by John Spyers probably drawn while working for Brown. All are for unknown commissions. They are amongst the large number of watercolours, largely of Hampton Court, acquired from Spyers by Catherine the Great, Empress of Russia, in 1783.

Subjects of drawings

- (1) Bridge in a Park, single arch, perspective sketch in landscape setting
- (2) A Building in the Gothic Style [cottages], elevation
- (3) Pavilion in the Gothic Style, elevation
- (4) Park Gates, elevation in landscape setting
- (5) Park Gates, elevation in landscape setting
- (6) Park Wall, including a lodge and gate arch, elevation in landscape setting
- (7) Bridge in a Park, 3 arch, perspective in landscape setting

Date

n.d.

Provenance of Brown or his office: Definite/attributed/unknown

Definite (Spyers)

Current owner of drawings (if known)

The State Hermitage Museum, St Petersburg, Russia

Original client (if possible)

Unclear

Current location (if known)

The State Hermitage Museum, St Petersburg, Russia

Archive/collection/catalogue numbers

- (1) Album II, no. 7732
- (2) Album II, no. 7700
- (3) Album II, no. 7716
- (4) Album II, no. 7719
- (5) Album II, no. 7720
- (6) Album II, no. 7721
- (7) Album II, no. 7733

Reproductions

Spyers, J 2016 *The Hampton Court Albums of Catherine the Great*.

- (1) pp.28, 140
- (2) p.123
- (3) p.127
- (4) p.130
- (5) p.130
- (6) p.131
- (7) p.141

9 SITES WITH DRAWINGS, IN DATE ORDER

The following list is intended as a general guide to the chronological order of the drawings listed in the catalogue.

Please refer to the catalogue for specific information.

Sites for which drawings are included in this Catalogue (in date order)	
Date	Name (modern)
n.d., c.1743-49	Stowe
n.d., 1745-48	Newnham Paddox
1750	Burton Constable
n.d., ?1750s	Badminton
n.d., ?1750s	Badminton
n.d., c.1750	Wallington
n.d., c.1750	Wallington
n.d., c.1750	Wallington
1751	Packington Hall
1751	Packington Hall
1751	Packington Hall
1751	Packington Hall
1752	Peper Harow
1752	Peper Harow
1752	Peper Harow
n.d., c.1752	Peper Harow
n.d., c.1752	Peper Harow
n.d., c.1754	Beechwood
n.d., c.1755	Petworth
n.d., c.1755-60	Burghley
n.d., c.1755-60	Burghley
1756	Burghley
1759	Trentham
1760	Burton Constable
1760	Burton Constable
n.d., c.1760s	Rothley Lakes
n.d., c.1760s	Rothley Lakes
n.d., c.1760s	Rothley Lakes
n.d., c.1760s	Rothley Lakes

Sites for which drawings are included in this Catalogue (in date order)	
Date	Name (modern)
n.d., c.1762	The Hoo
1763	Blenheim Palace
1763	Blenheim Palace
1764	Blenheim Palace
n.d., c.1764	Blenheim Palace
1765	Blenheim Palace
n.d., mid-1760s	Blenheim Palace
n.d., mid-1760s	Blenheim Palace
n.d., mid-1760s	Blenheim Palace
n.d., mid-1760s	Blenheim Palace
n.d., mid-1760s	Blenheim Palace
1767	Ashburnham Place
1767	Ashburnham Place
1767	Ashburnham Place
1767	Ashburnham Place
1767	Ashburnham Place
1767	Ashburnham Place
n.d., c.1767	Trentham
n.d., late 1760s	Adderbury House
n.d., c.1767-71	Broadlands
n.d., c.1768	Fisherwick
n.d., 1770-71	St James's Park
n.d., 1770s	Compton Verney
n.d., 1770s	Compton Verney
1771	Claremont
1771	Grimsthorpe Castle
n.d., c.1771	Claremont
1772	Burton Constable
1775	Cadland
1775	Cadland
1776	Dinefwr/ Newton House
1776	Dinefwr/ Netown House
n.d., 1776-8	The Backs
1777	Fenstanton Manor
1777	Fenstanton Manor (Hilton)
May 1778	Burton Constable

Sites for which drawings are included in this Catalogue (in date order)	
Date	Name (modern)
n.d., c.1778	Burton Constable
1779	Belvoir Castle
1780	Belvoir Castle
1780	Belvoir Castle
1780	Belvoir Castle
1780	Belvoir Castle
1780	Belvoir Castle
n.d., c.1781-83	Slane Castle
n.d., c.1781-83	Slane Castle
1782	Woodchester Park
1782	Woodchester Park
n.d.	Burghley
n.d.	Burghley
n.d.	Burghley
n.d.	Burghley
n.d.	Burghley
n.d.	Luton Hoo
n.d.	Milton Abbey
n.d.	Syon Park
n.d.	Syon Park
n.d.	Syon Park
n.d.	Syon Park
n.d.	Tottenham Park /Savernake Forest
n.d.	Tottenham Park /Savernake Forest
n.d.	Unknown (Spyers design)
n.d.	Unknown (Spyers design)
n.d.	Unknown (Spyers design)
n.d.	Unknown (Spyers design)
n.d.	Unknown (Spyers design)
n.d.	Unknown (Spyers design)
n.d.	Unknown (Spyers design)

10 LISTED BUILDINGS IN THE CATALOGUE

The following lists 13 sites in which a total of 17 listed buildings appear in the catalogue.

Site	Building	NHLE number
Badminton	House	1320832
Beechwood	Icehouse	1348458
Belvoir Castle	House	1360870
Blenheim Palace	High Lodge	1052918
Blenheim Palace	Park Farm Granary	1052877
Broadlands	House	141166
Burghley	House	1127501
Burghley	Stables	1127502
Burton Constable	House	1083444
Burton Constable	Stables and offices	1366245
Burton Constable	Sham bridge	1083448
Claremont	House	1030202
Compton Verney	Bridge	1381872
Milton Abbey	Gothic ruin	1118569
Peper Harow	House	1044443
Stowe	'The Gibbs Building' (since moved and renamed the Fane of Pastoral Poetry)	1289758
Trentham	Monument Lodges	1244070



Historic England Research and the Historic Environment

We are the public body that helps people care for, enjoy and celebrate England's spectacular historic environment.

A good understanding of the historic environment is fundamental to ensuring people appreciate and enjoy their heritage and provides the essential first step towards its effective protection.

Historic England works to improve care, understanding and public enjoyment of the historic environment. We undertake and sponsor authoritative research. We develop new approaches to interpreting and protecting heritage and provide high quality expert advice and training.

We make the results of our work available through the Historic England Research Report Series, and through journal publications and monographs. Our online magazine Historic England Research which appears twice a year, aims to keep our partners within and outside Historic England up-to-date with our projects and activities.

A full list of Research Reports, with abstracts and information on how to obtain copies, may be found on www.HistoricEngland.org.uk/researchreports

Some of these reports are interim reports, making the results of specialist investigations available in advance of full publication. They are not usually subject to external refereeing, and their conclusions may sometimes have to be modified in the light of information not available at the time of the investigation.

Where no final project report is available, you should consult the author before citing these reports in any publication. Opinions expressed in these reports are those of the author(s) and are not necessarily those of Historic England.

The Research Report Series incorporates reports by the expert teams within Historic England. It replaces the former Centre for Archaeology Reports Series, the Archaeological Investigation Report Series, the Architectural Investigation Report Series, and the Research Department Report Series.